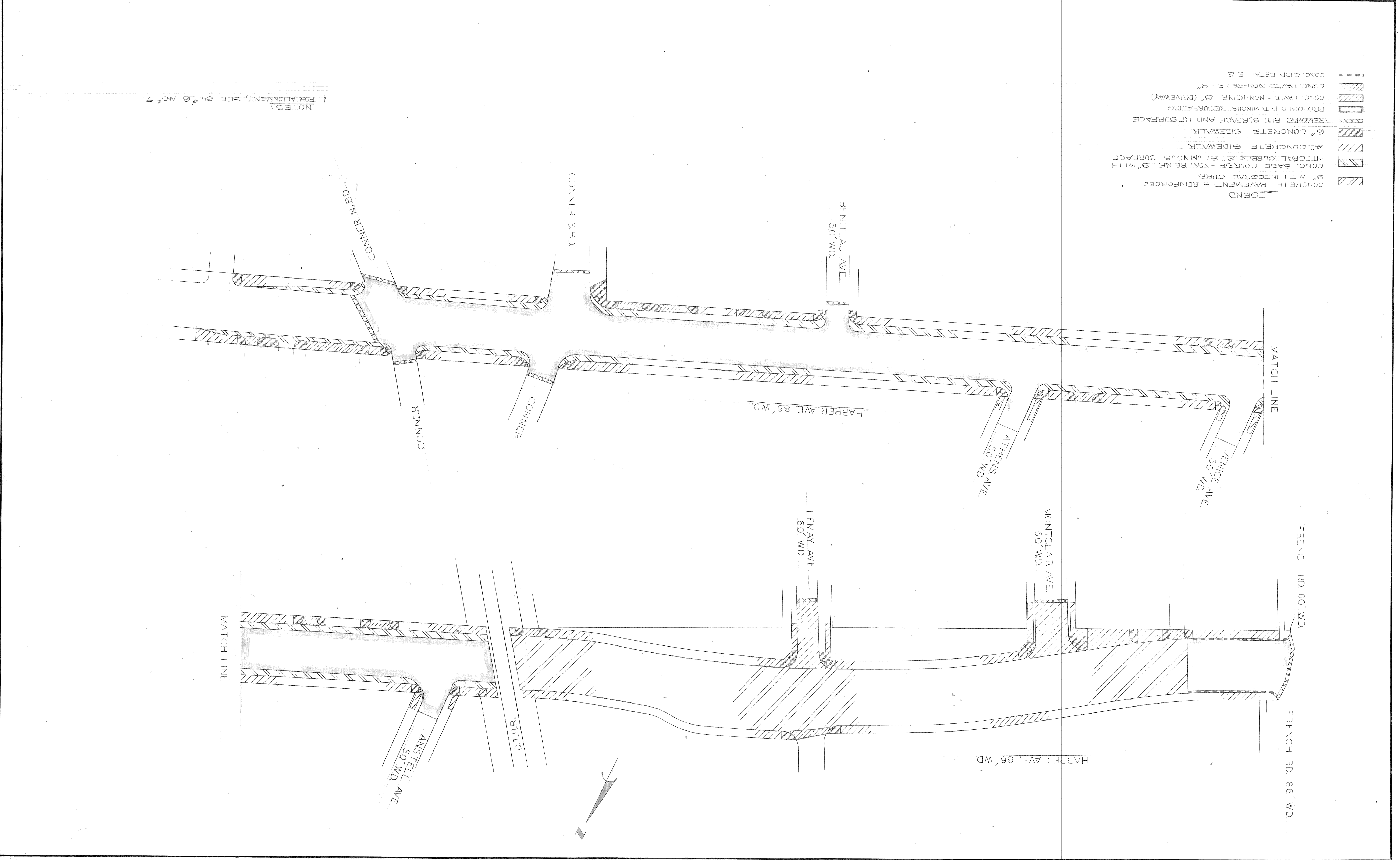


REVISIONS LOCATED BY COORDINATES ON SHEET		CHECKED BY <i>TALLEY</i>		DRAWN BY <i>R. E. N.</i>		DESIGNED BY		APPROVED: <i>M. M. O'Kallahan</i> ENGINEER OF STREETS	
COORD.	DESCRIPTION	DATE	BY	DATE	BY	DATE	BY	DATE	BY
CITY OF DETROIT CITY ENGINEERING DIVISION - E.P.M.D. BUREAUS OF STREETS AND HIGHWAYS FOR									
GENERAL PLAN					WIDENING OF HARPER AVENUE FROM FRENCH ROAD TO CONNER				
DATE 5-5-78		ASSIGNMENT NO. 76-22-62		CONTRACT NO. 11920A		SHEET 3 OF 50 SHEETS			



LEGEND

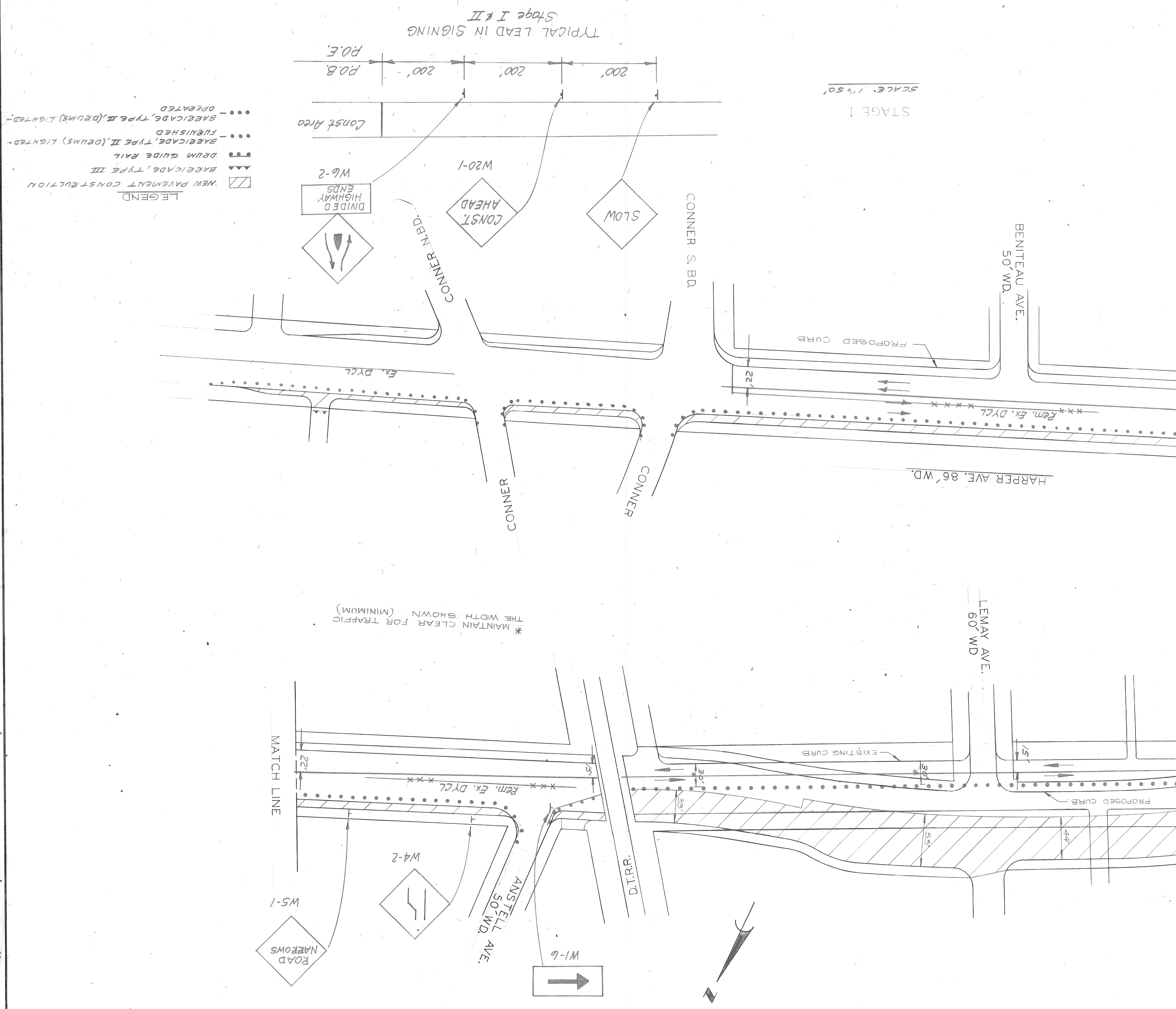
	CONCRETE PAVEMENT - REINFORCED
	9" WITH INTEGRAL CURB
	CONC. BASE COURSE - NON. REINF. - 9" WITH
	INTEGRAL CURB & 2" BITUMINOUS SURFACE
	4" CONCRETE SIDEWALK
	6" CONCRETE SIDEWALK
	REMOVING BIT. SURFACE AND RESURFACE
	PROPOSED BITUMINOUS RESURFACING
	CONC. PAV'T. - NON-REINF. - 8" (DRIVEWAY)
	CONC. PAV'T. - NON-REINF. - 9"
	CONC. CURB DETAIL E 2

NOTES:
1 FOR ALIGNMENT, SEE SH. # 9 AND # 7

11
10
9
8
7
6
5
4
3
2
1
 G
F
E
D
C
B
A

REVISIONS LOCATED BY COORDINATES ON SHEET COOR. DESCRIPTION DATE		CHECKED BY TRACED BY TALLEY	
DESIGNED BY DRAWN BY D. & U.		APPROVED ENGINEER OF STREETS Wm. J. K...	
CITY OF DETROIT CITY ENGINEERING DIVISION - E.P.M. BUREAUS OF STREETS AND HIGHWAYS FOR			
WIDENING OF HARPER AVENUE FROM FRENCH ROAD TO CONNER CONTRACT NO. 11420A ASSIGNMENT 76-22-62 DATE 5-5-78		CONSTRUCTION SEQUENCE	

- MISCELLANEOUS QUANTITIES HARPER AVENUE FROM FRENCH ROAD TO CONNER
- MOBILIZATION - LUMP SUM
 - BARRELIAGE, TYPE III - 9 EACH
 - DRUM GUIDE RAIL - 110 LIN. FT.
 - BARRELIAGE, TYPE II (CRMS), LIGHTED - FURNISHED - 153 EACH
 - BARRELIAGE, TYPE II (FRUMS), LIGHTED - OPERATED - 102 EACH
 - LIGHTED ARROW TYPE A FURNISHED - 2 EACH
 - LIGHTED ARROW TYPE A OPERATED - 2 EACH
 - MINOR TRAFFIC DEVICES - LUMP SUM



11
10
9
8
7
6
5
4
3
2
1

11
10
9
8
7
6
5
4
3
2
1

DATE 5-5-78
NO. 76-22-62
ASSIGNMENT
CONTRACT NO. 11420A
SHEET 4 OF 50 SHEETS

CONSTRUCTION SEQUENCE

WIDENING OF HARPER AVENUE FROM FRENCH ROAD TO CONNER
CITY ENGINEERING DIVISION - E.P.M.
BUREAUS OF STREETS AND HIGHWAYS
FOR

CITY OF DETROIT

DESIGNED BY
DRAWN BY
D. & U.

APPROVED
ENGINEER OF STREETS
Wm. J. K...

REVISIONS LOCATED BY COORDINATES ON SHEET
COOR. DESCRIPTION
DATE

CHECKED BY
TRACED BY
TALLEY

LEGEND

- NEW PAVEMENT CONSTRUCTION
- BARRELIAGE, TYPE III
- DRUM GUIDE RAIL
- BARRELIAGE, TYPE II (CRMS) LIGHTED
- BARRELIAGE, TYPE II (FRUMS) LIGHTED
- FURNISHED
- OPERATED

TYPICAL LEAD IN SIGNING Stage I & II

SCALE: 1" = 50'

STAGE I

MATCH LINE

MATCH LINE

* MAINTAIN CLEAR FOR TRAFFIC THE WIDTH SHOWN (MINIMUM)

Rem. Ex. DYCL

Temp. DYCL

EXISTING CURB

PROPOSED CURB

CONNER S. BD.

HARPER AVE. 86' WD.

LEMAY AVE. 60' WD.

MONTCLAIR AVE. 60' WD.

ATHENS AVE. 50' WD.

VENICE AVE. 50' WD.

FRENCH RD. 86' WD.

FRENCH RD. 60' WD.

ROAD NARROWS

W1-6

W4-2

W5-1

W6-2

W20-1

CONNER N.B.D.

CONST. AHEAD

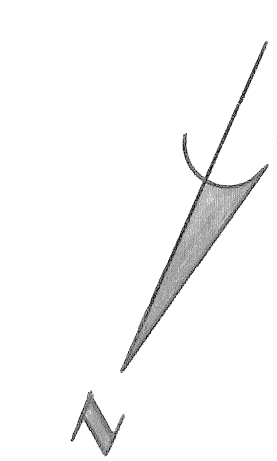
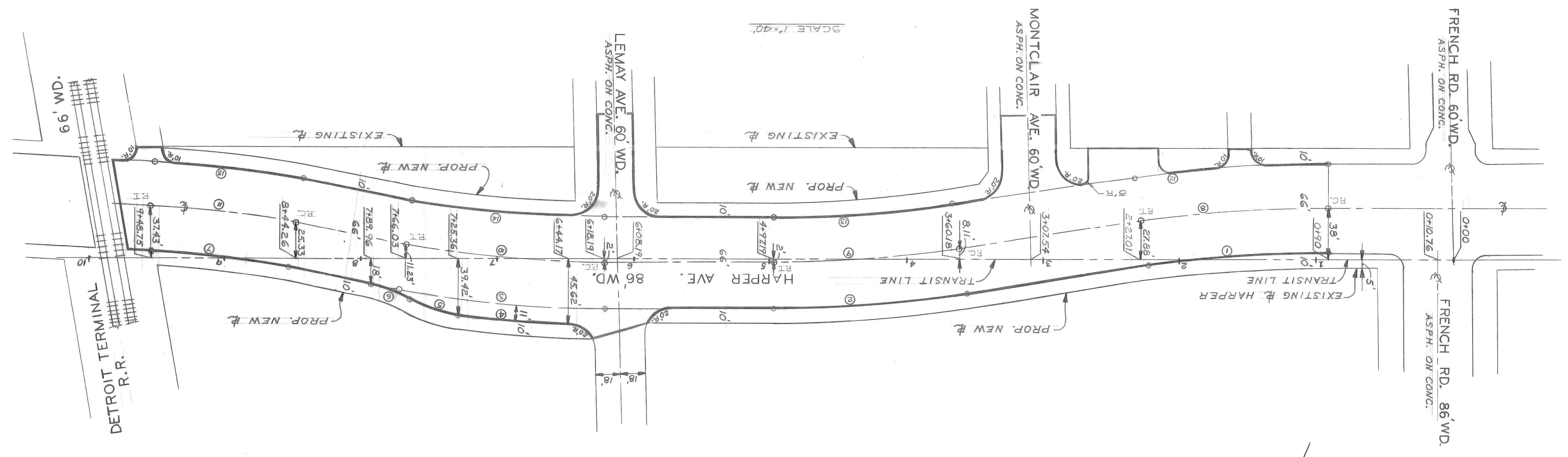
SLOW

DIVIDED HIGHWAY ENDS

DATE 5-5-78		ALIGNMENT SHEET		CITY OF DETROIT		APPROVED: <i>James J. Kavanagh</i>		ENGINEER OF STREETS		DRAWN BY: R Rosik		CHECKED BY: <i>Talley</i>		REVISIONS LOCATED BY COORDINATES ON SHEET	
ASSIGNMENT NO. 76-22-62		CONTRACT NO. 11920A		FOR BUREAU OF STREETS AND HIGHWAYS		CITY ENGINEERING DIVISION - E.P.M.D.		DESIGNED BY:		DRAWN BY:		CHECKED BY:		DESCRIPTION	
SHEET 6 OF 50 SHEETS		WIDENING OF HARPER AVENUE FROM FRENCH ROAD TO CONNER		CITY OF DETROIT		CITY ENGINEERING DIVISION - E.P.M.D.		DESIGNED BY:		DRAWN BY:		CHECKED BY:		COORDINATES	

NOTES:
 1. ALL ALLEY AND DRIVEWAY RETURN RADI SHALL BE 10' UNLESS OTHERWISE NOTED
 2. ALL STATIONING IS ALONG A TRANSIT LINE 5' SOUTH OF THE NORTH R. OF EXISTING HARPER AVE.

①	$\Delta = 8^{\circ}26'40.3"$	R = 900'	T = 66.44'	A = 132.65'
②	$\Delta = 8^{\circ}26'40.3"$	R = 966'	T = 71.32'	A = 142.37'
③	$\Delta = 10^{\circ}13'23.8"$	R = 866'	T = 72.47'	A = 154.52'
④	$\Delta = 5^{\circ}19'16.2"$	R = 877'	T = 40.75'	A = 81.45'
⑤	$\Delta = 21^{\circ}12'04"$	R = 100'	T = 18.72'	A = 37'
⑥	$\Delta = 17^{\circ}59'48.1"$	R = 100'	T = 15.84'	A = 31.41'
⑦	$\Delta = 7^{\circ}14'23.8"$	R = 800'	T = 50.61'	A = 109.43'
⑧	$\Delta = 8^{\circ}26'40.3"$	R = 933'	T = 68.88'	A = 137.51'
⑨	$\Delta = 10^{\circ}13'23.8"$	R = 833'	T = 74.51'	A = 148.63'
⑩	$\Delta = 7^{\circ}14'23.8"$	R = 833'	T = 52.70'	A = 105.26'
⑪	$\Delta = 10^{\circ}13'23.8"$	R = 800'	T = 71.56'	A = 142.74'
⑫	$\Delta = 7^{\circ}14'23.8"$	R = 866'	T = 54.79'	A = 109.43'



REVISIONS LOCATED BY COORDINATES ON SHEET	
NO.	DESCRIPTION

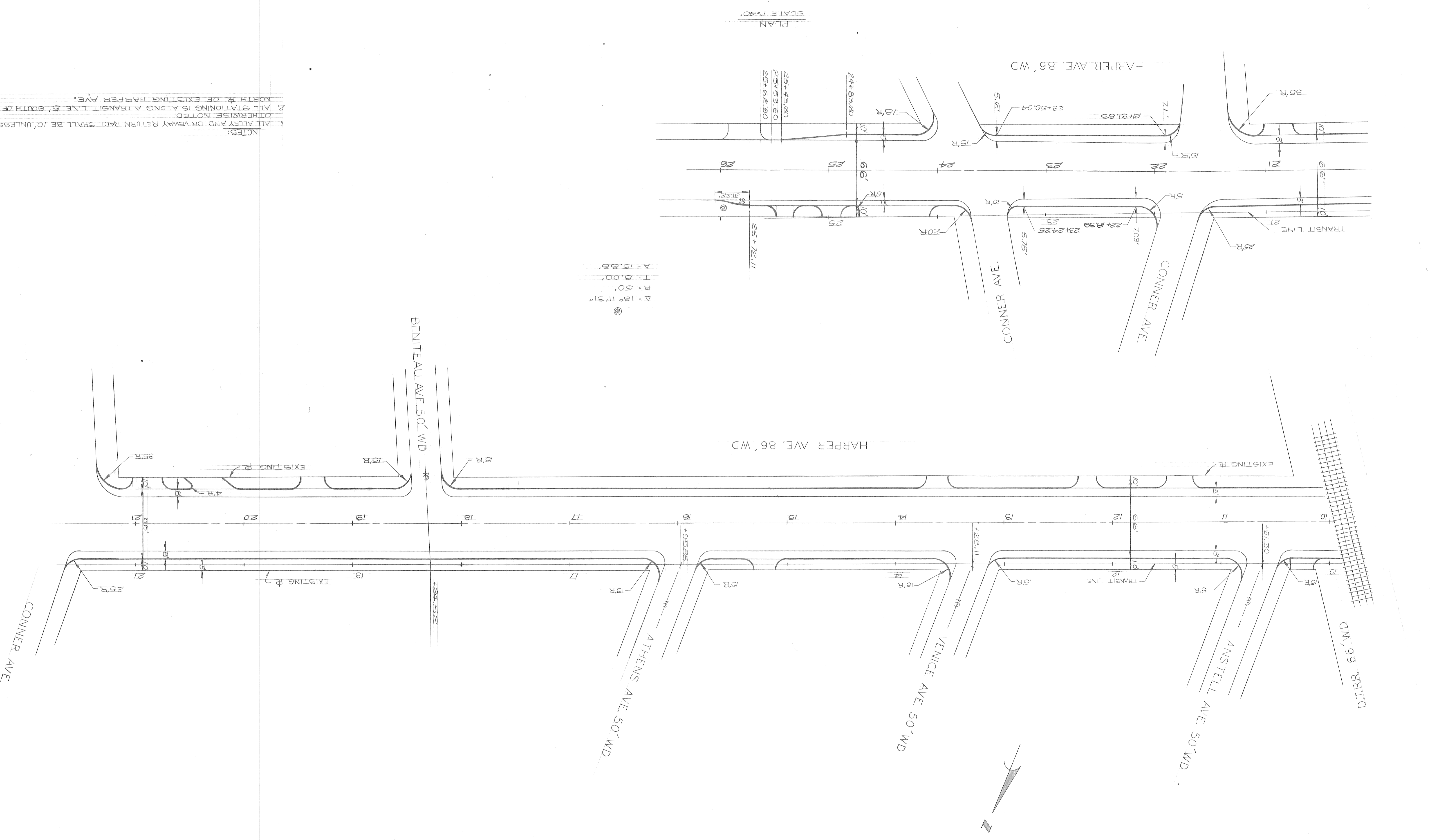
DESIGNED BY	
DRAWN BY	① G.M.
TRACED BY	
CHECKED BY	Talley

APPROVED: *Norm G. Kamm*
ENGINEER OF STREETS

CITY OF DETROIT
CITY ENGINEERING DIVISION - E.P.M.D.
BUREAUS OF STREETS AND HIGHWAYS
FOR

WIDENING OF HARPER AVENUE FROM
FRENCH ROAD TO CONNER
ALIGNMENT SHEET

SHEET 7 OF 50 SHEETS
CONTRACT NO. 11420A
ASSIGNMENT NO. 76-22-62
DATE 5-5-78

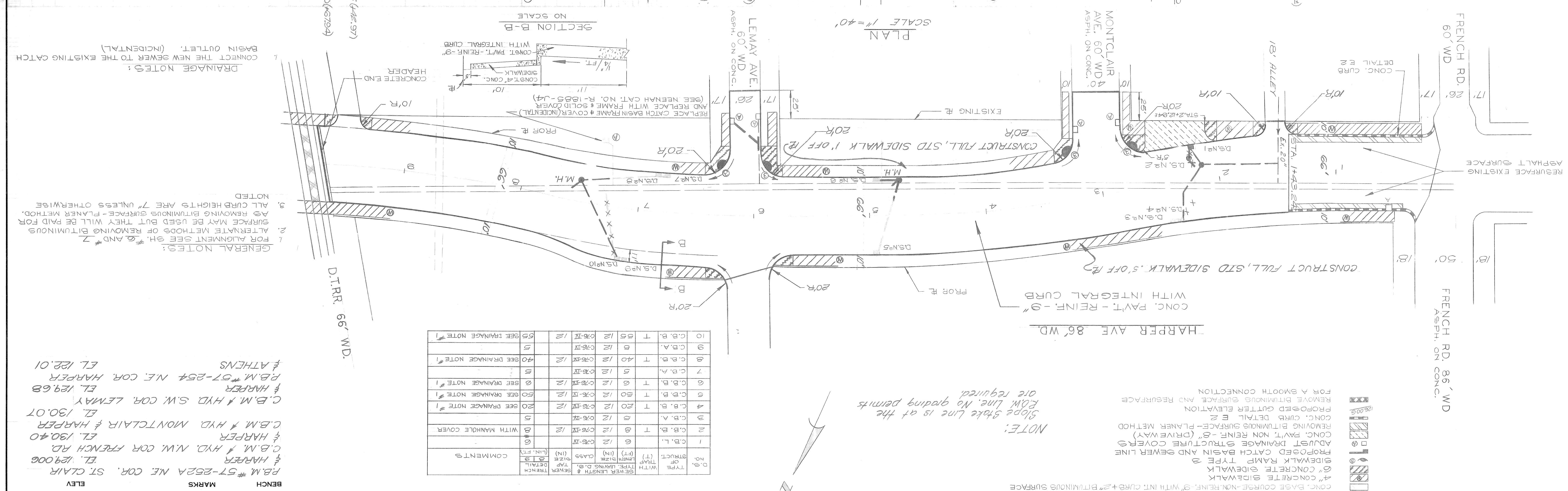
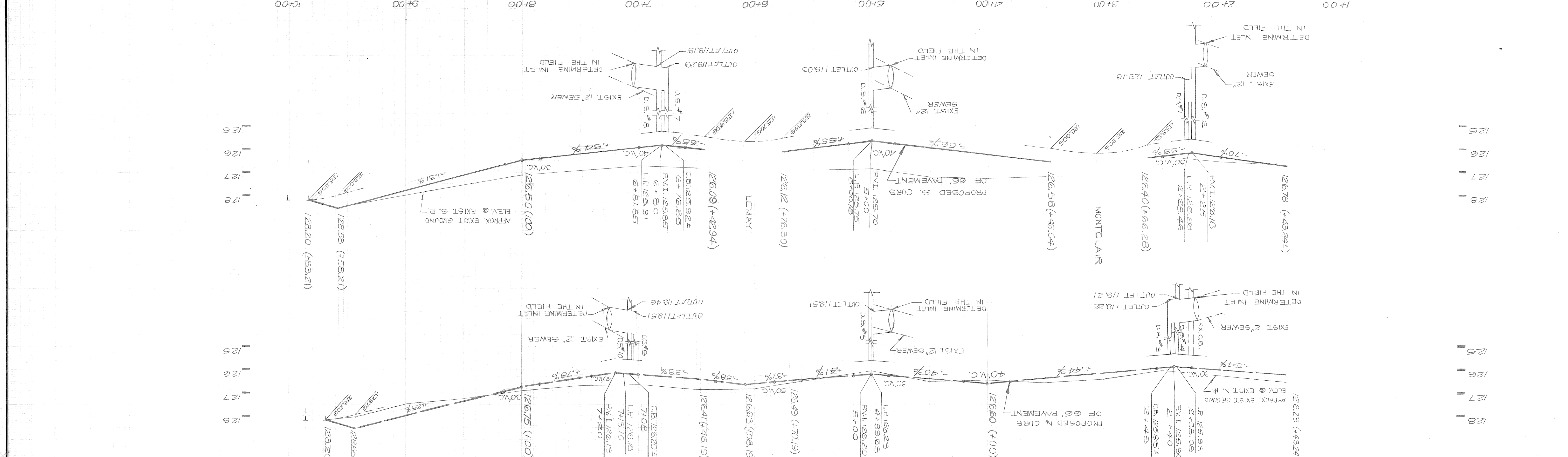


Δ = 18° 11' 31"
R = 50'
T = 8.00'
A = 15.00'

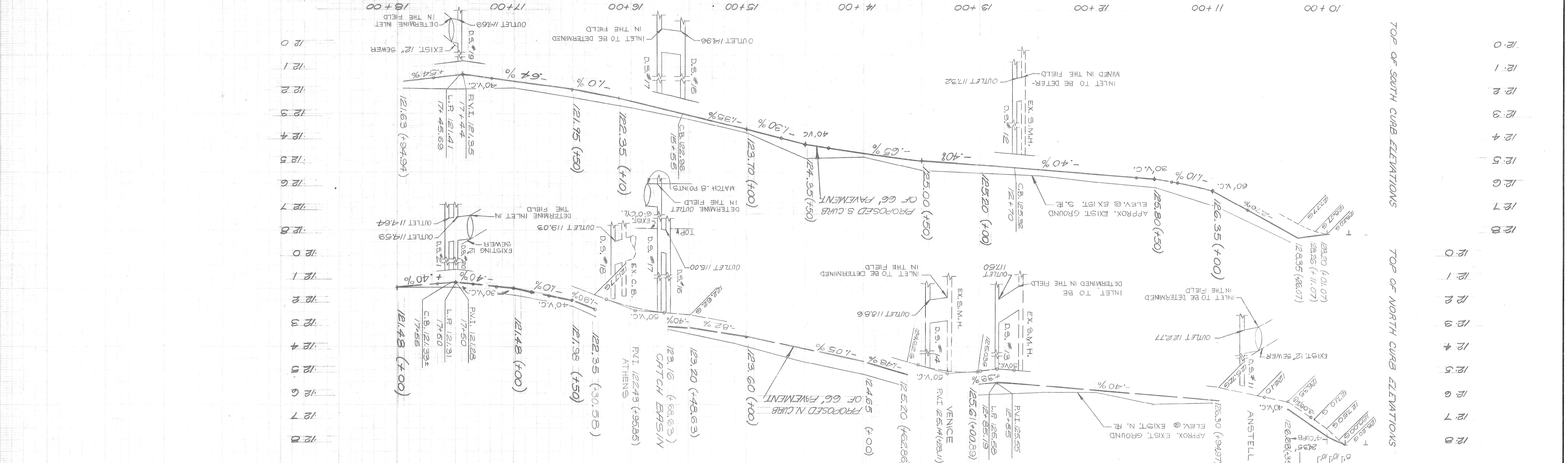
PLAN
SCALE 1"=40'

NOTES:
1. ALL ALLEY AND DRIVEWAY RETURN RADIUS SHALL BE 10' UNLESS OTHERWISE NOTED.
2. ALL STATIONING IS ALONG A TRANSIT LINE 5' SOUTH OF THE NORTH END OF EXISTING HARPER AVE.

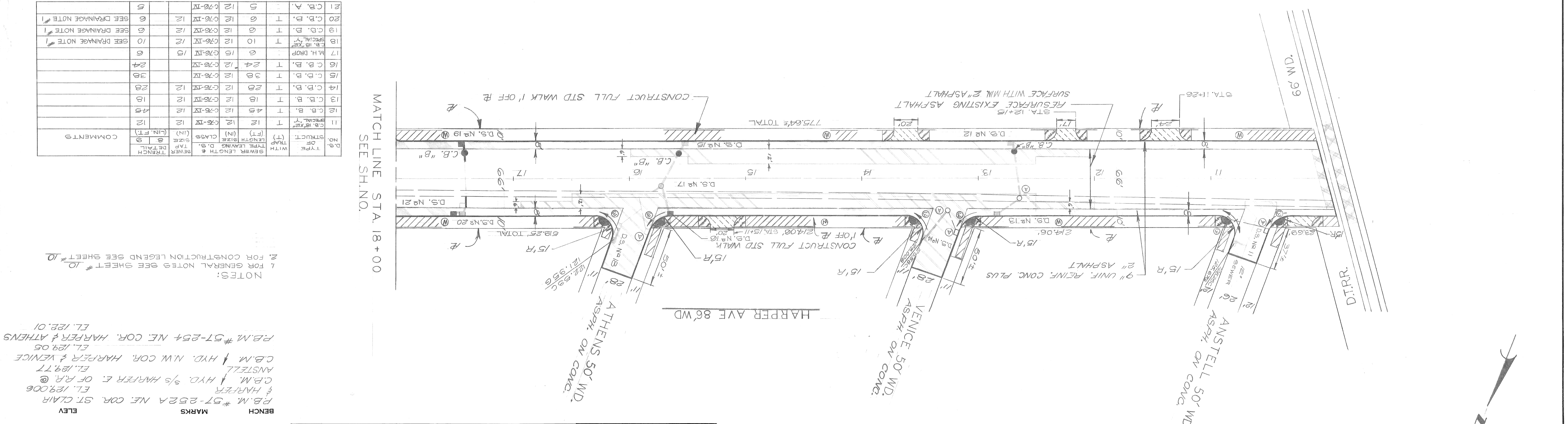
REVISIONS	DESCRIPTION	DATE	BY	CHECKED BY
1	AS BUILT	9-84	ZOK	
2				
3				
4				
5				
6				
7				
8				
9				
10				



NO.	TYPE OF TRAP	SEWER LENGTH	CLASS (IN)	COMMENTS
1	C.B. L.	6	12	
2	C.B. B.	12	12	
3	C.B. A.	12	12	
4	C.B. B.	20	12	
5	C.B. A.	12	12	
6	C.B. B.	12	12	
7	C.B. A.	12	12	
8	C.B. B.	40	12	SEE DRAINAGE NOTE #1
9	C.B. A.	12	12	
10	C.B. B.	12	12	SEE DRAINAGE NOTE #1



PLAN
 SCALE 1" = 40'
 TOP OF SOUTH CURB ELEVATIONS
 TOP OF NORTH CURB ELEVATIONS



NO.	TYPE	LENGTH (L.F.)	CLASS	MARKS	ELEV.	COMMENTS
21	C.B. A.	12	C76-IV	1		SEE DRAINAGE NOTE #1
20	C.B. B.	12	C76-IV	1		SEE DRAINAGE NOTE #1
19	C.B. D.	12	C76-IV	1		SEE DRAINAGE NOTE #1
18	M.H. DROP	12	C76-IV	1		SEE DRAINAGE NOTE #1
17	M.H. DROP	12	C76-IV	1		SEE DRAINAGE NOTE #1
16	C.B. B.	24	C76-IV	1		SEE DRAINAGE NOTE #1
15	C.B. B.	36	C76-IV	1		SEE DRAINAGE NOTE #1
14	C.B. B.	28	C76-IV	1		SEE DRAINAGE NOTE #1
13	C.B. B.	18	C76-IV	1		SEE DRAINAGE NOTE #1
12	C.B. B.	45	C76-IV	1		SEE DRAINAGE NOTE #1
11	C.B. B.	12	C76-IV	1		SEE DRAINAGE NOTE #1

MATCH LINE STA. 18+00
 SEE SHEET NO. 10

NOTES:
 1. FOR GENERAL NOTES SEE SHEET # 10
 2. FOR CONSTRUCTION LEGEND SEE SHEET # 10

BENCH MARKS:
 B.M. # 57-252A NE. COR. ST. CLAIR & HARPER
 E.L. 129.00
 C.P.M. HYD. 5/8 HARPER E. OF R.R. @ ANSTELL
 E.L. 129.77
 C.B.M. HYD. NW COR. HARPER & VENICE
 E.L. 129.05
 B.M. # 57-254 NE. COR. HARPER & ATHENS
 E.L. 128.01

BOOK NO. 57B(1)
 DATE 2-11-77
 SCALE: HORIZONTAL 1" = 40', VERTICAL 1" = 40'
 DRAWING NO. 1578
 PAVING COMPLETED

BOOK NO. 578(1) 1-37	DATE 2-11-77	REVISIONS
NO. 1	PG. 1	REVISE
NO. 2	PG. 1	REVISE
NO. 3	PG. 1	REVISE
NO. 4	PG. 1	REVISE
NO. 5	PG. 1	REVISE
NO. 6	PG. 1	REVISE
NO. 7	PG. 1	REVISE
NO. 8	PG. 1	REVISE
NO. 9	PG. 1	REVISE
NO. 10	PG. 1	REVISE
NO. 11	PG. 1	REVISE
NO. 12	PG. 1	REVISE
NO. 13	PG. 1	REVISE
NO. 14	PG. 1	REVISE
NO. 15	PG. 1	REVISE
NO. 16	PG. 1	REVISE
NO. 17	PG. 1	REVISE
NO. 18	PG. 1	REVISE
NO. 19	PG. 1	REVISE
NO. 20	PG. 1	REVISE
NO. 21	PG. 1	REVISE
NO. 22	PG. 1	REVISE
NO. 23	PG. 1	REVISE
NO. 24	PG. 1	REVISE
NO. 25	PG. 1	REVISE
NO. 26	PG. 1	REVISE
NO. 27	PG. 1	REVISE
NO. 28	PG. 1	REVISE
NO. 29	PG. 1	REVISE
NO. 30	PG. 1	REVISE
NO. 31	PG. 1	REVISE
NO. 32	PG. 1	REVISE
NO. 33	PG. 1	REVISE
NO. 34	PG. 1	REVISE
NO. 35	PG. 1	REVISE
NO. 36	PG. 1	REVISE
NO. 37	PG. 1	REVISE
NO. 38	PG. 1	REVISE
NO. 39	PG. 1	REVISE
NO. 40	PG. 1	REVISE
NO. 41	PG. 1	REVISE
NO. 42	PG. 1	REVISE
NO. 43	PG. 1	REVISE
NO. 44	PG. 1	REVISE
NO. 45	PG. 1	REVISE
NO. 46	PG. 1	REVISE
NO. 47	PG. 1	REVISE
NO. 48	PG. 1	REVISE
NO. 49	PG. 1	REVISE
NO. 50	PG. 1	REVISE

NOTE - FOR SYMBOLS (S) ETC. SEE STANDARD DETAIL DRAWING NO. C-177

CONTRACTOR MUST CHECK WITH UTILITIES FOR LOCATIONS OF EXISTING STRUCTURES WHETHER OR NOT INDICATED ON PLANS.

REMARKS: 1. FOR GENERAL NOTES SEE SHEET # 10 2. FOR CONSTRUCTION LEGEND SEE SHEET # 10 3. THE CONTRACTOR SHALL MAINTAIN A LONGITUDINAL SAWING SHALL BE BY A METHOD APPROVED BY THE ENGINEER AND WILL NOT BE PAID FOR SEPARATELY BUT WILL BE INCIDENTAL TO THE CONTRACT.

MARKS: BENCH 121.967 P.B.M. 57-254 N.E. COR. HARPER & ATHENS P.B.M. 57-254 N.E. COR. HARPER & ATHENS P.B.M. 57-254 N.E. COR. ST. CLAIR 129.006 P.B.M. 57-254 N.E. COR. ST. CLAIR 127.39 P.B.M. 57-254 N.E. COR. CONNER & HARPER 124.31 P.B.M. 57-254 N.E. COR. BENITEAU & HARPER 124.31 P.B.M. 57-254 N.E. COR. HARPER & HARPER 129.006

SECTION C-C NO SCALE

HARPER AVE. 86' WD

CONNER -W

CONNER -E

CONNER -W

CONNER -E

CONNER -W

CONNER -E

CONNER -W

CONNER -E

CONNER -W

CONNER -E

CONNER -W

CONNER -E

CONNER -W

CONNER -E

CONNER -W

CONNER -E

CONNER -W

CONNER -E

CONNER -W

CONNER -E

CONNER -W

CONNER -E

CONNER -W

CONNER -E

CONNER -W

CONNER -E

CONNER -W

CONNER -E

CONNER -W

CONNER -E

CONNER -W

CONNER -E

CONNER -W

CONNER -E

CONNER -W

CONNER -E

CONNER -W

CONNER -E

CONNER -W

CONNER -E

CONNER -W

CONNER -E

EXISTING BITUMINOUS SURFACE ON CONC. STRIPING AND 2" BIT SURFACE (SEE NOTE #3)

CONC. BASE COURSE - NON. REINF. 9" WITH INT. CURB & 2" BITUMINOUS SURFACE

DRIVEWAY STA. 20+12

DRIVEWAY STA. 20+47

DRIVEWAY STA. 20+65

DRIVEWAY STA. 20+94

DRIVEWAY STA. 19+40

DRIVEWAY STA. 19+15

DRIVEWAY STA. 18+10

DRIVEWAY STA. 17+10

DRIVEWAY STA. 16+10

DRIVEWAY STA. 15+10

DRIVEWAY STA. 14+10

DRIVEWAY STA. 13+10

DRIVEWAY STA. 12+10

DRIVEWAY STA. 11+10

DRIVEWAY STA. 10+10

DRIVEWAY STA. 9+10

DRIVEWAY STA. 8+10

DRIVEWAY STA. 7+10

DRIVEWAY STA. 6+10

DRIVEWAY STA. 5+10

DRIVEWAY STA. 4+10

DRIVEWAY STA. 3+10

DRIVEWAY STA. 2+10

DRIVEWAY STA. 1+10

DRIVEWAY STA. 0+10

DRIVEWAY STA. -1+10

DRIVEWAY STA. -2+10

DRIVEWAY STA. -3+10

DRIVEWAY STA. -4+10

DRIVEWAY STA. -5+10

DRIVEWAY STA. -6+10

DRIVEWAY STA. -7+10

DRIVEWAY STA. -8+10

DRIVEWAY STA. -9+10

DRIVEWAY STA. -10+10

DRIVEWAY STA. -11+10

DRIVEWAY STA. -12+10

DRIVEWAY STA. -13+10

DRIVEWAY STA. -14+10

DRIVEWAY STA. -15+10

DRIVEWAY STA. -16+10

DRIVEWAY STA. -17+10

DRIVEWAY STA. -18+10

DRIVEWAY STA. -19+10

DRIVEWAY STA. -20+10

DRIVEWAY STA. -21+10

REUSE SURFACE EXISTING ASPHALT

CONSTRUCT FULL STD. SIDEWALK 1' OFF E

CONSTRUCT FULL STD. SIDEWALK 1' OFF E

CONSTRUCT FULL STD. SIDEWALK 1' OFF E

CONSTRUCT FULL STD. SIDEWALK 1' OFF E

CONSTRUCT FULL STD. SIDEWALK 1' OFF E

CONSTRUCT FULL STD. SIDEWALK 1' OFF E

CONSTRUCT FULL STD. SIDEWALK 1' OFF E

CONSTRUCT FULL STD. SIDEWALK 1' OFF E

CONSTRUCT FULL STD. SIDEWALK 1' OFF E

CONSTRUCT FULL STD. SIDEWALK 1' OFF E

CONSTRUCT FULL STD. SIDEWALK 1' OFF E

CONSTRUCT FULL STD. SIDEWALK 1' OFF E

CONSTRUCT FULL STD. SIDEWALK 1' OFF E

CONSTRUCT FULL STD. SIDEWALK 1' OFF E

CONSTRUCT FULL STD. SIDEWALK 1' OFF E

CONSTRUCT FULL STD. SIDEWALK 1' OFF E

CONSTRUCT FULL STD. SIDEWALK 1' OFF E

CONSTRUCT FULL STD. SIDEWALK 1' OFF E

CONSTRUCT FULL STD. SIDEWALK 1' OFF E

CONSTRUCT FULL STD. SIDEWALK 1' OFF E

CONSTRUCT FULL STD. SIDEWALK 1' OFF E

CONSTRUCT FULL STD. SIDEWALK 1' OFF E

CONSTRUCT FULL STD. SIDEWALK 1' OFF E

CONSTRUCT FULL STD. SIDEWALK 1' OFF E

CONSTRUCT FULL STD. SIDEWALK 1' OFF E

CONSTRUCT FULL STD. SIDEWALK 1' OFF E

CONSTRUCT FULL STD. SIDEWALK 1' OFF E

CONSTRUCT FULL STD. SIDEWALK 1' OFF E

CONSTRUCT FULL STD. SIDEWALK 1' OFF E

CONSTRUCT FULL STD. SIDEWALK 1' OFF E

CONSTRUCT FULL STD. SIDEWALK 1' OFF E

CONSTRUCT FULL STD. SIDEWALK 1' OFF E

CONSTRUCT FULL STD. SIDEWALK 1' OFF E

CONSTRUCT FULL STD. SIDEWALK 1' OFF E

CONSTRUCT FULL STD. SIDEWALK 1' OFF E

CONSTRUCT FULL STD. SIDEWALK 1' OFF E

CONSTRUCT FULL STD. SIDEWALK 1' OFF E

CONSTRUCT FULL STD. SIDEWALK 1' OFF E

CONSTRUCT FULL STD. SIDEWALK 1' OFF E

CONSTRUCT FULL STD. SIDEWALK 1' OFF E

CONSTRUCT FULL STD. SIDEWALK 1' OFF E

CONSTRUCT FULL STD. SIDEWALK 1' OFF E

CONSTRUCT FULL STD. SIDEWALK 1' OFF E

CONSTRUCT FULL STD. SIDEWALK 1' OFF E

CONSTRUCT FULL STD. SIDEWALK 1' OFF E

CONSTRUCT FULL STD. SIDEWALK 1' OFF E

CONSTRUCT FULL STD. SIDEWALK 1' OFF E

CONSTRUCT FULL STD. SIDEWALK 1' OFF E

REUSE SURFACE EXISTING ASPHALT

CONSTRUCT FULL STD. SIDEWALK 1' OFF E

CONSTRUCT FULL STD. SIDEWALK 1' OFF E

CONSTRUCT FULL STD. SIDEWALK 1' OFF E

CONSTRUCT FULL STD. SIDEWALK 1' OFF E

CONSTRUCT FULL STD. SIDEWALK 1' OFF E

CONSTRUCT FULL STD. SIDEWALK 1' OFF E

CONSTRUCT FULL STD. SIDEWALK 1' OFF E

CONSTRUCT FULL STD. SIDEWALK 1' OFF E

CONSTRUCT FULL STD. SIDEWALK 1' OFF E

CONSTRUCT FULL STD. SIDEWALK 1' OFF E

CONSTRUCT FULL STD. SIDEWALK 1' OFF E

CONSTRUCT FULL STD. SIDEWALK 1' OFF E

CONSTRUCT FULL STD. SIDEWALK 1' OFF E

CONSTRUCT FULL STD. SIDEWALK 1' OFF E

CONSTRUCT FULL STD. SIDEWALK 1' OFF E

CONSTRUCT FULL STD. SIDEWALK 1' OFF E

CONSTRUCT FULL STD. SIDEWALK 1' OFF E

CONSTRUCT FULL STD. SIDEWALK 1' OFF E

CONSTRUCT FULL STD. SIDEWALK 1' OFF E

CONSTRUCT FULL STD. SIDEWALK 1' OFF E

CONSTRUCT FULL STD. SIDEWALK 1' OFF E

CONSTRUCT FULL STD. SIDEWALK 1' OFF E

CONSTRUCT FULL STD. SIDEWALK 1' OFF E

CONSTRUCT FULL STD. SIDEWALK 1' OFF E

CONSTRUCT FULL STD. SIDEWALK 1' OFF E

CONSTRUCT FULL STD. SIDEWALK 1' OFF E

CONSTRUCT FULL STD. SIDEWALK 1' OFF E

CONSTRUCT FULL STD. SIDEWALK 1' OFF E

CONSTRUCT FULL STD. SIDEWALK 1' OFF E

CONSTRUCT FULL STD. SIDEWALK 1' OFF E

CONSTRUCT FULL STD. SIDEWALK 1' OFF E

CONSTRUCT FULL STD. SIDEWALK 1' OFF E

CONSTRUCT FULL STD. SIDEWALK 1' OFF E

CONSTRUCT FULL STD. SIDEWALK 1' OFF E

CONSTRUCT FULL STD. SIDEWALK 1' OFF E

CONSTRUCT FULL STD. SIDEWALK 1' OFF E

CONSTRUCT FULL STD. SIDEWALK 1' OFF E

CONSTRUCT FULL STD. SIDEWALK 1' OFF E

CONSTRUCT FULL STD. SIDEWALK 1' OFF E

CONSTRUCT FULL STD. SIDEWALK 1' OFF E

CONSTRUCT FULL STD. SIDEWALK 1' OFF E

CONSTRUCT FULL STD. SIDEWALK 1' OFF E

CONSTRUCT FULL STD. SIDEWALK 1' OFF E

CONSTRUCT FULL STD. SIDEWALK 1' OFF E

CONSTRUCT FULL STD. SIDEWALK 1' OFF E

CONSTRUCT FULL STD. SIDEWALK 1' OFF E

CONSTRUCT FULL STD. SIDEWALK 1' OFF E

CONSTRUCT FULL STD. SIDEWALK 1' OFF E

REUSE SURFACE EXISTING ASPHALT

CONSTRUCT FULL STD. SIDEWALK 1' OFF E

CONSTRUCT FULL STD. SIDEWALK 1' OFF E

CONSTRUCT FULL STD. SIDEWALK 1' OFF E

CONSTRUCT FULL STD. SIDEWALK 1' OFF E

CONSTRUCT FULL STD. SIDEWALK 1' OFF E

CONSTRUCT FULL STD. SIDEWALK 1' OFF E

CONSTRUCT FULL STD. SIDEWALK 1' OFF E

CONSTRUCT FULL STD. SIDEWALK 1' OFF E

CONSTRUCT FULL STD. SIDEWALK 1' OFF E

CONSTRUCT FULL STD. SIDEWALK 1' OFF E

CONSTRUCT FULL STD. SIDEWALK 1' OFF E

CONSTRUCT FULL STD. SIDEWALK 1' OFF E

CONSTRUCT FULL STD. SIDEWALK 1' OFF E

CONSTRUCT FULL STD. SIDEWALK 1' OFF E

CONSTRUCT FULL STD. SIDEWALK 1' OFF E

CONSTRUCT FULL STD. SIDEWALK 1' OFF E

CONSTRUCT FULL STD. SIDEWALK 1' OFF E

CONSTRUCT FULL STD. SIDEWALK 1' OFF E

CONSTRUCT FULL STD. SIDEWALK 1' OFF E

CONSTRUCT FULL STD. SIDEWALK 1' OFF E

CONSTRUCT FULL STD. SIDEWALK 1' OFF E

CONSTRUCT FULL STD. SIDEWALK 1' OFF E

CONSTRUCT FULL STD. SIDEWALK 1' OFF E

REVISIONS LOCATED BY COORDINATES ON SHEET		CHECKED BY TALLEY	
COORD.	DESCRIPTION	TRACED BY	
DRAWN BY R Rosik		DESIGNED BY	
APPROVED: [Signature]			
CITY OF DETROIT ENGINEERING DIVISION - E.P.M.D.		FOR BUREAUS OF STREETS AND HIGHWAYS	
WIDENING OF HARPER AVENUE FROM FRENCH ROAD TO CONNER		UTILITY PLAN	
SHEET 13 OF 50 SHEETS	CONTRACT NO. 11420A	ASSIGNMENT NO. 70-22-62	DATE 5-5-78

