

CITY OF DETROIT  
CITY ENGINEERING DIVISION - E.P.M.D.

IN CO-OPERATION WITH  
MICHIGAN DEPARTMENT OF STATE HIGHWAYS AND TRANSPORTATION  
AND  
FEDERAL HIGHWAY ADMINISTRATION  
PLAN AND PROFILE OF PROPOSED

FEDERAL AID URBAN PROJECT NO. MICHIGAN M 2000 (041)  
CONTROL SECTION 82400 JOB NO. 11415A & 11416A (042)

STANDARD PLANS

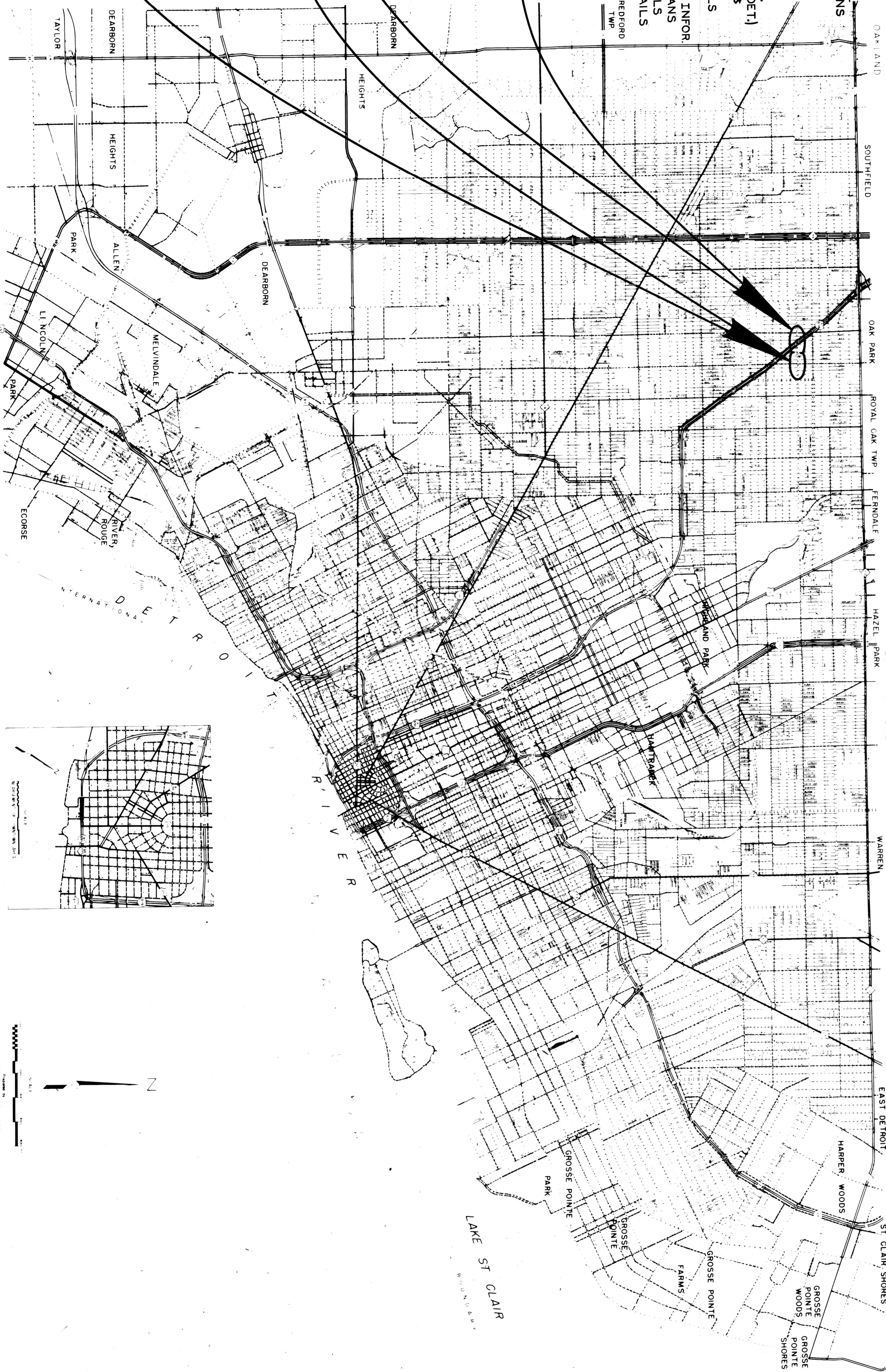
II-28F	II-43B
II-29B	II-44C
II-39D	IV-84B
II-40C	VI-124B
II-41B	VI-125D
II-42A	E-4-A-10E

INDEX TO SHEETS

- TITLE SHEET
- SEVEN MILE - JAMES COUZENS
- TYPICAL CROSS-SECTIONS
- ALIGNMENT & PLAN
- PROFILES & REMOVALS
- UTILITIES & REMOVALS
- SEVEN MILE - SCHAEFER HWY.
- TYPICAL CROSS-SECTIONS
- ALIGNMENT
- PLANS
- PROFILES
- UTILITIES & REMOVALS
- DETAILED GRADES
- SPECIAL STANDARDS & SPECIAL DETAILS (CITY OF DET.)
- SPECIAL STANDARDS & SPECIAL DETAILS (M.C.R.C.)
- FIRE HYDRANT DETAILS
- QUANTITY SHEETS
- PLD LEGEND & GEN. INFOR
- PLD GENERAL PLANS
- PLD TRAFFIC SIGNALS
- PLD STANDARD DETAILS
- PLD QUANTITIES

SEVEN MILE RD.  
AND  
JAMES COUZENS  
INTERSECTIONAL  
IMPROVEMENT  
ITEM No 253

SEVEN MILE RD.  
AND  
SCHAEFER HWY  
INTERSECTIONAL  
IMPROVEMENT  
(11416A)  
ITEM No 254



B.P.R.	STATE	PROJECT NO.	FISCAL YEAR	SHEET NO.	TOTAL SHEETS
4	MICH				
STREET	CITY	COUNTY	TWP	SHEET NO.	TOTAL SHEETS
DETROIT	WAYNE			1	

THE APPROVEMENTS COVERED BY THESE PLANS SHALL BE IN ACCORDANCE WITH THE MICHIGAN DEPARTMENT OF STATE HIGHWAYS CURRENT STANDARD SPECIFICATIONS AND SUPPLEMENTAL SPECIFICATIONS.

ITEMS No 253 & 254

BOARD OF WAYNE COUNTY ROAD COMMISSIONERS  
APPROVAL

BY *M. J. Jankovic* 4/3/78  
CHIEF ENGINEER - DESIGN DIVISION  
DATE

BY *W. D. Dwyer* 4-4-78  
COUNTY HIGHWAY ENGINEER  
DATE

CONTRACT FOR INTERSECTIONAL IMPROVEMENT

LOCAL AUTHORITY APPROVAL  
CITY OF DETROIT  
ENVIRONMENTAL PROTECTION & MAINTENANCE DEPARTMENT

APPROVED BY *H. Cant* 2-20-78  
ASSISTANT - CITY ENGINEER  
DATE

APPROVED BY *M. Jankovic* 2-10-78  
CITY ENGINEER  
DATE

RECOMMENDED FOR APPROVAL

BY *M. A. Kemp* 7/12/78  
F.A.U. ENGINEER  
DATE

BY *John D. Davis* 7/12/78  
CHECKED BY  
DATE

DEPARTMENT OF STATE HIGHWAYS APPROVAL  
APPROVED FOR COMMISSION

BY *James G. Giff* 7/12/78  
DEPUTY DIRECTOR - HIGHWAYS  
DATE

PREPARED UNDER SUPERVISION OF

REGISTERED PROFESSIONAL ENGINEER  
REGISTRATION NO. 9261

CITY OF DETROIT  
ORGANIZATION

DETROIT MICHIGAN  
ADDRESS

(SEAL)



U.S. DEPARTMENT OF TRANSPORTATION  
FEDERAL HIGHWAY ADMINISTRATION

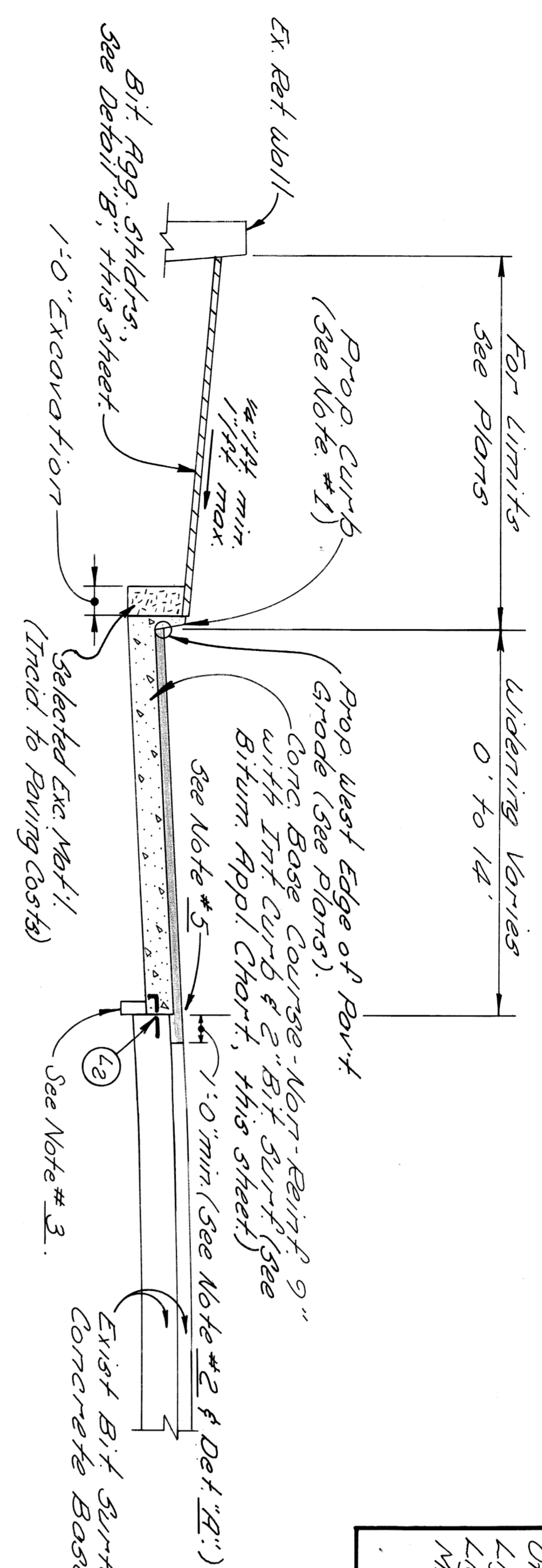
APPROVED

DISTRICT ENGINEER

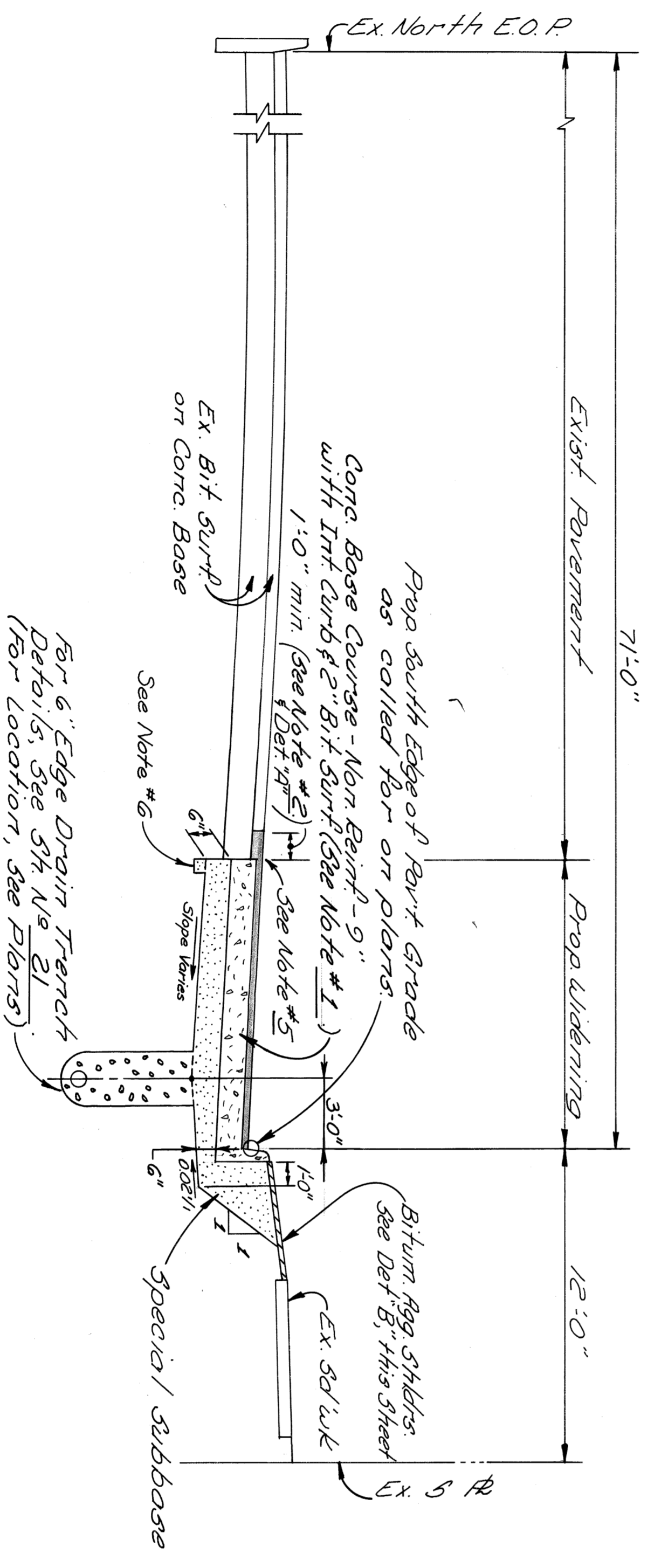
FILE NO.	PROJECT	DATE	SHEET
82400			

MISCELLANEOUS	QUANTITIES	FOR	UNITS	C.O.D. QUANT.	MISCELLANEOUS QUANT.
Drum Guide Rail	---	SEVEN MILE - JAMES COUZENS	Lin. Ft.	25	75
Barricade Type II (Drums), Lighted-Furnished	---		Ea.	36	66
Barricade Type II, (Drums), Lighted-Operated	---		Ea.	24	44
Mobilization	---		Lamp Unit	0.1	0.1
On The Job Training	---		Ea.	0.1	0.1
Lighted Arrow Type A - Furnished	---		Ea.	1	1
Lighted Arrow Type A - Operated	---		Ea.	1	1
Minor Traffic Devices	---		Lamp Unit	0.1	0.1

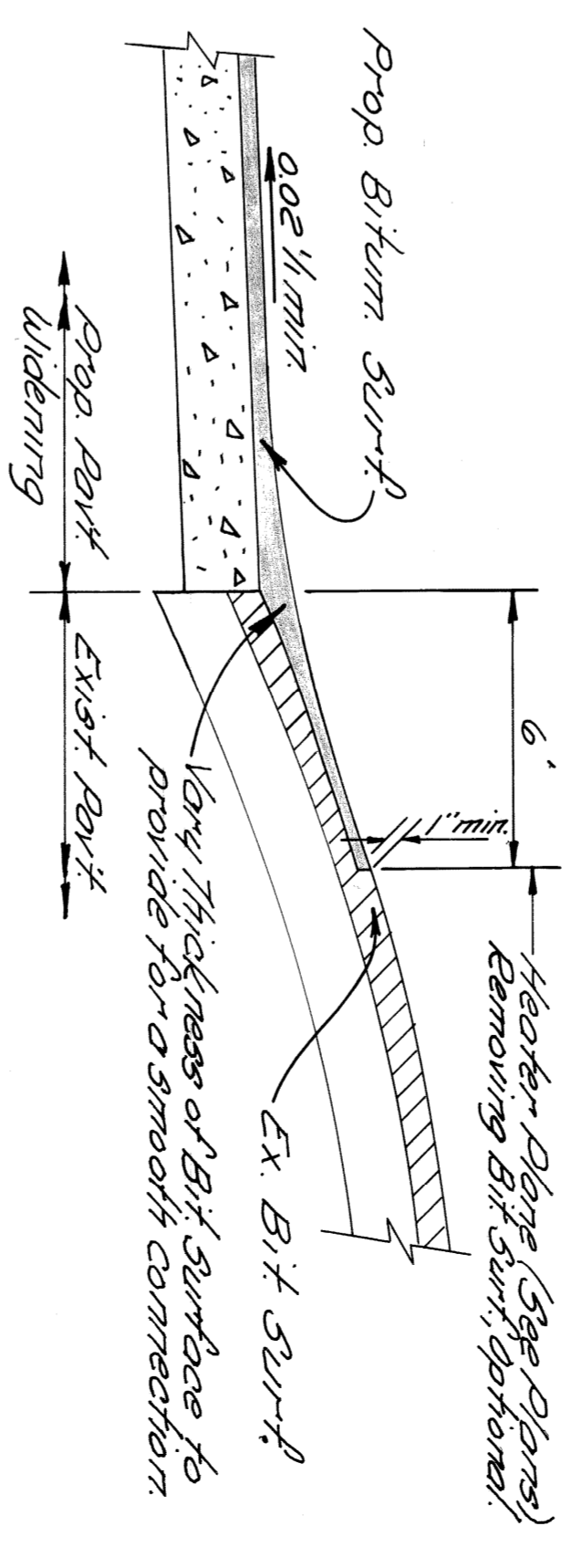
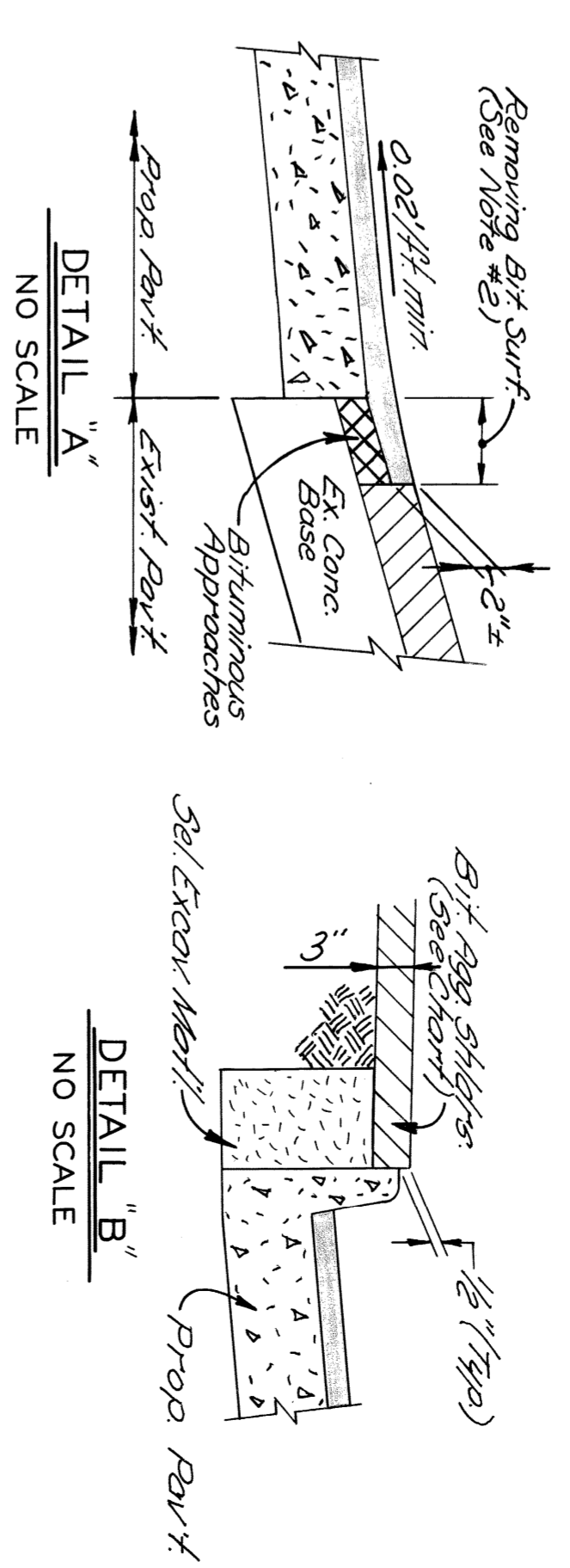
BITUMINOUS	APPLICATION	CHART
ITEM	RATE OF APPLICATION	ESTIMATED THICKNESS ASPHALT PENETRATION
Bit Conc. Leveling Course (2.5A)	110 #/Sq.	1 1/2" 85-100
Bit Conc. Wearing Course 3/4" Type IV	110 #/Sq.	1 1/2" 85-100
Bit Aggregate Shoulder	340 #/3' Sq.	3 1/2" 200-250
Bit Bond Coat 0-010 gal/Sq. for rigid bases and 0-005 gal/Sq. Tack Coat between layers.	3 ITA	



TYPICAL CROSS-SECTION  
EAST JAMES-COUZENS-ARDMORE TO SEVEN MILE  
NO SCALE



TYPICAL CROSS-SECTION  
SEVEN MILE ROAD-STRAITHMOOR TO W. JAMES COUZENS  
NO SCALE



C.O.D. QUANT.	MISCELLANEOUS QUANT.	DESCRIPTION	QUANT.
60	140	Subgrade Undercutting, Type II	200 C.Y.
72	182	4" Concrete Sidewalk	252 Sq. Ft.
8	22	Removing Existing Storm Drainage Structures	288 Sq. Yd.
2	5	Reconstructing Structures	4 C.Y.
0			5 Lin. Ft.

- JOINT LEGEND**
- (A) Longitudinal Bulkhead Construction Joint, according to M.D.S. 411 Std. Draw. II-411 B

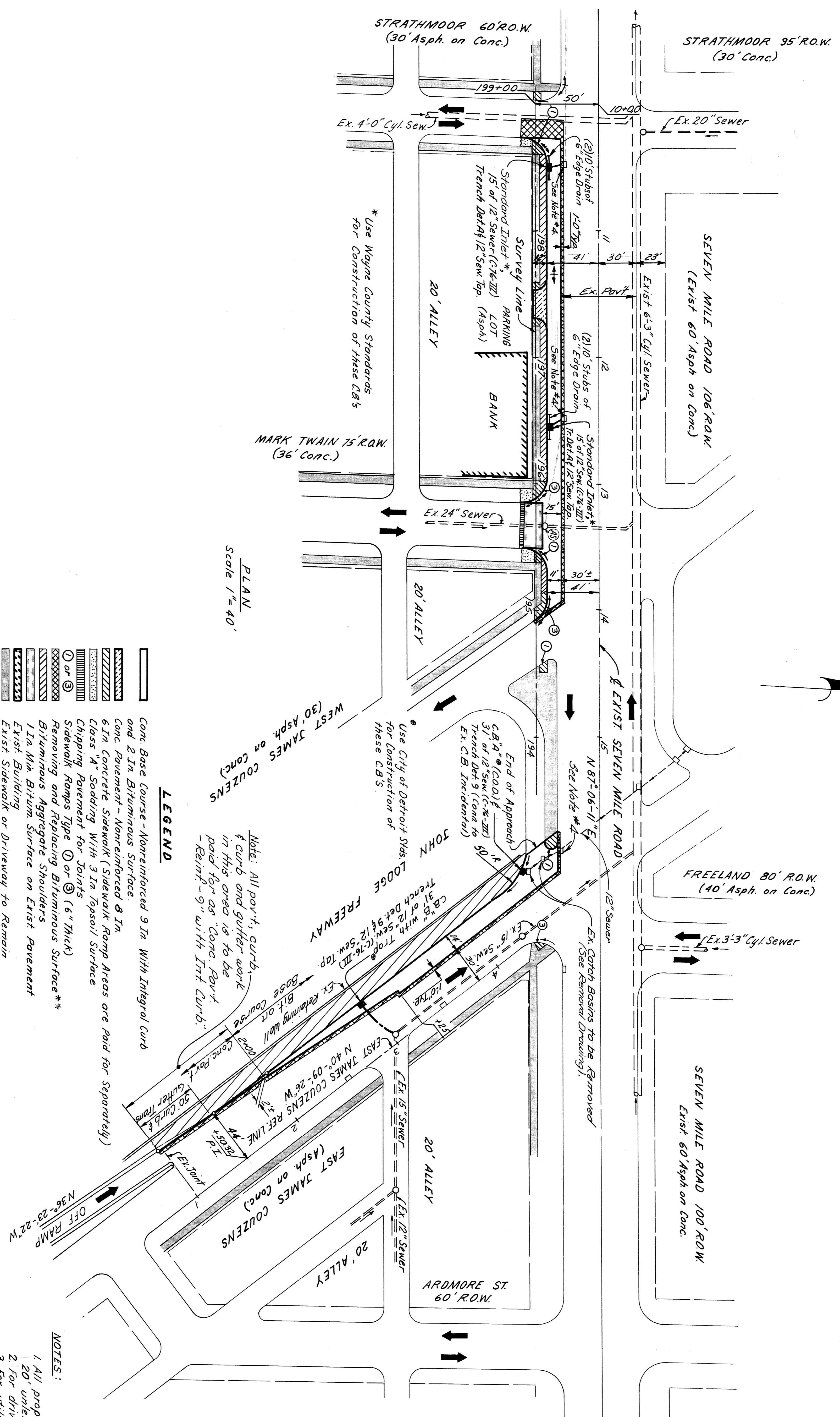
- GENERAL NOTES**
- The proposed "Curb" shall be "Integrated Straight Curb" with "Concrete Curb-Stright" as an option. For Details, See 5th # 19. If "Concrete Curb-Stright" is used, the new curb shall be constructed using the new method of construction, including widening, and the curb shall be paved for concrete base course.
  - The Contractor shall saw cut (2" min. depth) a longitudinal line along the limit of the one foot (min.) striping. This work is incidental to "Removing Bituminous Surface".
  - Fill Ex Curb void with Gran Mat'l. (I) Inad. to Pav't Const'l.
  - Backfill 1" rest under Prop. Sidewalk & Pav't shall be Granular Mat'l. (I) Inad. to Prop. Pav't and Sidewalk Const'l.
  - Sawed Longitudinal Plane of Weakness Joint, For Details, See 5th # 19.
  - Fill Existing Curb void with Special Subbase.

DESIGNER BY DOMI/THK	DESIGNED BY SUCCECH	APPROVED BY <i>[Signature]</i> ENGINEER OF STREETS HIGHWAY ENGINEER	CITY OF DETROIT CITY ENGINEERING DIVISION - E.P.M.D. BUREAUS OF STREETS AND HIGHWAYS	SEVEN MILE ROAD-JAMES COUZENS INTERSECTION IMPROVEMENT	SHEET 2 OF 51 SHEETS CONTRACT NO. 11415A ASSIGNMENT NO. 76-22-40 DATE 1-7-78
TRACED BY DOMI/THK	CHECKED BY DOMI/THK			TYPICAL CROSS-SECTIONS-SEVEN MILE & JAMES COUZENS EAST	
REVISIONS LOCATED BY COORDINATES ON SHEET					

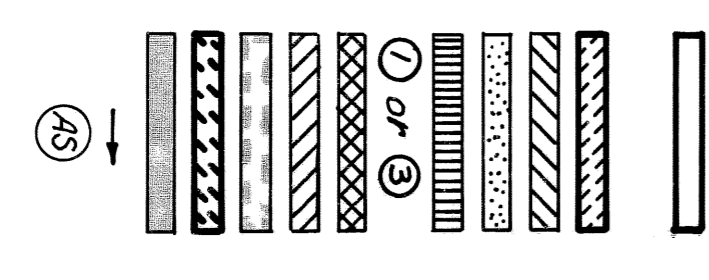
**BENCH MARKS**

P.B.M. # 87-236 Elev. 181.982 15' S. of N. & Seven Mile & 3' W. of W. & Schoerfer Highway  
 C.B.M. Elev. 185.84 Arrow on Hydrant S.E. Corner Seven Mile and James Couzens

C.B.M. Elev. 185.44 Arrow on Hydrant SW Corner Seven Mile and Strathmoor  
 C.B.M. Elev. 185.85 Arrow on Hydrant SW Corner Seven Mile & Mark Twain



**PLAN**  
 Scale 1" = 40'



**LEGEND**

Conc. Base Course - Nonreinforced 9 In. With Integral Curb and 2 In. Bituminous Surface.  
 Conc. Pavement - Nonreinforced 8 In. 6 In. Concrete Sidewalk (Sidewalk Ramp Areas are Paid for Separately)  
 Class "A" Sodding With 3 In. Topsoil Surface  
 Chipping Pavement for Joints  
 Sidewalk Ramps Type ① or ③ (6" Thick)  
 Removing and Replacing Bituminous Surface\*\*  
 Bituminous Aggregate Shoulders  
 1 In. Min. Bitum. Surface on Exist. Pavement  
 Exist. Building  
 Exist. Sidewalk or Driveway to Remain  
 Drainage Direction Arrow  
 Adjusting Structures

\*\* For one foot stripping adjacent to prep. pav't, See Detail 'A', Sh. # 2.

**NOTE:** All pav't, curb, & curb and gutter work in this area is to be paid for as "Conc. Pav't - Reinf." - 9" with Int. Curb.

Use City of Detroit Stds. LODGE for Construction of these C.B.S.

**EAST JAMES COUZENS CURVE DATA**

$\Delta = 3^\circ - 46' - 04''$   
 $D = 3^\circ - 34' - 52''$   
 $R = 1600'$   
 $T = 52.63'$   
 $L = 105.22'$   
 $E = 0.87'$   
 $P.C. = 0+97.80$   
 $P.T. = 1+50.32$   
 $P.T. = 2+02.95$

{ E James Couz. Ref. Line Stationing

**NOTES:**

1. All proposed street return radii shall be 20' unless otherwise noted.
2. For driveway details, see sheet No. 16.
3. For utility legend & symbols, see sheet No. 16.
4. Remove C.B. Frame & Cover, replace with W.C.R.C. manhole frame & cover, and adjust to proposed grade. (Removal is Includ. to New Cover).

DESIGNED BY <i>B.C.</i>	APPROVED <i>[Signature]</i> HIGHWAY ENGINEER	CITY OF DETROIT CITY ENGINEERING DIVISION E.P.M.D.	SHEET 3 OF 51 SHEETS CONTRACT 11415A DRAWG. NO. 1-7-78
DRAWN BY <i>Suecyl/Comly</i>	CHECKED BY <i>W.B.</i>		
DESCRIPTION ALIGNMENT AND PLAN	REVISIONS LOCATED BY COORDINATES ON SHEET		

