

# STATE OF MICHIGAN DEPARTMENT OF STATE HIGHWAYS AND TRANSPORTATION

## PLANS OF PROPOSED

### MICHIGAN PROJECT

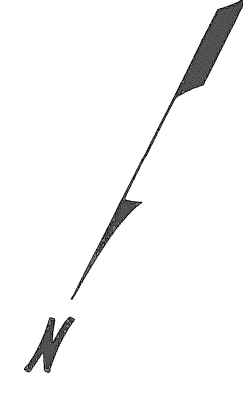
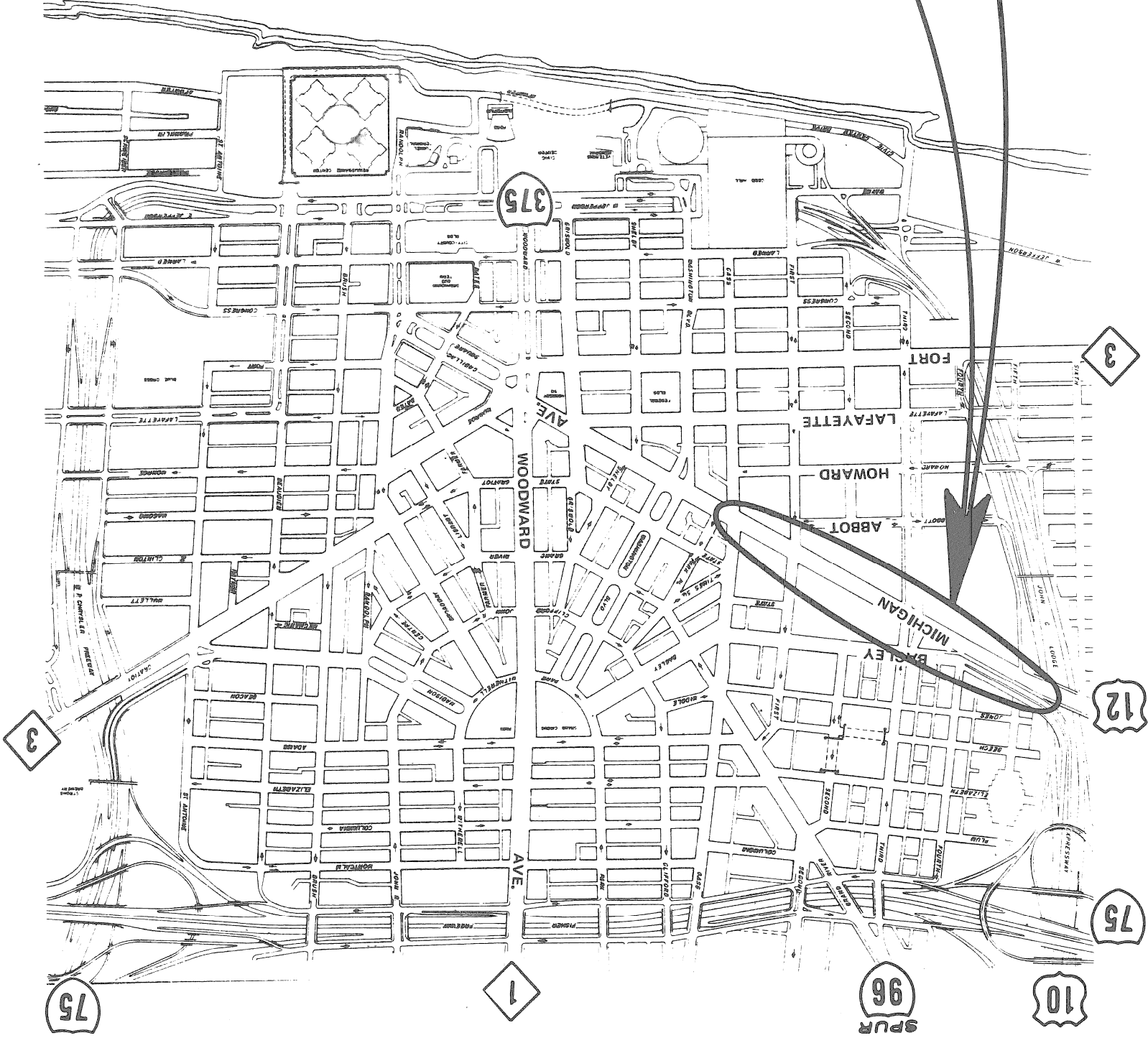
CONTROL SECTION MU 82062

JOB NUMBER 10444A

US-12

WAYNE COUNTY

CITY OF DETROIT



TITLE	1
TYPICAL CROSS SECTION	2
CONSTRUCTION SEQUENCE	3
REMOVALS	4
PLAN AND PROFILES	5-6
DETAILED GRADES	7-9
UTILITIES	10
SPECIAL DETAILS	11-13
LANDSCAPE PLAN	14
P.L.D. DETAILS	15
QUANTITIES	16

STANDARD PLANS	
I-5B	I-41A
I-9B	II-42A
I-19A	II-43B
II-28F	II-45B
II-29B	II-80A
II-30B	II-84B
II-31B	II-124B
II-39D	II-125D
II-40C	

PROPOSED PROJECT	.....
PAVED	.....
BITUMINOUS	.....
GRAVEL	.....
UNIMPROVED OR CITY STREET	.....
SECTION LINE	.....
TOWNSHIP LINE	.....
COUNTY LINE	.....
CITY OR VILLAGE LIMITS	.....
RAILROADS	.....

TITLE SHEET LEGEND

LEGEND

A.D.T.	.....
D.H.V.	.....
COMM. %	.....
DESIGN SPEED	.....

THE IMPROVEMENTS COVERED BY THESE PLANS SHALL BE DONE IN ACCORDANCE WITH THE MICHIGAN DEPARTMENT OF STATE HIGHWAYS [1976] STANDARD SPECIFICATIONS AND SUPPLEMENTAL SPECIFICATIONS.

ROUTE	US-12	JOB NUMBER	10444A	SHEET NO.	1	TOTAL SHEETS	1
-------	-------	------------	--------	-----------	---	--------------	---

ITEM NO.

CONTRACT FOR

#### APPROVALS

CHECKED	DATE	NO. BY BOARD DESIGN
RECOMMENDED FOR APPROVAL	DATE	ENGINEER OF DESIGN
RECOMMENDED FOR APPROVAL	DATE	ENGINEER OF TRAFFIC & SAFETY
RECOMMENDED FOR APPROVAL	DATE	ENGINEER OF CONSTRUCTION

DEPARTMENT OF STATE HIGHWAYS AND TRANSPORTATION  
JOHN P. WOODFORD - DIRECTOR

APPROVED BY: DEPUTY DIRECTOR - HIGHWAYS

PLANS PREPARED BY: U.S. DEPARTMENT OF TRANSPORTATION  
CITY OF DETROIT  
ENVIRONMENTAL PROTECTION DIVISION  
CITY ENGINEERING DEPARTMENT

MU 82062

10444A

I

CONTROL SECTION

MU 82062-10444A

JOB NUMBER

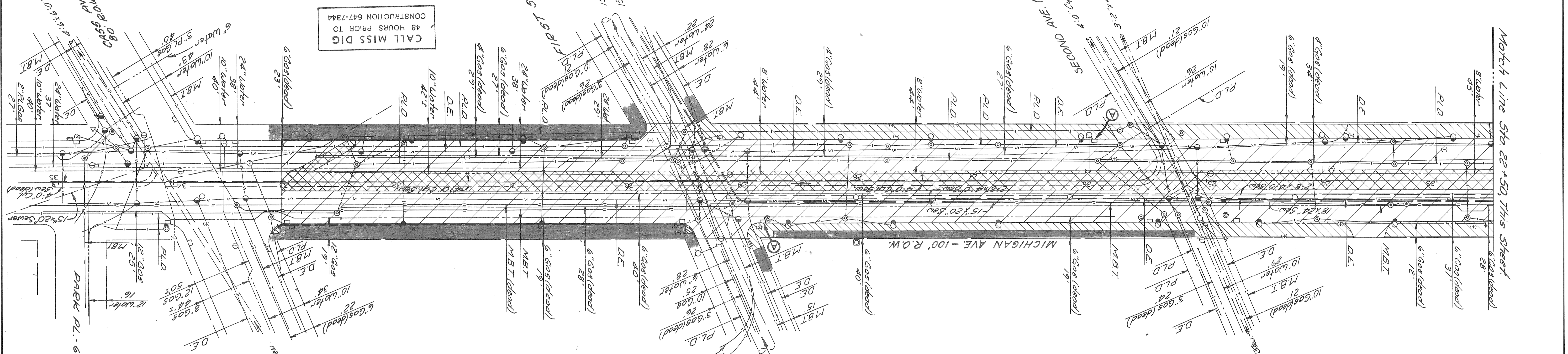




**CITY OF DETROIT**  
**CITY ENGINEERING DIVISION**  
**E.P.M.D.**

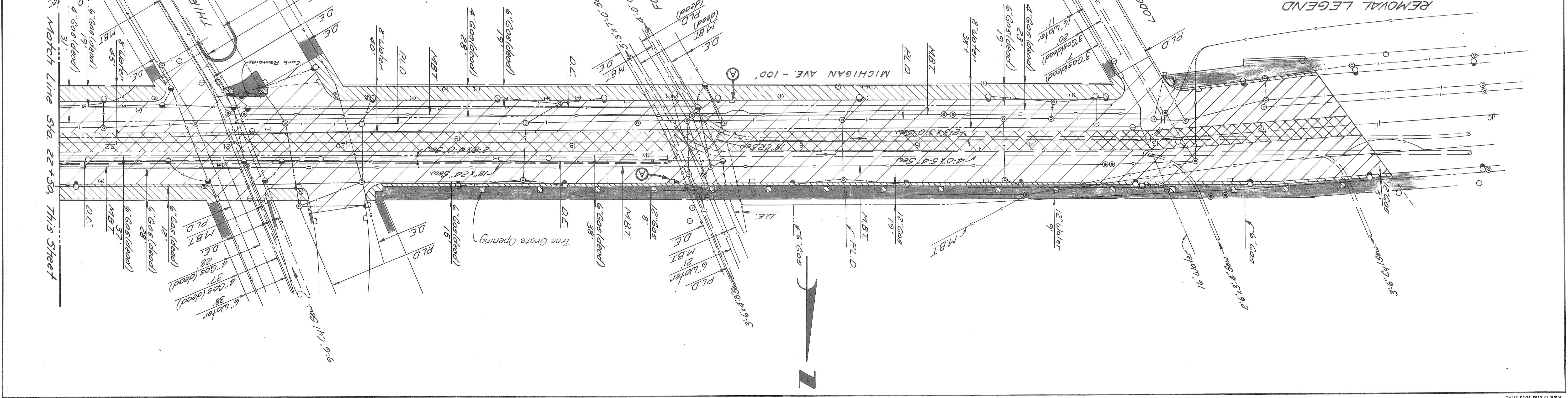
**MICHIGAN AVE. RECONSTRUCTION**  
**J.C. LODGE FWY. TO CASS AVE.**

SHEET 4 OF 16 SHEETS  
 CONTRACT NO. 10444A  
 ASSIGN. 76-22-44  
 DATE 7-27-77



**NOTES:**

1. For Utility Legend, See Sht. # 13
2. Locations of exist utility lines are based on best available records & are not guaranteed for accuracy.
3. Removing exist part consists of two pay items:  
 a. Removing bituminous surface and Removing Pavement.  
 b. Removing curb







J.C. LODGE F.W.Y. TO CASS AVE.  
 DETAILED GRADES & ALIGNMENT  
 J.C. LODGE BRIDGE TO LODGE SERV. DR.

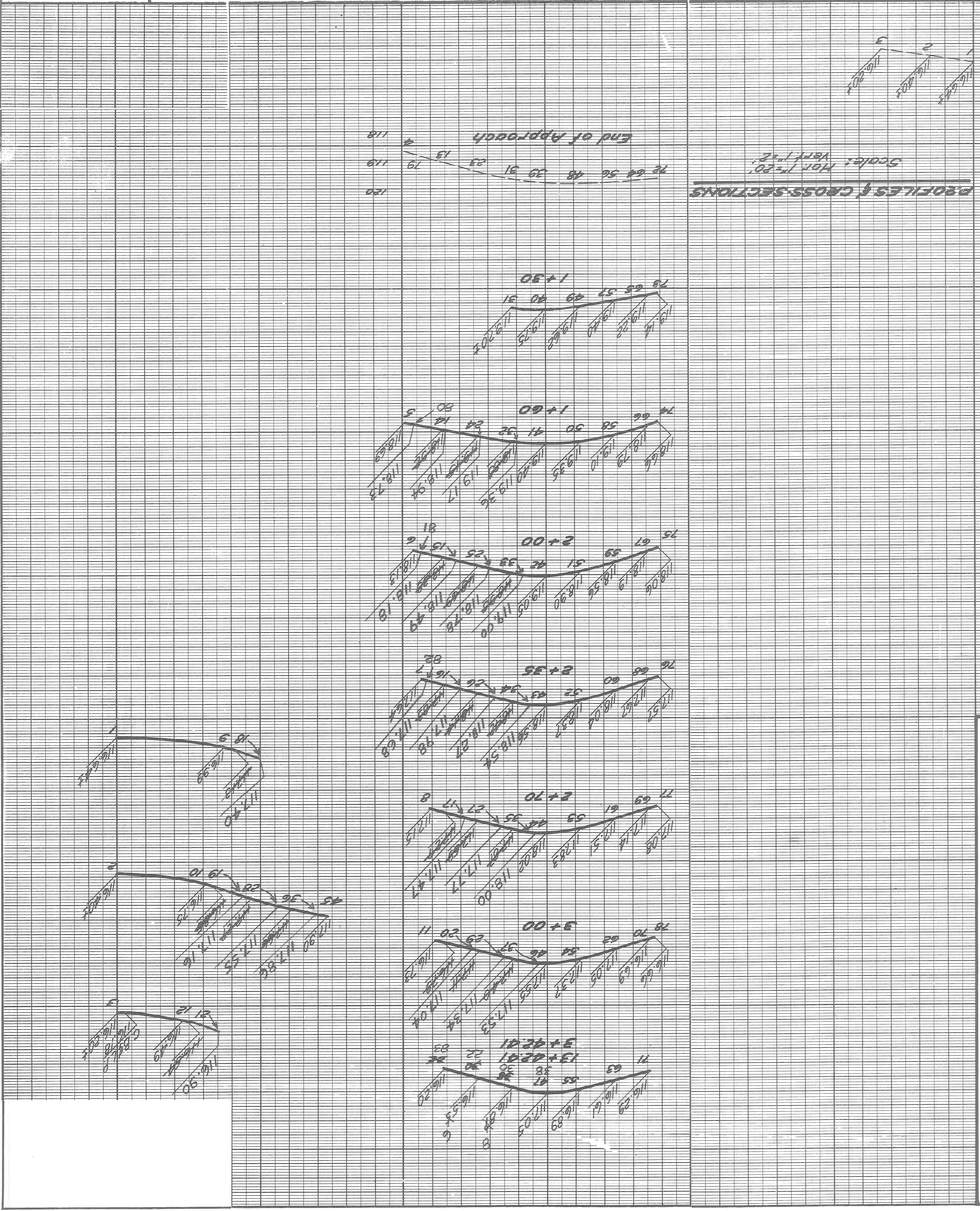
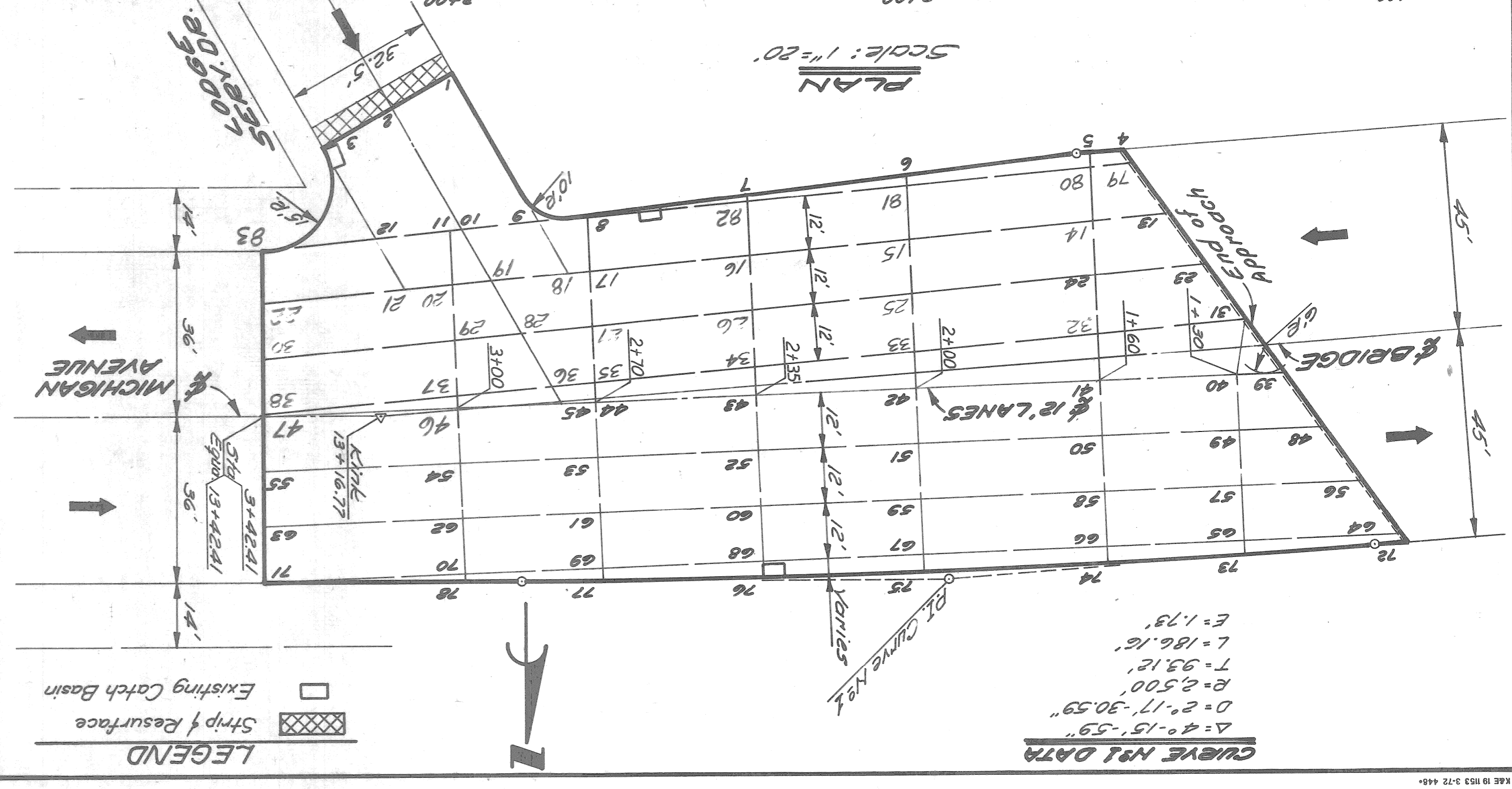
CITY OF DETROIT  
 CITY ENGINEERING DIVISION  
 E.P.M.D.

APPROVED: *Walter E. Jettner*  
 ENGINEER OF EXPRESSWAYS

DESIGNED BY: *MMJ*  
 DRAWN BY: *MMJ*  
 CHECKED BY: RP  
 FINAL REVIEW: RP

REVISIONS	DESCRIPTION	DATE	BY
1	Lane lines south of & revised, corresponding profile changes made	3/78	MMJ

Revised Detailed Grade Information will be furnished to the Contractor after award of the Contract.

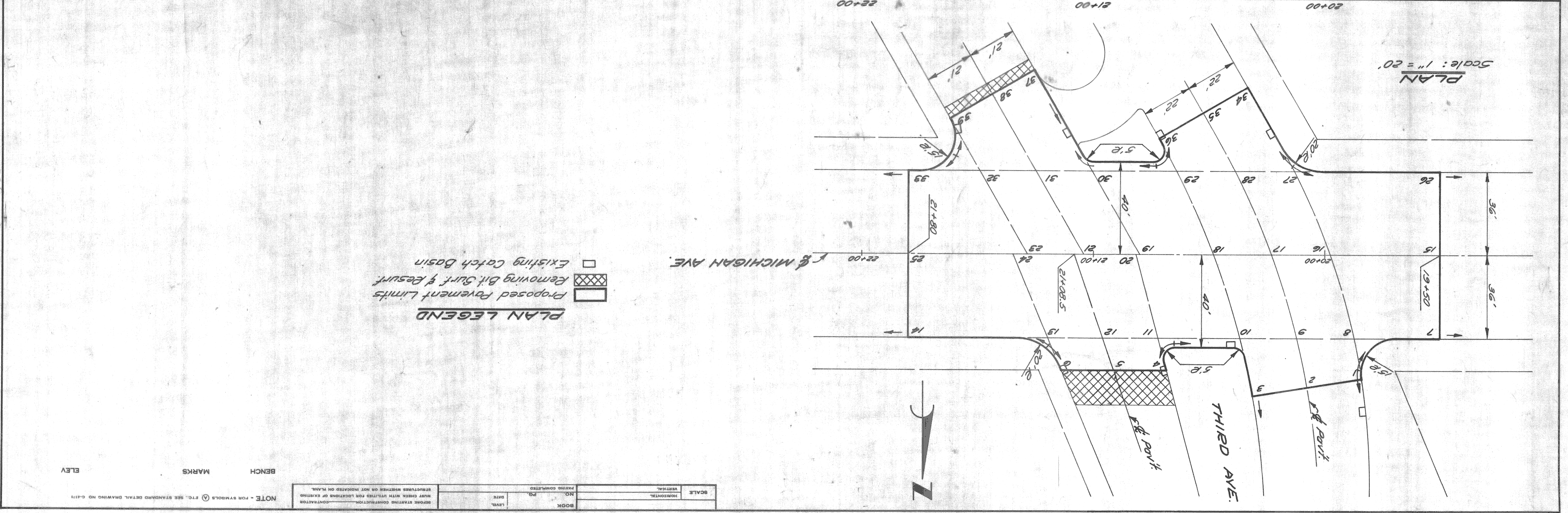
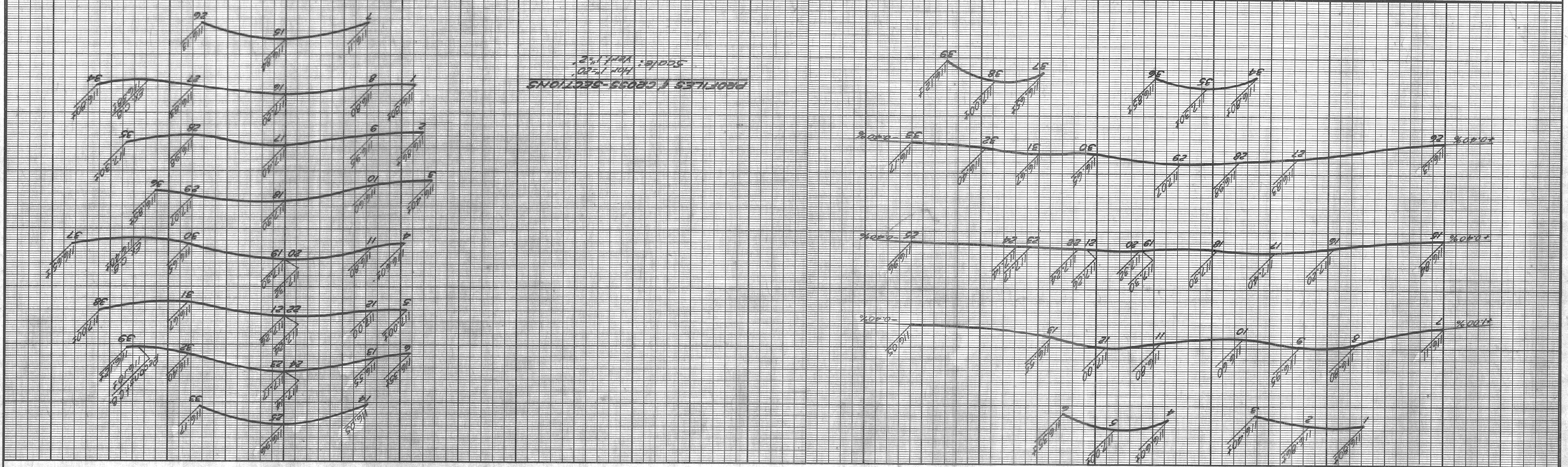


DATE	7-27-77
ASSIGNMENT NO.	76-22-44
CONTRACT NO.	10444A
SHEET NO.	8 of 16 SHEETS

MICHIGAN AVE. RECONSTRUCTION  
 J.C. LODGE FWY. TO CASS AVE.  
 DETAILED GRADES  
 MICHIGAN AVE AT THIRD AVE.

CITY OF DETROIT  
 CITY ENGINEERING DIVISION  
 E.P.M.D.

REVISIONS		DESCRIPTION	DATE	BY	CHECKED	APPROVED





REVISIONS

NO.	DATE	DESCRIPTION

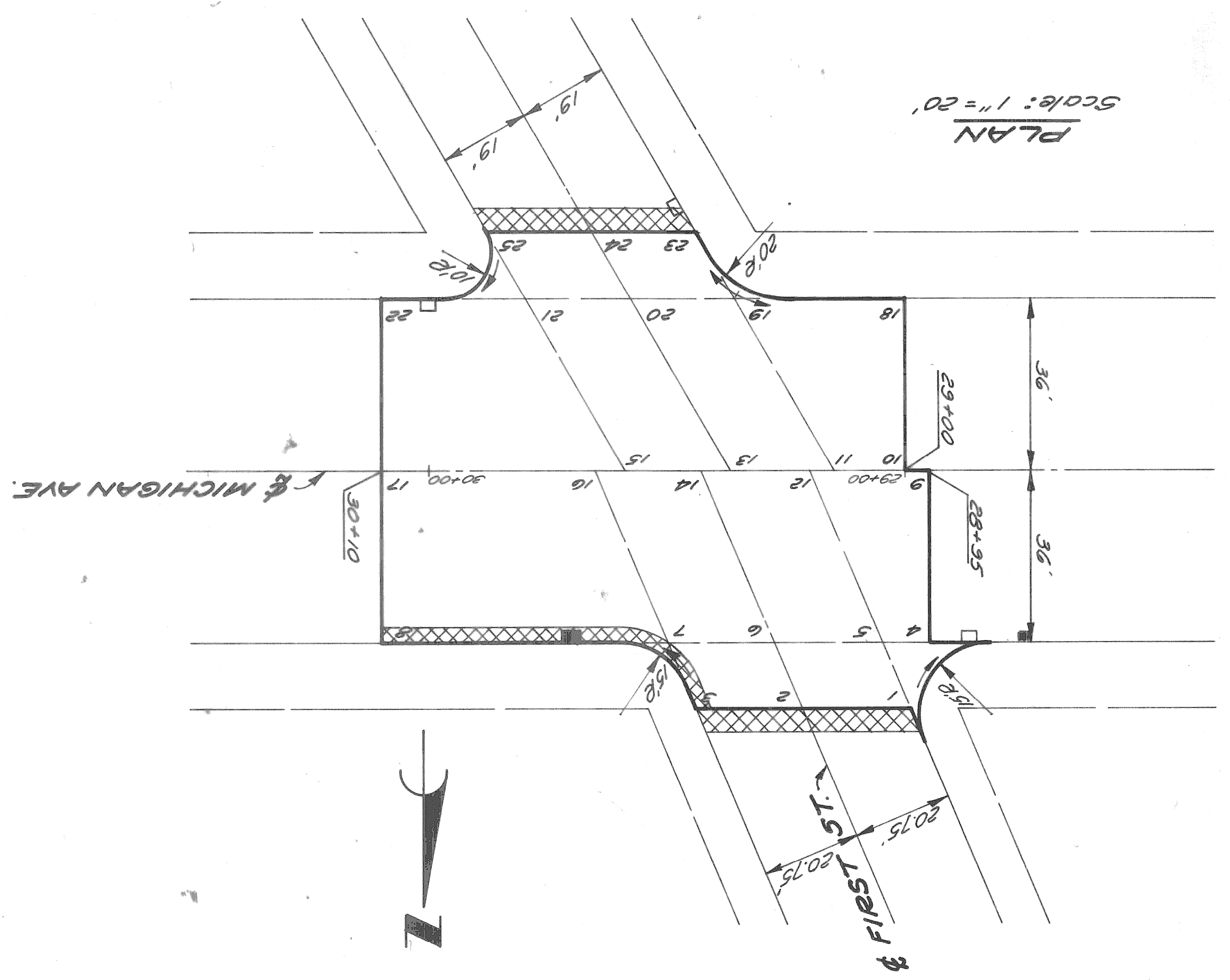
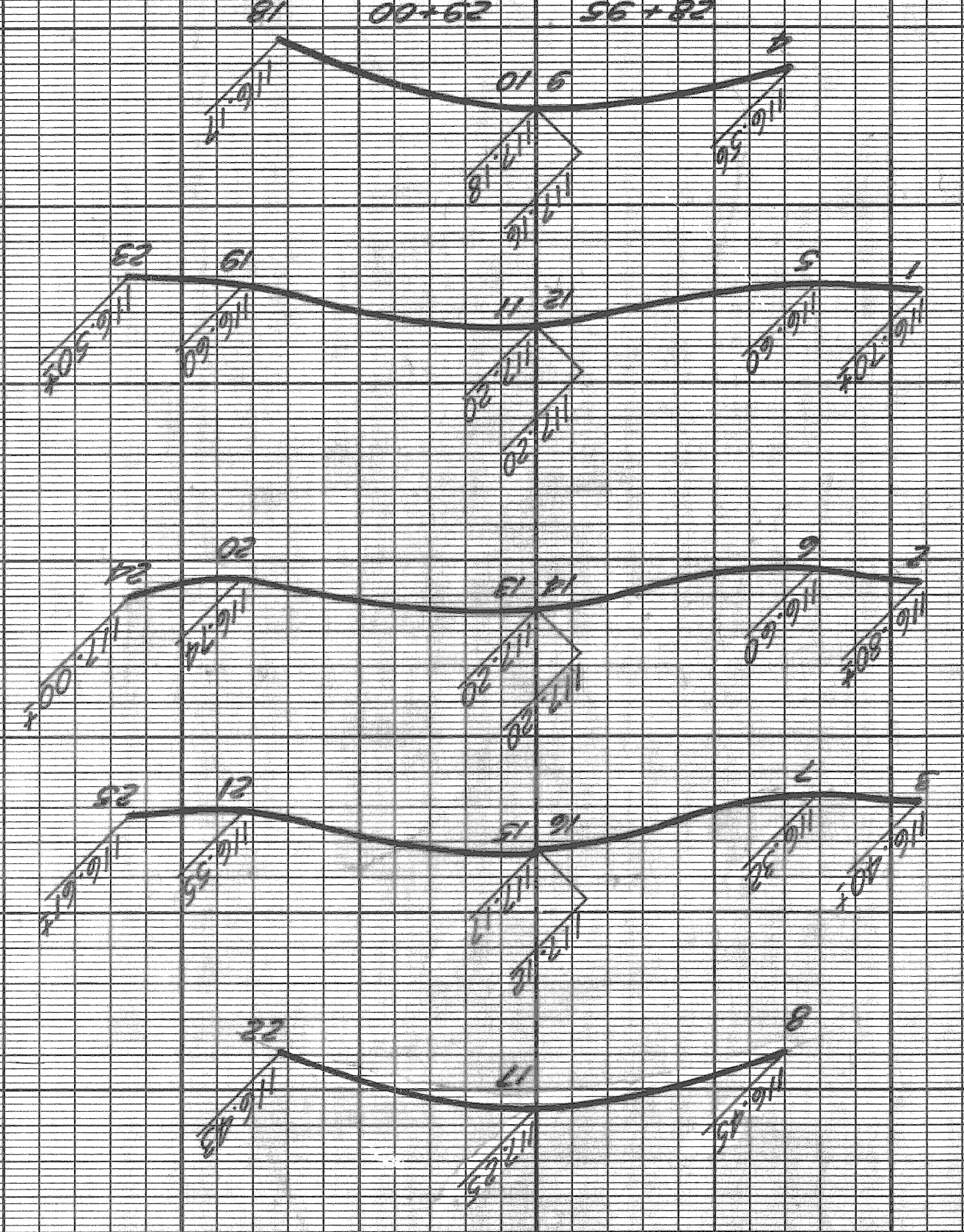
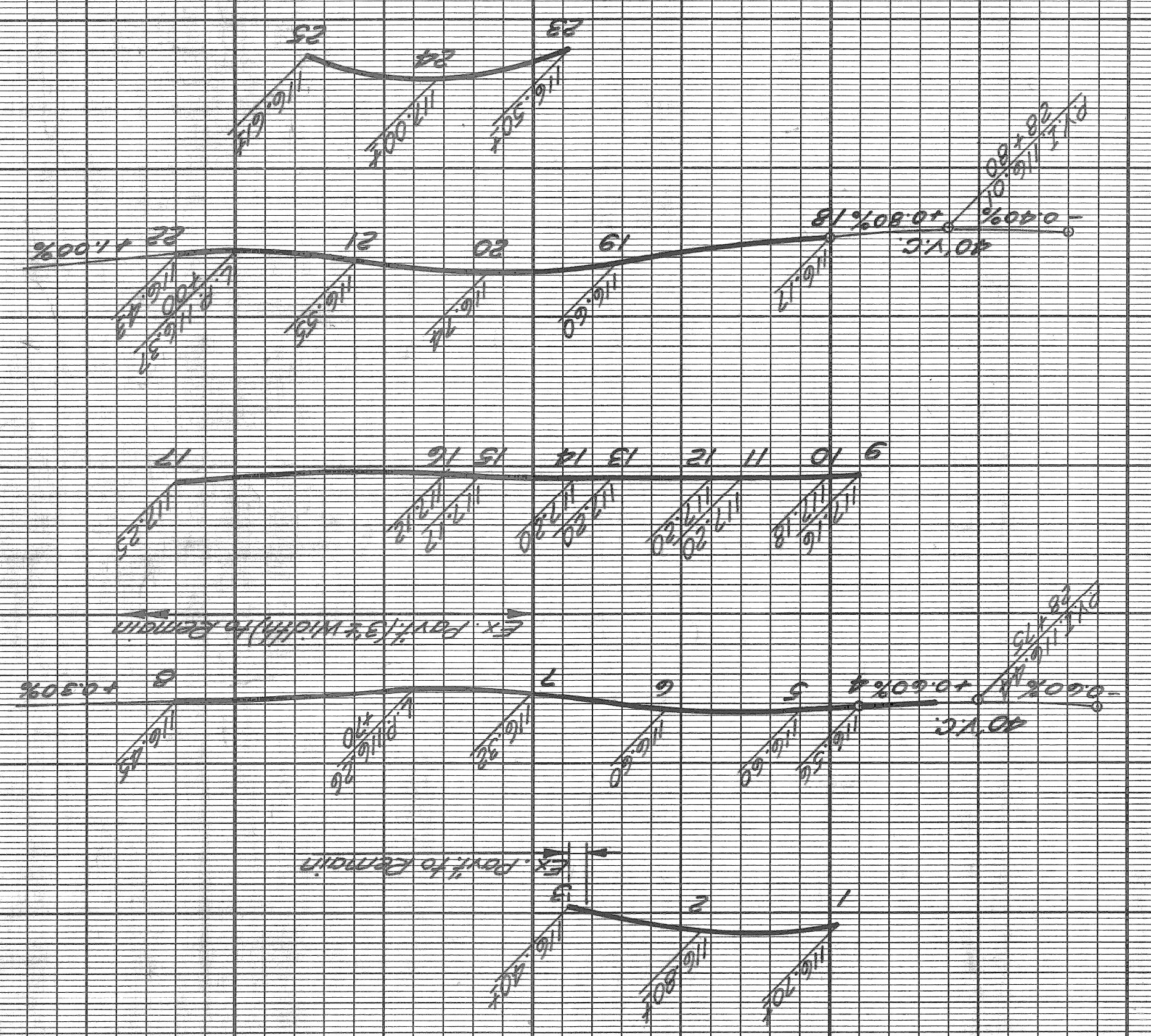
BY		
CHECKED BY		
APPROVED BY		
PLAN	RP	
GRADE	WB	
ESTIMATE		
FINAL		

APPROVED BY  
 ENGINEER OF SURVEY  
*Allen E. [Signature]*  
 HIGHWAY ENGINEER

CITY OF DETROIT  
 CITY ENGINEERING DIVISION  
 E.P.M.D.

MICHIGAN AVE. RECONSTRUCTION  
 J.C. LODGE FWY. TO CASS AVE.  
 DETAILED GRADES  
 MICHIGAN AVE. AT FIRST ST.

INDEXED  
 SHEET 9 OF 16 SHEETS  
 CONTRACT NO. 10444A  
 ASSIGNMENT NO. 76-22-44  
 DATE 7-27-77



**PLAN LEGEND**

- ▭ Proposed Pavement Limits
- ▨ Removing Bit. Surf. & Resurf. or Heater Plane
- Proposed Catch Basin
- Existing Catch Basin

SCALE:	HORIZONTAL	
SCALE:	VERTICAL	
BOOK	NO.	PAVING COMPLETED
LEVEL	DATE	CONTRACTOR

NOTE - FOR SYMBOLS (A) ETC. SEE STANDARD DETAIL DRAWING NO. C-1175  
 BENCH MARKS  
 ELEV.



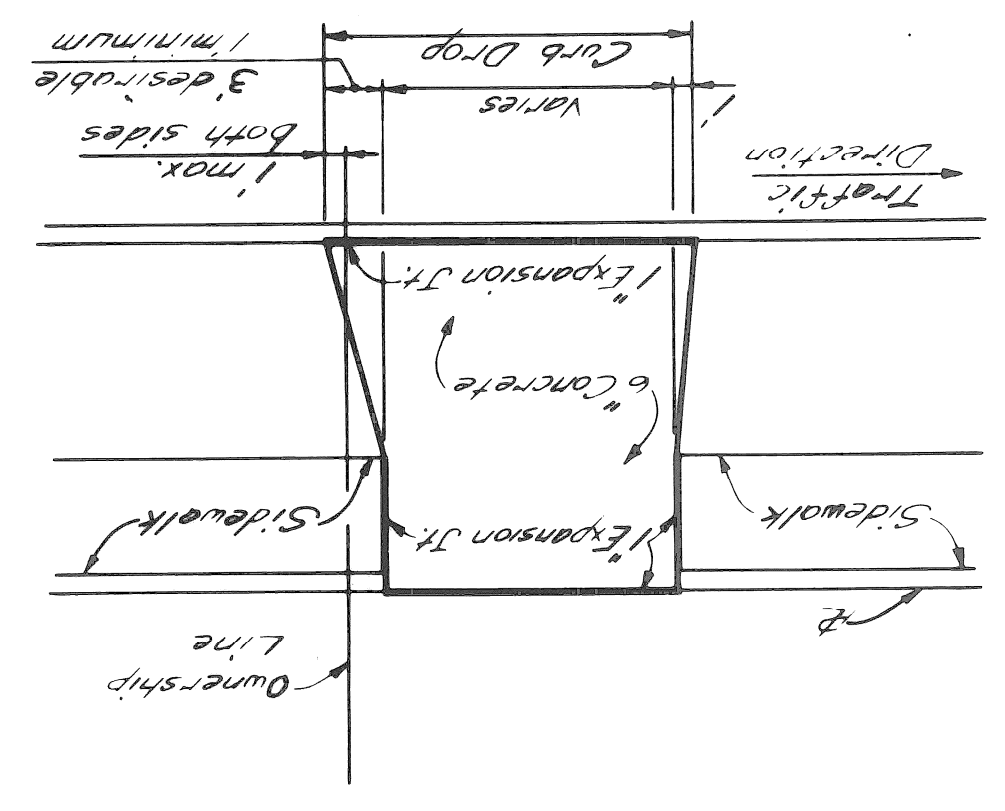




SPECIAL STANDARDS & SPECIAL DETAILS

MICHIGAN AVE. RECONSTRUCTION  
 J.C. LODGE FWY. TO CASS AVE.

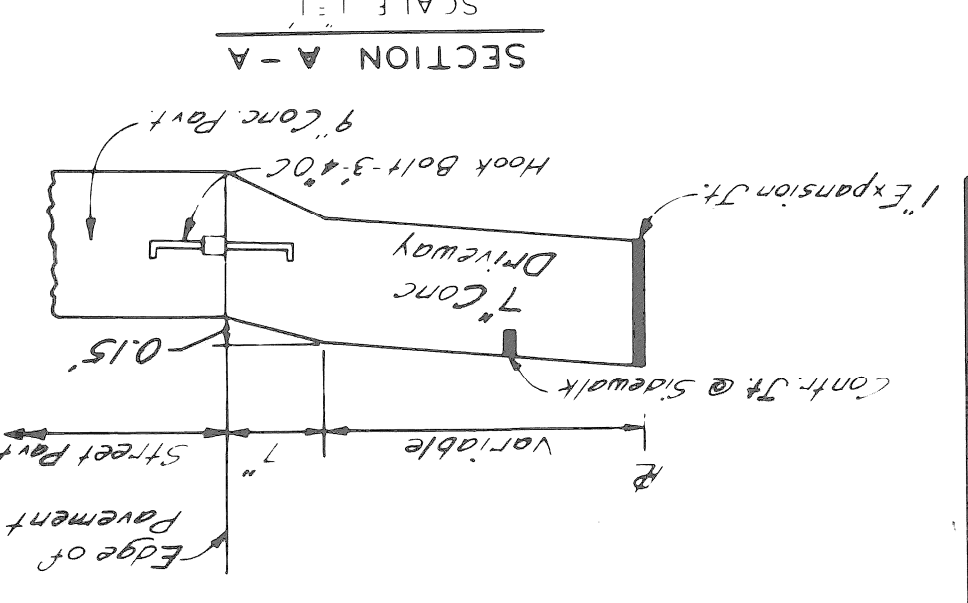
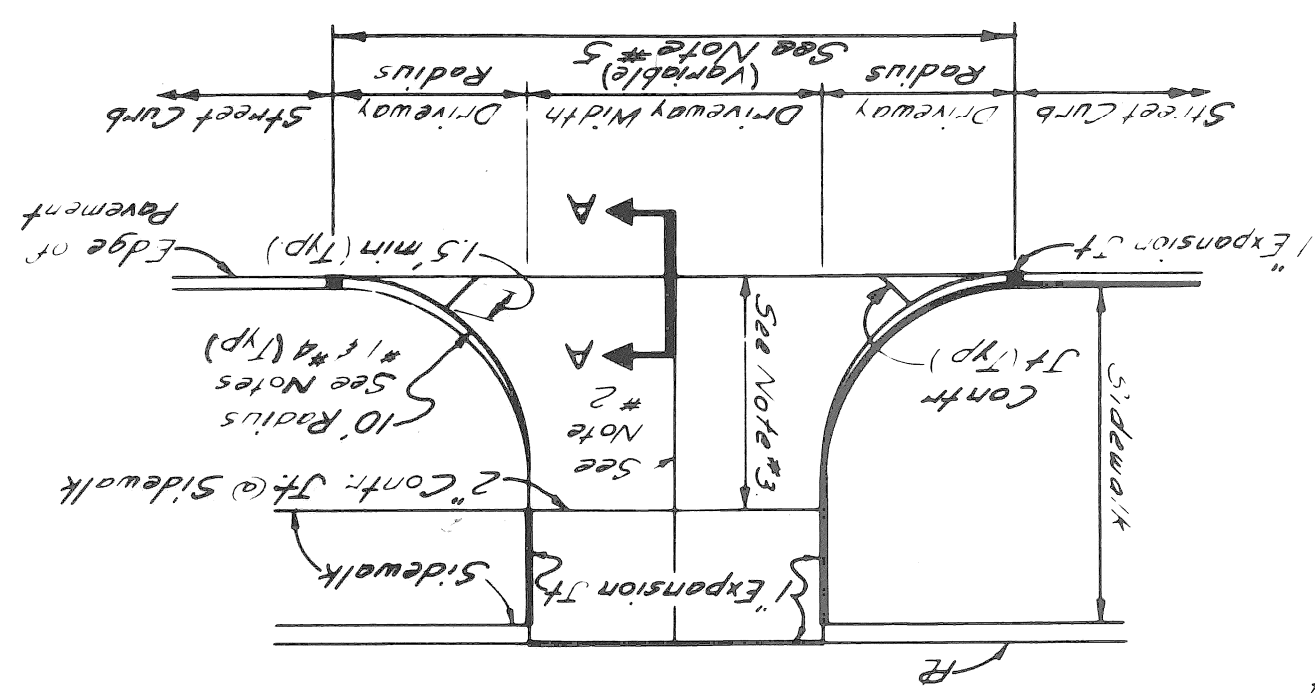
RESIDENTIAL DRIVEWAY DETAIL  
 SCALE 1"=10'



**NOTES - COMMERCIAL DRIVEWAY**

1. Transition edge of driveway from curb of the street to no curb at the end of the driveway radius.
2. Where driveway exceeds 15' in width, a contraction joint shall be placed longitudinally along it.
3. When distance exceeds 15', a transverse contraction joint will be required.
4. Radius 10' unless otherwise directed by the Engineer, or as shown on plans.
5. All work and materials required to construct the driveway between the end of returns will be paid for as "Conc. Pavt" of the specified thickness.

COMMERCIAL DRIVEWAY DETAIL  
 SCALE 1"=10'



COLOR	SYMBOL	DESCRIPTION
BLACK	---	PROPERTY AND LOT LINES
	○	SEWER MANHOLE
	○	PLC MANHOLE
	○	WATER MANHOLE OR GRATE
	○	HEADERS AT RETURNS
	○	EXISTING CURB LINES OR
	○	EDGE OF PAVEMENT
	---	PROPOSED CURB OR PAVING
	---	ON INTERSECTING STREET
	---	PROPOSED SEWER TO CATCH BASINS
	---	EXISTING LATERAL SEWERS
	---	EXISTING PUBLIC SEWERS
	---	EXISTING GAS LINES
	---	EXISTING WATER LINES
	---	ELEV OF SEWER INVERT
	---	PROPOSED : B.M.H. & INLET SEWER
	---	CURB LINE
	---	ELEV
	---	EXISTING C.B.M.H. & INLET SEWERS
	---	PROPOSED C.B.M.H. & INLET SEWERS
	---	ON INTERSECTING STREETS

SYMBOL	DESCRIPTION
○	STREET SIGN POST
□	CATCH BASIN
(M)	WATER METER
(-)	WATER SHUT OFF
(+)	GAS MANHOLE OR GRATE
○	WESTERN UNION MANHOLE
○	MICHIGAN BELL MANHOLE
○	EDISON BELL MANHOLE
○	EDISON ELECTRIC MANHOLE
○	FIRE DEPT MANHOLE
○	ON INTERSECTING STREET
○	FIRE DEPT MANHOLE
○	EDISON ELECTRIC MANHOLE
○	EDISON BELL MANHOLE
○	MICHIGAN BELL MANHOLE
○	WESTERN UNION MANHOLE
○	GAS MANHOLE OR GRATE
○	WATER MANHOLE OR GRATE
○	PLC MANHOLE
○	SEWER MANHOLE
○	PROPERTY AND LOT LINES
○	PROPOSED CURB OR PAVING
---	ON INTERSECTING STREET
---	PROPOSED SEWER TO CATCH BASINS
---	EXISTING LATERAL SEWERS
---	EXISTING PUBLIC SEWERS
---	EXISTING GAS LINES
---	EXISTING WATER LINES
---	ELEV OF SEWER INVERT
---	PROPOSED : B.M.H. & INLET SEWER
---	CURB LINE
---	ELEV
---	EXISTING C.B.M.H. & INLET SEWERS
---	PROPOSED C.B.M.H. & INLET SEWERS
---	ON INTERSECTING STREETS

SYMBOL	DESCRIPTION
○	STREET SIGN POST
□	CATCH BASIN
(M)	WATER METER
(-)	WATER SHUT OFF
(+)	GAS MANHOLE OR GRATE
○	WESTERN UNION MANHOLE
○	MICHIGAN BELL MANHOLE
○	EDISON BELL MANHOLE
○	EDISON ELECTRIC MANHOLE
○	FIRE DEPT MANHOLE
○	ON INTERSECTING STREET
○	FIRE DEPT MANHOLE
○	EDISON ELECTRIC MANHOLE
○	EDISON BELL MANHOLE
○	MICHIGAN BELL MANHOLE
○	WESTERN UNION MANHOLE
○	GAS MANHOLE OR GRATE
○	WATER MANHOLE OR GRATE
○	PLC MANHOLE
○	SEWER MANHOLE
○	PROPERTY AND LOT LINES
○	PROPOSED CURB OR PAVING
---	ON INTERSECTING STREET
---	PROPOSED SEWER TO CATCH BASINS
---	EXISTING LATERAL SEWERS
---	EXISTING PUBLIC SEWERS
---	EXISTING GAS LINES
---	EXISTING WATER LINES
---	ELEV OF SEWER INVERT
---	PROPOSED : B.M.H. & INLET SEWER
---	CURB LINE
---	ELEV
---	EXISTING C.B.M.H. & INLET SEWERS
---	PROPOSED C.B.M.H. & INLET SEWERS
---	ON INTERSECTING STREETS

STANDARD SYMBOLS FOR UTILITIES  
 DETROIT FIRE OR POLICE DEPT. CONDUITS (PLC IDENTIFICATION)  
 PLC CONDUITS  
 MICHIGAN BELL TELEPHONE DUCTS  
 WESTERN UNION DUCTS  
 DETROIT EDISON STEAM CONDUIT  
 DETROIT EDISON ELECTRIC CONDUIT

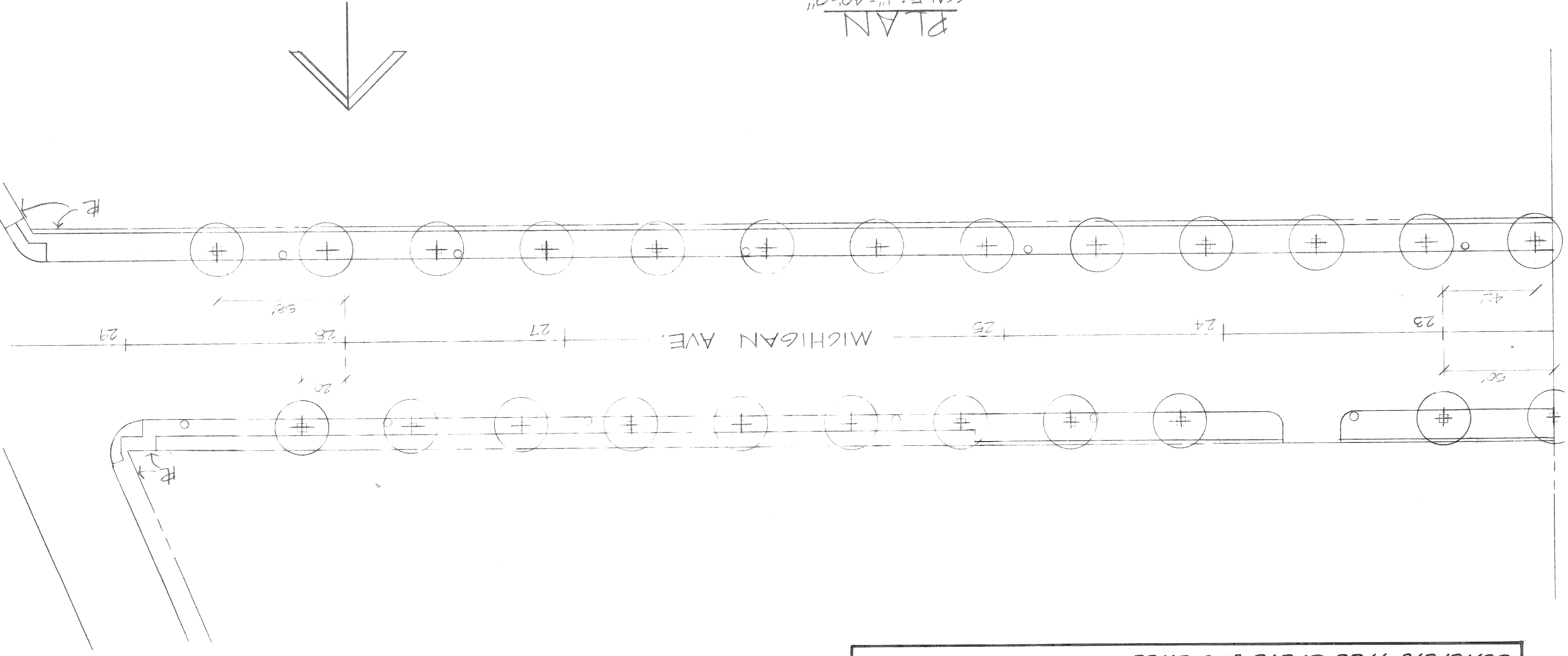
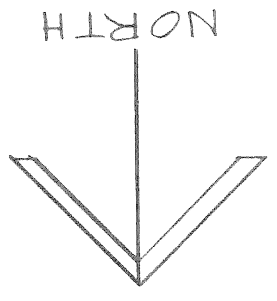
DEPARTMENT OF PUBLIC WORKS  
 BUREAU OF DESIGN  
 CITY ENGINEER'S OFFICE  
 PAYING  
 DETAIL NO. 25  
 C-902-A

REVISIONS LISTED BY COORDINATES ON SHEET

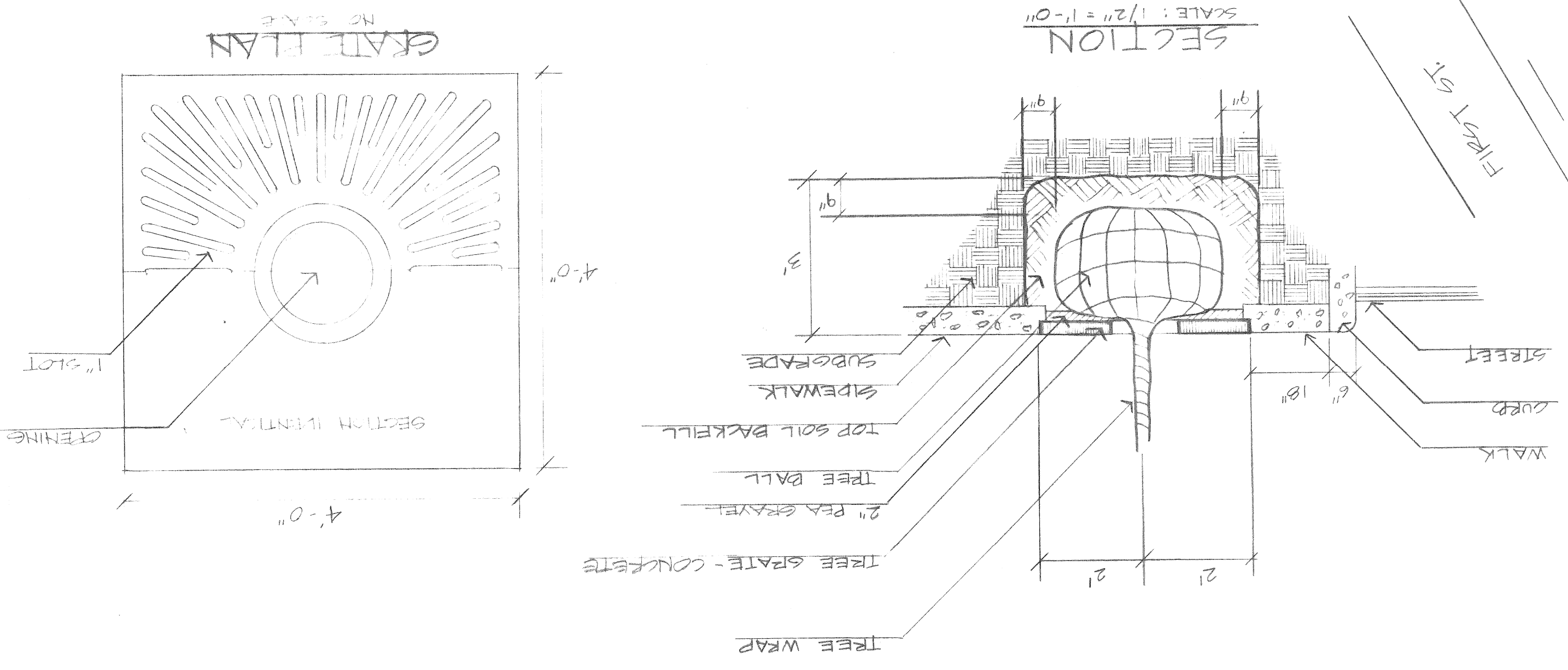
REVISIONS LOCATED BY COORDINATES ON SHEET COORD. DESCRIPTION DATE DRN. CKD. APPD. DATE		CHECKED BY TRACED BY DRAWN BY DESIGNED BY	APPROVED ENGINEER OF STREETS HIGHWAY ENGINEER
MICHIGAN AVE. RECONSTRUCTION J.C. LODGE FWT. TO CLASS AVE.		W.P. 6/30/77	MICHIGAN AVE. RECONSTRUCTION LANDSCAPE : MEN UNIT
CITY OF DETROIT CITY ENGINEERING DIVISION - E.P.M.D.		PLANTING PLAN & DETAIL	
SHEET 14 OF 16 SHEETS CONTRACT NO. 10444A ASSIGNMENT NO. 76-22-44 DATE 7-27-77		PLANTING PLAN & DETAIL	

MATCH LINE STA. 22+50, THIS SHEET

PLAN  
SCALE: 1" = 40'-0"



TREE PLANTING DETAIL

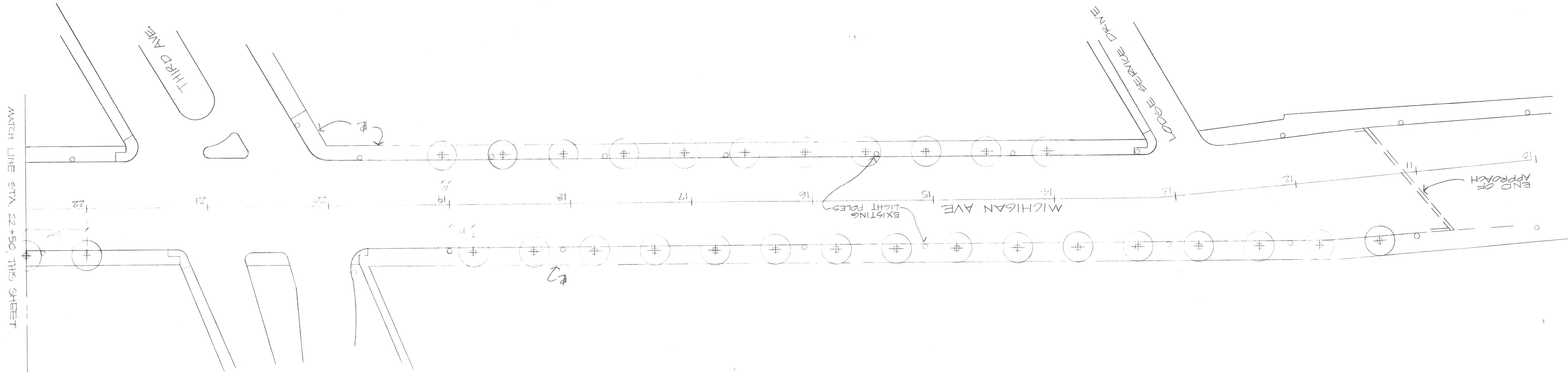


**LANDSCAPE QUANTITIES BILLED TO THIS SHEET**

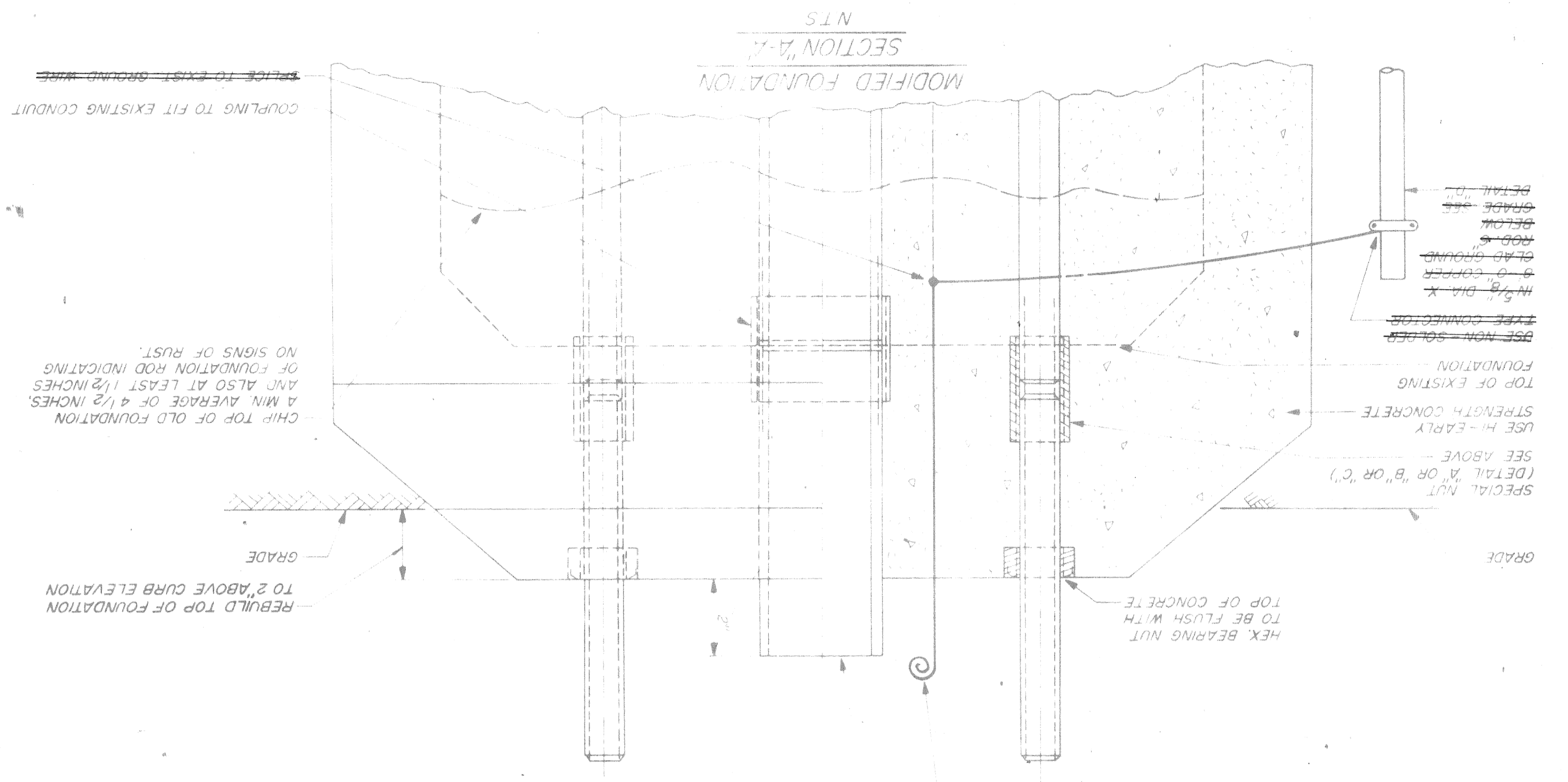
Site Preparation ..... Lump Sum  
 Marshhall Seedless Green Ash - Planted in Place - 3/4" - 4" ..... 52 Each  
 Concrete Tree Grote Installed ..... 52 Each

PLANT SCHEDULE

QTY	SCIENTIFIC NAME	COMMON NAME	SIZE	ROOT SPAC.	REMARKS
52	FRAXINUS PENNSYLVANICA 'SEEDLESS'	MARSHALL GREEN ASH	3-3/4"	50"	SPACING TO BE ADJUSTED WHEN IN CONFLICT WITH STREET LIGHTS CENTER WHICH IN CONFLICT WITH MINIMUM 9' FROM LIGHTS OF TREE TO BE LOCATED

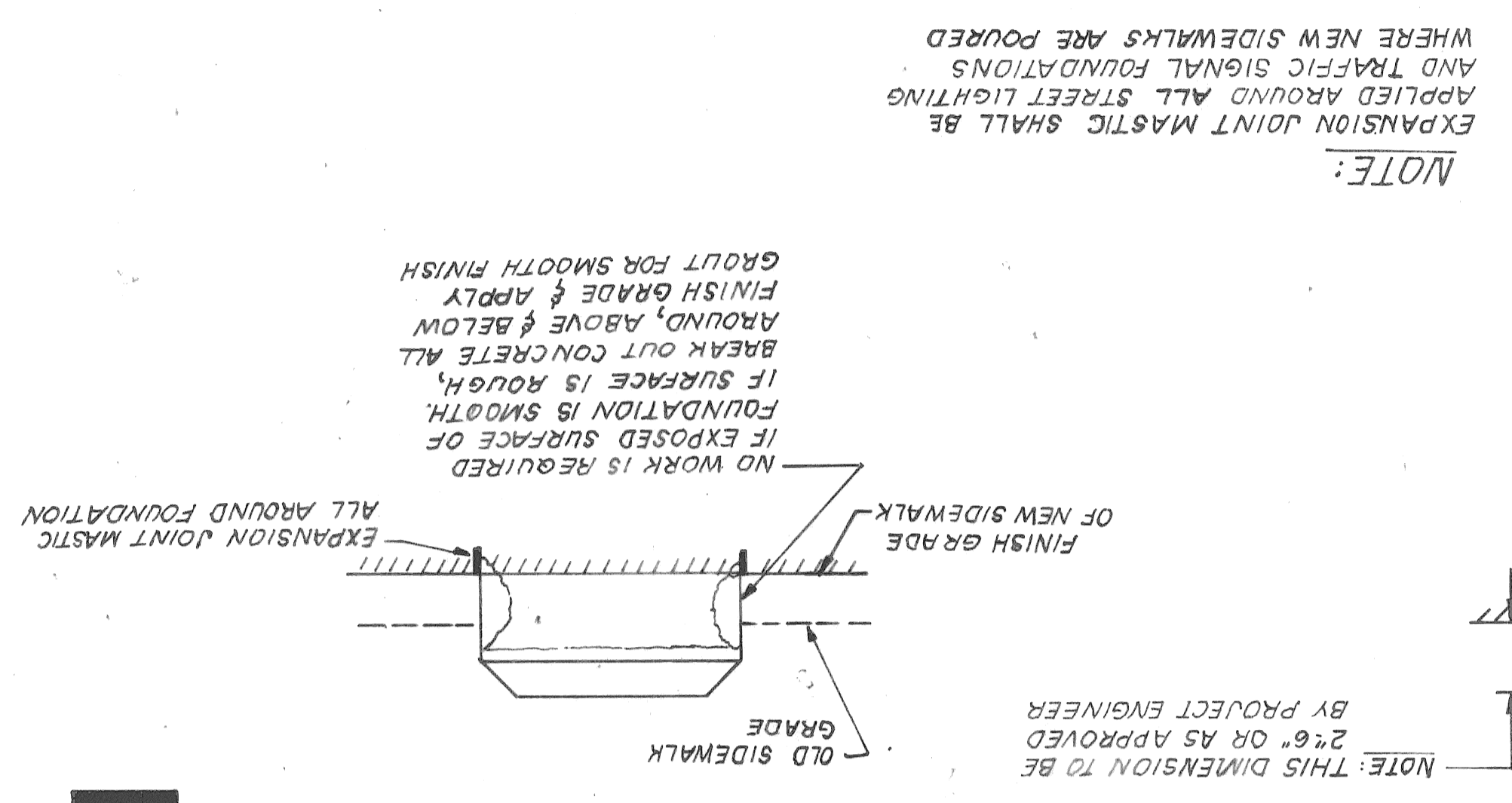


MATCH LINE STA. 22+50, THIS SHEET



- NOTE: THE TOP OF FOUNDATION SHALL EXTEND 1" BEYOND THE LIGHTING STANDARD OR TRAFFIC SIGNAL STANDARD
- EXTEND & CONNECT TO GROUND, #2 OR LARGER STRANDED GROUND WIRE WITH 18" SLACK ABOVE F.W. TOP
- CONCRETE EXTENSION TO BE SAME SIZE AS EXISTING
- PLAN FOUNDATION N.T.S.
- NOTES:
- 1 REMOVE LIGHTING STANDARD
  - 2 CHIP OFF TOP OF FOUNDATION (SEE DRWG.)
  - 3 CHASE THREADS ON FOUNDATION BOLTS 1 3/8"
  - 4 EXTEND CONDUIT (SEE DRWG.)
  - 5 INSTALL SPECIAL NUTS (SHOWN IN DETAIL)
  - 6 COAT TOP OF FOUNDATION WITH A BONDING AGENT
  - 7 MOUNT THE FORM AND POUR THE CONCRETE
  - 8 COAT BOLTS AND NUTS WITH "NO-OX-10" GREASE
  - 9 RE-INSTALL STANDARD & RESTORE WIRING.

FOUNDATION MODIFICATIONS N.T.S.



① ACCEPTABLE HEIGHT  
 NEW SIDEWALK GRADE - NOT A PAY ITEM.  
 NO CONSTRUCTION REQUIRED.  
 EXISTING CONCRETE FOUNDATION FOR STREET LIGHT OR TRAFFIC SIGNAL STANDARD (STANDARD NOT SHOWN)

② REQUIRED CONSTRUCTION  
 WHEN SIDEWALK GRADE IS LOWERED - PAID FOR AS "REPAIR STREET LIGHTING FOUNDATION SIDES"

③ REQUIRED CONSTRUCTION  
 WHEN NEW SIDEWALK GRADE IS ABOVE EXISTING FOUNDATION TOP - PAID FOR AS "RAISE STREET LIGHTING FOUNDATION TOP"

SEE LEFT SIDE OF THIS SHEET.  
 "REPAIR STREET LIGHTING FOUNDATION TOP" IS ABOVE EXISTING FOUNDATION TOP - PAID FOR AS "RAISE STREET LIGHTING FOUNDATION TOP"

