

# CITY OF DETROIT CITY ENGINEERING DIVISION - E.P.M.D.

IN CO-OPERATION WITH  
MICHIGAN DEPARTMENT OF STATE HIGHWAYS AND TRANSPORTATION

AND  
FEDERAL HIGHWAY ADMINISTRATION

PLAN AND PROFILE OF PROPOSED

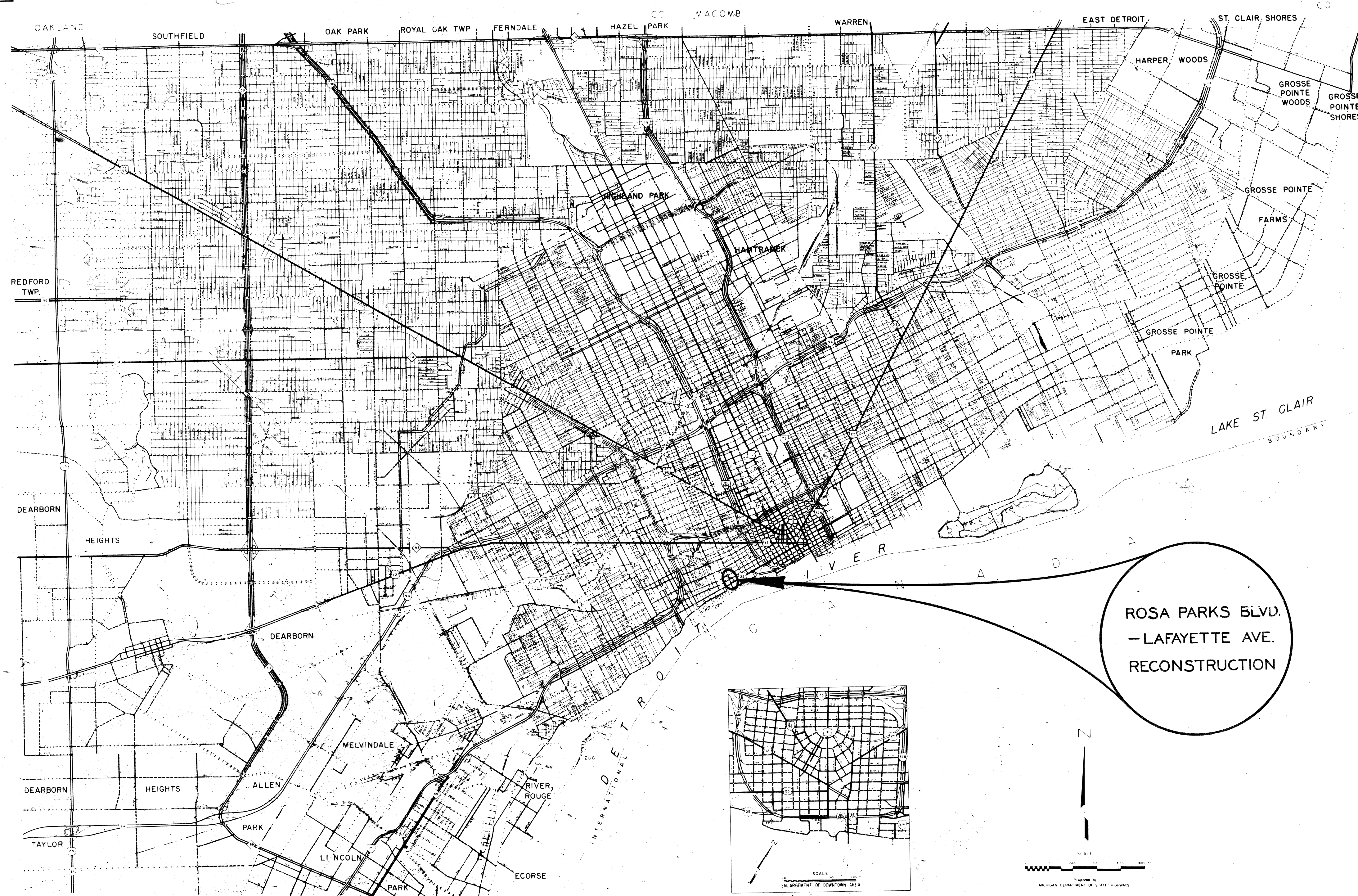
FEDERAL AID URBAN PROJECT NO. MICHIGAN *MG 2000(00)*

*CONTROL SECTION MU 82400 JOB NO. 07110 A*

B.P.R. DIV. NO. 4	STATE MICH.	PROJECT NO.	FISCAL YEAR	SHEET NO. 1	TOTAL SHEETS
STREET	CITY	COUNTY	TWP.	SHEET NO.	TOTAL SHEETS
	DETROIT	WAYNE		1	

THE IMPROVEMENTS COVERED BY THESE PLANS SHALL BE DONE IN ACCORDANCE WITH THE MICHIGAN DEPARTMENT OF STATE HIGHWAYS CURRENT STANDARD SPECIFICATIONS AND SUPPLEMENTAL SPECIFICATIONS.

INDEX TO SHEETS



*Plan No. 8)*

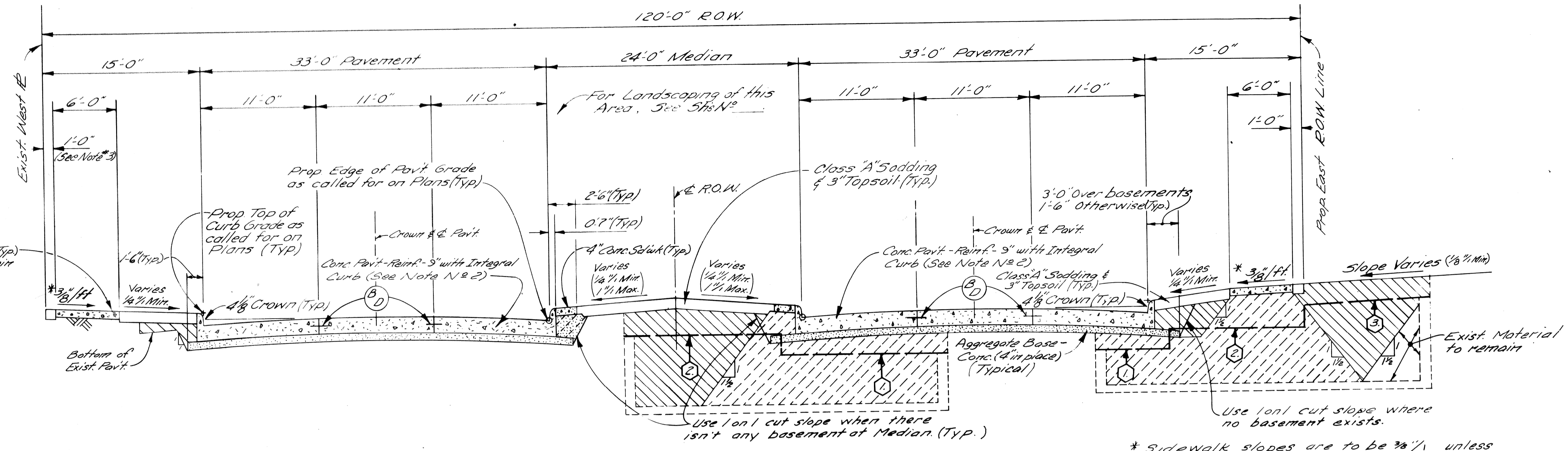
<b>CONTRACT FOR RECONSTRUCTION</b>	
LOCAL AUTHORITY APPROVAL CITY OF DETROIT CITY ENGINEERING DIVISION ENVIRONMENTAL PROTECTION & MAINTENANCE DEPARTMENT	
APPROVED BY _____	DATE _____
ASSISTANT CITY ENGINEER	
APPROVED BY _____	DATE _____
CITY ENGINEER	
RECOMMENDED FOR APPROVAL	
BY _____	DATE _____
F.A.U. ENGINEER	
PLANS CHECKED BY _____	DATE _____
DEPARTMENT OF STATE HIGHWAYS APPROVAL APPROVED FOR COMMISSION	
BY _____	DATE _____
DEPUTY DIRECTOR-HIGHWAYS	
PREPARED UNDER SUPERVISION OF	
_____	REGISTRATION NO. _____
REGISTERED PROFESSIONAL ENGINEER	
_____	CITY OF DETROIT
CITY OF DETROIT	ORGANIZATION
_____	DETROIT MICHIGAN
DETROIT MICHIGAN	ADDRESS
( SEAL )	
U. S. DEPARTMENT OF TRANSPORTATION FEDERAL HIGHWAY ADMINISTRATION	
APPROVED _____	DATE _____
DISTRICT ENGINEER	

FILE NO. NO. 350 STENCIL	STATE PROJECT	FEDERAL PROJECT	SHEET NO.
--------------------------------	---------------	-----------------	-----------

ORIGINAL

The following are estimated quantities for ROSA PARKS BLVD - LA FAYETTE which may be used at the discretion of the Engineer.

4" Concrete Sidewalk	59. Ft.
Removing Sidewalk	59. Yds.
Basement Cleanout	Cu. Yds.

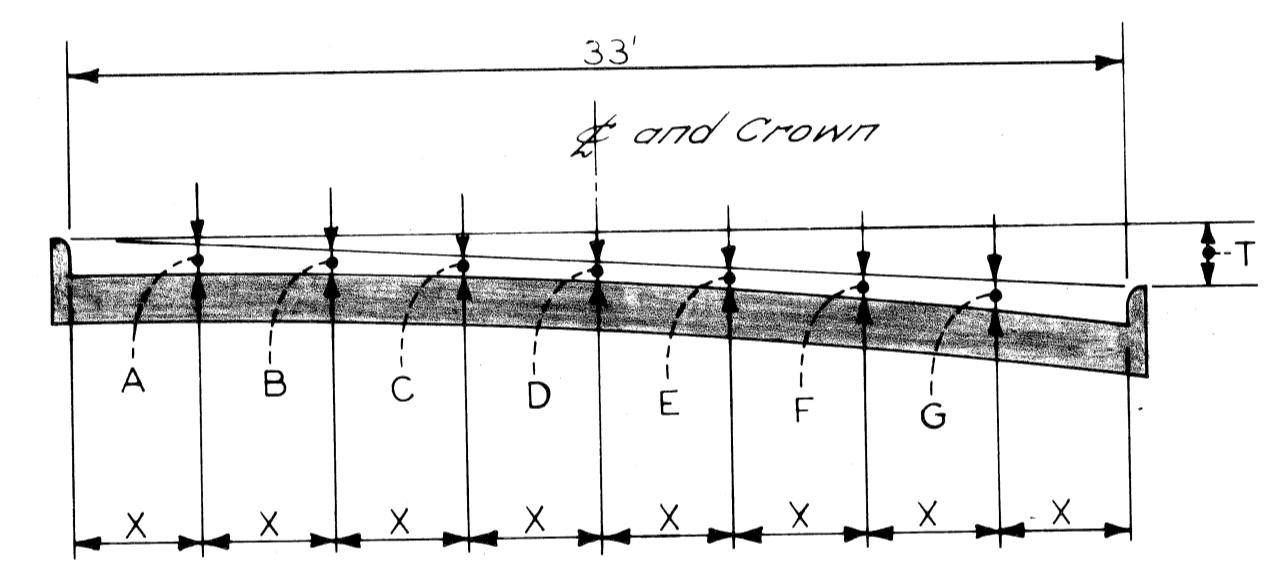


**BASEMENT WALL REMOVAL:**

- Remove walls 3'-0" below Prop Pav't. Surface to 2'-0" behind Face of Curb.
- Remove walls in Median and Sidewalk Areas to the bottom of the Prop. Pav't Slab.
- Remove walls in areas outside the 120' R.O.W. to 1'-0" below the Prop Surface Elevations.

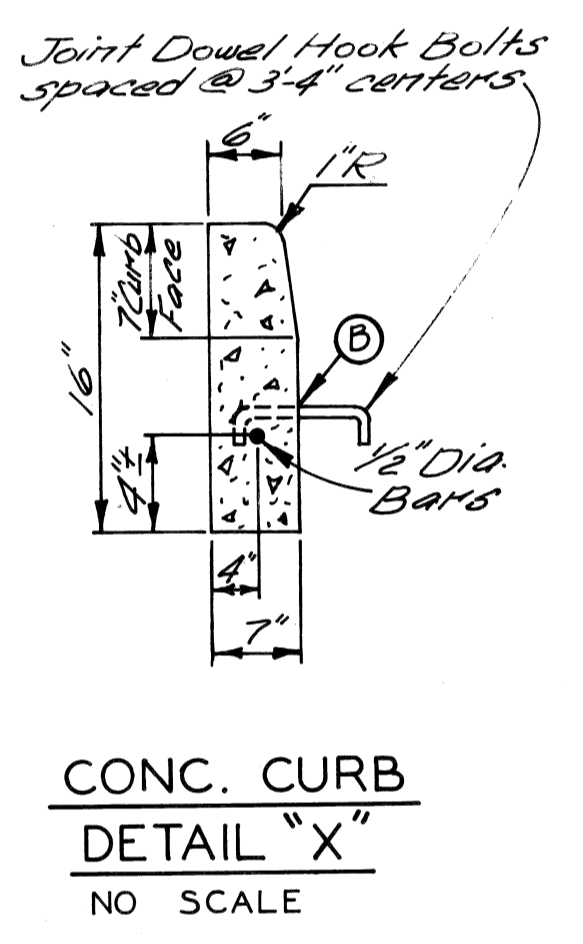
TYPICAL CROSS-SECTION OF ROSA PARKS BLVD. WIDENING  
FORT ST. TO HOWARD ST.  
NO SCALE

\* Sidewalk slopes are to be 3/4" unless the engineer determines that a minimum slope of 1/4" or a maximum slope of 3/4" must be used to meet existing conditions.

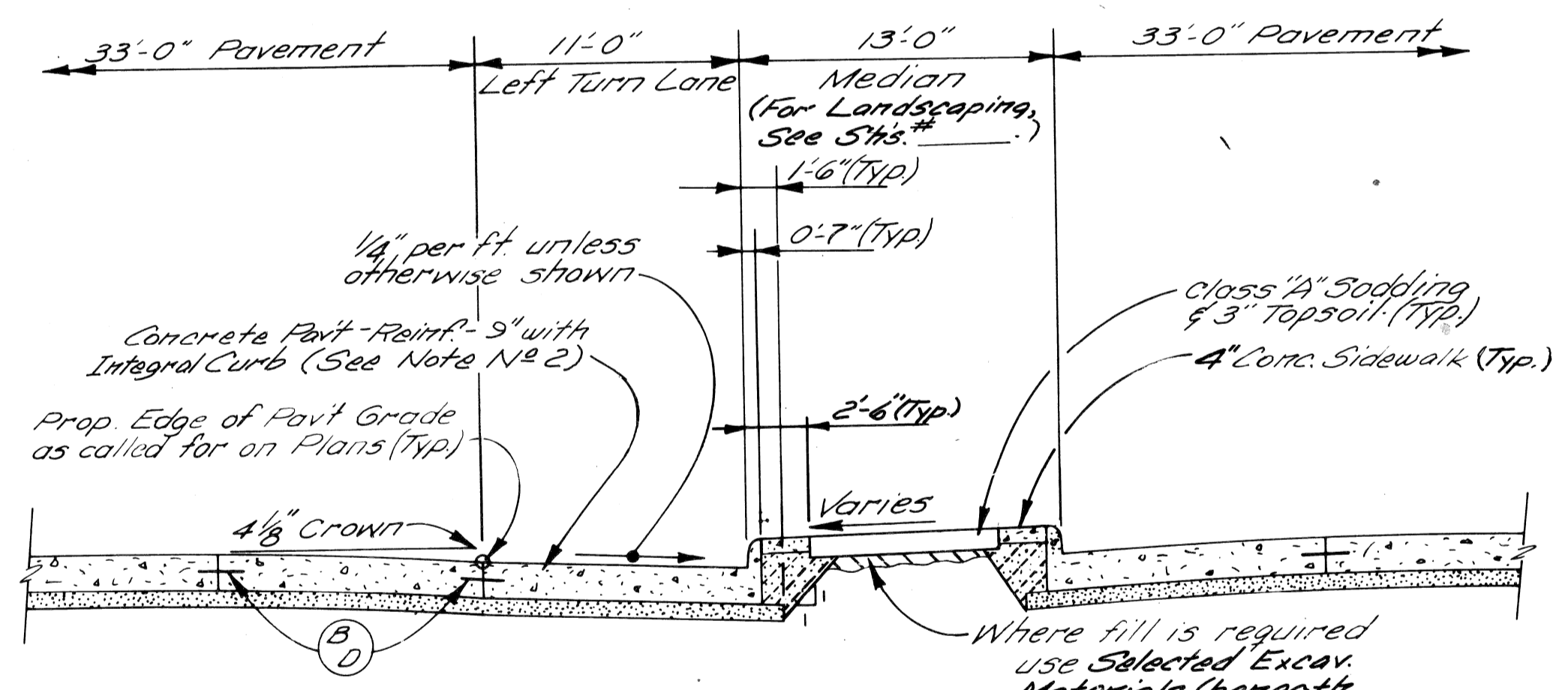


PAV'T WIDTH	CURB HEIGHT	X	T	A	B	C	D	E	F	G
33'	7"	4-1/2"	00	5 1/4"	3 7/8"	3 7/8"	2 7/8"	3 7/8"	3 7/8"	5 1/4"

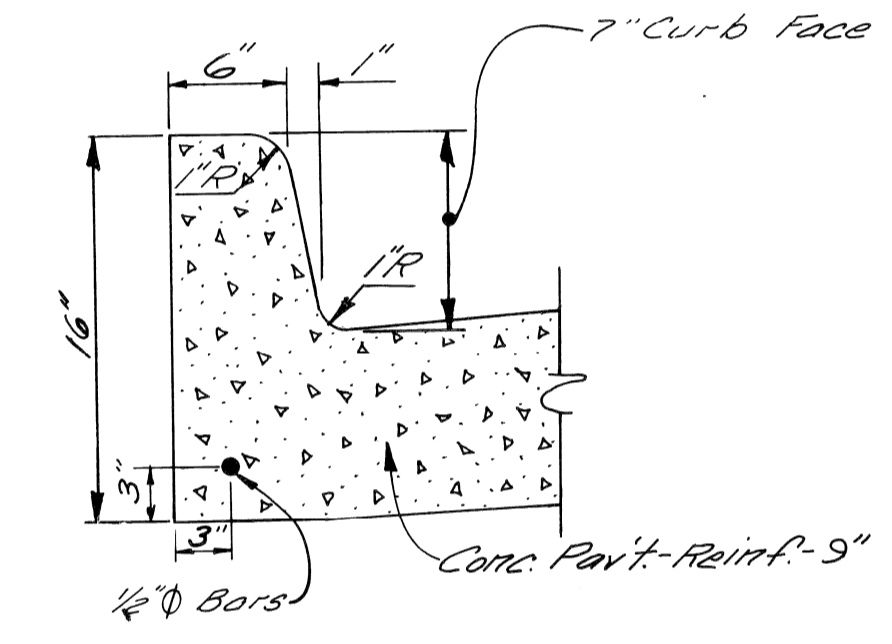
ELEMENTS OF 33' PAVEMENT



CONC. CURB  
DETAIL "X"  
NO SCALE



TYPICAL CROSS-SECTION OF LEFT TURN LANE  
NO SCALE



INTEGRAL CURB  
NO SCALE

- EARTHWORK LEGEND**
- Granular Mat'l Class III (Incidental to Basement Cleanout)
  - Aggregate Base - Conc. (4" in place)
  - Selected Excavated Materials (Incidental to Paving Costs)
  - Granular Material Class II (Beneath Sidewalks - Incidental)

- JOINT LEGEND**
- Longitudinal Bulkhead Joint according to M.D.S.H. Std. Dwg. II-41B
  - Longitudinal Lane Tie Joint with Tie Bars according to M.D.S.H. Std. Dwg. II-41B
  - Optional, B or D

- NOTES:**
- It is estimated that approximately Cu. Yds. of Subgrade Undercutting Type II will be required for this contract.
  - The proposed curb shall be Integral Curb (See Detail this sheet) with Conc. Curb Detail "X" as an alternate.
  - Place 4" Conc. Sidewalk to face of Building where Building fronts on property line.

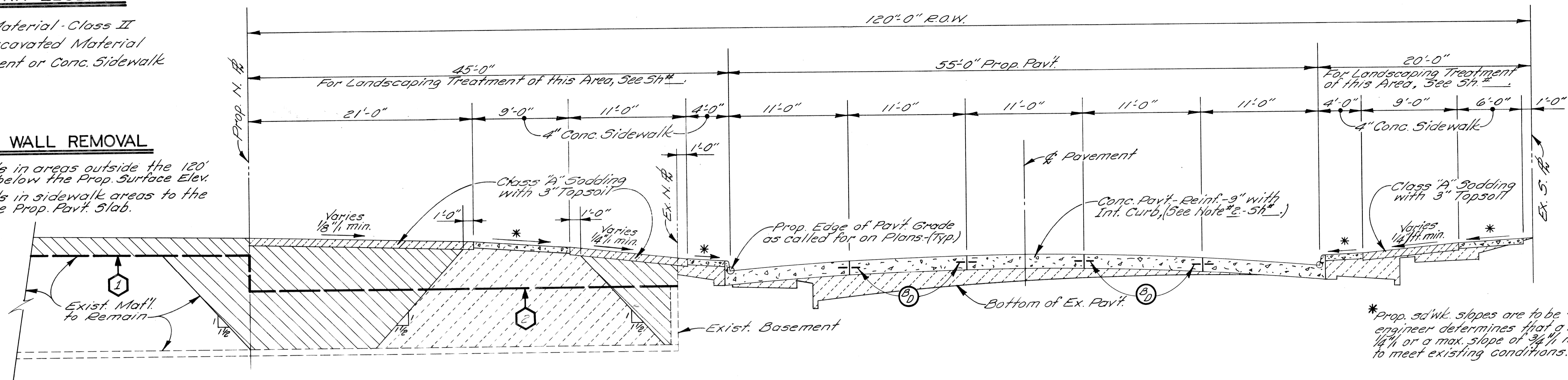
DESIGNED BY		APPROVED: <i>W. P. ...</i> ENGINEER OF EXPRESSWAYS		CITY OF DETROIT		ROSA PARKS BLVD. - LA FAYETTE AVE. RECONSTRUCTION		SHEET 2 OF 12 SHEETS	
DRAWN BY J. R. D.				CITY ENGINEERING DIVISION				CONTRACT No.	
CHECKED BY				E. P. M. D.				ASSIGNMENT No.	
FINAL REVIEW								DATE	
TYPICAL CROSS-SECTIONS - ROSA PARKS BLVD.									

**EARTHWORK LEGEND**

- Granular Material - Class II
- Selected Excavated Material
- Conc. Pavement or Conc. Sidewalk

**BASEMENT WALL REMOVAL**

- ① Remove walls in areas outside the 120' R.O.W. to 1'-0" below the Prop. Surface Elev.
- ② Remove walls in sidewalk areas to the bottom of the Prop. Pavt. Slab.

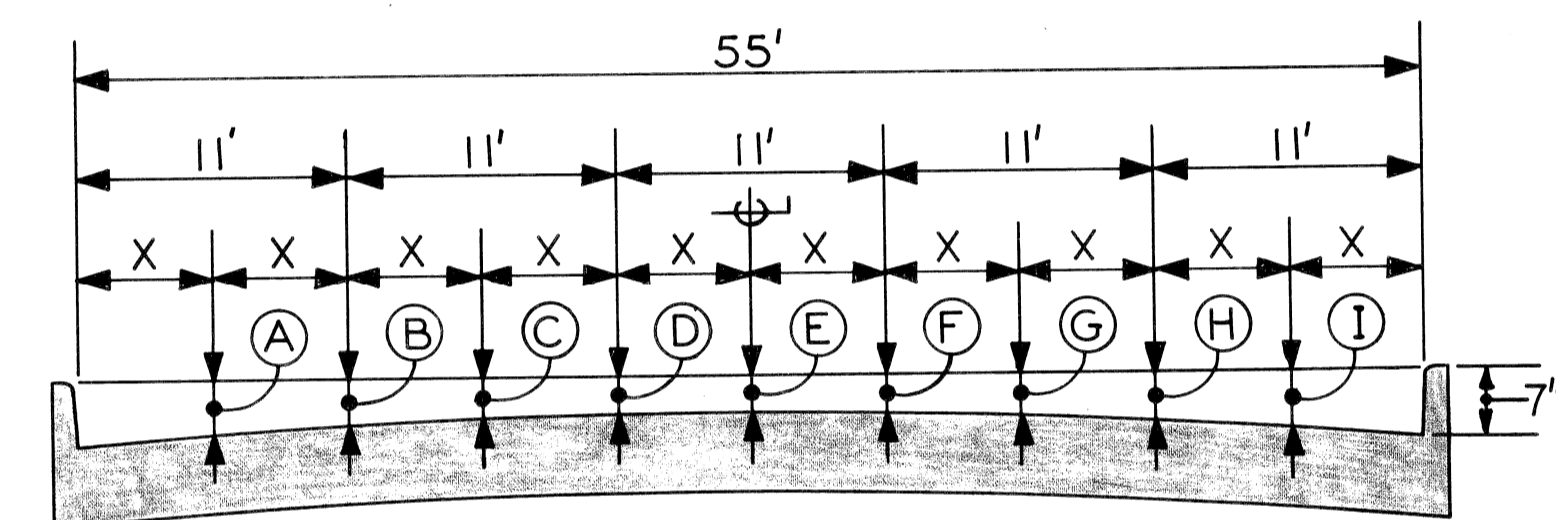


\* Prop. sidewalk slopes are to be 3/8", unless the engineer determines that a min. slope of 1/4" or a max. slope of 3/4" must be used to meet existing conditions.

**TYPICAL CROSS-SECTION - LAFAYETTE AVE. RECONSTRUCTION**

STATION 22+00 TO STATION 31+00

NO SCALE



PAV'T WIDTH	CURB HEIGHT	X	A	B	C	D	E	F	G	H	I
55'	7"	5.5'	5"	3 1/2"	2 3/8"	1 3/4"	1 1/2"	1 3/4"	2 3/8"	3 1/2"	5"

**ELEMENTS OF 55' PAVEMENT**

NO SCALE

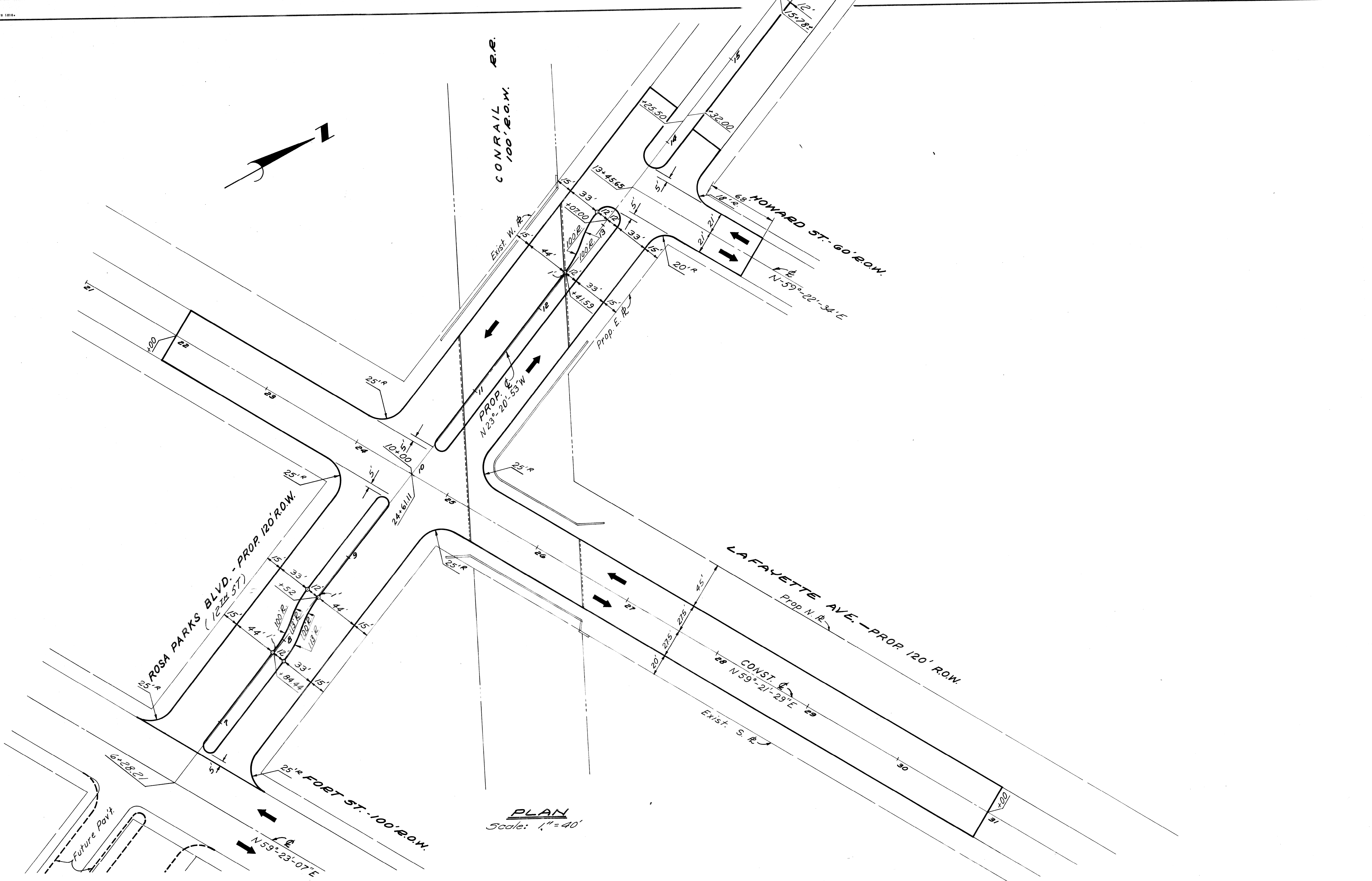
**JOINT LEGEND**

- ⓑ or ⓓ Longitudinal Bulkhead Construction Joint according to M.D.S.H. Std. Dwg. II-41-B
- ⓐ Optional, B or D

**GENERAL NOTES**

1. For Miscellaneous Quantities, See Sh. N<sup>o</sup>.

<p>REVISIONS LOCATED BY COORDINATES ON SHEET</p>		<p>DESIGNED BY</p>	<p>APPROVED:</p>	<p>CITY OF DETROIT CITY ENGINEERING DIVISION - EPMD BUREAUS OF STREETS AND HIGHWAYS</p>	<p>ROSA PARKS BLVD. - LAFAYETTE AVE. RECONSTRUCTION</p>	<p>SHEET 3 OF 12 SHEETS</p>
		<p>DRAWN BY <i>MJP</i></p>	<p>ENGINEER OF STREETS</p>			<p>CONTRACT NO.</p>
		<p>TRACED BY</p>	<p>HIGHWAY ENGINEER</p>			<p>ASSIGNMENT NO.</p>
		<p>CHECKED BY</p>				<p>DATE</p>



COORD	DESCRIPTION	DRN	CK'D	AP'D	DATE

REFERENCE DRAWINGS

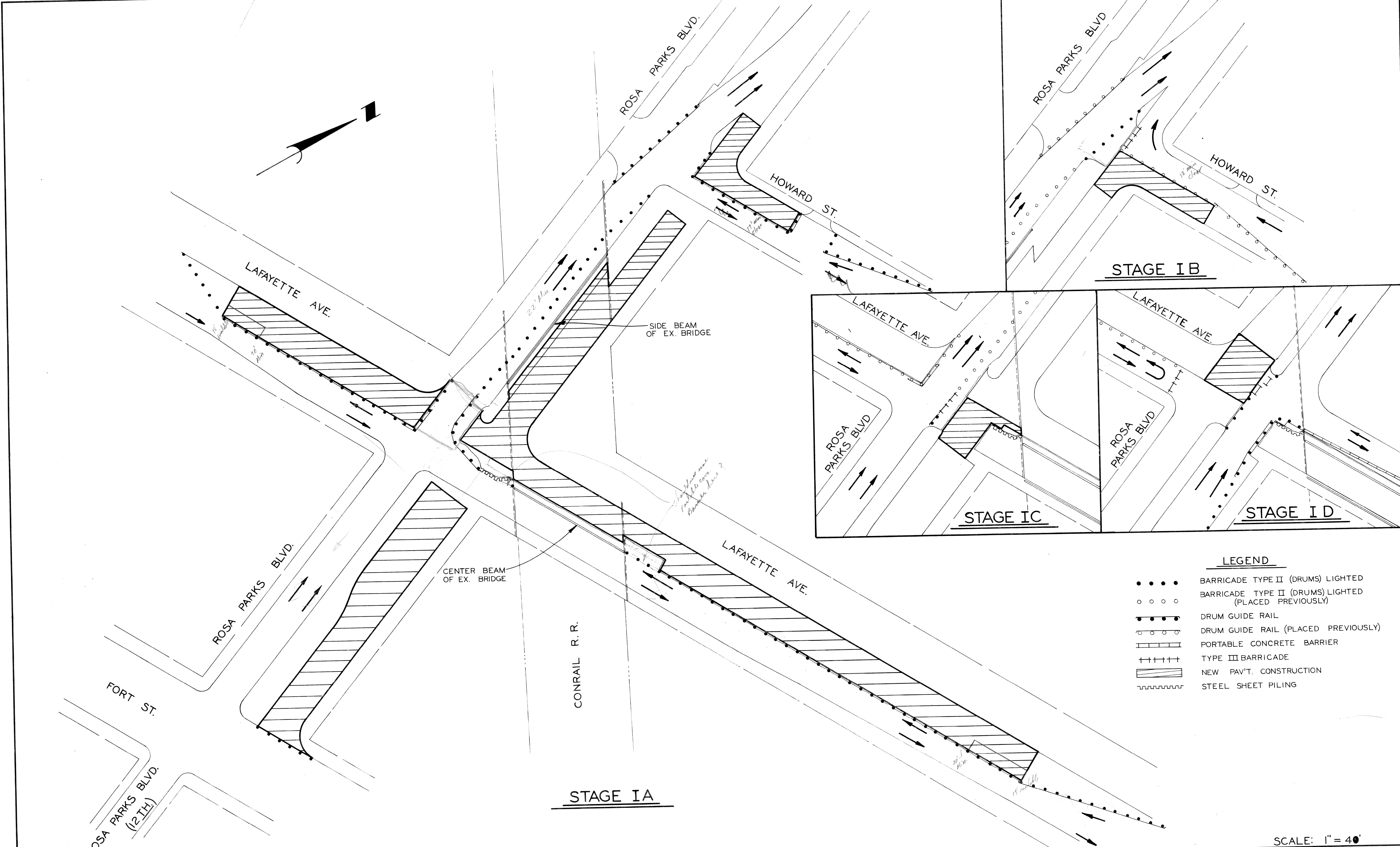
DESIGNED BY	
DRAWN BY	
TRACED BY	
CHECKED BY	Comly

APPROVED:	
ENGINEER OF STREETS	
HIGHWAY ENGINEER	

**CITY OF DETROIT**  
 CITY ENGINEERING DIVISION - EPMD  
 BUREAUS OF STREETS AND HIGHWAYS

**ROSA PARKS BLVD. - LAFAYETTE AVE.**  
**RECONSTRUCTION**  
**ALIGNMENT**

SHEET 4 OF 12 SHEETS
CONTRACT NO.
ASSIGNMENT NO.
DATE



**LEGEND**

- ● ● ● BARRICADE TYPE II (DRUMS) LIGHTED
- ○ ○ ○ BARRICADE TYPE II (DRUMS) LIGHTED (PLACED PREVIOUSLY)
- DRUM GUIDE RAIL
- DRUM GUIDE RAIL (PLACED PREVIOUSLY)
- ▬▬▬▬ PORTABLE CONCRETE BARRIER
- +++++ TYPE III BARRICADE
- ▨▨▨▨ NEW PAV'T. CONSTRUCTION
- ~~~~~ STEEL SHEET PILING

SCALE: 1" = 40'

COORD.	DESCRIPTION	OWN	CHK'D	APVD	DATE

REVISIONS LOCATED BY COORDINATES ON SHEET

DESIGNED BY	
DRAWN BY	
TRACED BY	
CHECKED BY	

APPROVED:

ENGINEER OF STREETS

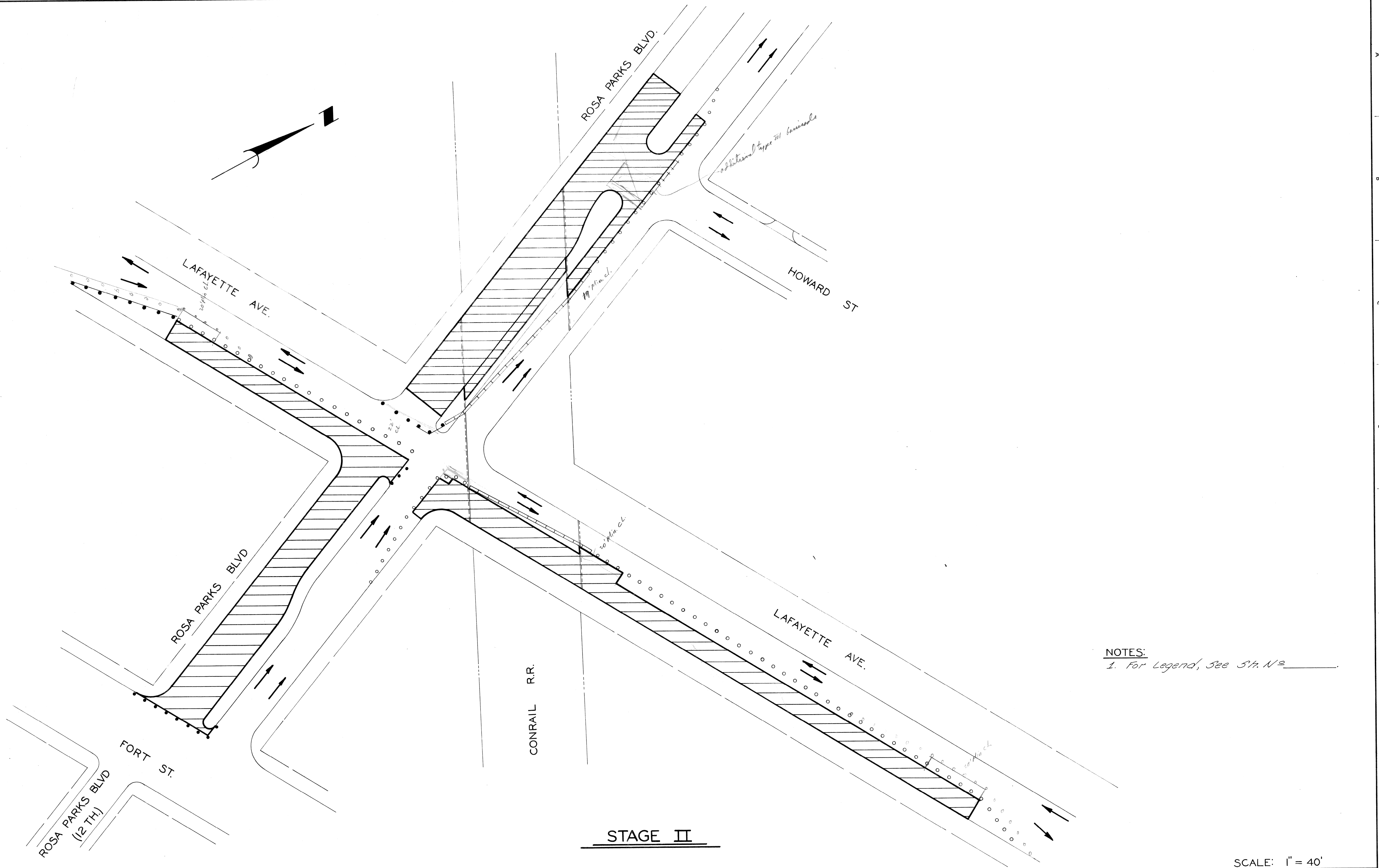
HIGHWAY ENGINEER

CITY OF DETROIT  
CITY ENGINEERING DIVISION - EPMD  
BUREAUS OF STREETS AND HIGHWAYS

ROSA PARKS BLVD. - LAFAYETTE AVE.  
RECONSTRUCTION

CONSTRUCTION SEQUENCE

SHEET 5 OF 26 SHEETS
CONTRACT NO.
ASSIGNMENT NO.
DATE








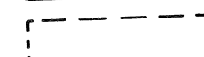
NOTES:  
 1. For Legend, See Sht. No. 1

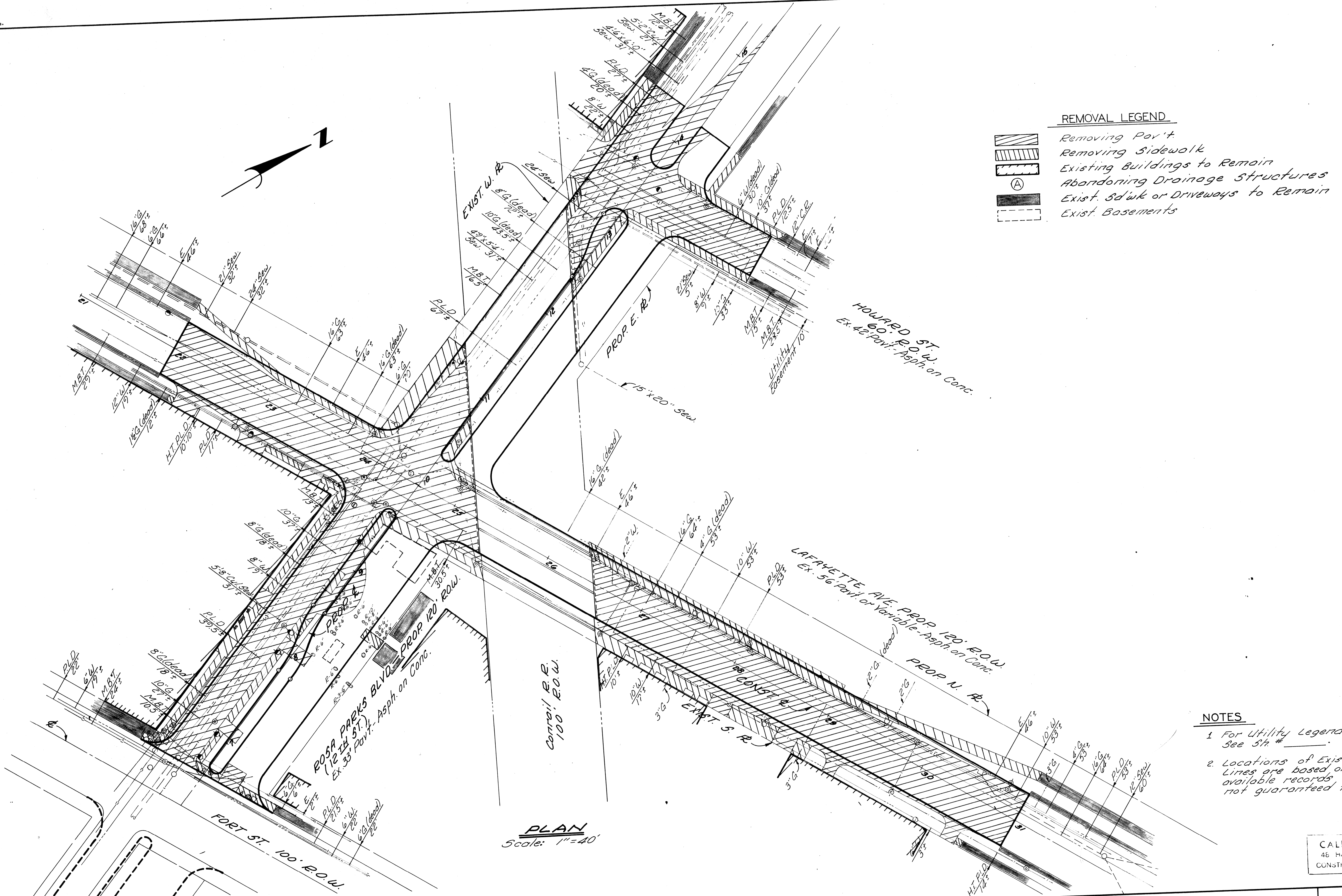
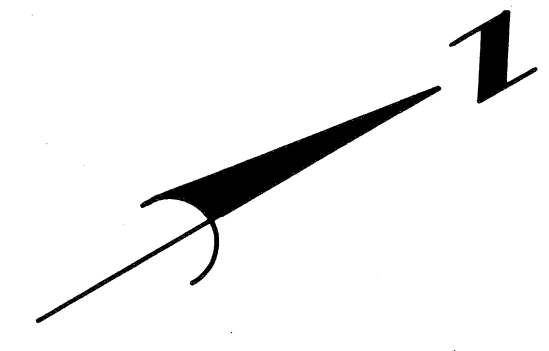
**STAGE II**

SCALE: 1" = 40'

<table border="1"> <tr> <td>REF. NO.</td> <td>DATE</td> <td>DESCRIPTION</td> <td>BY</td> </tr> <tr> <td> </td> <td> </td> <td> </td> <td> </td> </tr> <tr> <td> </td> <td> </td> <td> </td> <td> </td> </tr> <tr> <td> </td> <td> </td> <td> </td> <td> </td> </tr> <tr> <td> </td> <td> </td> <td> </td> <td> </td> </tr> </table>				REF. NO.	DATE	DESCRIPTION	BY																	DESIGNED BY DRAWN BY TRACED BY CHECKED BY	APPROVED: _____ ENGINEER OF STREETS _____ HIGHWAY ENGINEER	CITY OF DETROIT CITY ENGINEERING DIVISION - EPMD BUREAUS OF STREETS AND HIGHWAYS	ROSA PARKS BLVD. - LAFAYETTE AVE. RECONSTRUCTION CONSTRUCTION SEQUENCE	SHEET 6 OF 12 SHEETS CONTRACT NO. ASSIGNMENT NO. DATE
REF. NO.	DATE	DESCRIPTION	BY																									

**REMOVAL LEGEND**

-  Removing Pav't
-  Removing Sidewalk
-  Existing Buildings to Remain
-  Abandoning Drainage Structures
-  Exist. Sd'wk or Driveways to Remain
-  Exist. Basements



**NOTES**

1. For Utility Legend & Symbols, See Sh. #
2. Locations of Existing Utility Lines are based on the best available records and are not guaranteed for accuracy.

CALL MISS DIG  
48 HOURS PRIOR TO  
CONSTRUCTION 647-7344

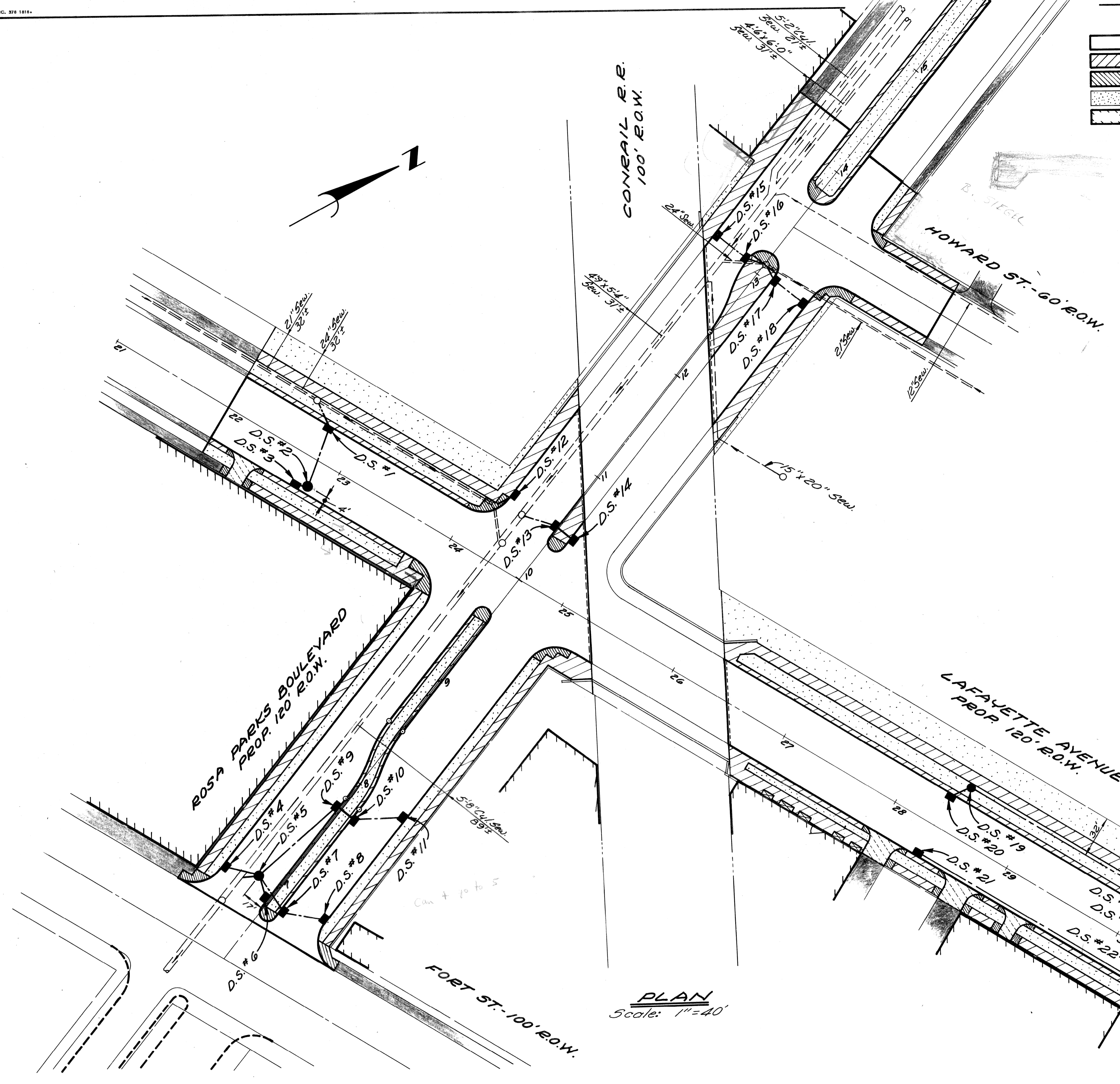
CITY OF DETROIT CITY ENGINEERING DIVISION - EPMD BUREAU OF STREETS AND HIGHWAYS		ROSA PARKS BLVD. - LAFAYETTE AVE. RECONSTRUCTION REMOVALS		SHEET 7 OF 12 SHEETS
APPROVED:		CONTRACT NO.		ASSIGNMENT NO.
DESIGNED BY	ENGINEER OF STREETS	DATE		
DRAWN BY	HIGHWAY ENGINEER			
TRACED BY				
CHECKED BY				
COORD	DESCRIPTION	DRN	CK'D	APVD
REVISIONS LOCATED BY COORDINATES ON SHEET				

**SURFACING LEGEND**

- 
- 
- 
- 
- 
- 
- 
- 
- 
- 

DRAINAGE STRUCTURE NO. (D.S.)	TYPE OF STRUCT.	WITH TRAP (T)	SEWER LENGTH & TYPE LEAVING (D.S.)			SEWER TAP SIZE (IN.)	TRENCH DETAIL (L.F.)		COMMENTS
			LENGTH (FT.)	SIZE (IN.)	CLASS		8	9	
1	C.B. "B"	T	24	12	C-76-III	12	24	Structure to be built directly over Exist. D.E.	
2	C.B. "B"		51	12	C-76-III		51	Use M.H. Cover (Incid.)	
3*	C.B. "A"		6	12	C-76-III		6	Structure to be built directly over Exist. Water	
4	C.B. "B"	T	28	12	C-76-III		28		
5	Drop M.H.		13	15	C-76-IV	15	13		
6	C.B. "B"	T	19	12	C-76-III		19		
7	C.B. "B"	T	34	12	C-76-III		16	18	
8	C.B. "A"		35	12	C-76-III		35		
9	C.B. "B"	T	82	12	C-76-III		82		
10	C.B. "B"		16	12	C-76-III		16		
11	C.B. "A"		40	12	C-76-III		40		
12	C.B. "B"	T	19	12	C-76-III	12	19		
13	C.B. "B"	T	28	12	C-76-III	12	28		
14	C.B. "A"		16	12	C-76-III		16		
15	C.B. "A"		31	12	C-76-III		31		
16	C.B. "B"	T	16	12	C-76-III	12	16		
17	C.B. "B"	T	13	12	C-76-III	12	13		
18	C.B. "A"		31	12	C-76-III		31		
19	C.B. "B"	T	190	12	C-76-III		190	Use M.H. Cover (Incid.)	
20*	C.B. "A"		17	12	C-76-III		17	Structure to be built directly over Exist. D.E.	
21	C.B. "A"		190	12	C-76-III		190		
22	C.B. "B"	T	68	12	C-76-III		13	55	
23*	C.B. "A"		17	12	C-76-III		17	Structure to be built directly over Exist. D.E.	
24	C.B. "B"	T	155	15	C-76-III	15	155	Use M.H. Cover (Incid.)	
25	C.B. "B"	T						Use M.H. Cover (Incid.)	

\* If interference with the existing utility is encountered, a C.B. "L" may be substituted.



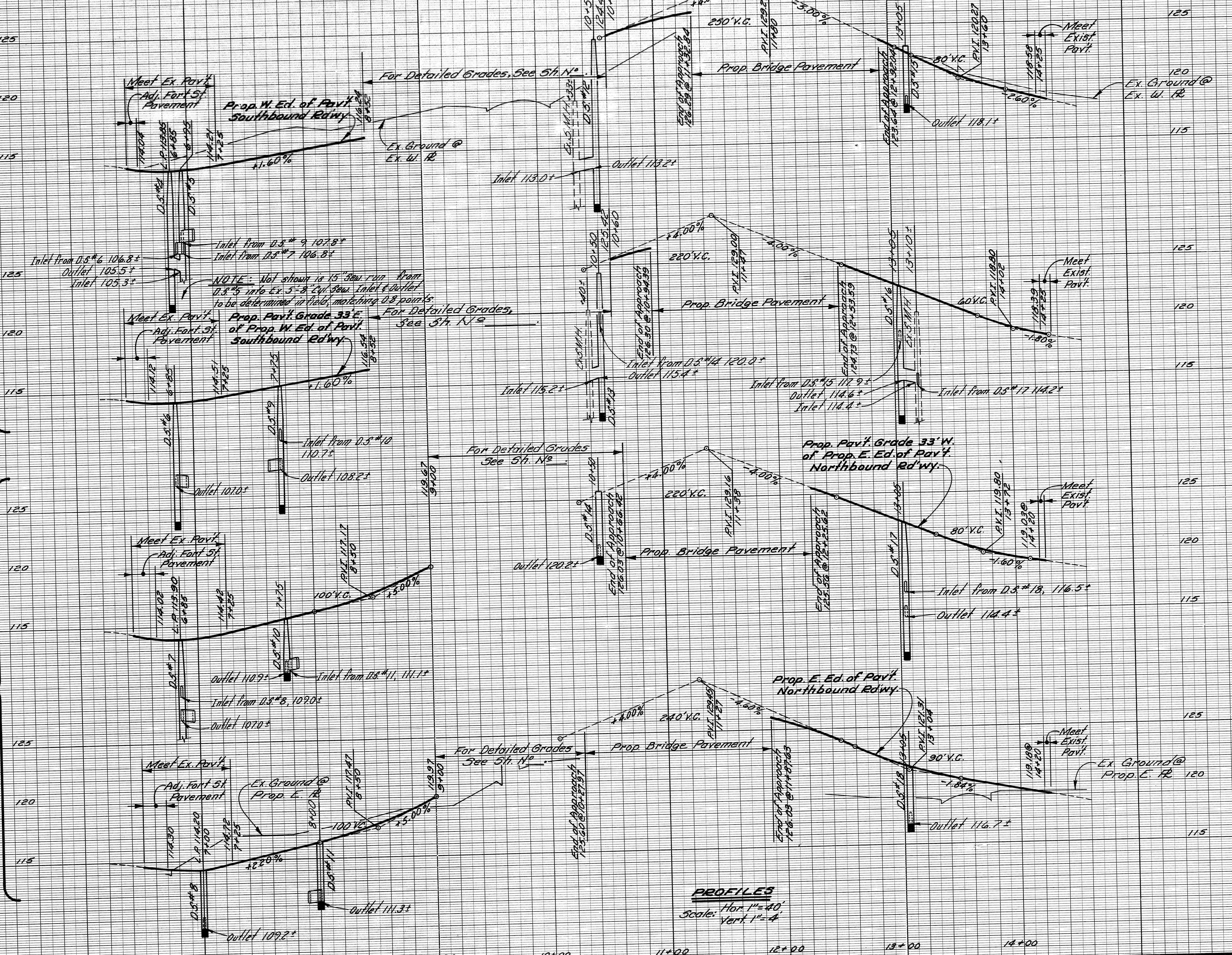
**PLAN**  
Scale: 1"=40'

<table border="1" style="width: 100%; border-collapse: collapse;"> <tr><td>COORD</td><td>DESCRIPTION</td><td>DRN</td><td>CK'D</td><td>AP'VD</td><td>DATE</td></tr> <tr><td> </td><td> </td><td> </td><td> </td><td> </td><td> </td></tr> </table>	COORD	DESCRIPTION	DRN	CK'D	AP'VD	DATE							REFERENCE DRAWINGS DESIGNED BY DRAWN BY <i>WAP</i> TRACED BY CHECKED BY	APPROVED: _____ ENGINEER OF STREETS _____ HIGHWAY ENGINEER	CITY OF DETROIT CITY ENGINEERING DIVISION - EPMD BUREAUS OF STREETS AND HIGHWAYS	ROSA PARKS BLVD. - LAFAYETTE AVE. RECONSTRUCTION PLAN	SHEET <u>8</u> OF 12 SHEETS CONTRACT NO. ASSIGNMENT NO. DATE
COORD	DESCRIPTION	DRN	CK'D	AP'VD	DATE												



ROSA PARKS BLVD. - SOUTHBOUND RDWY.

ROSA PARKS BLVD. - NORTHBOUND RDWY.



FINAL R.O.W.

6+00

7+00

8+00

9+00

10+00

11+00

12+00

13+00

14+00

REVISIONS DR'N CK'D CK'D BY

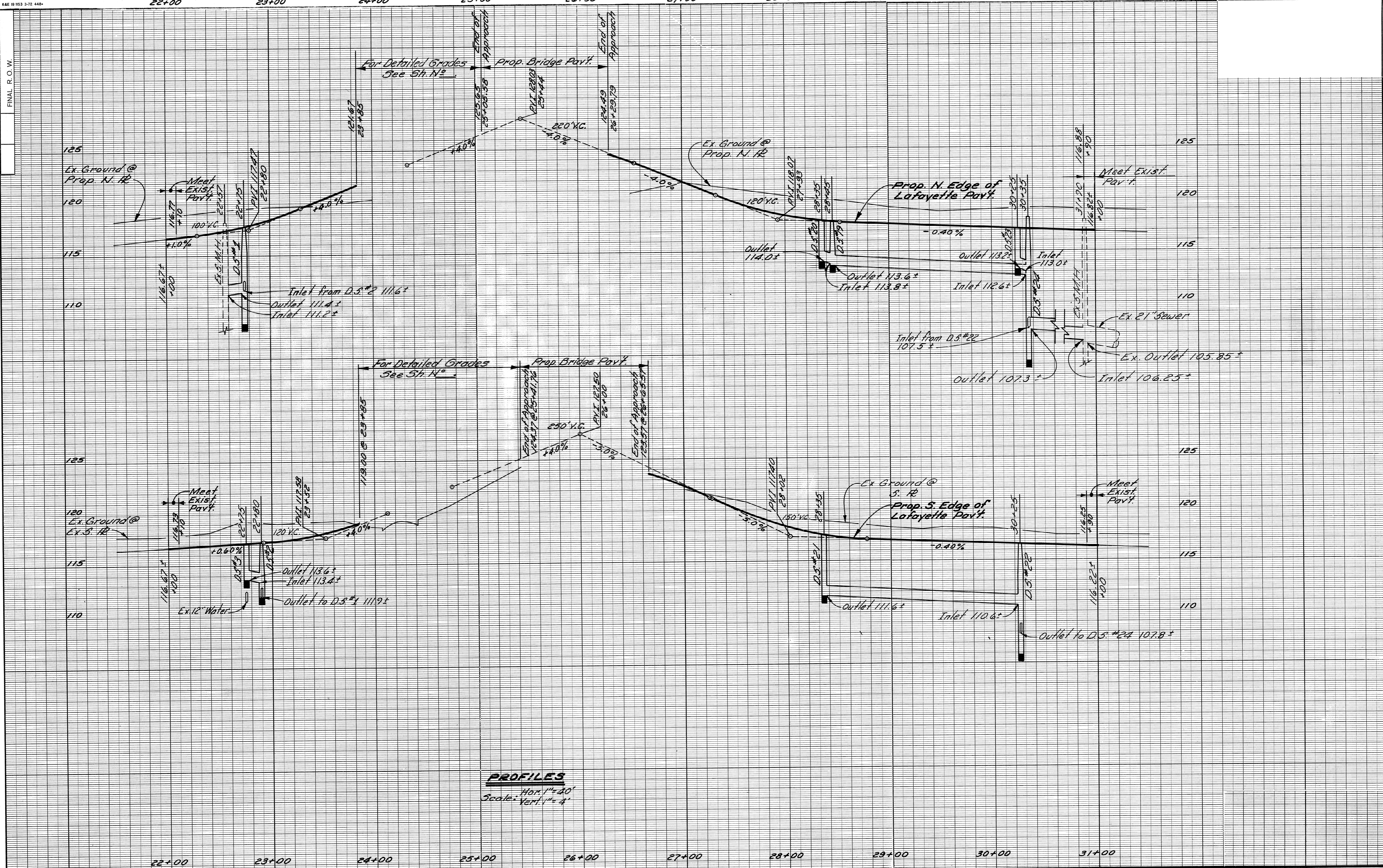
DRWN BY *WMB*

APPROVED  
ENGINEER OF EXPRESSWAYS

CITY OF DETROIT  
CITY ENGINEERING DIVISION  
E.P.M.D.

ROSA PARKS BLVD. - LAFAYETTE AVE.  
RECONSTRUCTION  
PROFILES - ROSA PARKS BLVD.

SHEET 9 OF 12 SHEETS  
CONTRACT NO.  
DATE



REVISION'S DR'N CK'D CK'D BY		DRWN BY <i>MAP</i> APPROVED ENGINEER OF EXPRESSWAYS	CITY OF DETROIT CITY ENGINEERING DIVISION E.P.M.D.	ROSA PARKS BLVD - LAFAYETTE AVE. RECONSTRUCTION PROFILES - LAFAYETTE AVE.	SHEET 10 OF 12 SHEETS CONTRACT NO. DATE
---------------------------------	--	---	--	---	---

REVISIONS	
NO.	DESCRIPTION

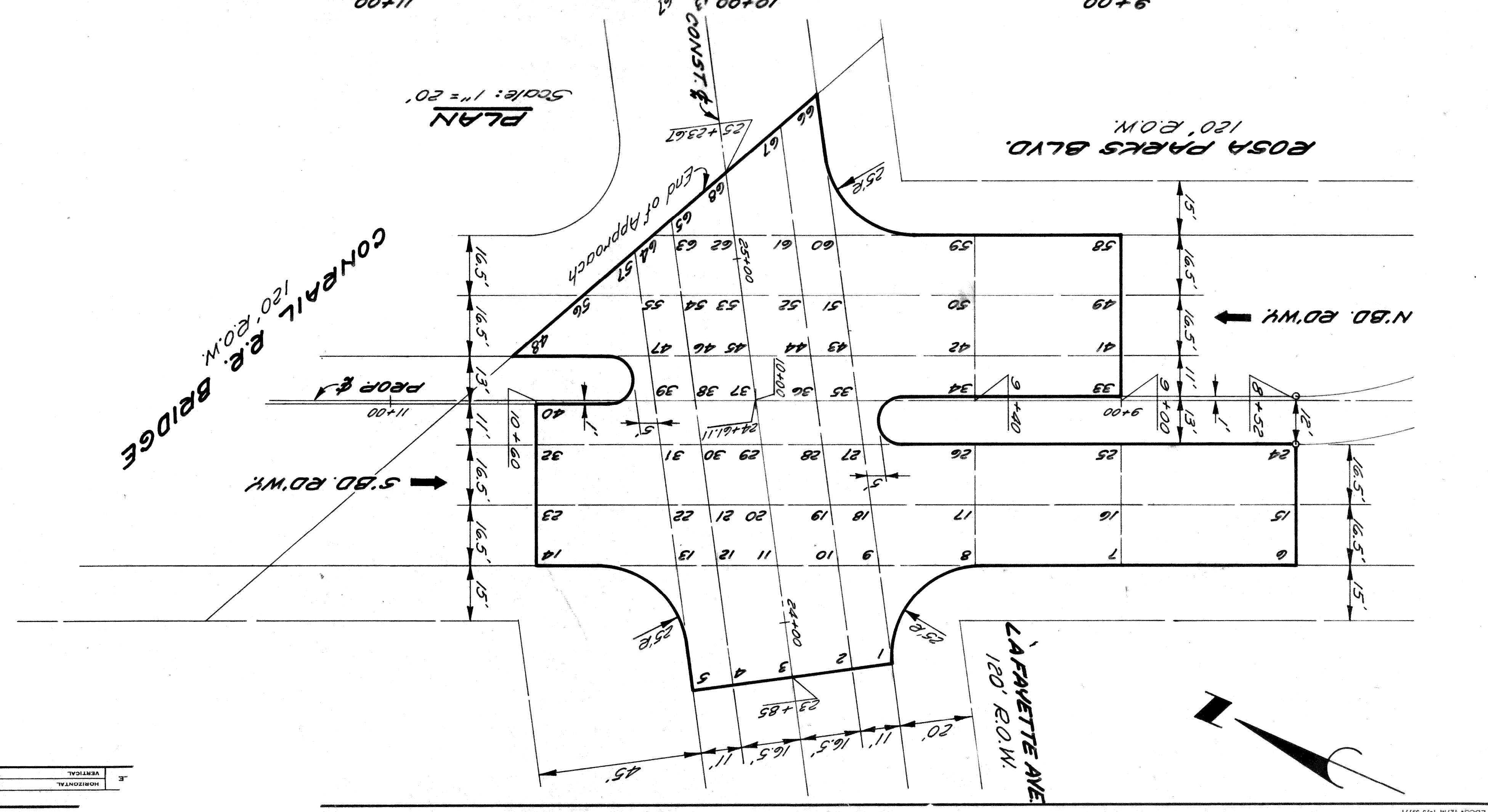
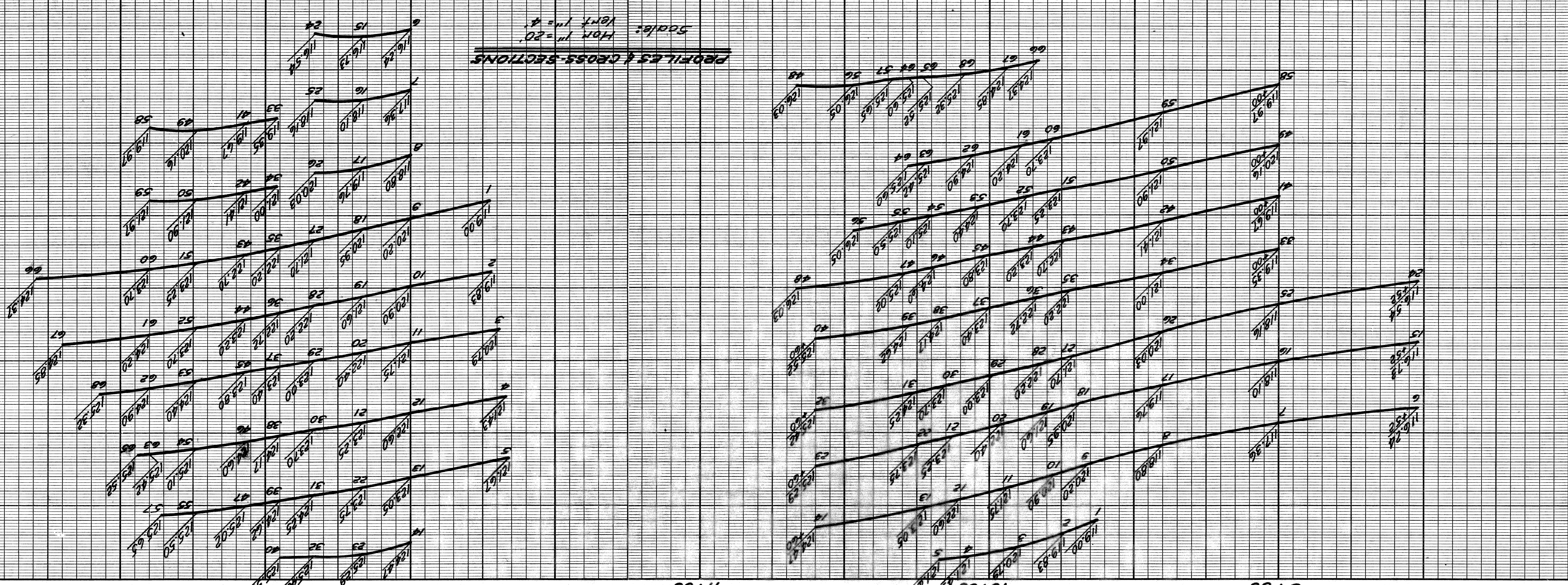
PLAN	CHECKED BY	DATE
GRADE		
ESTIMATE		
FINAL		

APPROVED BY	
ENGINEER OF STREETS	
HIGHWAY ENGINEER	

CITY OF DETROIT  
 ENGINEERING DEPARTMENT  
 BUREAUS OF STREETS AND HIGHWAYS  
 FOR

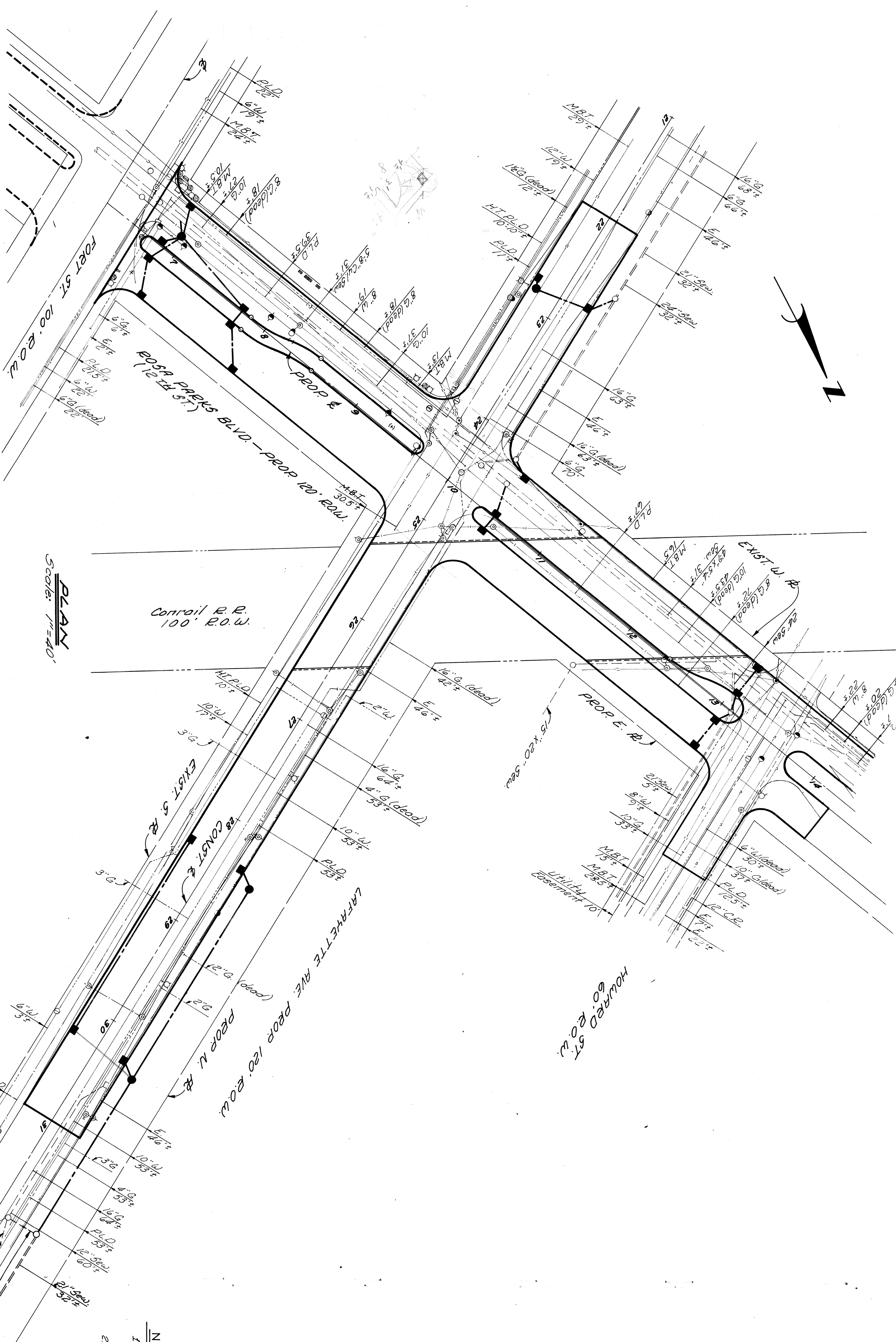
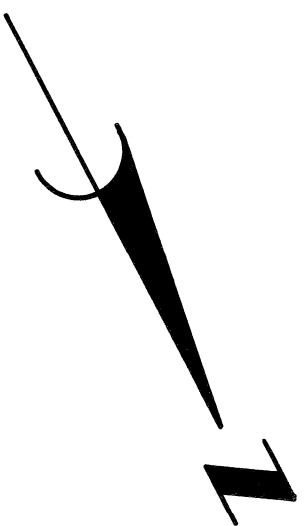
ROSA PARKS BLVD-LAFAYETTE AVE.  
 RECONSTRUCTION  
 DETAILED GRADES FOR ROSA PARKS BLVD AT LAFAYETTE

INDEXED	DATE
ASSIGNMENT	
CONTRACT	
SHEET 11 OF 12 SHEETS	



BOOK	
LEVEL	
DATE	
NO.	
PG.	

NOTE - FOR SYMBOLS, ETC. SEE STANDARD DETAIL DRAWING NO. C-173  
 MUST CHECK WITH UTILITIES FOR LOCATIONS OF EXISTING STRUCTURES WHETHER OR NOT INDICATED ON PLAN.  
 BEFORE STARTING CONSTRUCTION.  
 CONTRACTOR  
 MARKS  
 BENCH  
 ELEV.



PLAN  
Scale: 1"=40'

NOTES  
1 For Utility Legend & Symbols, See 5th #  
2 Locations of Existing UT Lines are based on the available records or not quarantined for

DESIGNED BY		DRAWINGS	
DRAWN BY		REFERENCE	
CHECKED BY		DESIGNED BY	
APPROVED:		DRAWN BY	
CITY OF DETROIT		CHECKED BY	
ENGINEERING DIVISION - EPMD		APPROVED:	
BUREAU OF STREETS AND HIGHWAYS		ENGINEER OF STREETS	
ROSA PARKS BLVD. - LAFAYE		HIGHWAY ENGINEER	
RECONSTRUCTION		DESCRIPTION	
UTILITIE		BRN CRD LAFAYE	
		REVISIONS LOCATED BY COORDINATES ON SHEET	