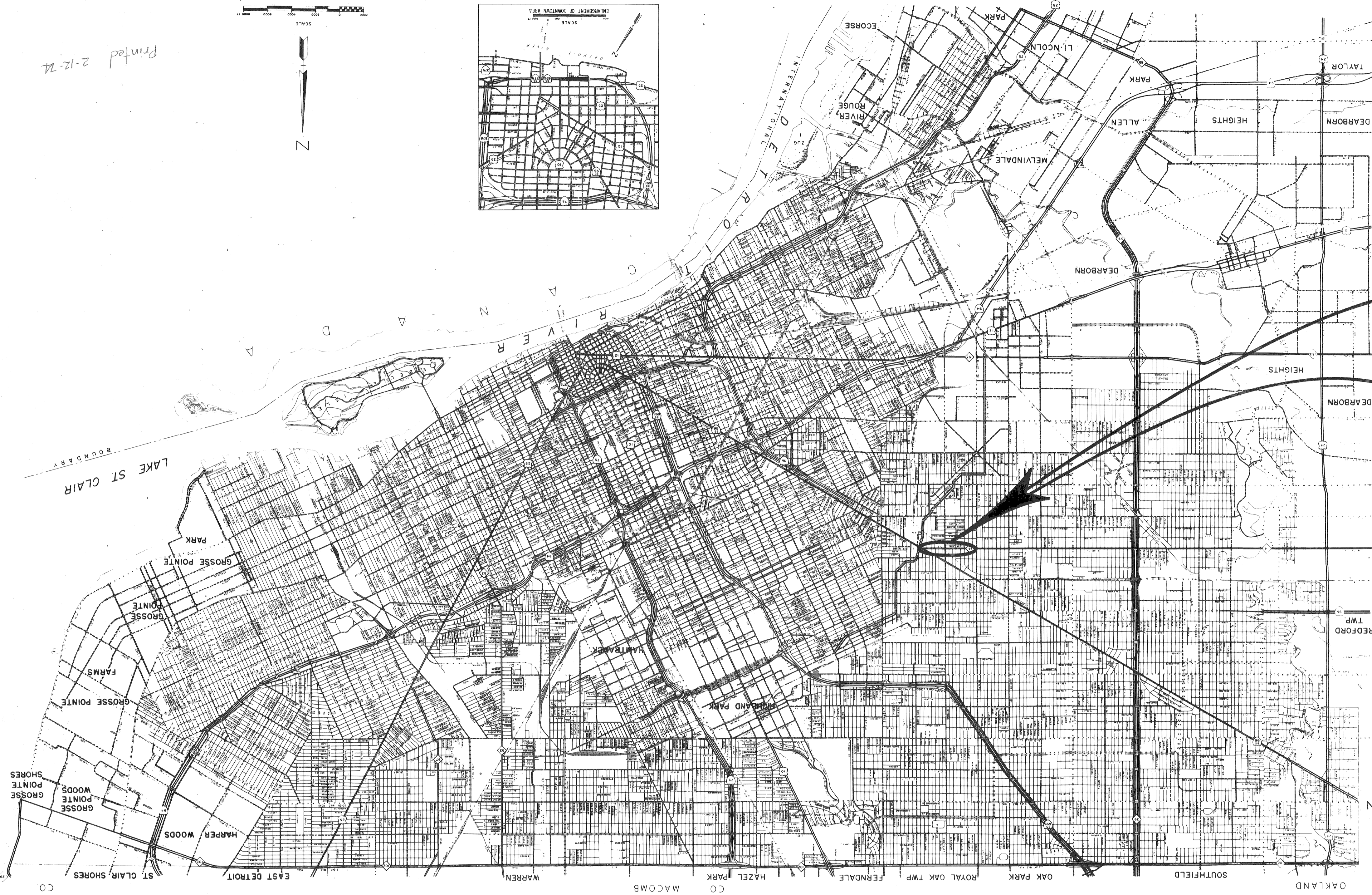


THE IMPROVEMENTS COVERED BY THESE PLANS SHALL BE DONE IN ACCORDANCE WITH THE MICHIGAN DEPARTMENT OF STATE HIGHWAYS CURRENT STANDARD SPECIFICATIONS AND SUPPLEMENTAL SPECIFICATIONS.

CITY OF DETROIT
DEPARTMENT OF PUBLIC WORKS
 IN CO-OPERATION WITH
MICHIGAN DEPARTMENT OF STATE HIGHWAYS

B.P. NO.	STATE	PROJECT NO.	FISCAL YEAR	SHEET NO.	TOTAL SHEETS
4	MICH.				
STREET	CITY	COUNTY	TWP.	SHEET NO.	TOTAL SHEETS
		WAYNE		1	8

CONTROL SECTION Mtb 82101 - JOB NUMBER 05520A



PLYMOUTH AVE.
 TO
 MANOR
 RESURFACING
 TO
 GRAND RIVER

- INDEX OF SHEETS**
- 1 TITLE SHEET
 - 2 TYPICAL CROSS-SECTION AND SPECIAL DETAILS
 - 3-4 RESURFACING PLANS
 - 5 DRAINAGE STRUCTURES
 - 6 SIDEWALK RAMPS
 - 7 UTILITY TRENCHES
 - 8 QUANTITY SHEET
- STANDARD PLANS**
- II - 30 A
 - II - 38 A
 - II - 44 A

CONTRACT FOR RESURFACING

LOCAL AUTHORITY APPROVAL
 CITY OF DETROIT
 DEPARTMENT OF PUBLIC WORKS
 GOVERNMENTAL AGENCY
 RECOMMENDED FOR APPROVAL
 HIGHWAY ENGINEER
 DATE 1-9-74

APPROVED BY
 ASST. CITY ENGINEER
 DATE 1-9-74

APPROVED BY
 CITY ENGINEER
 DATE 1-9-74

APPROVED BY
 DIRECTOR OF DEPT. OF STREETS & TRAFFIC
 DATE

RECOMMENDED FOR APPROVAL
 ENGINEER OF TRAFFIC AND SAFETY
 DATE

BY
 CONSTRUCTION ENGINEER
 DATE

BY
 F.A.S. ENGINEER
 DATE

PLANS CHECKED BY
 DATE

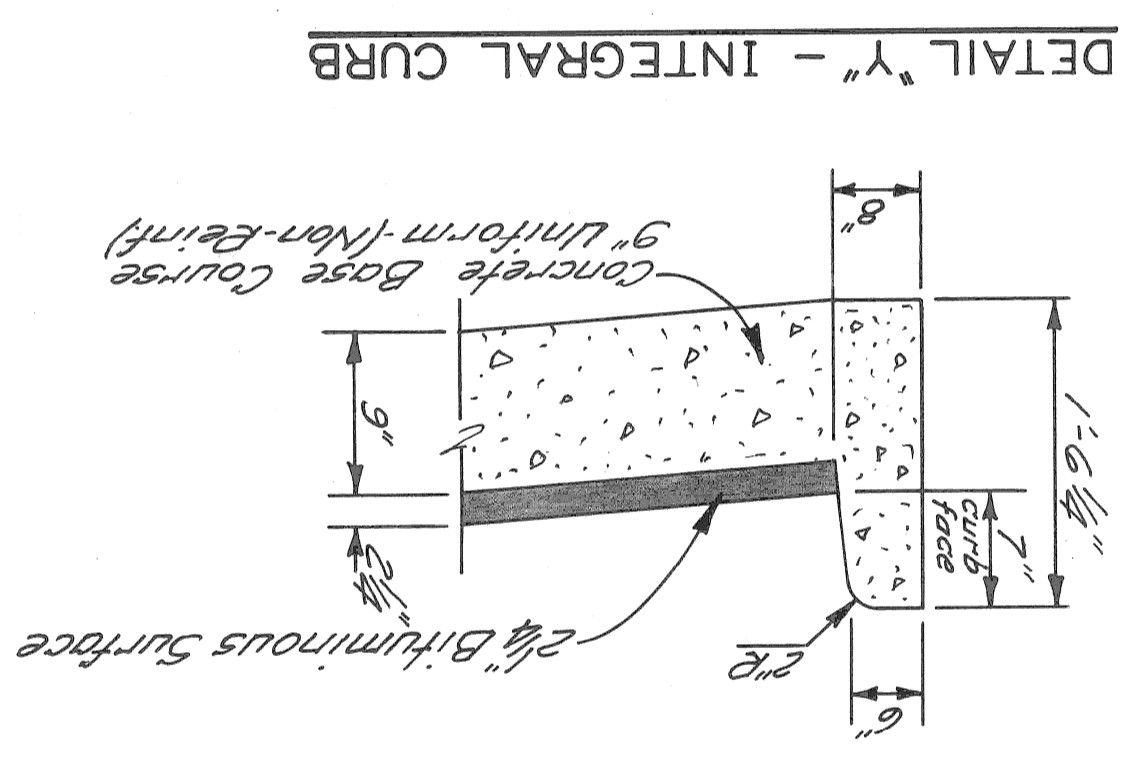
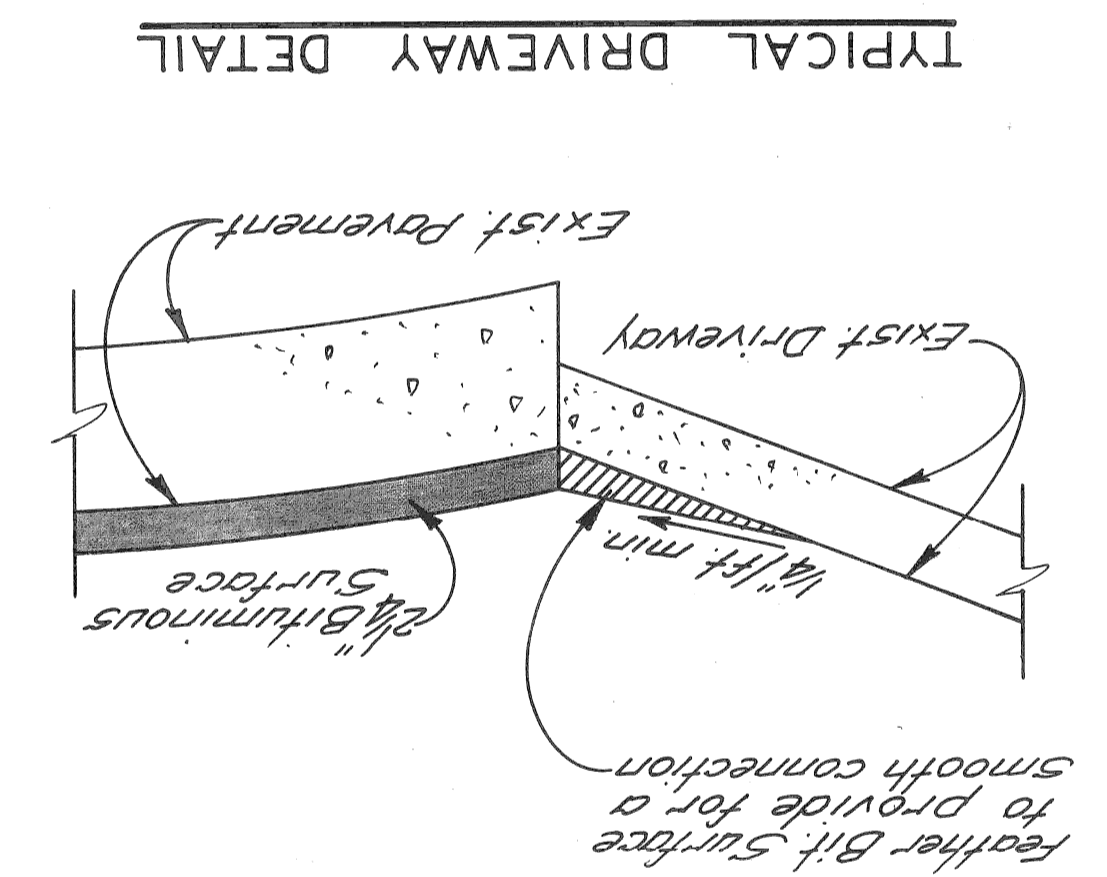
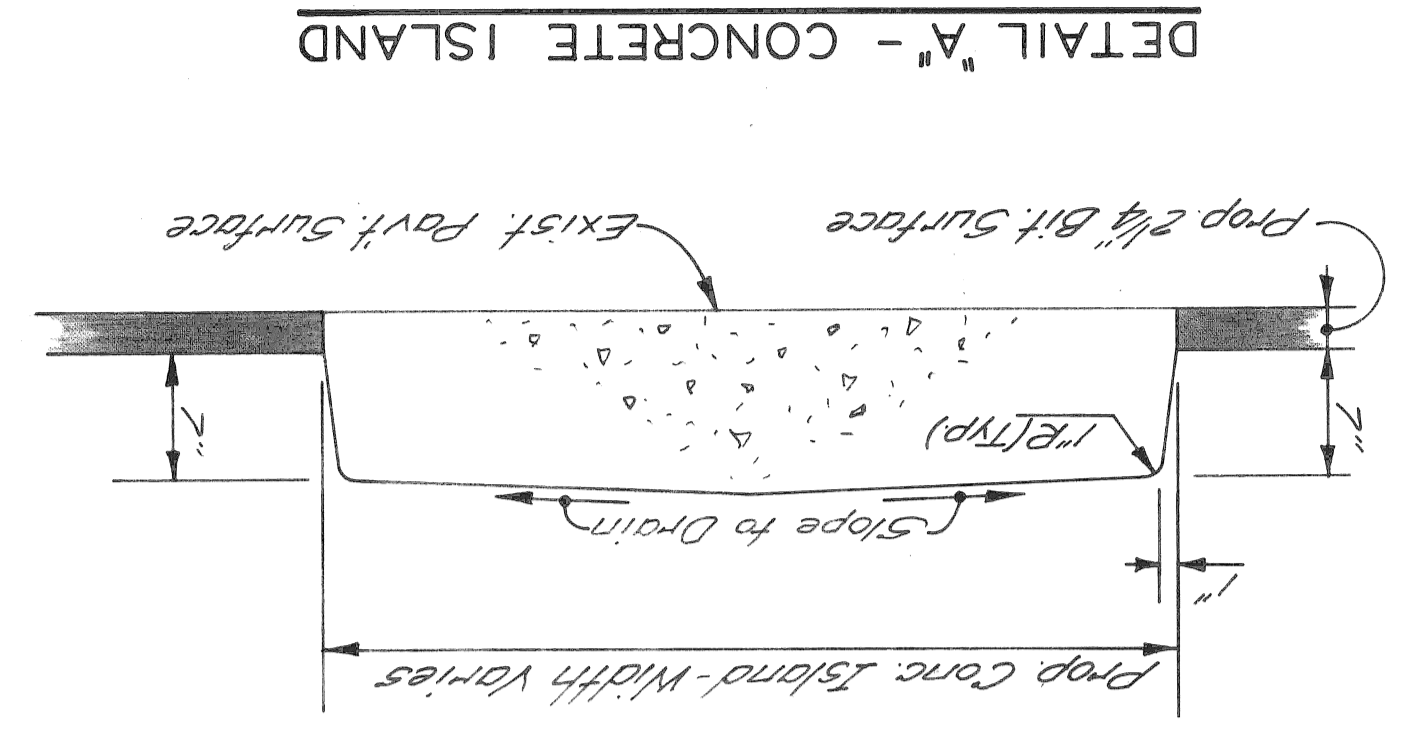
DEPARTMENT OF STATE HIGHWAYS APPROVAL
 APPROVED FOR COMMISSION
 DEPUTY DIRECTOR
 DATE

PREPARED UNDER SUPERVISION OF
 REGISTERED PROFESSIONAL ENGINEER
 CITY OF DETROIT
 ORGANIZATION
 ADDRESS
 DETROIT, MICHIGAN
 U.S. DEPARTMENT OF TRANSPORTATION
 FEDERAL HIGHWAY ADMINISTRATION
 APPROVED
 DISTRICT ENGINEER
 DATE

FILE NO. Mtb 82101
 JOB NUMBER 05520A
 SHEET NO. 1

JOB No 05520A C.S. Mtb 82101

Printed 2-12-74

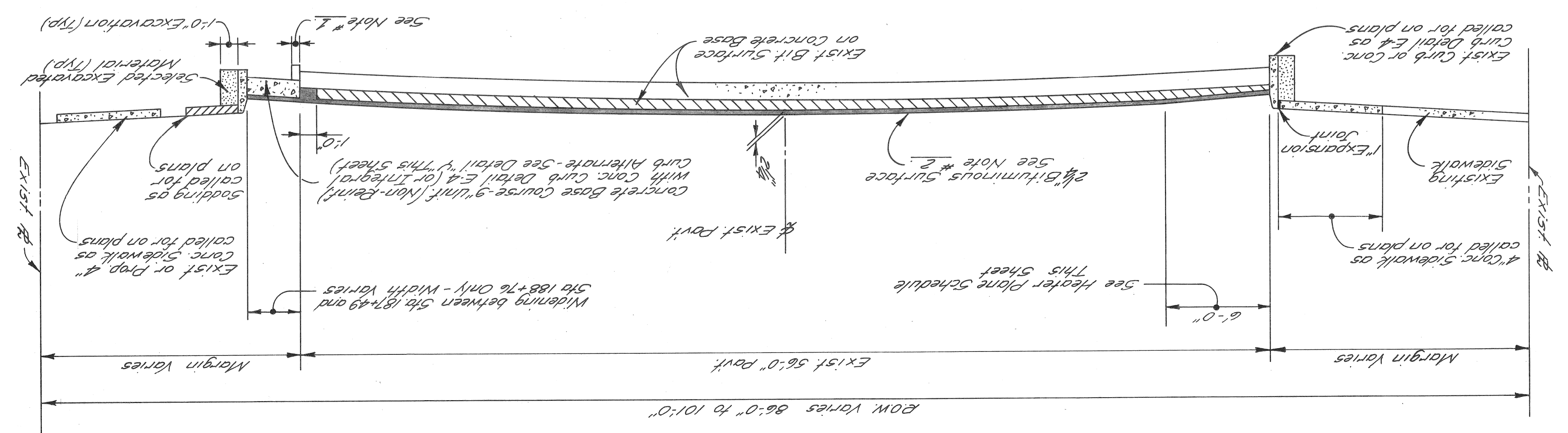


GENERAL NOTES

- Remove or knock down existing curb existing curb a minimum of 2" below proposed pavement. This work will be paid for as "Removing Curb". Use granular Mat'l Class 2 to fill the void below the proposed pavement.
- The Bituminous Surface will consist of the following:

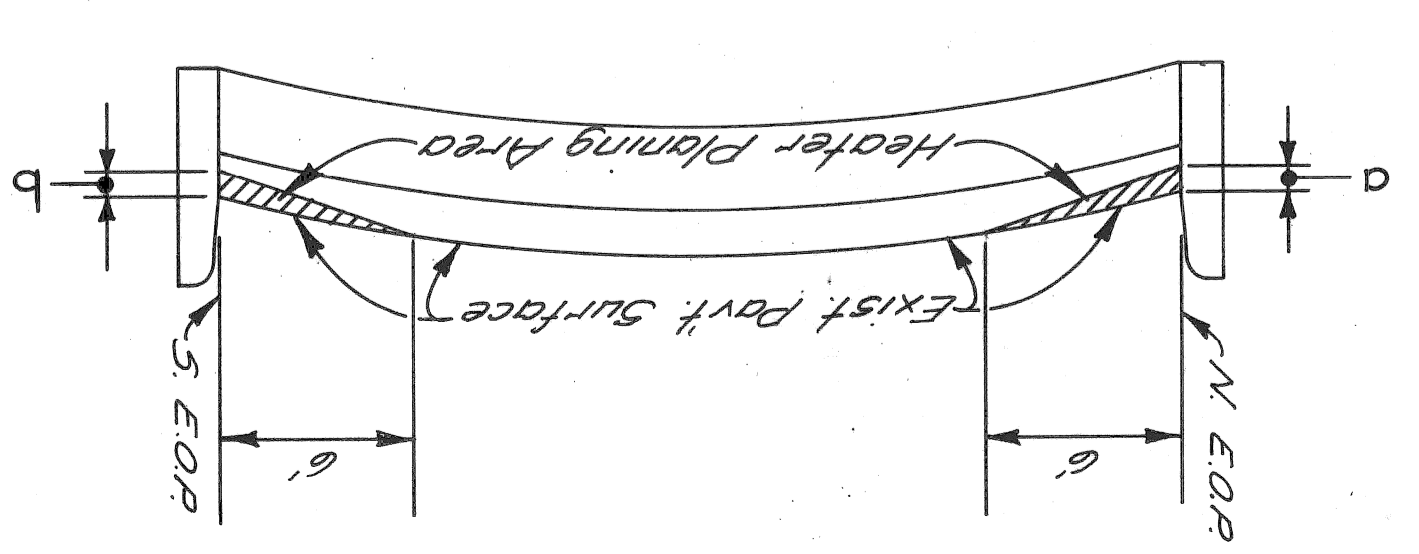
Item	Approx. Thickness	Rate
Asphalt	1 inch	85 - 100
Bit Conc Wearing Course (3/4") Type "F"	1 inch	130 lbs/sq. yd.
Bit Conc Leveling Course (2.5")	1 1/2 inch	130 lbs/sq. yd.
Bit Bond Coat (Incidental)		0.20 gal/sq. yd. (Includes .05 gal. tack coat)

TYPICAL CROSS-SECTION
PLYMOUTH AVE. RESURFACING
MANOR TO GRAND RIVER



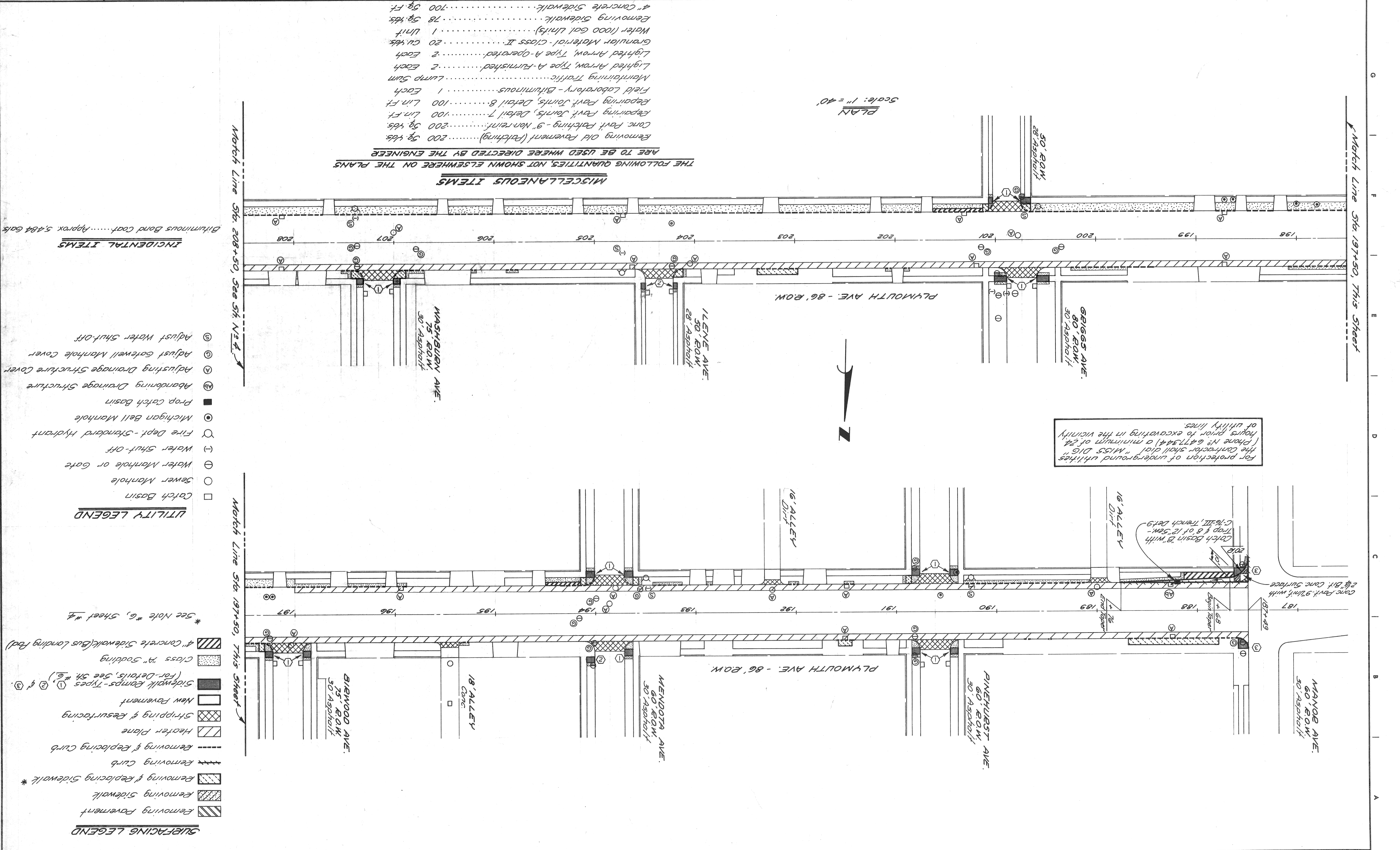
HEATER PLANE SCHEDULE

STATION TO	STATION	b	d
187+00	to 197+00	2 1/2"	2 1/2"
197+00	to 201+00	1"	0"
201+00	to 204+50	2 1/2"	0"
204+50	to 207+00	1"	0"
207+00	to 210+30	2 1/2"	0"
210+30	to 213+00	2 1/2"	2 1/2"
213+00	to 214+60	2 1/2"	1"
214+60	to 215+50	0"	0"
215+50	to 218+50	2 1/2"	0"
218+50	to 227+00	2 1/2"	2 1/2"
227+00	to Grand River	0"	2 1/2"



SHEET 3 OF 8 SHEETS	PROJECT Mtb 82101	JOB NO. 05520 A	DATE OCT 19, 1973	CITY OF DETROIT DEPARTMENT OF PUBLIC WORKS ENGINEER OF EXPRESSWAYS	APPROVED: <i>Blair S. [Signature]</i>	DESIGNED BY: M. POLITO	TRACED BY:	CHECKED BY: R. PLATER	REVISIONS LOCATED BY COORDINATES ON SHEET
					ENGINEER OF EXPRESSWAYS	DESIGNED BY: M. POLITO	TRACED BY:	CHECKED BY: R. PLATER	DESCRIPTION

PLYMOUTH AVE. RESURFACING
MANOR TO STA. 208+50



SURFACING LEGEND

- Removing Pavement
- Removing Sidewalk
- Removing & Replacing Sidewalk *
- Removing & Replacing Curb
- Removing Curb
- Heater Plane
- Stripping & Resurfacing
- New Pavement
- Sidewalk Ramps - Types 1, 2 & 3
(For Details, See Sh. #6.)
- Class 'A' Sodding
- 4" Concrete Sidewalk (Bus Landing Pad)

* See Note #6, Sheet #4

UTILITY LEGEND

- Catch Basin
- Sewer Manhole
- Water Manhole or Gate
- Water Shut-Off
- Fire Dept. - Standard Hydrant
- Michigan Bell Manhole
- Prop. Catch Basin
- Abandoning Drainage Structure
- Adjusting Drainage Structure Cover
- Adjust Gatewell Manhole Cover
- Adjust Water Shut-Off

INCIDENTAL ITEMS

Bituminous Bond Coat..... Approx. 5,484 Gals.

MISCELLANEOUS ITEMS

- Removing Old Pavement (Patching)..... 200 Sq. Yds.
- Conc. Pavt. Patching - 9" Non-reinf..... 200 Sq. Yds.
- Repairing Pavt. Joints, Detail 7..... 100 Lin. Ft.
- Repairing Pavt. Joints, Detail 8..... 100 Lin. Ft.
- Field Laboratory - Bituminous..... 1 Each
- Maintaining Traffic - Lump Sum..... 2 Each
- Lighted Arrow, Type A - Furnished..... 2 Each
- Lighted Arrow, Type A - Operated..... 2 Each
- Granular Material - Class II..... 20 Cu. Yds.
- Water (1000 Gal. Units)..... 1 Unit
- Removing Sidewalk..... 78 Sq. Yds.
- 4" Concrete Sidewalk..... 700 Sq. Ft.

ARE TO BE USED WHERE DIRECTED BY THE ENGINEER
THE FOLLOWING QUANTITIES, NOT SHOWN ELSEWHERE ON THE PLANS

Scale: 1" = 40'
PLAN

For protection of underground utilities (Phone No. 6477344) a minimum of 24 hours prior to excavating in the vicinity of utility lines.

Catch Basin B with Trap & 8" of 12" Sewer C-76 III Trench Dets 9

Conc. Pavt. 9" thick with 2 1/2" Bit. Conc. Surface

MANOR AVE.
60' ROW,
30' Asphalt

PINEHURST AVE.
60' ROW,
30' Asphalt

MENDOTA AVE.
60' ROW,
30' Asphalt

BIRCHWOOD AVE.
75' ROW,
30' Asphalt

GRIGGS AVE.
80' ROW,
30' Asphalt

LEVE AVE.
50' ROW,
28' Asphalt

WASHBURN AVE.
75' ROW,
30' Asphalt

PLYMOUTH AVE. - 86' ROW

Match Line Sta. 197+50, This Sheet

Match Line Sta. 208+50, See Sh. #4

1. Items in the berm area between Wyoming and the Railroad.
 A. Remove concrete driveway
 B. Construct 4" concrete sidewalk, 6" wide, 1" off the property line.
 C. Construct conc. curb E-4, 7" face
 D. Sod area between curb & walk

2. Items in berm between Northlawn and Grand River.
 A. Remove conc. drives, between part edge & sowed line as directed by the Engineer.
 B. Construct 4" concrete sidewalk for Bus Landing Pad.
 C. Construct conc. curb E-4, 7" face
 D. Sod area between walk & curb.

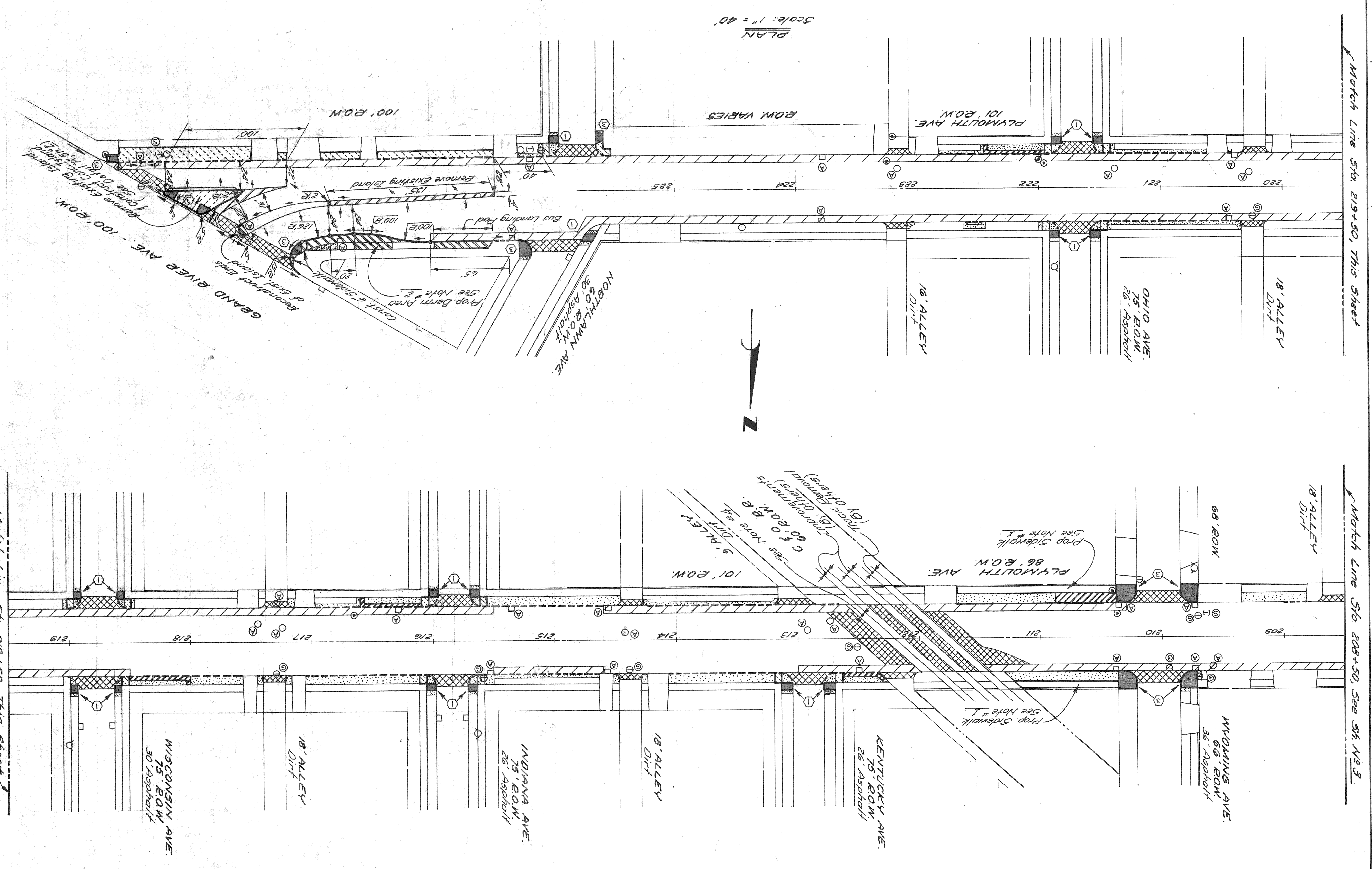
3. Place the curb so that it will have the most possible face exposure (not exceeding 7 inches) while still allowing the berm to drain to the street pavement.
 4. Remove the bricks in this strip. If no conc. base exists, pave with conc. base and asphalt surface. otherwise, add asphalt surface.

5. Construct Divider according to MDSH Standard Plan II-38A, except the depth of the adjacent proposed driveway surface is 4", not 2", and the horizontal alignment is as shown on these plans.

6. New sidewalk shall be 6" thick in certain areas as described in the supplemental specifications in the proposal.

- NOTES:**
- ⊕ Catch Basin
 - ⊖ Sewer Manhole
 - ⊕ Water Manhole or Gate
 - ⊖ Water Shut-Off
 - ⊕ Fire Dept. Standard Hydrant
 - ⊖ Michigan Bell Manhole
 - ⊕ Adjusting Drainage Structure Cover
 - ⊖ Adjust Gatewell Manhole Cover
 - ⊕ Adjust Water Shut-Off

- UTILITY LEGEND**
- ▨ 4" Concrete Sidewalk (Bus Landing Pad)
 - ▨ 7" Concrete Island
 - ▨ Corrugated Conc. Divider-Type II (See Note 5)
 - ▨ Class "A" Sodding
 - ▨ Sidewalk Comps. Types ①, ② & ③ (For Details, See Sheet No. 6)
 - ▨ New Pavement
 - ▨ Striping & Resurfacing
 - ▨ Heater Plane
 - ▨ Removing & Replacing Curb (See Note 3)
 - ▨ Removing Curb
 - ▨ Removing & Replacing Sidewalk (See Note 6)
 - ▨ Removing Sidewalk
 - ▨ Removing Pavement
- SURFACING LEGEND**

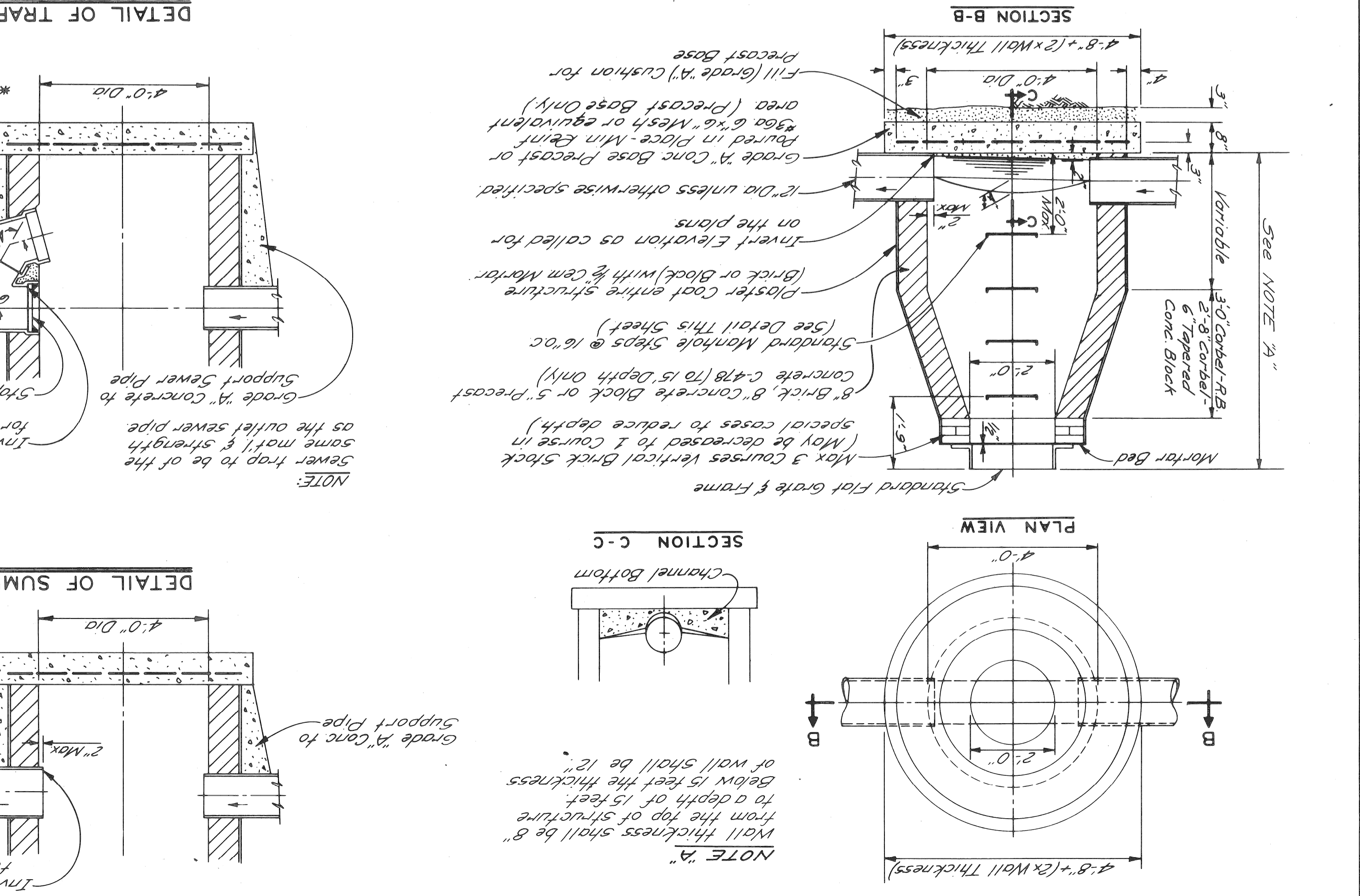
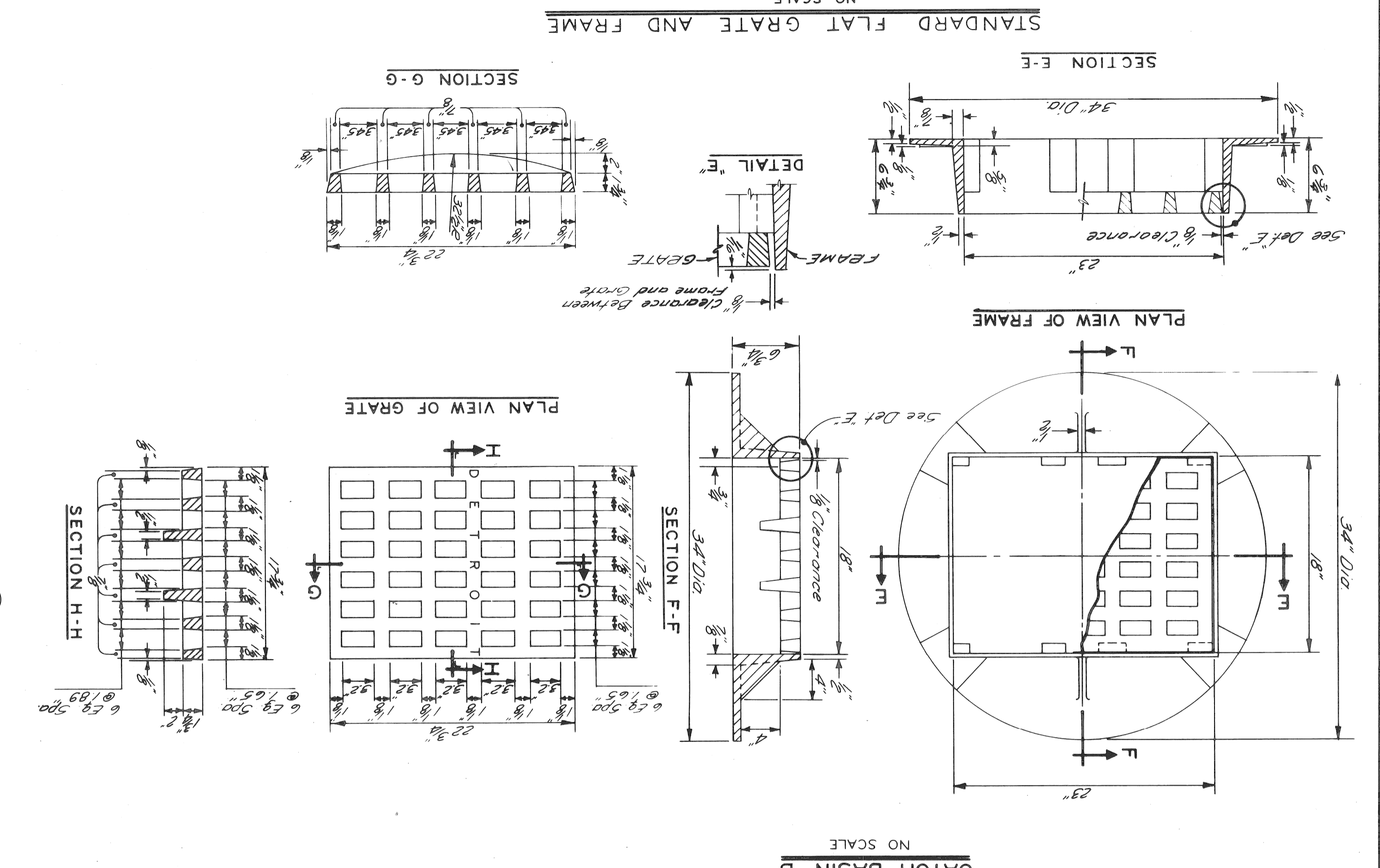
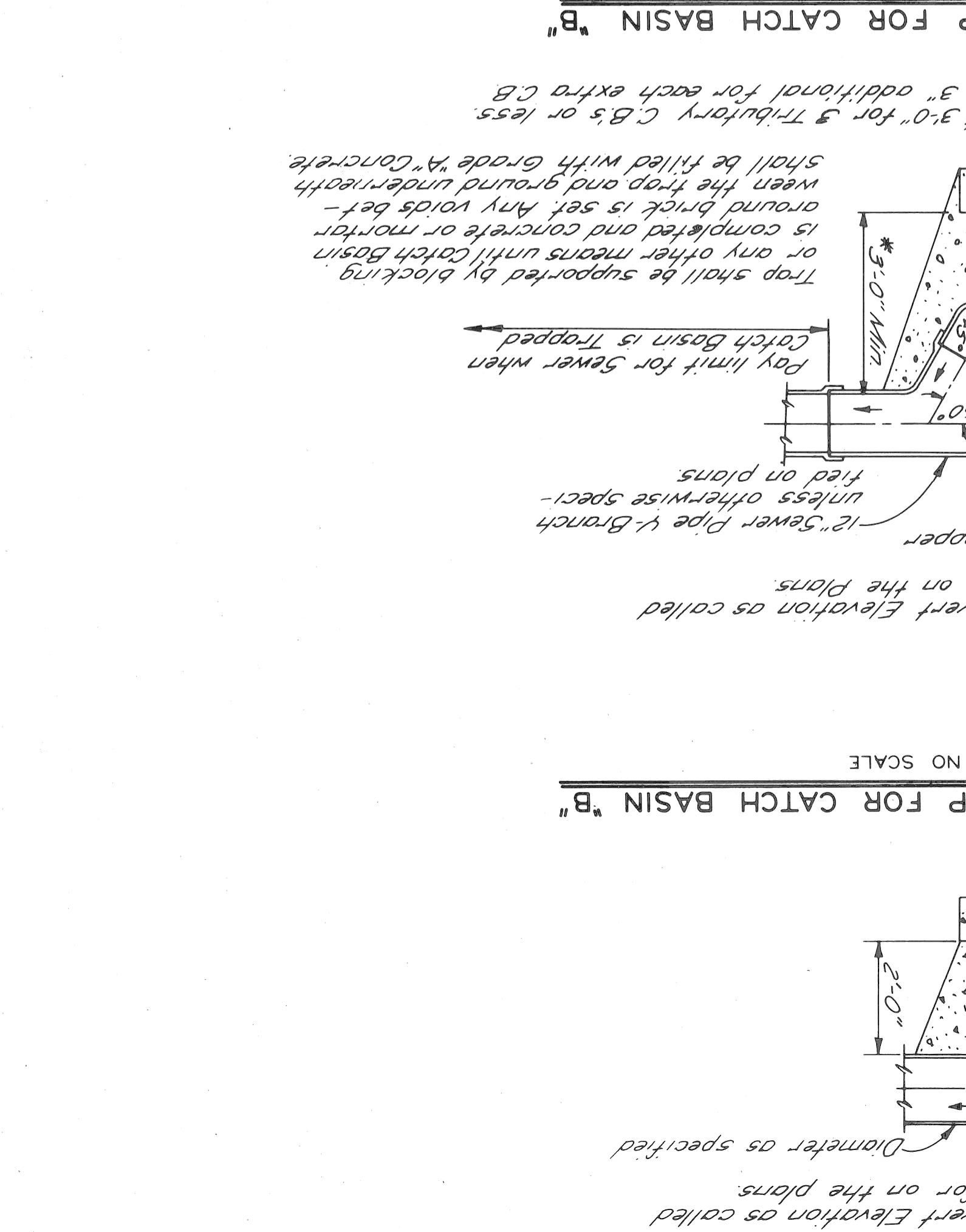
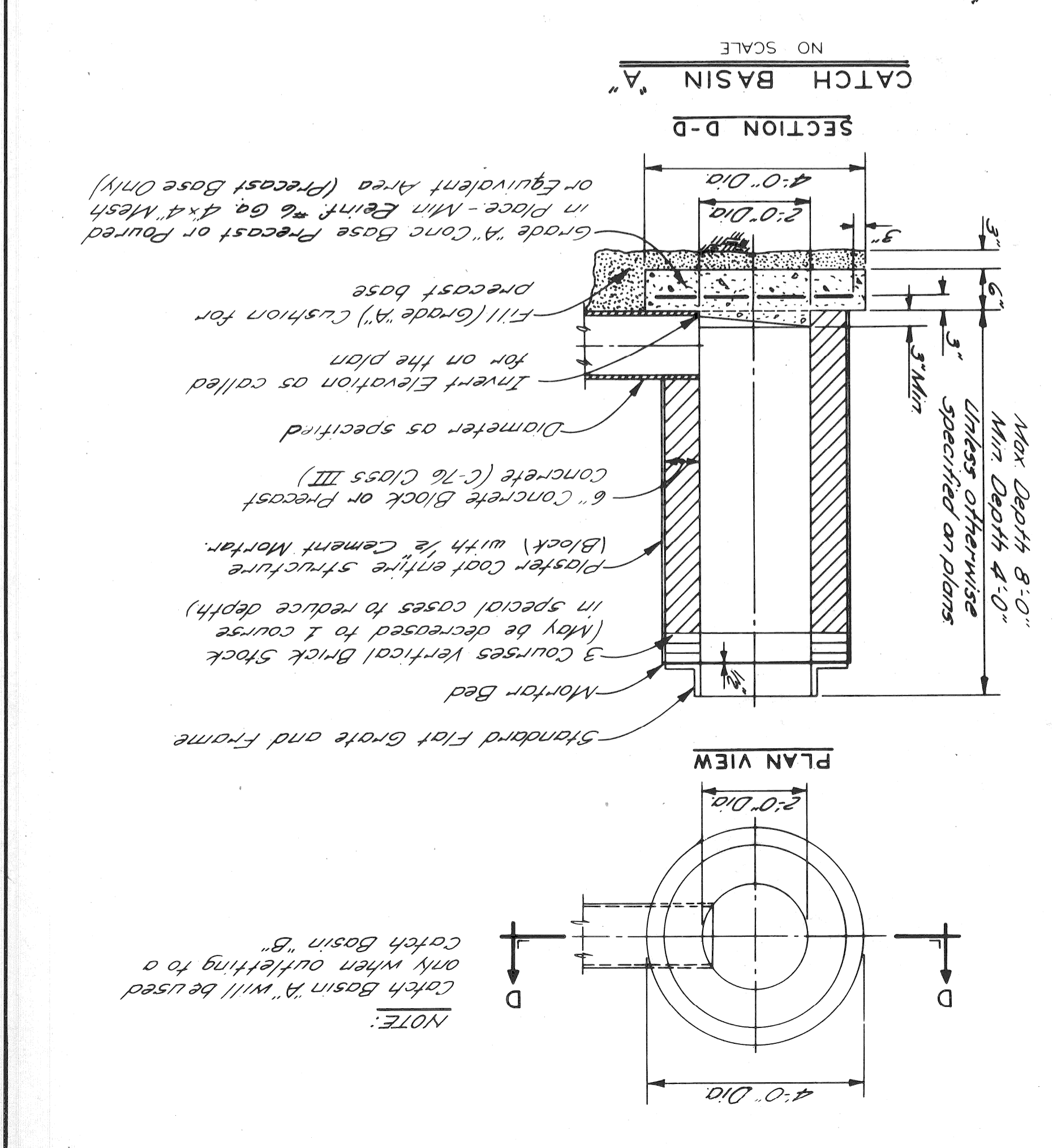
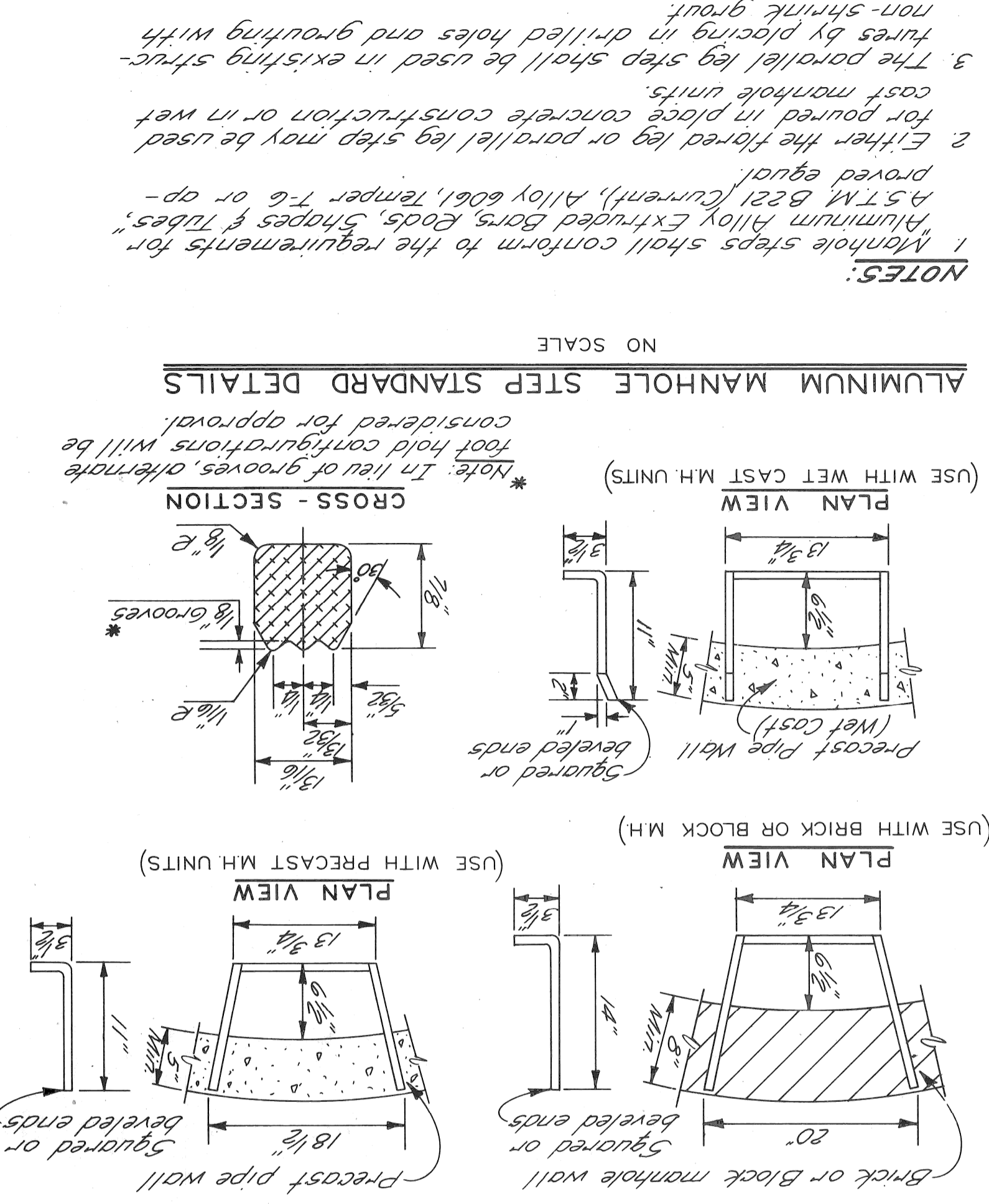


DETAILS OF STANDARD
 CATCH BASINS "A" & "B"
 AND FLAT GRATE & FRAME

CITY OF DETROIT
 DEPARTMENT OF PUBLIC WORKS
 CITY ENGINEERS OFFICE

APPROVED:	DESIGNED BY:	DRAWN BY:	TRACED BY:	CHECKED BY:	REVISIONS LOCATED BY COORDINATES ON SHEET
<i>John Erickson</i>				D MILZ	
ENGINEER OF STREETS					
ENGINEER OF EXPRESSWAYS					
HEAD CIVIL ENGINEER					

- GENERAL NOTES**
- The materials & workmanship shall be in accordance with the current standard specifications.
 - Center of catch basin shall be 20 inches from back of curb.
 - All sizes & flow lines of pipe, and elevations for top & bottom of structures shall be determined from the plans or construction requirements.
 - The bell shall be removed from the first length of outlet pipe projecting through the wall of the structures.
 - When any structure is constructed of precast concrete or concrete block, the top of the masonry shall be left sufficiently low to permit proper adjustment of cover to grade by the use of mortar or bricks as directed by the Engineer.
 - A trap, as detailed on this sheet, shall be placed where called for in the outlet sewer line of catch basins "B". This trap shall be set into the masonry & the trap shall be completely filled with cement, mortar or concrete, so as to hold trap securely in place.
 - The traps will be paid for separately of the catch basin construction each which price shall include the extra catch basin construction required and a plaster coat of mortar 1/2 inch in thickness shall be applied to the outer surface of the structure as shown. A 1/2 inch cement plaster coat shall be placed on the inside of all sumps.
 - Contractor shall verify elevations of existing utilities to enable construction to indicated elevations shown on drawings. If necessary, invert elevations shown on the drawings may be altered in the field to clear existing utilities. Such alterations, upward or downward, shall be at no change in contract price.
 - When precast concrete pipe sections are used for catch basins, either a section of the inlet and outlet pipes or an opening or eye for the inlet & outlet pipes shall be cast into the wall of the catch basin pipe when it is being manufactured. Eyes in precast pipe sections shall be furnished to accommodate a flexible joint connection such as Press-Wedge by Press Seal Gasket Corp or Res-Seal by Seals Mfg. Corp.
 - By limit for sewers shall be inside faces of structures unless otherwise noted.



QUANTITY SHEET

AS PER PLANS
 AS CONSTRUCTED

ITEMS	MANOR TO STA. 208 + 50	STA. 208 + 50 TO GRAND RIVER	MISCELLANEOUS ITEMS	TOTALS	S-I-Z-C	TOTALS	MISCELLANEOUS ITEMS	MANOR TO STA. 208 + 50	STA. 208 + 50 TO GRAND RIVER	MISCELLANEOUS ITEMS	TOTALS
Removing Pavement	3	607	1	610	670	670	50	200	200	50	670
Removing Sidewalk	257	542	1	799	877	877	100	100	100	100	877
Removing Curb	1989	1837	1	3826	3826	3826	100	100	100	100	3826
Abandoning Drainage Structures	1	1	1	3	1	1	100	100	100	100	303
Removing Old Pavement (Patching)	1	200	1	201	200	200	100	100	100	100	201
Removing Bituminous Surface	369	1010	1	1379	1379	1379	100	100	100	100	1379
Removing Bituminous Surface - Planer Method	2028	2081	1	4109	4109	4109	100	100	100	100	4109
Earth Excavation	40	30	1	70	70	70	100	100	100	100	70
Conc. Pavt. Patching - 9" Non-Reinf.	1	200	1	201	200	200	100	100	100	100	201
Concrete Base Course - Non-reinforced - 9"	50	50	1	100	50	50	100	100	100	100	100
Bituminous Concrete Leveling Course - (25A)	883	890	1	1773	1773	1773	100	100	100	100	1773
Bituminous Concrete Wearing Course (31A-Type F)	815	822	1	1637	1637	1637	100	100	100	100	1637
Repairing Pavement Joints, Detail 7	1	100	1	101	100	100	100	100	100	100	101
Repairing Pavement Joints, Detail 8	1	100	1	101	100	100	100	100	100	100	101
Adjust Water Shut-off	3	2	1	6	7	7	100	100	100	100	7
Catch Basin "B"	1	1	1	3	1	1	100	100	100	100	3
12" Sewer (C-76-III) Trench Detail 9	8	8	1	16	8	8	100	100	100	100	16
Adjusting Drainage Structure Covers	20	29	1	49	49	49	100	100	100	100	49
12" Sewer Trap	1	1	1	3	1	1	100	100	100	100	3
Concrete Curb, Detail E-4	1997	2246	1	4243	4243	4243	100	100	100	100	4243
Concrete Divider - Type II (Non-Reinf.)	1	94	1	95	94	94	100	100	100	100	95
4" Concrete Sidewalk	2164	6200	700	9064	9064	9064	100	100	100	100	9064
6" Concrete Sidewalk	792	1160	1	1952	1952	1952	100	100	100	100	1952
Sidewalk Eamp - Type 1	15	16	1	31	31	31	100	100	100	100	31
Sidewalk Eamp - Type 2	3	3	1	6	3	3	100	100	100	100	6
Sidewalk Eamp - Type 3	2	10	1	12	12	12	100	100	100	100	12
Concrete Island	1	90	1	90	90	90	100	100	100	100	90
Field Laboratory - Bituminous	1	1	1	3	1	1	100	100	100	100	3
Maintaining Traffic	1	1	1	3	1	1	100	100	100	100	3
Lighted Arrow, Type A - Furnished	1	2	1	4	2	2	100	100	100	100	4
Lighted Arrow, Type A - Operated	1	2	1	4	2	2	100	100	100	100	4
Class "A" Sodding	1093	1014	1	2107	2107	2107	100	100	100	100	2107
Adjust Gatewell Manhole Cover	16	8	1	24	24	24	100	100	100	100	24
Water (1000 gal Units)	1	1	1	3	1	1	100	100	100	100	3
Granular Material - Class II	1	20	1	21	20	20	100	100	100	100	21