

B.P.R.	STATE	PROJECT NO.	FISCAL YEAR	SHEET NO.	TOTAL SHEETS
4	MCH.	03185			
SHEET TOTAL		TWP.		SHEET NO.	
1		DETROIT WAYNE		1	

THE IMPROVEMENTS COVERED BY THESE PLANS SHALL BE DONE IN ACCORDANCE WITH THE MICHIGAN DEPARTMENT OF STATE HIGHWAYS CURRENT STANDARD SPECIFICATIONS AND SUPPLEMENTAL SPECIFICATIONS.

CITY OF DETROIT
DEPARTMENT OF PUBLIC WORKS
 IN CO-OPERATION WITH
MICHIGAN DEPARTMENT OF STATE HIGHWAYS
AND
BUREAU OF PUBLIC ROADS
 PLAN AND PROFILE OF PROPOSED
FEDERAL AID TOPICS PROJECT NO. MICHIGAN T 4000 (4)
JOB NO. 03185 A

CONTRACT FOR INTERSECTION IMPROVEMENT

LOCAL AUTHORITY APPROVAL
 CITY OF DETROIT
 DEPARTMENT OF PUBLIC WORKS
 GOVERNMENTAL AGENCY
 RECOMMENDED FOR APPROVAL
 DATE 2/9/72
 ACTING HEAD CIVIL ENGINEER
W.A. Gorman

APPROVED BY
 DATE 2-5-71
 ACTING CITY ENGINEER
R. R. Hinkle

APPROVED BY
 DATE 2-5-71
 COMMISSIONER OF PUBLIC WORKS
Edward Braddock

LOCAL AUTHORITY APPROVAL
 CITY OF DETROIT
 DEPARTMENT OF STREETS AND TRAFFIC
 GOVERNMENTAL AGENCY
 APPROVED BY
 DATE 2-5-71
C. J. Mose

RECOMMENDED FOR APPROVAL
 ENGINEER OF TRAFFIC AND SAFETY
 DATE 3-30-71
H. J. Cooper

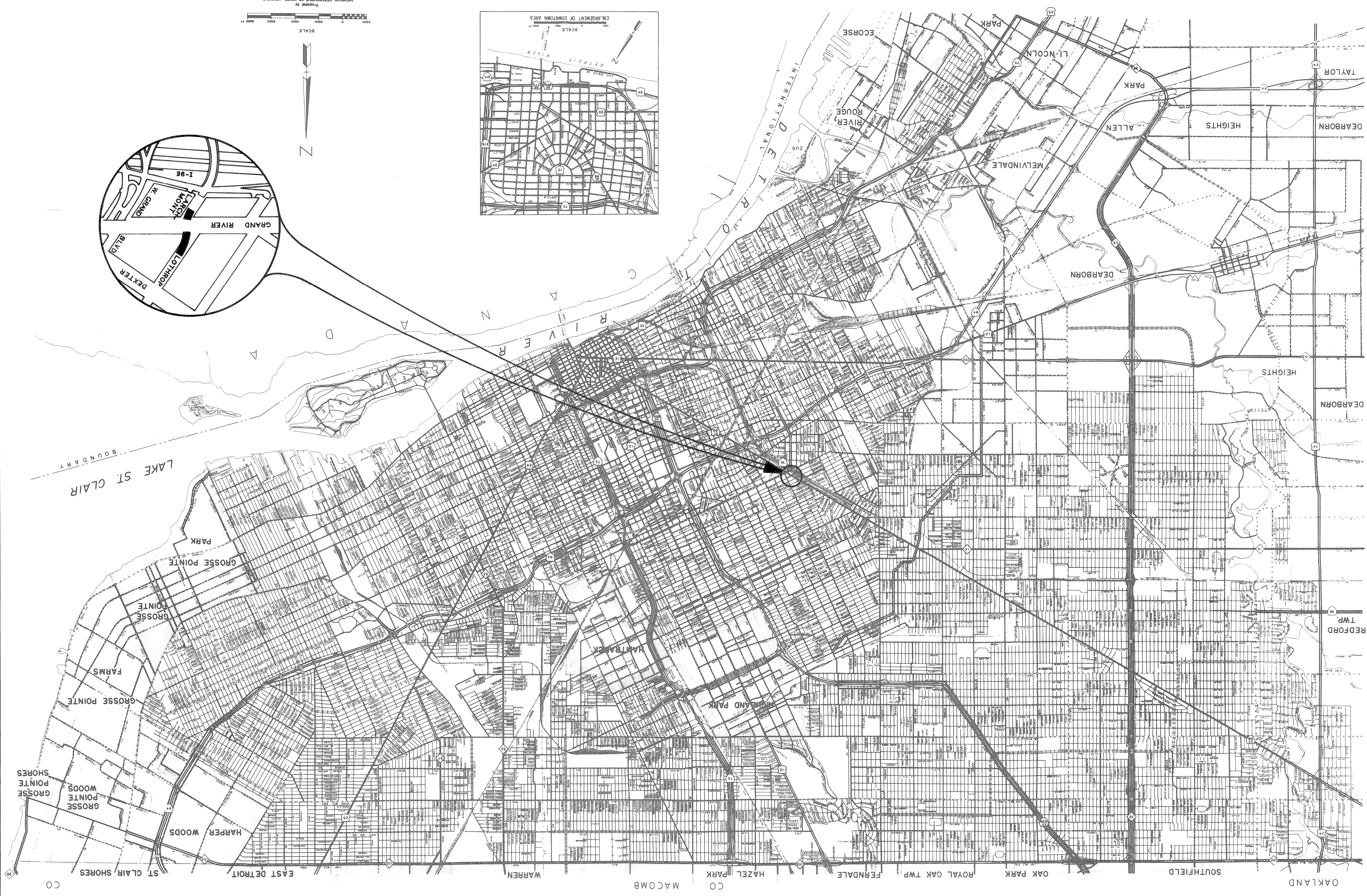
APPROVED FOR COMMISSION
 DEPARTMENT OF STATE HIGHWAYS APPROVAL
 DATE 9/1/71
 DEPUTY DIRECTOR
[Signature]

PREPARED UNDER SUPERVISION OF
 REGISTERED PROFESSIONAL ENGINEER
 DATE 8/4/55
R. R. Hinkle

CITY OF DETROIT
 ORGANIZATION
 DETROIT, MICHIGAN
 ADDRESS

U.S. DEPARTMENT OF TRANSPORTATION
 FEDERAL HIGHWAY ADMINISTRATION
 BUREAU OF PUBLIC ROADS
 APPROVED

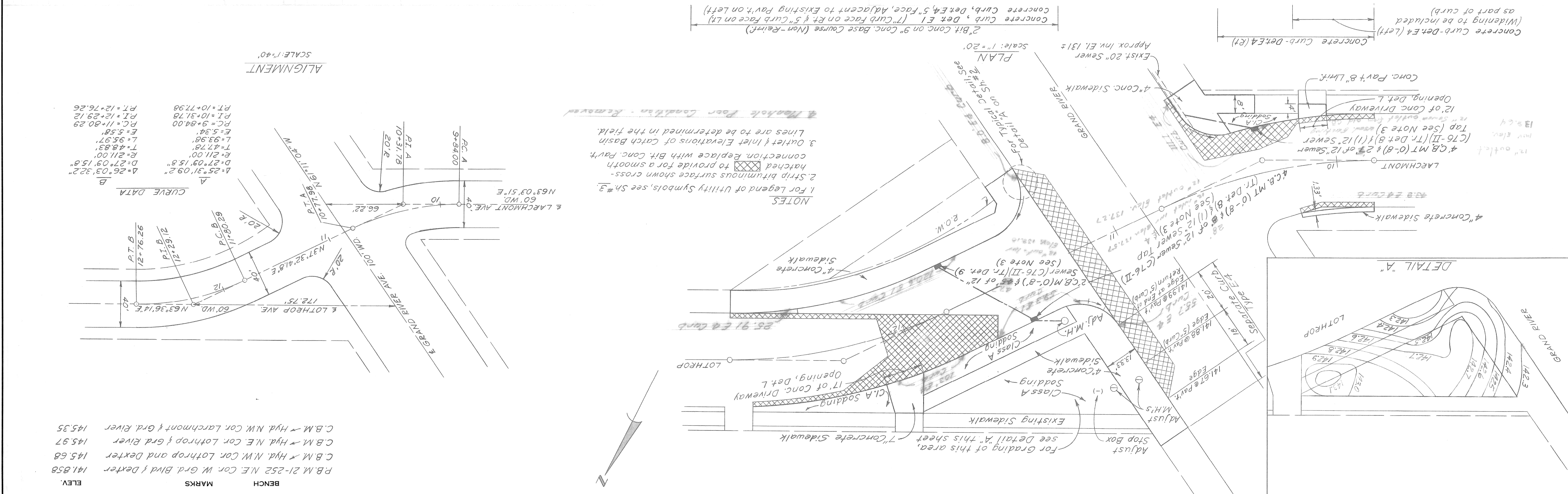
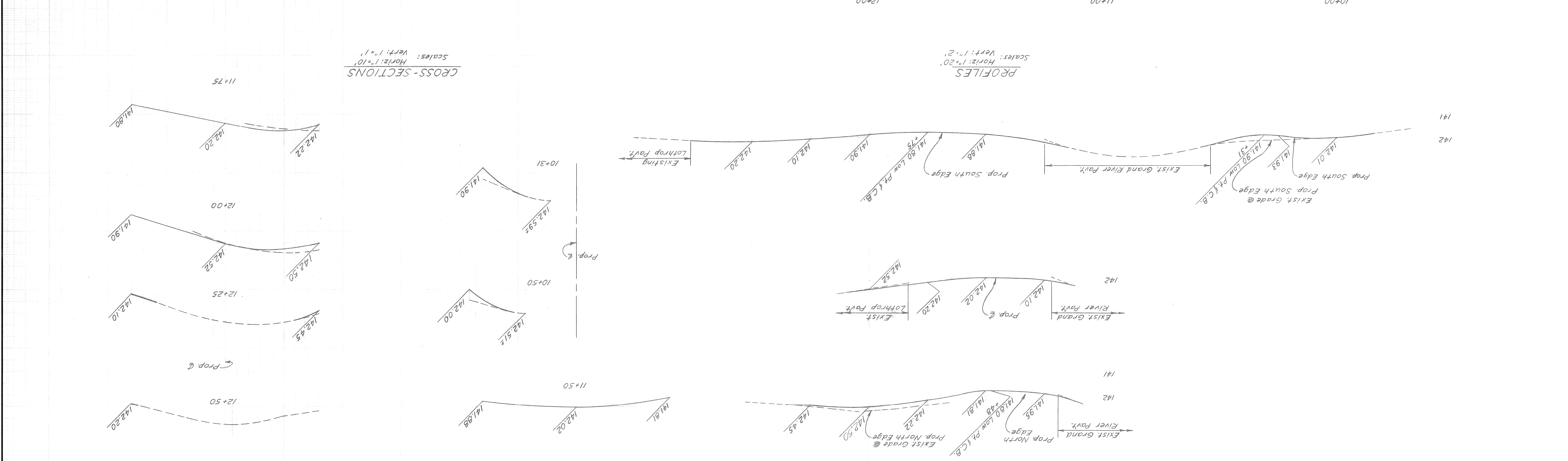
DATE
 DISTRICT ENGINEER
 PROJECT NO. T 4000 (4)
 SHEET NO. 1



- INDEX OF SHEETS
1. TITLE SHEET
 2. TYPICAL CROSS SECTIONS AND QUANTITIES
 3. REMOVAL AND UTILITY PLAN
 4. ALIGNMENT, PLAN AND PROFILE
 5. P.L.C. PLAN AND QUANTITIES
 6. I.L.P.C. STANDARDS
- STANDARD PLANS
- E-4-A-27M
 - E-4-A-29H
 - E-4-A-33L
 - E-4-A-110D
 - E-4-A-129A
 - E-6-A-56
 - I-5A
 - IV-83A
 - IV-84A
 - VI-125A

10/11/71, Department of State Highways, Detroit, Michigan

DATE JAN. 22, 1971		JOB NO. 03185		PROJECT T 4000 (4)		SHEET 4 OF 11 SHEETS	
ALIGNMENT, PLAN AND PROFILE				CITY OF DETROIT DEPARTMENT OF PUBLIC WORKS CITY ENGINEERS OFFICE			
JOG ELIMINATION LOTROP AV. AT GRAND RIVER AVE.				APPROVED: <i>W.R. [Signature]</i> CHECKED BY: <i>D. MILZ</i> BY: <i>D. MILZ</i> GRADE: B. TEMPORELLI ESTIMATE: D. MILZ FINAL: []			
REVISIONS		DESCRIPTION		NO.		DATE	



SCALE	HORIZONTAL	VERTICAL
NO. PG.	NO. PG.	NO. PG.
DATE	DATE	DATE
LEVL.	LEVL.	LEVL.

NOTE - FOR SYMBOLS (C) ETC. SEE STANDARD DETAIL DRAWING NO. C-173

BEFORE STARTING CONSTRUCTION - CONTRACTOR MUST CHECK WITH UTILITIES FOR LOCATIONS OF EXISTING STRUCTURES WHETHER OR NOT INDICATED ON PLANS.

MARKS

BENCH

ELEV.

P.B.M. 21-252 N.E. Cor. W. Grd. Blvd & Dexter 141.858
 C.B.M. x Hydr. N.W. Cor. Lotthrop and Dexter 145.68
 C.B.M. x Hydr. N.E. Cor. Lotthrop & Grd. River 145.97
 C.B.M. x Hydr. N.W. Cor. Larchmont & Grd. River 145.35

REVISIONS LOCATED BY COORDINATES ON SHEET	1	2	3	4	5	6	7	8	9	10	11
DESCRIPTION											
DATE											
DRWN. CRD.											
APRD. DATE											
CHECKED BY											
TRACED BY											
DRAWN BY											
DESIGNED BY											
REFERENCES											
APPROVED:											

CITY OF DETROIT PUBLIC LIGHTING COMMISSION

PROJECT NO. T4000(4) JOB NO. 03185

