

CITY OF DETROIT ECONOMIC DEVELOPMENT CORPORATION

PAVING OF SPRINGWELLS COURT SOUTH OF JEFFERSON AVE.

INDEX OF SHEETS BY TYJT

1	TITLE SHEET
C1.10	GENERAL PLAN OF SITE
C1.11	SURVEY CONTROL PLAN
C1.20	SITE PLAN
C1.30	TYPICAL CROSS SECTIONS
C1.40	SOIL EROSION CONTROL PLAN
C1.50	ALIGNMENT PLAN
C2.10	UTILITY PLAN - YELLOW FREIGHT PROPERTY
C2.11	UTILITY PLAN - 3+50 TO 11+00
C2.12	UTILITY PLAN - 11+00 TO 20+60
C2.13	UTILITY PLAN - 20+60 TO 30+00
C2.14	UTILITY PLAN - 30+00 TO JEFFERSON
C3.11	PLAN & PROFILES - 3+50 TO 16+00
C3.12	PLAN & PROFILES - 16+00 TO 28+50
C3.13	PLAN & PROFILES - JEFFERSON TO 28+50
C3.22	RAILROAD PROFILES
C3.31	WATER MAIN PROFILE YELLOW FREIGHT PROP.
C3.41	MISC. PROFILES
C3.42	MISC. PROFILES
C3.51	DETAILED GRADE AREA 3+50 TO 6+50
C3.52	DETAILED GRADE AREA 6+50 TO 11+50
C3.53	DETAILED GRADE AREA 14+20 TO 20+30
C3.54	DETAILED GRADE AREA 31+00 TO JEFFERSON
C4.01	STRUCTURE TABLES
C4.10	SCHROEDER OUTFALL CHAMBERS
C4.20	STANDARD DETAILS
C4.21	SPECIAL DETAILS
C4.22	SPECIAL DETAILS
C4.23	SPECIAL DETAILS
C4.30	DWSD MISC. DETAILS
C4.40	SEWER DETAILS
C5.10	PAYEMENT MARKING AND SIGNING PLAN

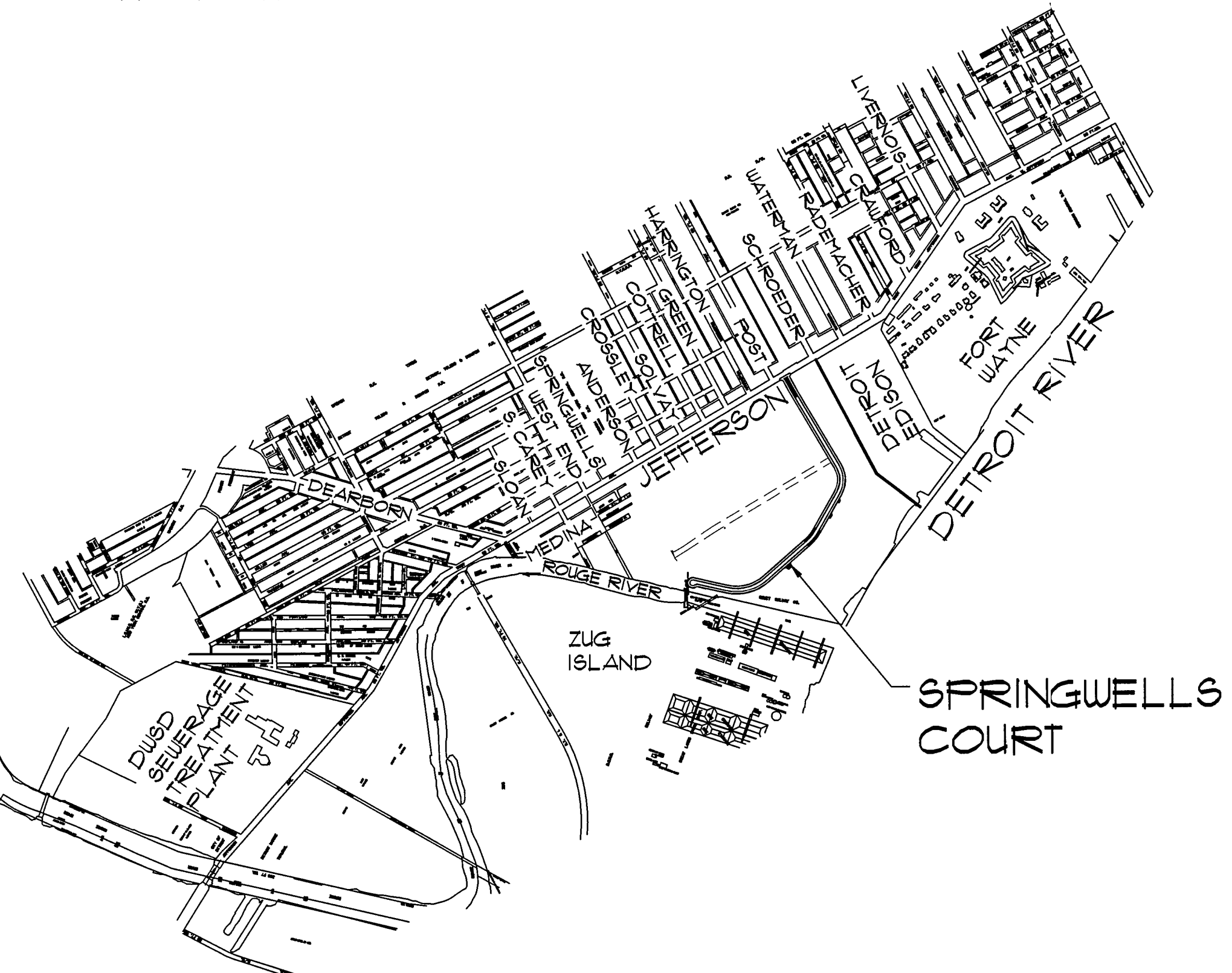
INDEX OF SHEETS BY MCECO/CEA

1	LEGEND
2	GENERAL INFORMATION
3	STREET LIGHTING - JEFFERSON TO 31+00
4	STREET LIGHTING - 19+00 TO 31+00
5	STREET LIGHTING - CUL-DE-SAC TO 19+00



GENERAL NOTES:

1. ALL WORK SHALL BE IN ACCORDANCE WITH THE CITY OF DETROIT'S CITY ENGINEERING DIVISION, DEPARTMENT OF PUBLIC WORKS "STANDARD SPECIFICATIONS FOR PAVING AND RELATED CONSTRUCTION" AS WELL AS THEIR STANDARD PLANS FOR STREET AND ALLEY CONSTRUCTION. WORK NOT COVERED IN THESE DOCUMENTS SHALL BE IN ACCORDANCE WITH THE 2003 MDOT STANDARD SPECIFICATIONS FOR CONSTRUCTION AND SPECIAL PROVISIONS. IN ADDITION, ALL WORK WITH SEWERS, DRAINAGE STRUCTURES, AND WATER LINES SHALL BE IN ACCORDANCE WITH THE STANDARD PLANS AND SPECIFICATIONS OF THE DETROIT DEPARTMENT OF WATER AND SEWERAGE (DWSD).
2. DRAINAGE DESIGN - CITY OF DETROIT 10 YEAR STORM EVENT. DESIGN SEWER VELOCITY MINIMUM IS 3 FPS AND THE MAXIMUM IS 7 FPS.
3. STORM DRAIN STUBS FOR EACH PARCEL HAVE BEEN PROVIDED FOR FUTURE CONNECTION BY PROPERTY OWNERS AS INDICATED ON DRAWING C1.20. TEMPORARY BASIN OUTLET STRUCTURES AND TEMPORARY DETENTION PONDS, WHICH WILL BE MAINTAINED BY THE RESPECTIVE PARCEL OWNERS UNTIL THEY ARE DEVELOPED, FOR PARCELS 9, 10, AND 12. EACH DEVELOPED PARCEL WILL BE REQUIRED TO DESIGN AND CONSTRUCT PERMANENT STORAGE FACILITIES TO RESTRICT AND CLEAN STORM EFFLUENT BEFORE DISCHARGE INTO THE COLLECTOR SEWER IN THE PUBLIC ROW. PERMITS WILL BE REQUIRED FROM THE CITY OF DETROIT'S DEPARTMENT OF WATER AND SEWERAGE (DWSD).
4. ALL NEW WATER LINES SHALL BE DUCTILE IRON, CLASS 56 WITH 8 MIL POLYETHYLENE WRAP AS PER DWSD STANDARDS; ALL NEW WATER LINES SHALL HAVE VITON (FKM) GASKETS; ALL NEW SEWER PIPE FOR THE COMBINED SEWER SHALL BE ASTM C-16, CLASS IV OR V (UNDER FUTURE RR SFURS); AND THE STORM WATER PIPING CONNECTION TO THE SCHROEDER OUTFALL SHALL BE WATER TIGHT/LEAK PROOF SMOOTH LINED, CORRUGATED, HIGH-DENSITY POLYETHYLENE (ENCASED IN CONCRETE UNDER RR SFURS).
5. FIRE HYDRANTS HAVE BEEN PLACED AT 300' NOMINAL SPACING ALONG THE ENTIRE NEW PUBLIC RIGHT OF WAY AND HAVE BEEN APPROVED BY THE CITY OF DETROIT'S FIRE MARSHALL.



7-13-04 FOR CONSTRUCTION

DESIGN/BUILD SPRINGWELLS COURT
SOUTH OF JEFFERSON AVENUE

 ANGELO IAFRATE CONSTRUCTION COMPANY <small>26400 SHERWOOD WARREN, MICHIGAN (586) 756-1070 48091</small>	 Tucker, Young, Jackson, Tull Inc. Consulting Engineers <small>565 E. LARNED, SUITE #300 DETROIT, MI 48226 (313) 963-0612/FAX (313) 963-2156</small>
---	---

LOCAL AUTHORITY APPROVAL
CITY OF DETROIT
CITY ENGINEERING DIVISION
DEPARTMENT OF PUBLIC WORKS

APPROVED BY: _____	DATE _____
ENGINEER OF STREETS	
APPROVED BY: _____	DATE _____
HEAD ENGINEER	
APPROVED BY: _____	DATE _____
CITY ENGINEER	

PREPARED UNDER SUPERVISION OF

ALAN J. SCHNEIDER
REGISTERED PROFESSIONAL ENGINEER

TUCKER, YOUNG, JACKSON, TULL, INC.
ORGANIZATION

565 LARNED, SUITE 300
DETROIT, MICHIGAN 48226
ADDRESS

(SEAL)

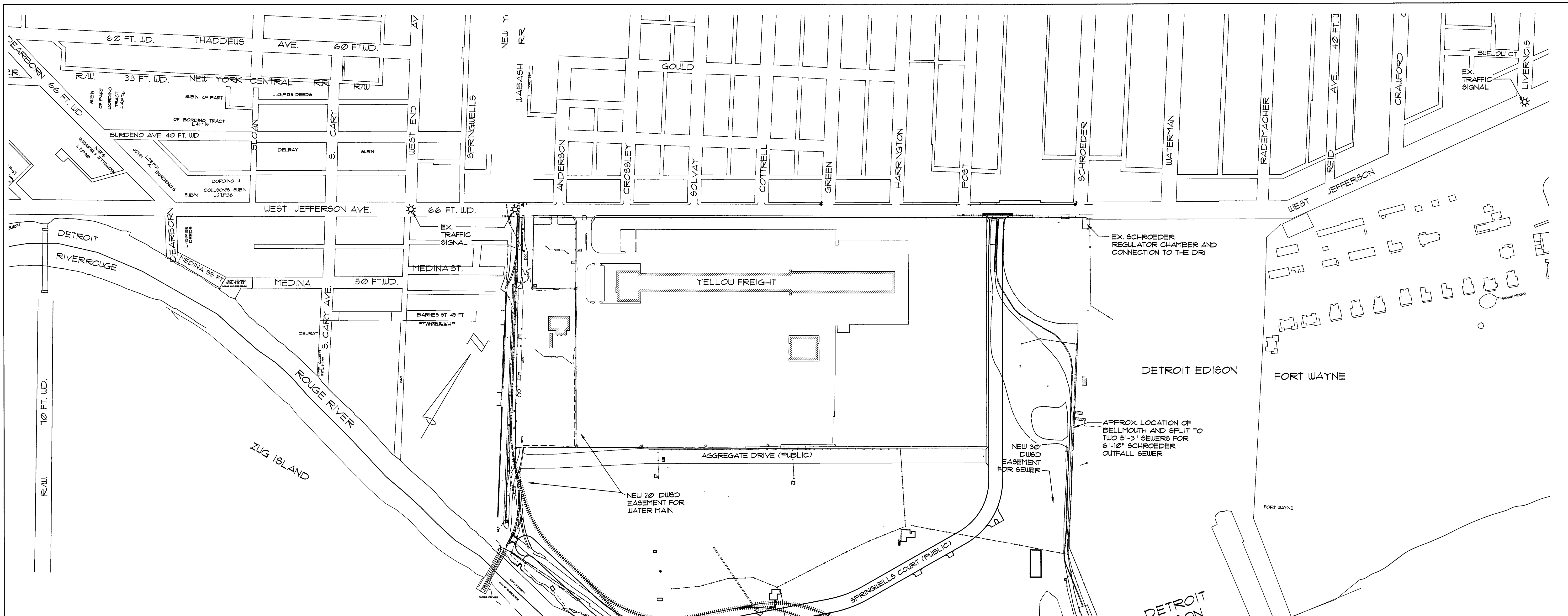
3 WORKING DAYS
BEFORE YOU DIG
CALL MISS DIG.
1-800-482-7171

For free location of public utility lines.
ALTERNATE NUMBER (800) MISS-DIG
COLOR CODES FOR UTILITY LOCATING

Yellow OIL & GAS	Blue WATER
Orange PHONE & CATV	Green STORM DRAIN
Red ELECTRIC	Brown SEWER
	Pink SURVEYING

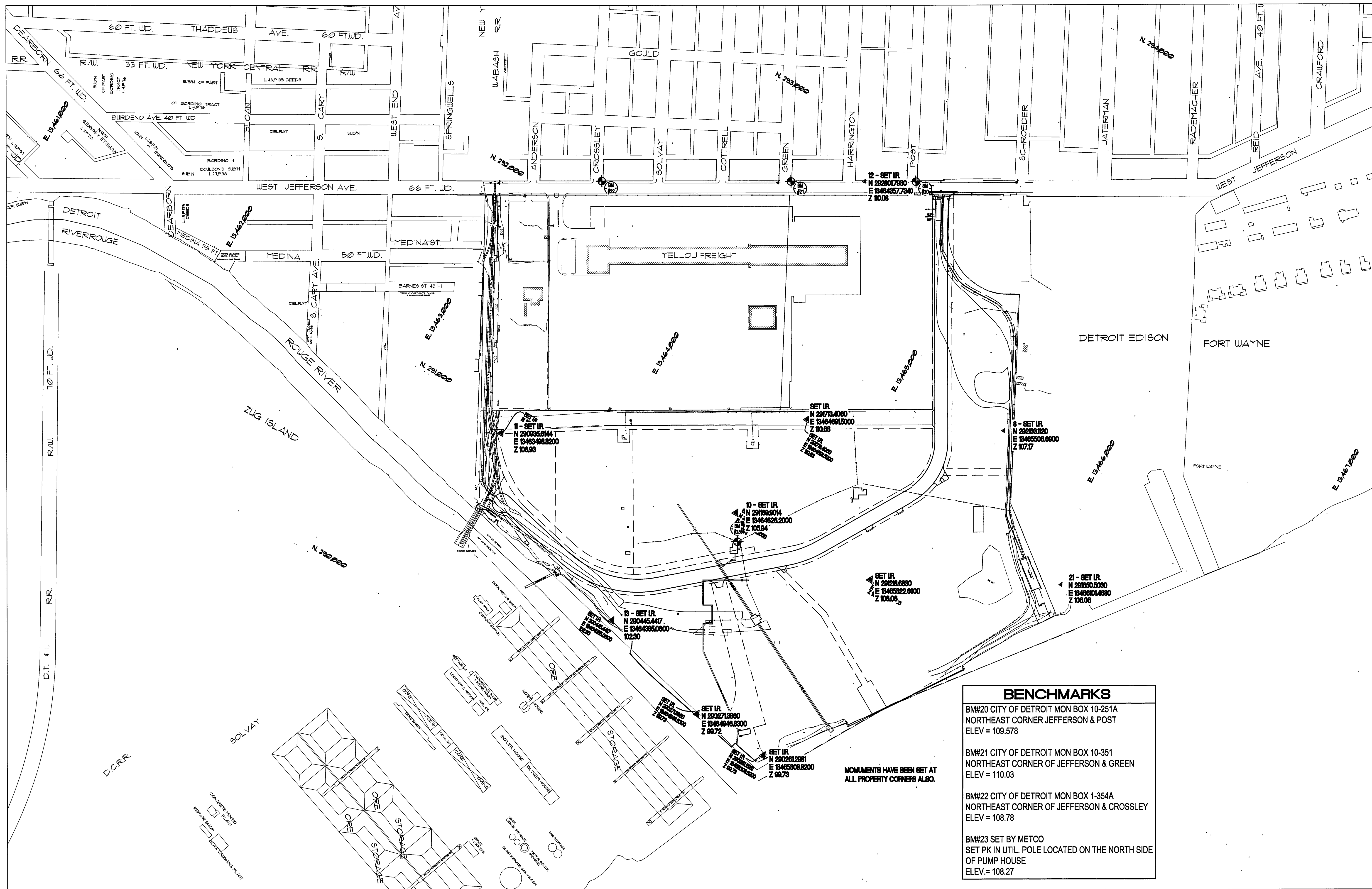
IF YOU ARE GOING TO WORK NEAR OVERHEAD WIRES - CALL MISS DIG

SHEET NO. 1



GENERAL NOTES

1. ELEVATION DATUM IS CITY OF DETROIT DATUM. ADD 419.155 TO CONVERT TO USGS 1921 DATUM.
2. DAMAGE TO EXISTING MANHOLES AND SEWERS OCCURRING DURING PIPE INSTALLATION SHALL BE REPAIRED BY THE CONTRACTOR, AS DIRECTED BY THE ENGINEER, AT NO ADDITIONAL COST TO DWS&D, OR OWNER.
3. THE CONTRACTOR SHALL COMPLY, AS APPLICABLE WITH THE REQUIREMENTS SET FORTH BY THE CITY OF DETROIT DEPARTMENT OF PUBLIC WORKS (D.P.W.) TRAFFIC ENGINEERING DIVISION, THE WAYNE COUNTY DEPARTMENT OF PUBLIC SERVICES (W.C.D.P.S.).
4. IF A CRANE, BACKHOE OR A BOOM WILL BE USED IN THE VICINITY OF DETROIT EDISON OVERHEAD LINES, THE DETROIT EDISON COMPANY MUST BE NOTIFIED THREE WORKING DAYS PRIOR TO SUCH USE.
5. ALL PROPOSED SEWER INSTALLATION / REPLACEMENT WORK SHALL COMPLY WITH THE DETROIT WATER AND SEWERAGE DEPARTMENT (DWS&D) STANDARDS AND SPECIFICATIONS AND SHALL BE CONSTRUCTED UNDER DIRECT SUPERVISION / INSPECTION OF THE DWS&D AND UNDER DWS&D'S PERMIT. ANY WORK DONE WITHOUT INSPECTION AND / OR PERMIT IS SUBJECT TO DEMAND FOR REMOVAL. ALL INSPECTION COSTS ARE TO BE BORNE BY THE PERMITTEE. THE PERMITTEE SHALL NOTIFY DWS&D 72 HOURS BEFORE BEGINNING ANY WATER MAIN AND WATER SERVICE INSTALLATION WORK.
6. THE CONTRACTOR SHALL USE ALL MEANS NECESSARY TO PROPERLY MOISTEN ALL SURFACES AS REQUIRED TO PREVENT SOILS FROM BECOMING AIRBORNE AND CREATING A NUISANCE TO NEIGHBORING FACILITIES, THE PUBLIC, AND ANY CONCURRENT WORK ACTIVITIES. THE FINAL DETERMINATION OF THE SUCCESS OF THESE DUST CONTROL MEASURES SHALL BE BY THE CITY OF DETROIT AUTHORITIES.
7. ANY SITE DEWATERING NECESSARY TO MAINTAIN A SAFE AND EFFICIENT ENVIRONMENT SHALL BE THE RESPONSIBILITY OF THE CONTRACTOR.
8. ALL WORK SHALL BE EXECUTED AND INSPECTED IN ACCORDANCE WITH ALL LOCAL, STATE AND FEDERAL CODES, RULES, ORDINANCES AND REGULATIONS PERTAINING TO SITE EXCAVATION ACTIVITIES.
9. LOCATIONS OF THE EXISTING, DETROIT WATER AND SEWERAGE DEPARTMENT (DWS&D) WATER MAINS AS SHOWN ON THE DRAWINGS ARE APPROXIMATE ONLY.
10. DWS&D'S STANDARD CONCRETE THRUST BLOCKS SHALL BE PLACED ON ALL FITTINGS, AND OLD THRUST BLOCKS REMOVED, EXCEPT AS NOTED ON THE DRAWINGS. VERTICAL THRUST BLOCKS FOR VERTICAL OFFSETS WILL REQUIRE REINFORCING STEEL 4 ANCHORAGE. REFER TO SHEET C4.40 FOR DWS&D STANDARD DETAILS FOR THRUST BLOCKS AT VERTICAL BENDS. THE CONTRACTOR SHALL PLACE VERTICAL THRUST BLOCKS AT ALL VERTICAL BENDS 22-1/2 DEGREES AND LARGER.
11. NEW WATER MAINS SHOWN ON DRAWINGS SHALL BE DUCTILE IRON PIPE (CLASS B6) OF THE SIZE SHOWN AND BE COVERED WITH A POLYETHYLENE WRAP.
12. THE CONTRACTOR SHALL PROVIDE SHEETING AND BRACING TO PROTECT ADJACENT PAVEMENT, CURBS, SIDEWALKS, PIPELINES, CONDUITS, THE WORK AND PERSONNEL. THE CONTRACTOR SHALL BE TOTALLY RESPONSIBLE FOR ANY AND ALL DAMAGES AND INJURIES RESULTING FROM A FAILURE TO PROVIDE ADEQUATE SHEETING AND BRACING.
13. ALL TRAFFIC SIGNAGE AND PAVEMENT MARKINGS SHALL BE IN ACCORDANCE WITH THE MICHIGAN MANUAL OF UNIFORM TRAFFIC CONTROL DEVICES.
14. COORDINATE ALL EXCAVATION AND ACTIVITIES IN THE VICINITY OF THE GAS PIPELINES WITH DOME PETROLEUM.



BENCHMARKS

BM#20 CITY OF DETROIT MON BOX 10-251A
NORTHEAST CORNER JEFFERSON & POST
ELEV = 109.578

BM#21 CITY OF DETROIT MON BOX 10-351
NORTHEAST CORNER OF JEFFERSON & GREEN
ELEV = 110.03

BM#22 CITY OF DETROIT MON BOX 1-354A
NORTHEAST CORNER OF JEFFERSON & CROSSLEY
ELEV = 108.78

BM#23 SET BY METCO
SET PK IN UTIL. POLE LOCATED ON THE NORTH SIDE
OF PUMP HOUSE
ELEV = 108.27

MONUMENTS HAVE BEEN SET AT ALL PROPERTY CORNERS ALSO.

ISSUE	BY	CHKD	APPD	DATE

DETROIT ECONOMIC DEVELOPMENT CORPORATION
211 WEST FORT STREET - SUITE 900 DETROIT, MICHIGAN 48226
(313) 963-2940 (313) 963-8839 FAX

SCALE: 1" = 200'

DESIGNED BY
CHECKED BY
APPROVED BY



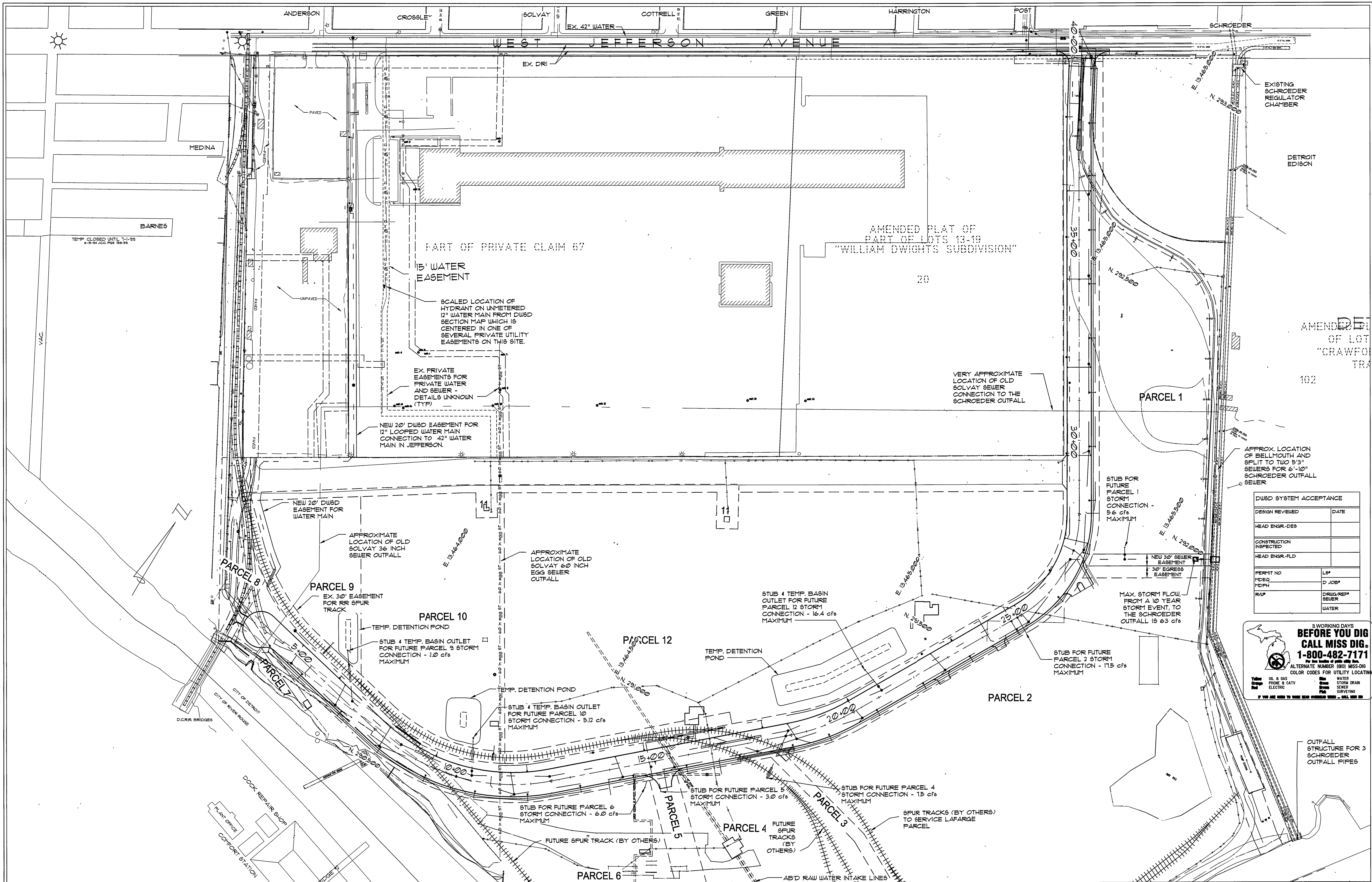
ANGELO IAFRATE
CONSTRUCTION COMPANY
25400 SHERWOOD WARREN, MICHIGAN 48091
(586) 758-1070



TUCKER, YOUNG
JACKSON, TULL, INC.
CONSULTING ENGINEERS PLANNERS
1405 S. LARNED SUITE 200 DETROIT, MICHIGAN 48226
(313) 963-8612 FAX (313) 963-2866

PROJECT: SPRINGWELLS COURT PAVING
SHEET TITLE: SURVEY CONTROL PLAN

DATE: 7-13-04
SHEET NO.: C 1.11



DU&D SYSTEM ACCEPTANCE	
DESIGN REVIEWED	DATE
HEAD ENGR-DES	
CONSTRUCTION INSPECTED	
HEAD ENGR-FLD	
PERMIT NO.	LP#
MDEG	D JOB#
MDPH	
ROP#	DRUG/REP#
	SEWER
	WATER

3 WORKING DAYS
**BEFORE YOU DIG
CALL MISS DIG.**
1-800-482-7171
ALTERNATE NUMBER (800) MISS-DIG
FOR THE LOCATION OF UTILITIES IN THE CITY OF DETROIT

Color Codes for Utility Locations:

Yellow	Oil & Gas	Blue	Water
Orange	Phone & CATV	Green	Storm Drain
Red	Electric	White	Sewer
		Pink	Surveying

IF YOU ARE ASKED TO STOP WORK IMMEDIATELY - CALL 800-482-7171

DETROIT ECONOMIC DEVELOPMENT CORPORATION
211 WEST FORT STREET - SUITE 900 DETROIT, MICHIGAN 48226
(313) 963-2940 (313) 963-8839 FAX

SCALE: 1" = 100'
0 50 100 200 300
SCALE IN FEET

DESIGNED BY
CHECKED BY
APPROVED BY

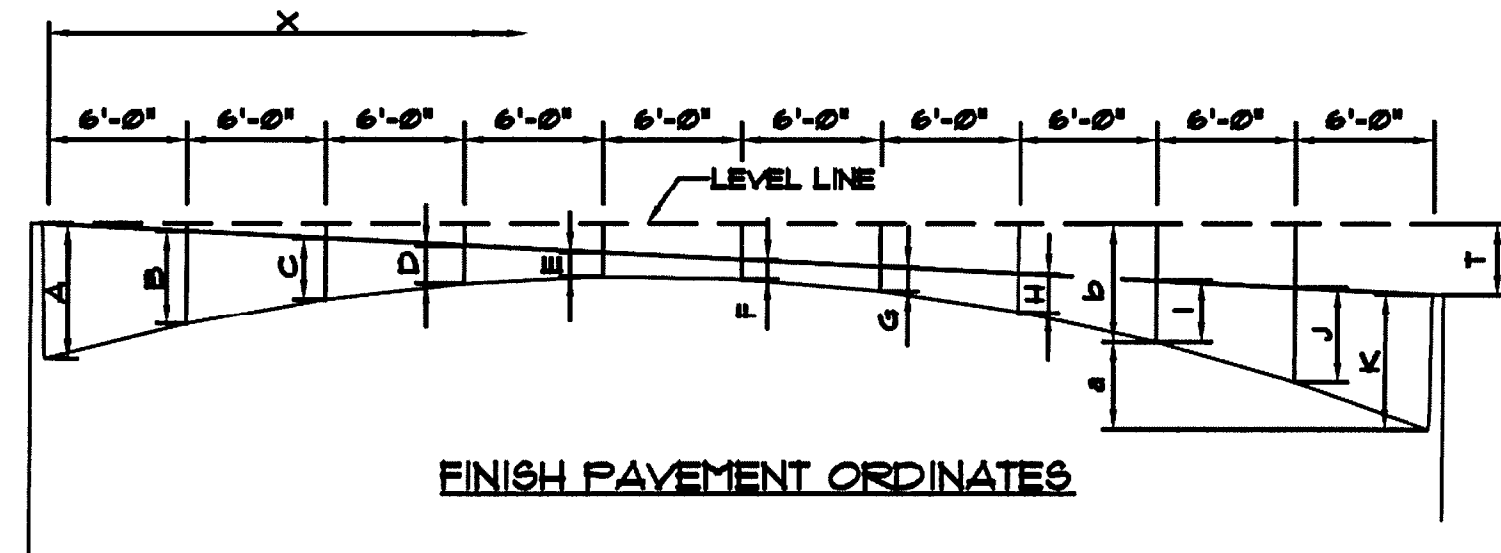
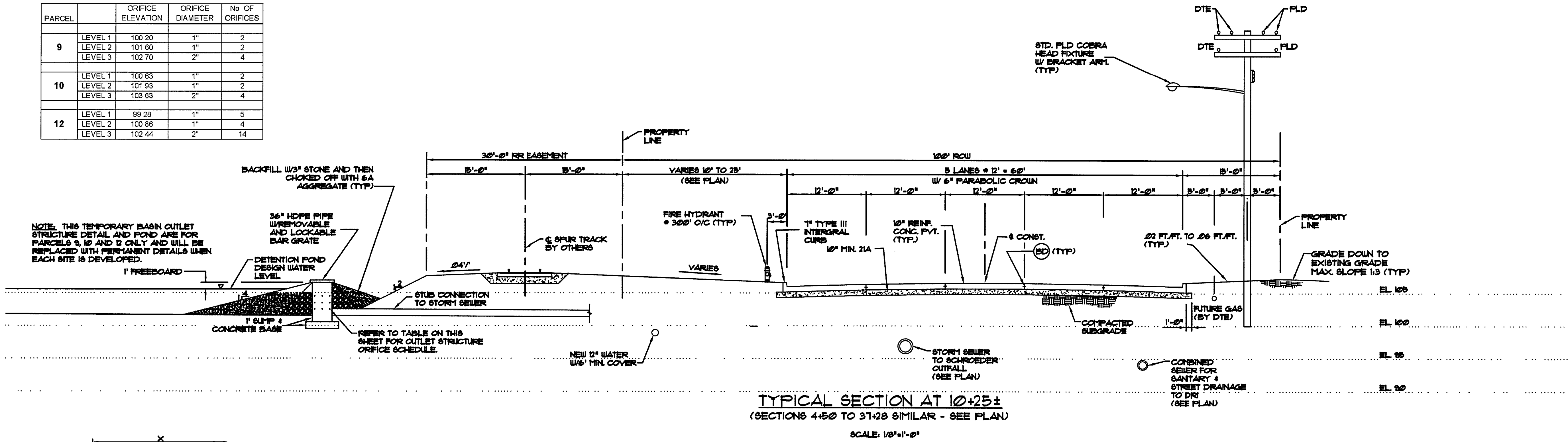
ANGELO IAFRATE CONSTRUCTION COMPANY
28400 SHERWOOD WARREN, MICHIGAN 48091
(586) 756-1070

TUCKER, YOUNG JACKSON, TULL INC.
CONSULTING ENGINEERS PLANNERS
360 E. LARNED SUITE 300 DETROIT, MICHIGAN 48226
(313) 963-6963 FAX (313) 963-7566

PROJECT: **SPRINGWELLS COURT PAVING** DATE: 7-13-04
SHEET TITLE: **SITE PLAN** SHEET NO.: **C 120**

**TEMPORARY STORM WATER PONDS
SCHEDULE OF OUTLET STRUCTURES**

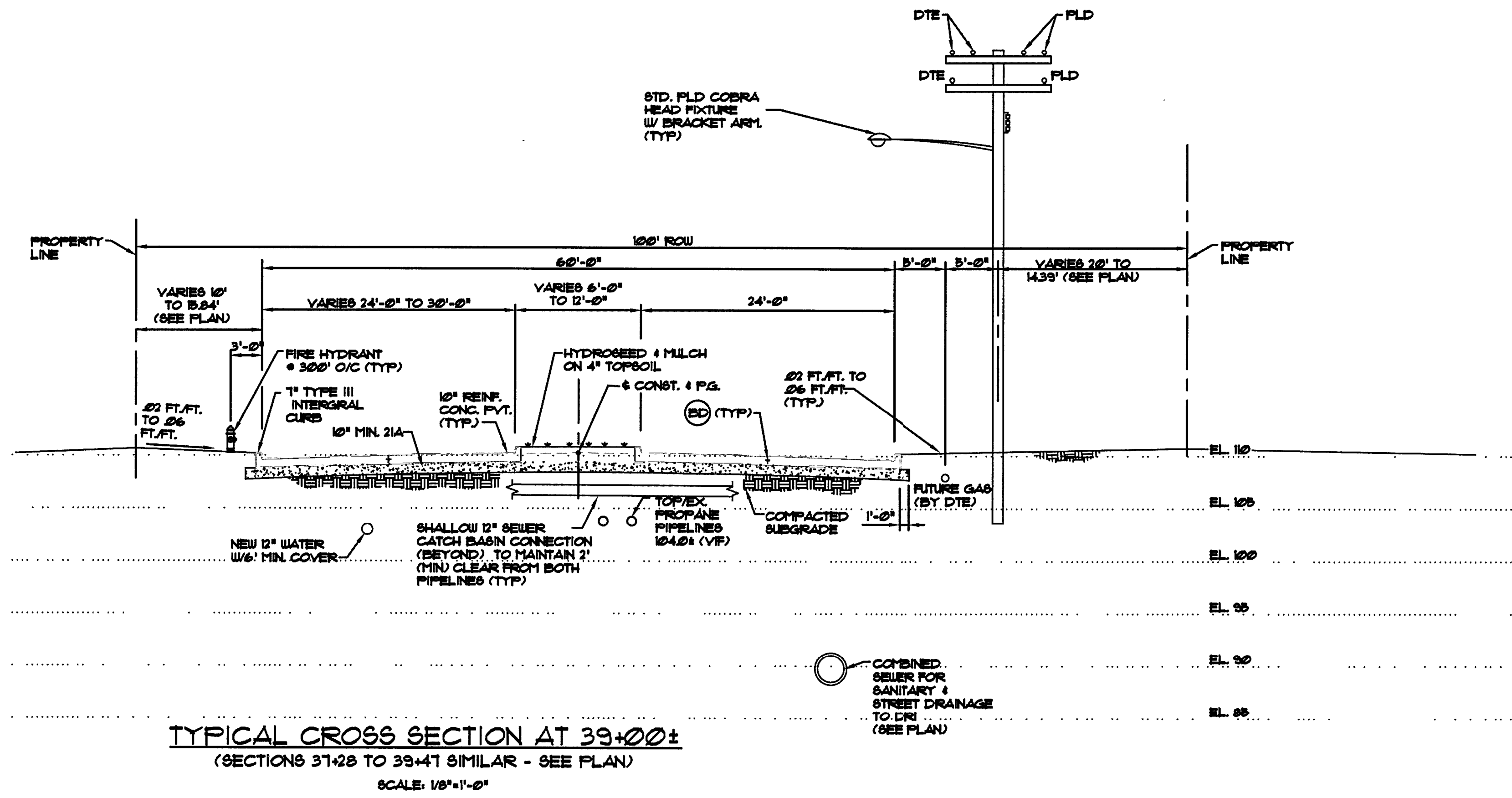
PARCEL		ORIFICE ELEVATION	ORIFICE DIAMETER	No OF ORIFICES
9	LEVEL 1	100.20	1"	2
	LEVEL 2	101.60	1"	2
	LEVEL 3	102.70	2"	4
10	LEVEL 1	100.63	1"	2
	LEVEL 2	101.93	1"	2
	LEVEL 3	103.63	2"	4
12	LEVEL 1	99.28	1"	5
	LEVEL 2	100.86	1"	4
	LEVEL 3	102.44	2"	14



VERTICAL ORDINATES FOR PAVING SECTION (FEET)													
T (CURB OFFSET)	X	0.0		0.1		0.2		0.3		0.4		0.5	
		a	b	a	b	a	b	a	b	a	b	a	b
A (0.583)	0'	0.000	0.583	0.100	0.583	0.200	0.583	0.300	0.583	0.400	0.583	0.500	0.583
B (0.403)	6'	0.180	0.403	0.270	0.413	0.360	0.423	0.450	0.433	0.540	0.443	0.630	0.453
C (0.263)	12'	0.320	0.263	0.400	0.283	0.480	0.303	0.560	0.323	0.640	0.343	0.720	0.363
D (0.163)	18'	0.420	0.163	0.490	0.193	0.560	0.223	0.630	0.253	0.700	0.283	0.770	0.313
E (0.103)	24'	0.480	0.103	0.540	0.143	0.600	0.183	0.660	0.223	0.720	0.263	0.780	0.303
F (0.083)	30'	0.500	0.083	0.550	0.133	0.600	0.183	0.650	0.233	0.700	0.283	0.750	0.333
G (0.103)	36'	0.480	0.103	0.520	0.163	0.560	0.223	0.600	0.283	0.640	0.343	0.680	0.403
H (0.163)	42'	0.420	0.163	0.450	0.233	0.480	0.303	0.510	0.373	0.540	0.443	0.570	0.513
I (0.263)	48'	0.320	0.263	0.340	0.343	0.380	0.423	0.380	0.503	0.400	0.583	0.420	0.663
J (0.403)	54'	0.180	0.403	0.190	0.493	0.200	0.583	0.210	0.673	0.220	0.763	0.230	0.853
K (0.583)	60'	0.000	0.583	0.000	0.683	0.000	0.783	0.000	0.883	0.000	0.983	0.000	1.083

VERTICAL ORDINATES FOR PAVING SECTION (FEET)													
T (CURB OFFSET)	X	0.6		0.7		0.8		0.9		1.0			
		a	b	a	b	a	b	a	b	a	b		
A (0.583)	0'	0.600	0.583	0.700	0.583	0.800	0.583	0.900	0.583	1.000	0.583		
B (0.403)	6'	0.720	0.463	0.810	0.473	0.900	0.483	0.990	0.493	1.080	0.503		
C (0.263)	12'	0.800	0.383	0.880	0.403	0.960	0.423	1.040	0.443	1.120	0.463		
D (0.163)	18'	0.840	0.343	0.910	0.373	0.980	0.403	1.050	0.433	1.120	0.463		
E (0.103)	24'	0.840	0.343	0.900	0.383	0.960	0.423	1.020	0.463	1.080	0.503		
F (0.083)	30'	0.800	0.383	0.850	0.433	0.900	0.483	0.950	0.533	1.000	0.583		
G (0.103)	36'	0.720	0.463	0.760	0.523	0.800	0.583	0.840	0.643	0.880	0.703		
H (0.163)	42'	0.600	0.583	0.630	0.653	0.660	0.723	0.690	0.793	0.720	0.863		
I (0.263)	48'	0.440	0.743	0.460	0.823	0.480	0.903	0.500	0.983	0.520	1.063		
J (0.403)	54'	0.240	0.943	0.250	1.033	0.260	1.123	0.270	1.213	0.280	1.303		
K (0.583)	60'	0.000	1.183	0.000	1.283	0.000	1.383	0.000	1.483	0.000	1.583		

X = Distance from face of high curb
a = Height above low pavement gutter elevation
b = Difference between top of high curb and pavement elevation



SOIL EROSION CONTROL STAGING

THE FOLLOWING STAGING IS INTENDED TO BE A GENERAL METHOD OF CONSTRUCTION. ANY OPERATIONS DESCRIBED HEREIN WHICH DO NOT ADVERSELY AFFECT SUBSEQUENT STAGING OR THE INTENT OF SOIL EROSION AND SEDIMENT CONTROL MAY BE PERFORMED AT THE CONTRACTOR'S CONVENIENCE.

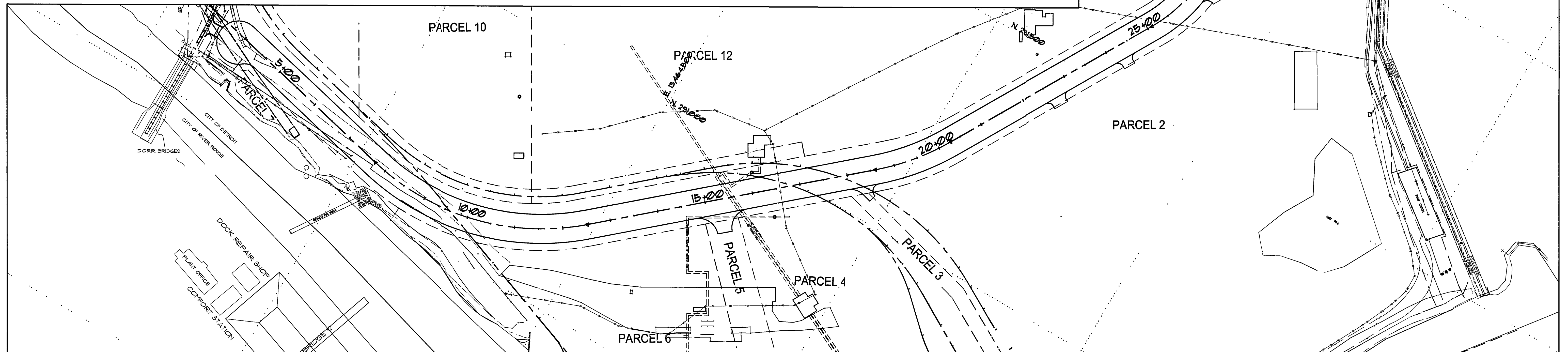
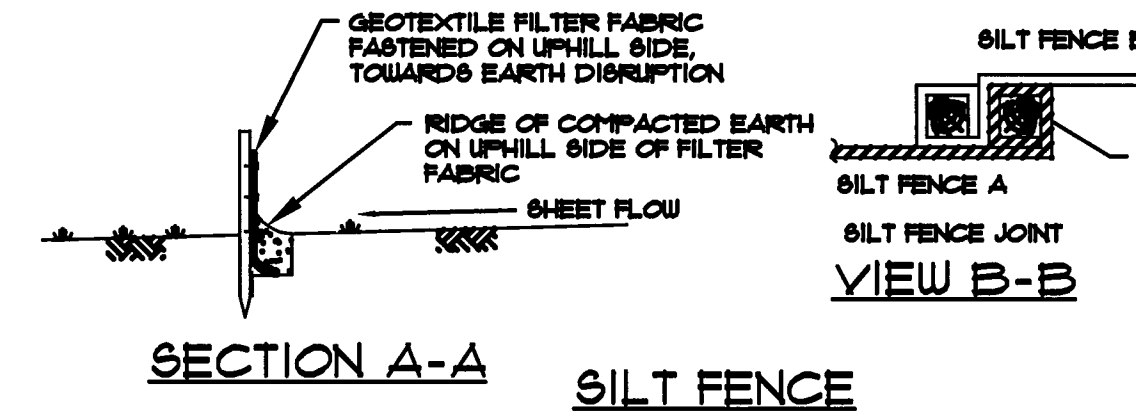
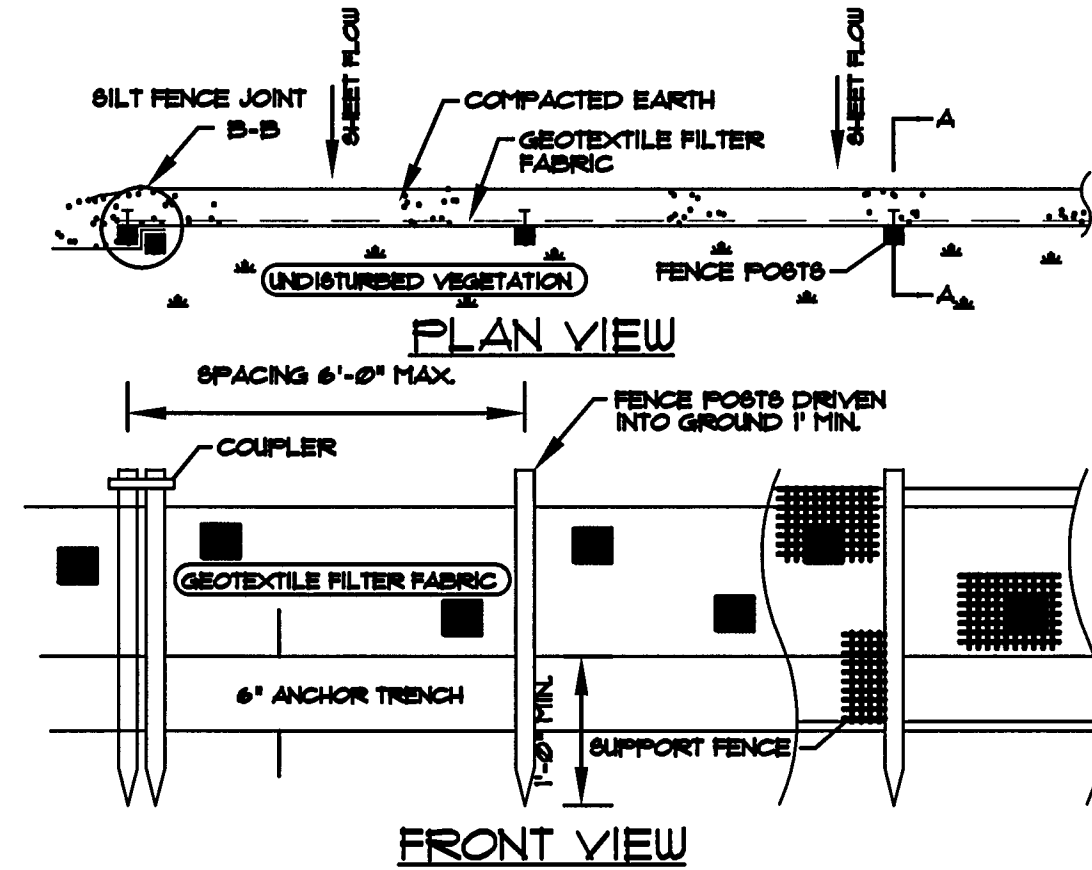
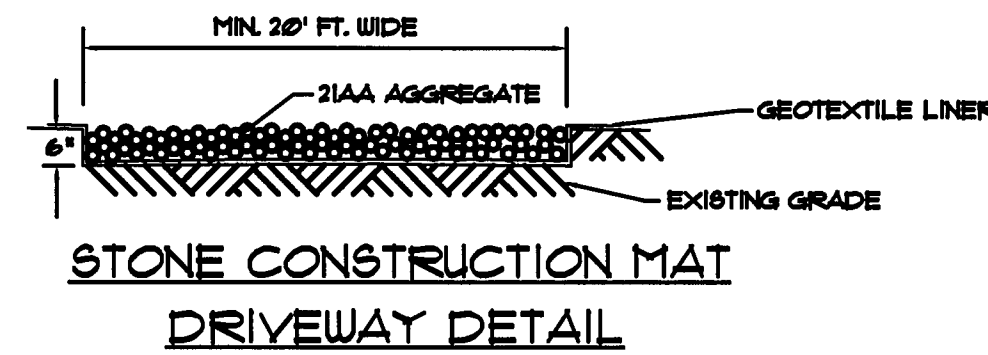
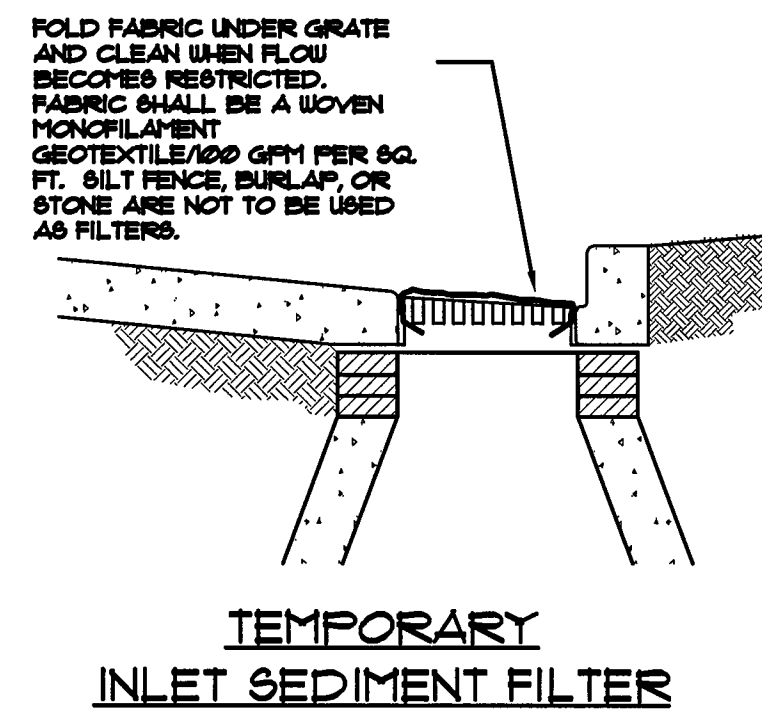
1. INSTALL GEOTEXTILE SILT FENCE ALONG THE PERIMETER OF THE PROPERTY OR CONSTRUCTION AREA. DETAILS ARE ON THIS SHEET.
2. INSTALL SEDIMENT CONTROL MEASURES AT ALL EXISTING DRAINAGE STRUCTURES PRIOR TO THE START OF THE WORK. DETAIL ON THIS SHEET.
3. PROVIDE TEMPORARY SWALES AS REQUIRED TO MINIMIZE SOIL EROSION.
4. PERFORM GRADING OPERATIONS AS REQUIRED.
5. TEMPORARILY MULCH ALL DISTURBED AREAS OR APPLY PERMANENT CONTROL MEASURES WITHIN 15 DAYS AFTER THE EARTH DISRUPTION.
6. ESTABLISH PERMANENT EROSION CONTROL MEASURES SUCH AS SEED AND MULCH, SOD, ETC., AS INDICATED.
7. REMOVE TEMPORARY EROSION CONTROL MEASURES UPON PERMANENT STABILIZATION OF ALL DISTURBED AREAS.

SILT FENCE NOTES

1. SILT FENCE AND FILTER FABRIC MATERIALS SHALL BE PURCHASED IN A CONTINUOUS ROLL. CUT TO THE LENGTH OF THE BARRIER TO AVOID THE USE OF JOINTS.
2. THE HEIGHT OF A SILT FENCE SHALL NOT EXCEED 36 INCHES (HIGHER FENCES MAY IMPOUND VOLUMES OF WATER SUFFICIENT TO CAUSE FAILURE OF THE STRUCTURE).
3. POSTS SHALL BE SPACED A MAXIMUM OF 6 FEET APART AT THE BARRIER LOCATION AND DRIVEN SECURELY INTO THE GROUND (MINIMUM OF 12 INCHES).
4. A TRENCH SHALL BE EXCAVATED APPROXIMATELY 4 INCHES WIDE AND 4 INCHES DEEP FOR THE FILTER FABRIC MATERIAL ALONG THE LINE OF POSTS, UPSLOPE FROM THE FENCE.
5. THE TRENCH SHALL BE BACKFILLED AND THE SOIL COMPACTED OVER THE FILTER MATERIAL.
6. SILT FENCES HAVE THEIR APPLICABILITY LIMITED TO SITUATIONS WHICH ONLY SHEET OR OVERLAND FLOWS ARE EXPECTED.
7. SILT FENCES SHALL BE REMOVED WHEN THEY HAVE SERVED THEIR USEFUL PURPOSE, BUT NOT BEFORE THE UPSLOPE AREA HAS BEEN PERMANENTLY STABILIZED.
8. THE CONTRACTOR SHALL MAINTAIN THE SILT FENCE UNTIL THE UPSLOPE AREA HAS BEEN PERMANENTLY STABILIZED.
9. SILT FENCES SHALL BE INSPECTED IMMEDIATELY AFTER EACH RAINFALL AND AT LEAST DAILY DURING PERIODS OF PROLONGED RAINFALL AND REQUIRED REPAIRS SHALL BE MADE IMMEDIATELY.
10. SHOULD THE FABRIC ON THE SILT FENCE DECOMPOSE OR BECOME INEFFECTIVE PRIOR TO THE END OF THE EXPECTED USABLE LIFE AND THE FENCE IS STILL NECESSARY, THE FABRIC SHALL BE REPLACED PROMPTLY.
11. SEDIMENT DEPOSITS SHOULD BE REMOVED AFTER EACH STORM EVENT. THEY MUST BE REMOVED WHEN DEPOSITS REACH APPROXIMATELY ONE-HALF THE HEIGHT OF THE FENCE.
12. ANY SEDIMENT DEPOSITS REMAINING IN PLACE AFTER THE SILT FENCE IS NO LONGER REQUIRED SHALL BE DRESSED TO CONFORM WITH THE EXISTING GRADE, PREPARED, AND SEED.

EROSION CONTROL GENERAL NOTES

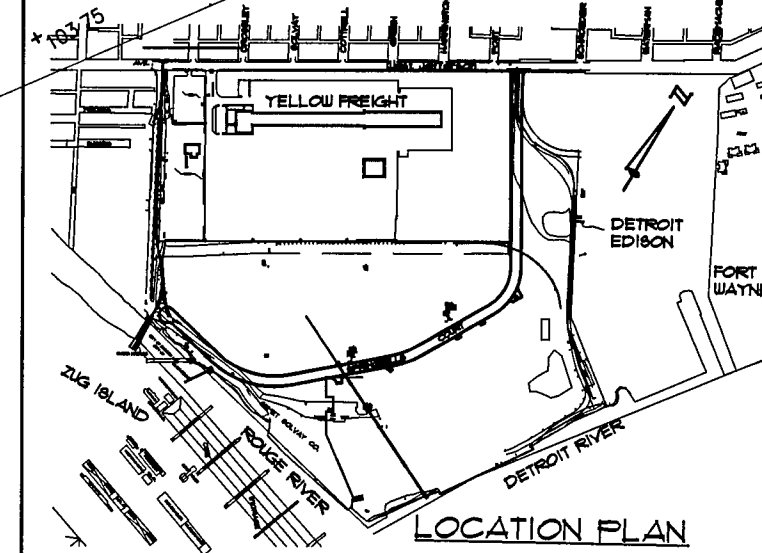
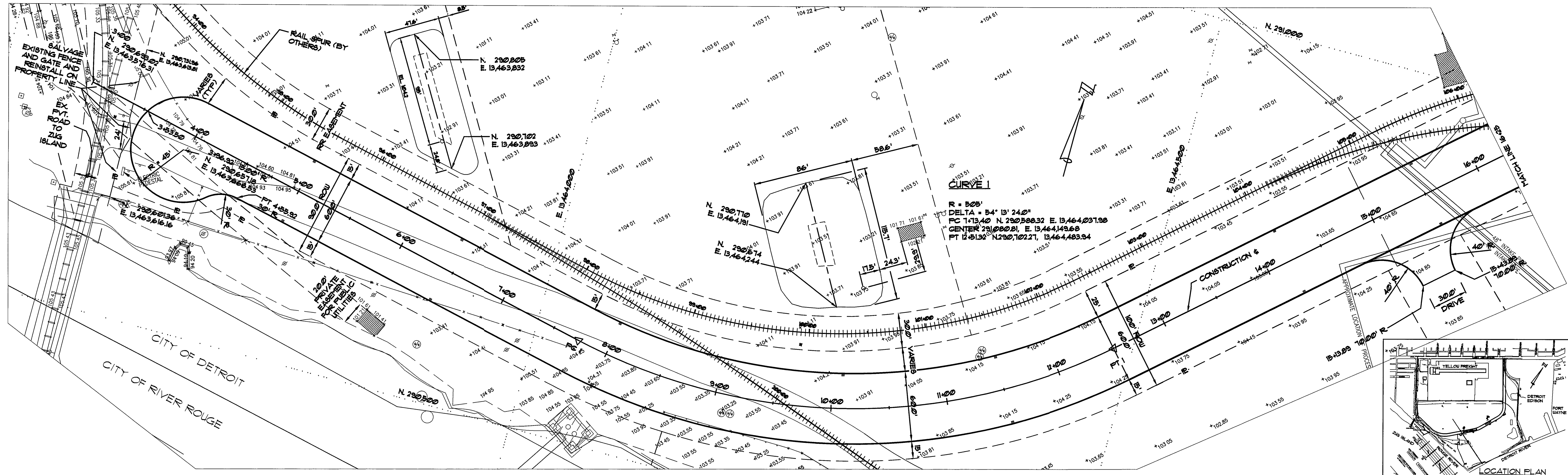
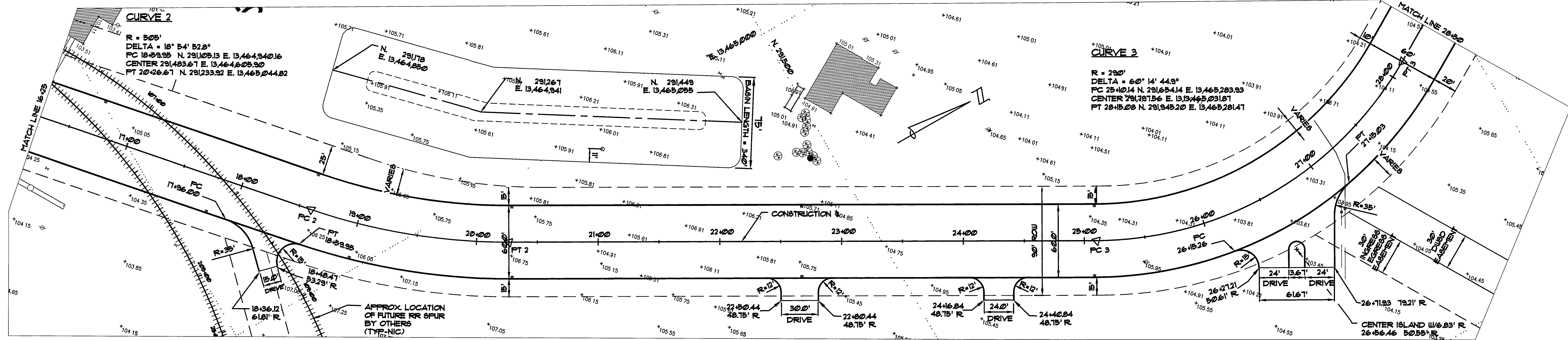
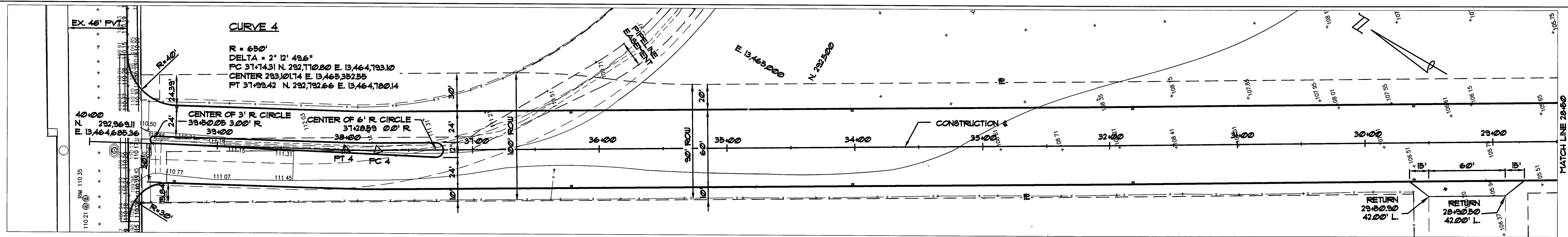
1. ALL PROPOSED WORK SHALL BE IN ACCORDANCE WITH THE SOIL EROSION AND SEDIMENTATION CONTROL PERMIT AND ACT 347 OF THE PUBLIC ACTS OF 1972, AS AMENDED.
2. THE CONTRACTOR SHALL EMPLOY A QUALIFIED INSPECTOR/TECHNICIAN TO REGULARLY INSPECT THE PROJECT EROSION CONTROL MEASURES. THE INSPECTOR/TECHNICIAN SHALL THOROUGHLY INSPECT EVERY 7 DAYS, OR WITHIN 24 HOURS OF A ONE-HALF INCH RAINFALL, SHALL MAINTAIN A PROJECT NOTEBOOK WITH NAMES, DATES, LOCATIONS, AND CORRECTIVE MEASURES. RECORDS SHALL BE MADE AVAILABLE TO THE CITY OR COUNTY INSPECTORS UPON REQUEST.
3. THE SILT FENCE SHALL REMAIN IN PLACE UNTIL COMPLETION OF THE PROJECT. ALL FLOWS SHALL BE SILT-FREE PRIOR TO DISCHARGE. DISCHARGE SHALL BE DIRECTED TO STABILIZED SITES SUCH AS STORM SEWERS OR EXISTING GRASSED DRAINAGE WAYS AND NOT ONTO EXPOSED SOILED OR ANY OTHER SITE WHERE FLOWS COULD CAUSE EROSION.
4. PUMPS TO DE-WATER EXCAVATIONS SHALL BE EQUIPPED WITH A FILTER TRAP INLET SCREEN. WHEN SO EQUIPPED, PUMP DISCHARGE TO AN EXISTING SEWER MANHOLE IS ACCEPTABLE.
5. SEDIMENT CONTROL PRACTICES SHALL BE FUNCTIONAL THROUGHOUT PHASES OF EARTH DISTURBING ACTIVITY AND SHALL CONTINUE TO FUNCTION UNTIL THE DISTURBED AREA IS PERMANENTLY RE-STABILIZED.
6. INLET FILTERS SHALL BE INSTALLED AT ALL INLETS AND MANHOLES, EXCEPT INLET STRUCTURES IN THE NEW PAVEMENT SURFACE. FILTERS TO REMAIN IN PLACE UNTIL NO LONGER NEEDED.
7. DISTURBED AREAS WITHIN THE SITE NOT PAVED OR OTHERWISE TO BE LEFT UNDISTURBED FOR 30 DAYS OR MORE SHALL BE TEMPORARILY SEED, FERTILIZED AND MULCHED, TO BE APPLIED WITHIN NO MORE THAN SEVEN (7) DAYS AFTER THE COMPLETION OF EARTHWORK OPERATIONS.
8. SEDIMENT CAUSED BY ACCELERATED SOIL EROSION SHALL BE REMOVED FROM RUNOFF WATER BEFORE IT LEAVES THE SITE.
9. MEASURES SHALL BE TAKEN TO PREVENT SOIL TRANSPORT ONTO SURFACES WHERE RUNOFF IS NOT CHECKED BY SEDIMENT CONTROLS, OR ONTO PUBLIC ROADS. WHERE SOIL IS TRANSPORTED ONTO A PUBLIC ROAD SURFACE, THE ROAD SHALL BE CLEANED THOROUGHLY AT THE END OF EACH DAY, OR MORE FREQUENTLY AS NECESSARY. SOIL SHALL BE REMOVED FROM PAVED SURFACES BY SHOVELING OR SWEEPING. STREET WASHING SHALL BE ALLOWED ONLY AFTER MOST SEDIMENT HAS BEEN REMOVED BY SHOVELING OR SWEEPING.
10. THE ABOVE SPECIFIED EROSION CONTROL STANDARDS ARE GENERAL GUIDELINES AND SHALL NOT LIMIT THE RIGHT OF THE CITY OR THE COUNTY TO IMPOSE, AT ANY TIME, ADDITIONAL, MORE STRINGENT REQUIREMENTS, NOR SHALL THE STANDARDS LIMIT THE RIGHT OF THE CITY OR THE COUNTY TO WAIVE, IN WRITING, INDIVIDUAL REQUIREMENTS.
11. THE CONTRACTOR SHALL COORDINATE HIS WORK WITH OTHER CONTRACTORS.



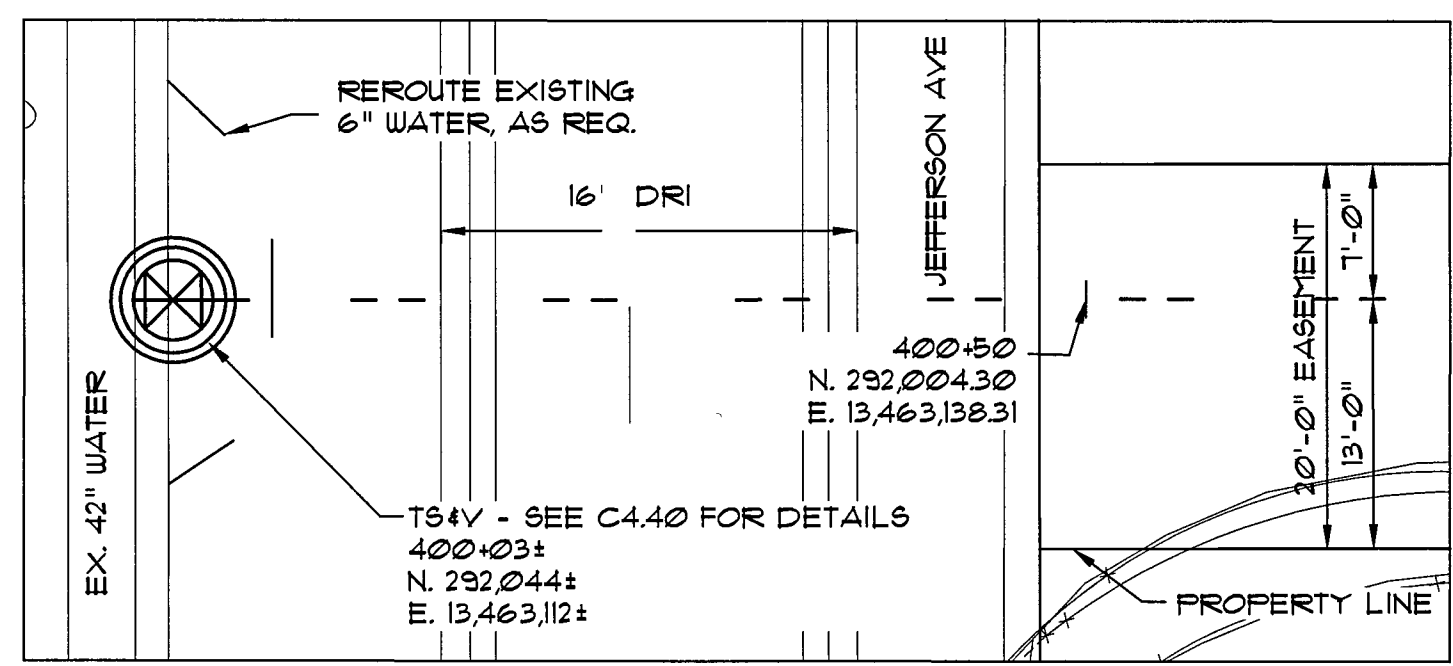
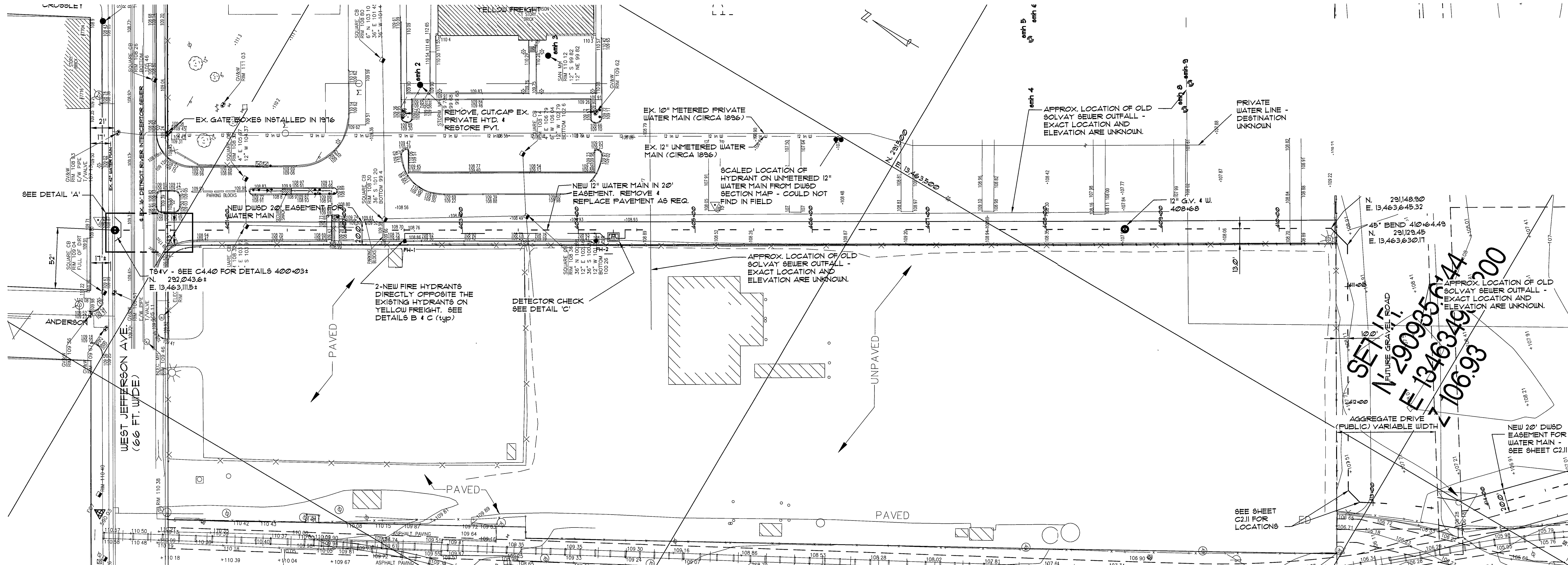
OF 3-19 DIVISION"

AMENDED OF LC "DRAWN T 102

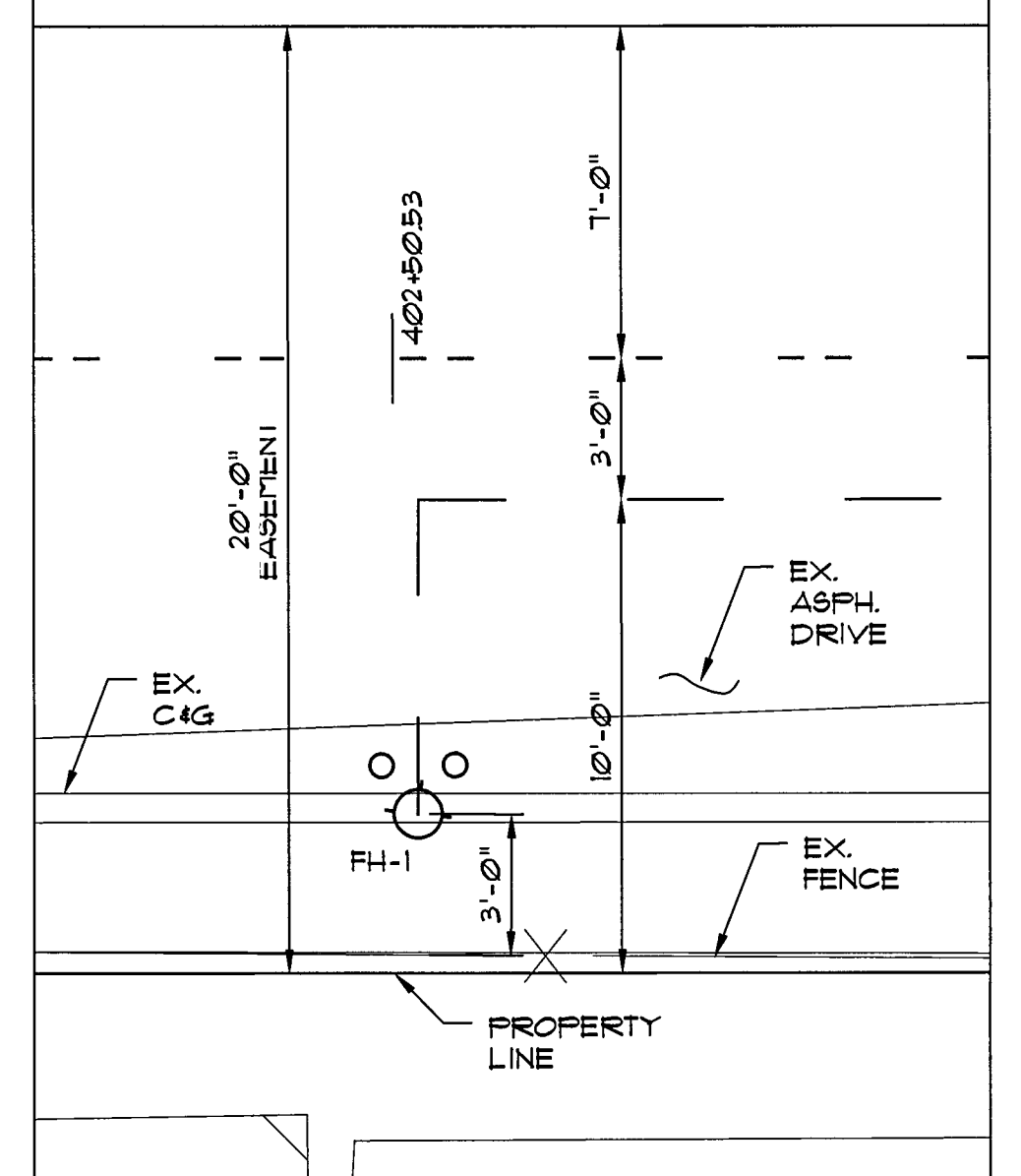
DETROIT ECONOMIC DEVELOPMENT CORPORATION 211 WEST FORT STREET - SUITE 900 DETROIT, MICHIGAN 48226 (313) 963-2940 (313) 963-8839 FAX				SCALE: 1" = 100' 0 50 100 200 300 SCALE IN FEET		DESIGNED BY CHECKED BY APPROVED BY		ANGELO IAFRATE CONSTRUCTION COMPANY 28400 SHERWOOD WARREN, MICHIGAN 48091 (588) 758-1070		TUCKER, YOUNG JACKSON, TULL INC. CONSULTING ENGINEERS PLANNERS 1845 BLAINE RD DETROIT, MICHIGAN 48224 (313) 963-8840 FAX (313) 963-2886		PROJECT: SPRINGWELLS COURT PAVING SHEET TITLE: SOIL EROSION PLAN SHEET NO.: C 1.40		DATE: 1-13-04	
--	--	--	--	---	--	--	--	---	--	---	--	---	--	----------------------	--



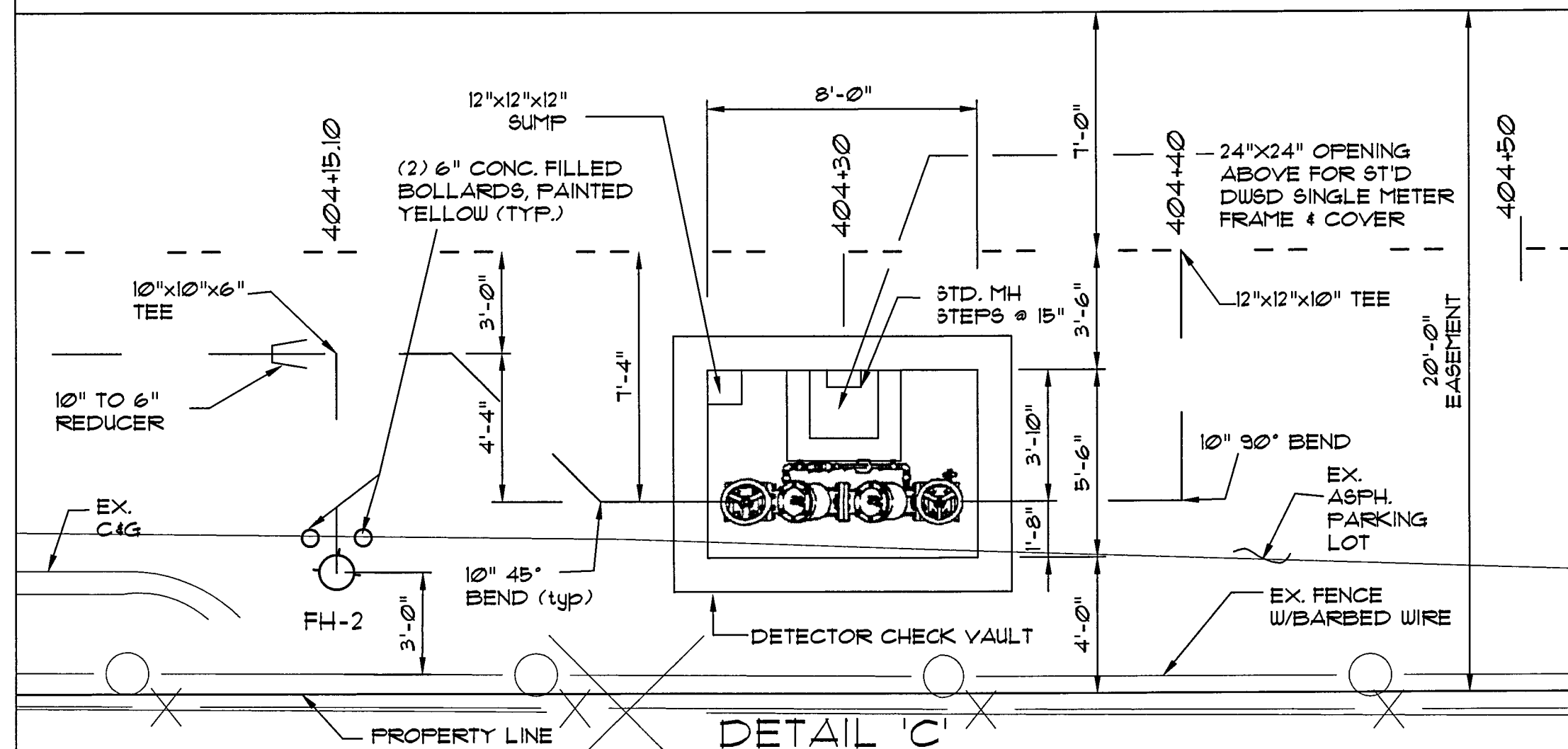
DETROIT ECONOMIC DEVELOPMENT CORPORATION 211 WEST FORT STREET - SUITE 900 (313) 963-2940				DETROIT, MICHIGAN 48226 (313) 963-8839 FAX		SCALE: 1" = 40' 0 10 20 40 80 120 SCALE IN FEET		DESIGNED BY CHECKED BY APPROVED BY		 ANGELO IAFRATE CONSTRUCTION COMPANY 25400 SHERWOOD WARREN, MICHIGAN 48091 (588) 758-1070		 TUCKER, YOUNG JACKSON, TULL INC. CONSULTING ENGINEERS PLANNERS 845 N. LANSING SUITE 300 DETROIT, MICHIGAN 48226 (313) 963-8839 FAX (313) 963-7864		PROJECT: SPRINGWELLS COURT PAVING SHEET TITLE: ALIGNMENT PLAN		DATE: 7-13-04 SHEET NO.: C150	
---	--	--	--	---	--	---	--	--	--	---	--	---	--	--	--	--	--



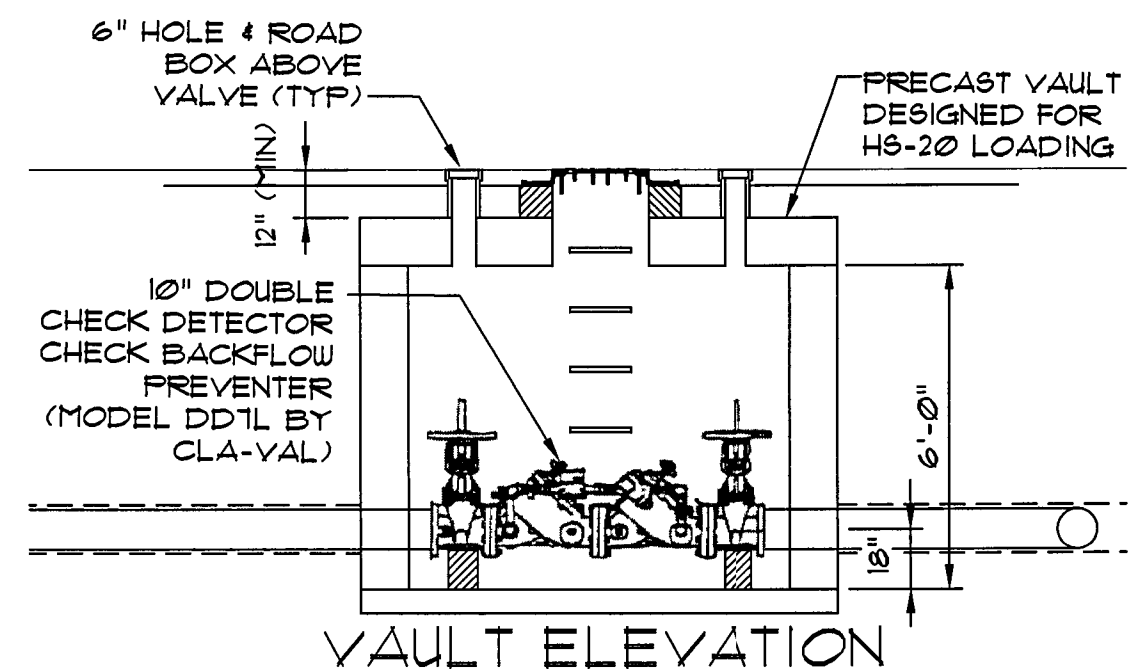
DETAIL 'A'
1" = 10'-0"



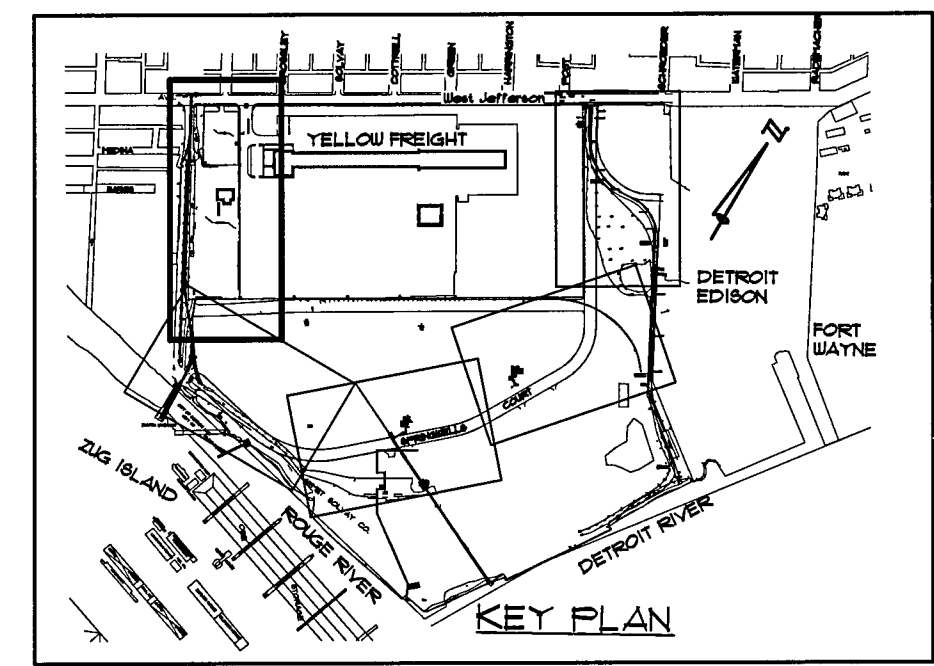
DETAIL 'B'
1/4" = 1'-0"



DETAIL 'C'
1/4" = 1'-0"



VAULT ELEVATION
1/4" = 1'-0"



KEY PLAN

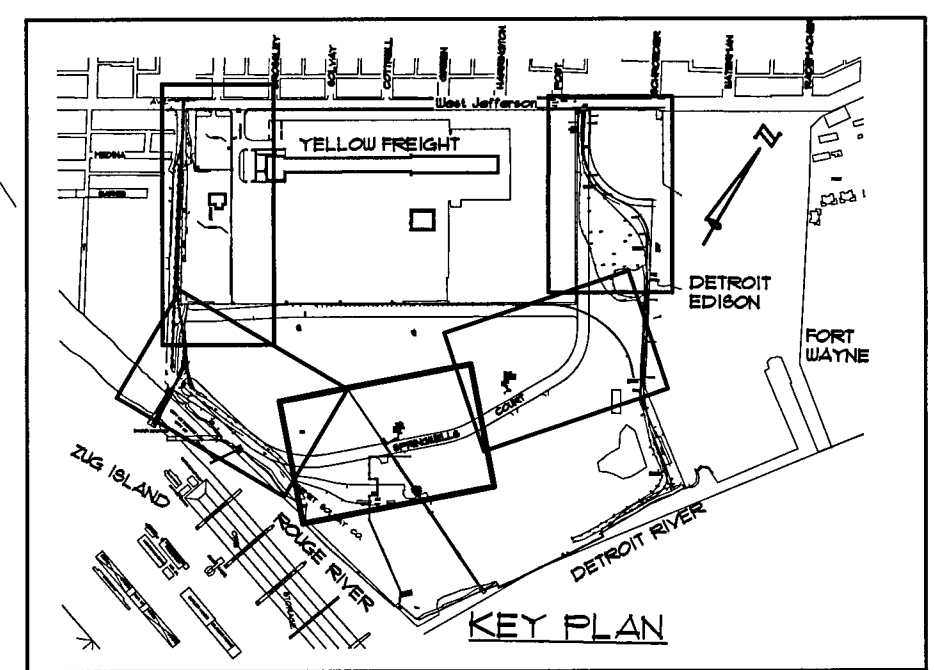
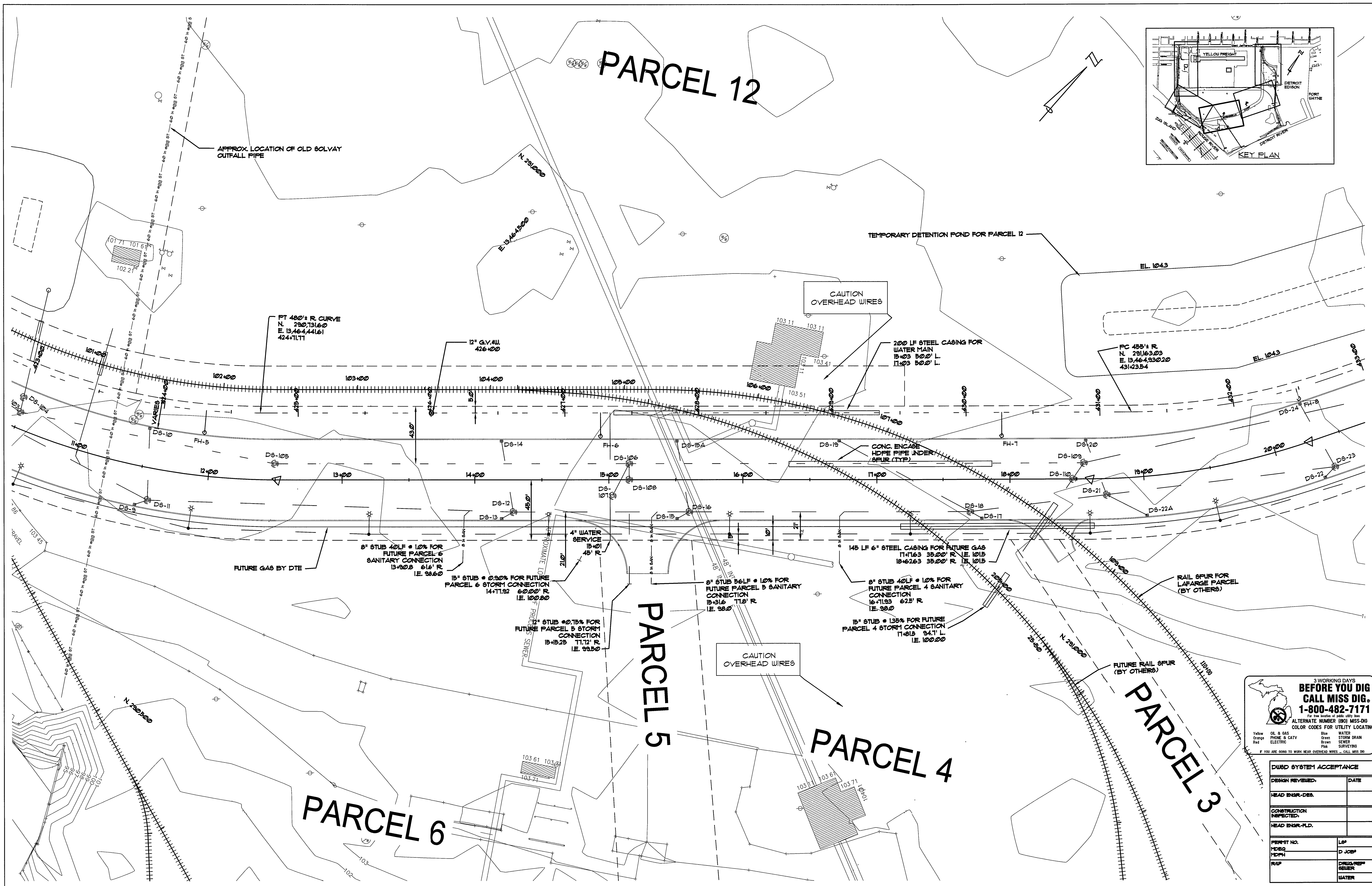
N 292043.6
 E 13463.1115
 N 292044.3
 E 13463.112

N 292043.6
 E 13463.1115
 N 292044.3
 E 13463.112

N 292043.6
 E 13463.1115
 N 292044.3
 E 13463.112

DWSD SYSTEM ACCEPTANCE	
DESIGN REVIEWED	DATE
HEAD ENGR-DES	
CONSTRUCTION INSPECTED	
HEAD ENGR-HLD	
PERMIT NO	LS#
HDG	D JOB#
MDPH	
FR/SP	DRUG/REP#
	SEWER

3 WORKING DAYS
**BEFORE YOU DIG
 CALL MISS DIG.**
1-800-482-7171
For the location of 400 MISS DIG
 ALTERNATE NUMBER (800) MISS-DIG
 COLOR CODES FOR UTILITY LOCATING
 Yellow: OIL & GAS
 Orange: PHONE & CATV
 Red: ELECTRIC
 Blue: WATER
 Green: STORM DRAIN
 Brown: SEWER
 Pink: SURVEYING
IF YOU ARE GOING TO WORK NEAR OVERHEAD WIRES - CALL MISS DIG



3 WORKING DAYS BEFORE YOU DIG CALL MISS DIG. 1-800-482-7171
 For the location of public utility lines
 ALTERNATE NUMBER (800) MISS-DIG
 COLOR CODES FOR UTILITY LOCATING

Yellow	OIL & GAS	Blue	WATER
Orange	PHONE & CATV	Green	STORM DRAIN
Red	ELECTRIC	Brown	SEWER
		Pink	SURVEYING
		White	OTHER

IF YOU ARE GOING TO WORK NEAR OVERHEAD WIRES - CALL MISS DIG

DESIGN REVIEWED:		DATE
CONSTRUCTION INSPECTED:		DATE
PERMIT NO.	LUP	
MDAQ	D JOB#	
MDPH		
RUP		

ISSUE	BY	CHKD	APPD	DATE

DETROIT ECONOMIC DEVELOPMENT CORPORATION
 211 WEST FORT STREET - SUITE 900
 DETROIT, MICHIGAN 48226
 (313) 963-2940 (313) 963-8839 FAX

SCALE: 1" = 30'
 0 10 20 30 60 90
 SCALE IN FEET

DESIGNED BY
 CHECKED BY
 APPROVED BY

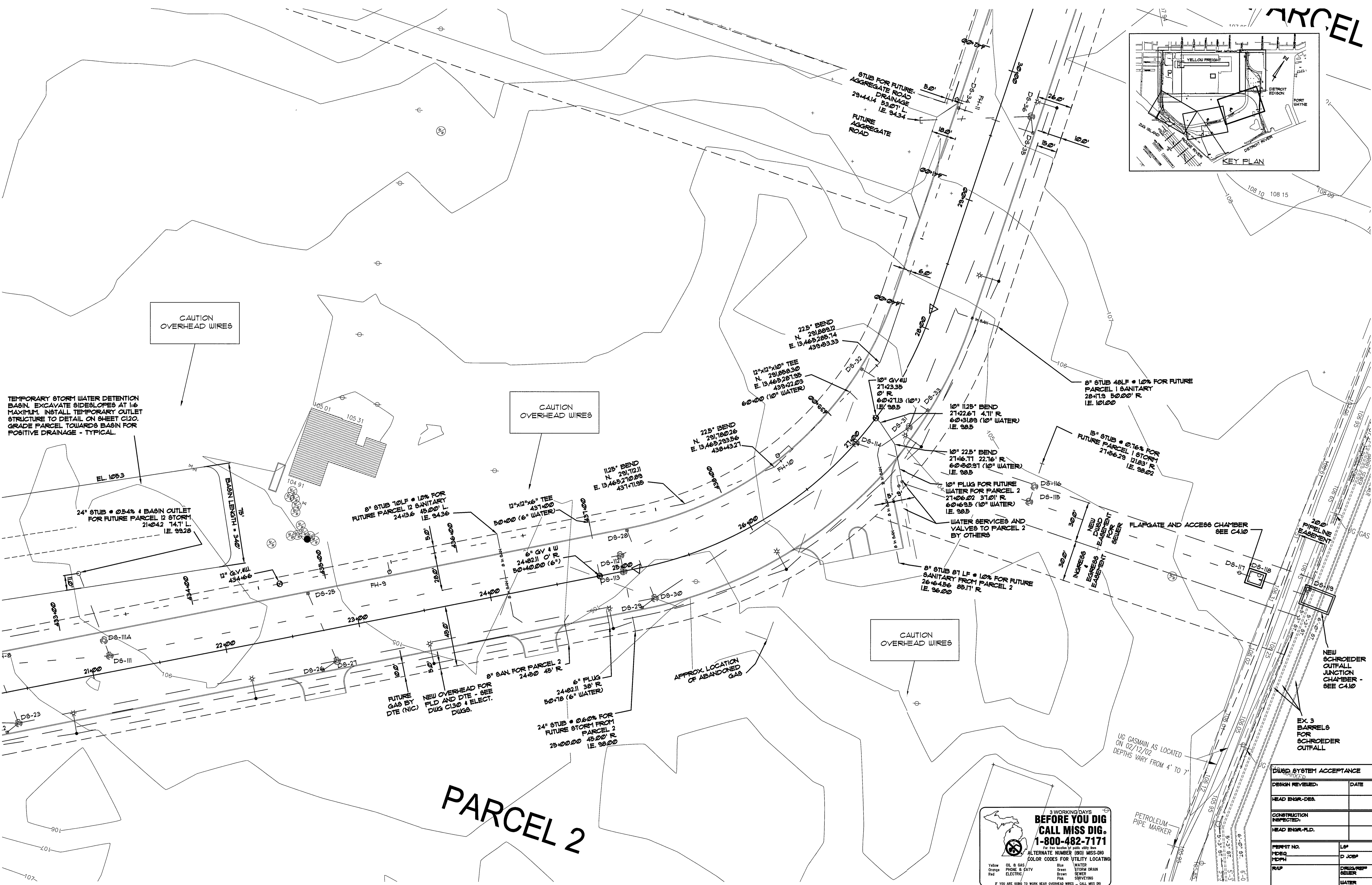
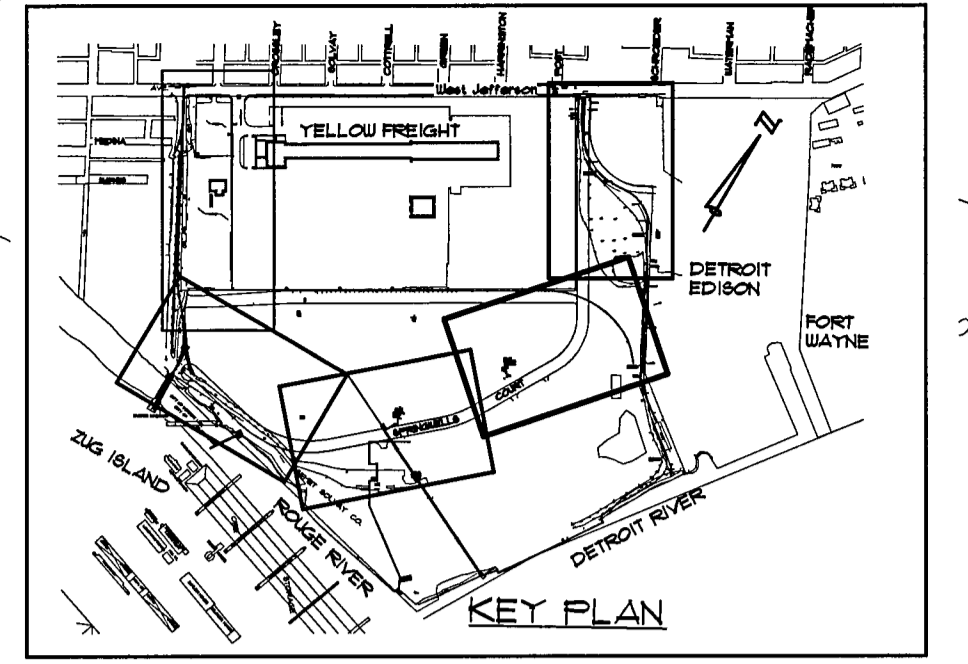
ANGLO IAFRATE CONSTRUCTION COMPANY
 28400 SHERWOOD WARREN, MICHIGAN 48091
 (588) 756-1070

TUCKER, YOUNG JACKSON, TULL INC.
 CONSULTING ENGINEERS PLANNERS
 345 E. LARNED SUITE 300 DETROIT, MICHIGAN 48226
 (313) 963-8663 FAX (313) 963-2866

PROJECT: SPRINGWELLS COURT PAVING
 SHEET TITLE: UTILITY PLAN 11+00 TO 20+50

DATE: 7-13-04
 SHEET NO.: C2.12

PARCEL



TEMPORARY STORM WATER DETENTION BASIN. EXCAVATE SIDESLOPES AT 1:6 MAXIMUM. INSTALL TEMPORARY OUTLET STRUCTURE TO DETAIL ON SHEET C120. GRADE PARCEL TOWARDS BASIN FOR POSITIVE DRAINAGE - TYPICAL.

CAUTION OVERHEAD WIRES

CAUTION OVERHEAD WIRES

CAUTION OVERHEAD WIRES

PARCEL 2

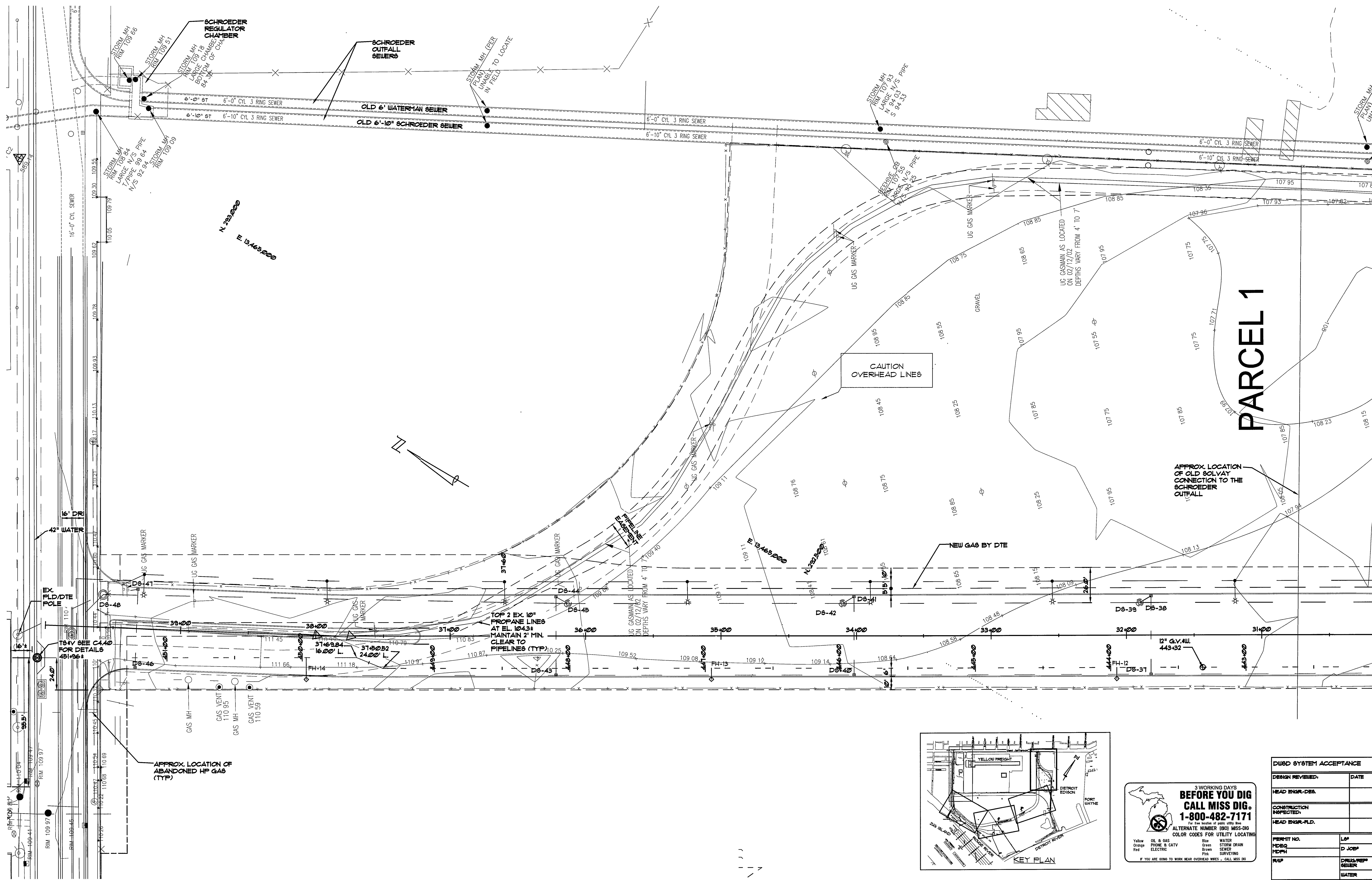
3 WORKING DAYS BEFORE YOU DIG CALL MISS DIG. 1-800-482-7171

For the location of public utility lines ALTERNATE NUMBER (800) MISS-DIG COLOR CODES FOR UTILITY LOCATING

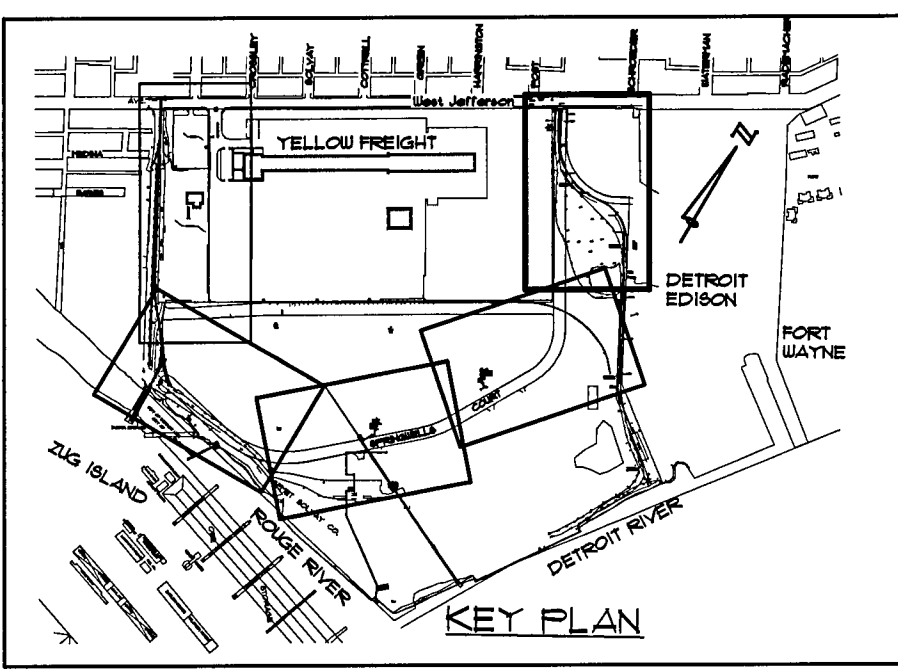
Yellow	OL & GAS	Blue	WATER
Orange	PHONE & CATV	Green	STORM DRAIN
Red	ELECTRIC	Brown	SEWER
		Pink	SURVEYING

IF YOU ARE GOING TO WORK NEAR OVERHEAD WIRES - CALL MISS DIG

DESIGN SYSTEM ACCEPTANCE	
DESIGN REVIEWED:	DATE
HEAD ENGR.-DES.	
CONSTRUCTION INSPECTED:	
HEAD ENGR.-FLD.	
PERMIT NO.	LP#
MEP#	D JOB#
TRUP	DRUG/REP#
	WATER



PARCEL 1



3 WORKING DAYS BEFORE YOU DIG CALL MISS DIG. 1-800-482-7171
 For the State of Michigan
 ALTERNATE NUMBER (800) MISS-DIG
 COLOR CODES FOR UTILITY LOCATING
 Yellow OIL & GAS Blue WATER
 Orange PHONE & CATV Green STORM DRAIN
 Red ELECTRIC Pink SEWER
 Pink SURVEYING
 IF YOU ARE GOING TO WORK NEAR OVERHEAD WIRES - CALL MISS DIG

DU/SO SYSTEM ACCEPTANCE	
DESIGN REVIEWED:	DATE
HEAD ENGR.-DEA.	
CONSTRUCTION INSPECTED:	
HEAD ENGR.-FLD.	
PERMIT NO.	L/P
HD/EG	D JOB
MD/PH	DRUG/REP
RUP	SEWER
	WATER

ISSUE	BY	CHK'D	APP'D	DATE

DETROIT ECONOMIC DEVELOPMENT CORPORATION
 211 WEST FORT STREET - SUITE 900
 (313) 963-2940
 DETROIT, MICHIGAN 48226
 (313) 963-8839 FAX

SCALE: 1" = 30'
 0 10 20 30 60 90
 SCALE IN FEET

DESIGNED BY
 CHECKED BY
 APPROVED BY

ANGELO IAFRATE CONSTRUCTION COMPANY
 28400 SHERWOOD WARREN, MICHIGAN 48091
 (588) 758-1070

TUCKER, YOUNG JACKSON, TULL, INC.
 CONSULTING ENGINEERS PLANNERS
 845 E. LANSING DETROIT, MICHIGAN 48226
 (313) 963-6912 FAX (313) 963-2966

PROJECT: **SPRINGWELLS COURT PAVING**
 SHEET TITLE: **UTILITY PLAN 30+00 to Jefferson**

DATE: **1-13-04**
 SHEET NO.: **C2.14**