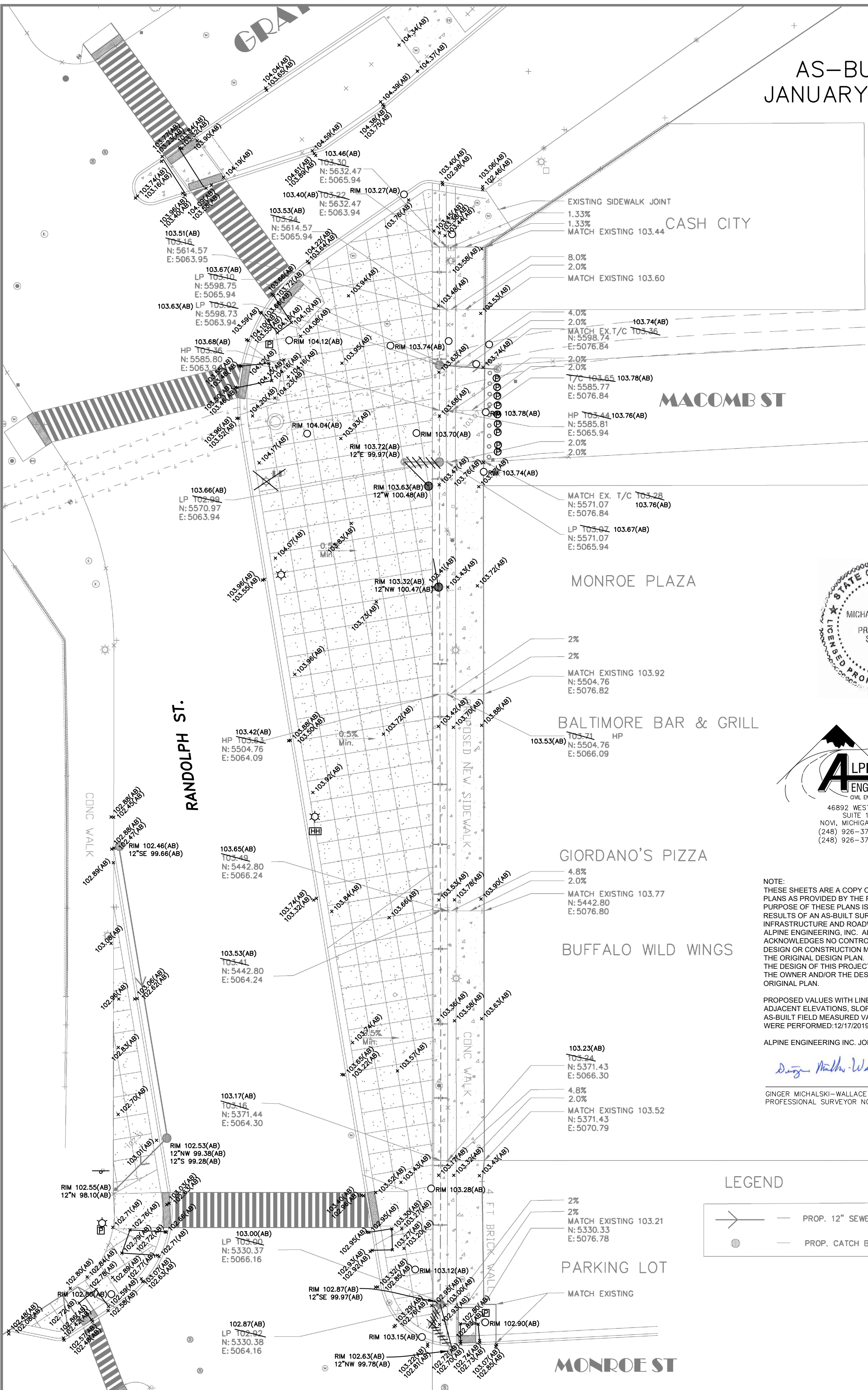


AS-BUILT
JANUARY 2020



ALPINE ENGINEERING, INC.
CIVIL ENGINEERS & LAND SURVEYORS
46892 WEST ROAD
SUITE 109
NOV, MICHIGAN 48377
(248) 926-3701 (BUS)
(248) 926-3765 (FAX)

NOTE:
THESE SHEETS ARE A COPY OF THE DETAILED ENGINEERING PLANS AS PROVIDED BY THE PROJECT OWNER. THE SOLE PURPOSE OF THESE PLANS IS FOR ILLUSTRATION OF THE RESULTS OF AN AS-BUILT SURVEY OF THE UTILITY INFRASTRUCTURE AND ROADWAY AS COMPLETED BY ALPINE ENGINEERING, INC. ALPINE ENGINEERING, INC. ACKNOWLEDGES NO CONTROL OR RESPONSIBILITY FOR THE DESIGN OR CONSTRUCTION METHODS AS ILLUSTRATED ON THE ORIGINAL DESIGN PLAN. ANY QUESTIONS REGARDING THE DESIGN OF THIS PROJECT SHOULD BE DIRECTED TO THE OWNER AND/OR THE DESIGN ENGINEER LISTED ON THE ORIGINAL PLAN.

PROPOSED VALUES WITH LINE STRIKETHROUGH AND ADJACENT ELEVATIONS, SLOPES, AND DISTANCES ARE AS-BUILT FIELD MEASURED VALUES. FIELD MEASUREMENTS WERE PERFORMED: 12/17/2019.

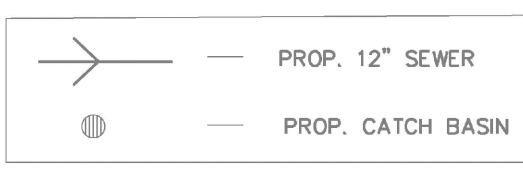
ALPINE ENGINEERING INC. JOB # 19-400

Dan Michalski-Wallace

GINGER MICHALSKI-WALLACE
PROFESSIONAL SURVEYOR NO. 47964

1-21-2020
DATE

LEGEND



GSD
GENERAL SERVICES DEPARTMENT
LANDSCAPE DESIGN UNIT
18100 MEYERS RD, UPPER LEVEL
DETROIT, MICHIGAN 48226
(313) 628-0918 Phone
(313) 628-0915 Fax

PREPARED BY:
LANDSCAPE DESIGN UNIT
DRAWN BY: SA DATE: 09/16/2019
CHECKED BY: TK/LATS/AHS DATE:
APPROVED BY: L. ARAKELOV / AHS

SHEET TITLE:
GRADING & DRAINAGE PLAN

PROJECT:
RANDOLPH AND GRATIOT PLAZA

N
SCALE:
1" = 24'-0"

SHEET NO. 7