

**BENCH MARK INFORMATION**

BM #1 = CHISEL MARK ON SIDE WALK E. RANDOLPH 40' NORTH BATES ST. =100 FT

BM #2 = CHISEL MARK ON SIDE WALK E. RANDOLPH 29' NORTH FARMER ST. ST. =97.21 FT

**HORIZONTAL CONTROL POINTS**

1- SURVEY CONTROL TRAVERSE POINT CP#1:  
NORTHING (Y) = 5000, EASTING (X) = 5000  
Chisel 'x' mark on sidewalk, 40 ft NW corner Bates and Randolph

2- SURVEY CONTROL TRAVERSE POINT CP#2:  
NORTHING (Y) = 4790.11, EASTING (X) = 5000  
Chisel 'x' mark on sidewalk, 29 ft NW corner Farmers and Randolph.

3- SURVEY CONTROL TRAVERSE POINT #350:  
NORTHING (Y) = 5686.88, EASTING (X) = 4960.93  
Chisel 'x' mark on sidewalk, NE corner Broadway and Gratiot

**NOTE:**

- FOR TRAFFIC SIGNALS REMOVAL/RELOCATION SEE TRAFFIC ENGINEERING PLANS
- FOR GENERAL NOTES SEE MDOT PLANS

**GSD**  
CITY OF DETROIT  
GENERAL SERVICES DEPARTMENT  
"Making Detroit to the Next Leap"

GENERAL SERVICES DEPARTMENT  
LANDSCAPE DESIGN UNIT  
18100 MEYERS RD, UPPER LEVEL  
DETROIT, MICHIGAN 48226  
(313) 628-0918 Phone  
(313) 628-0915 Fax

**PREPARED BY:**  
LANDSCAPE DESIGN UNIT

**DRAWN BY:** SA      **DATE:** 09/16/2019

**CHECKED BY:** TK/LATS/AHS      **DATE:**

**APPROVED BY:** L. ARAKELOV / AHS

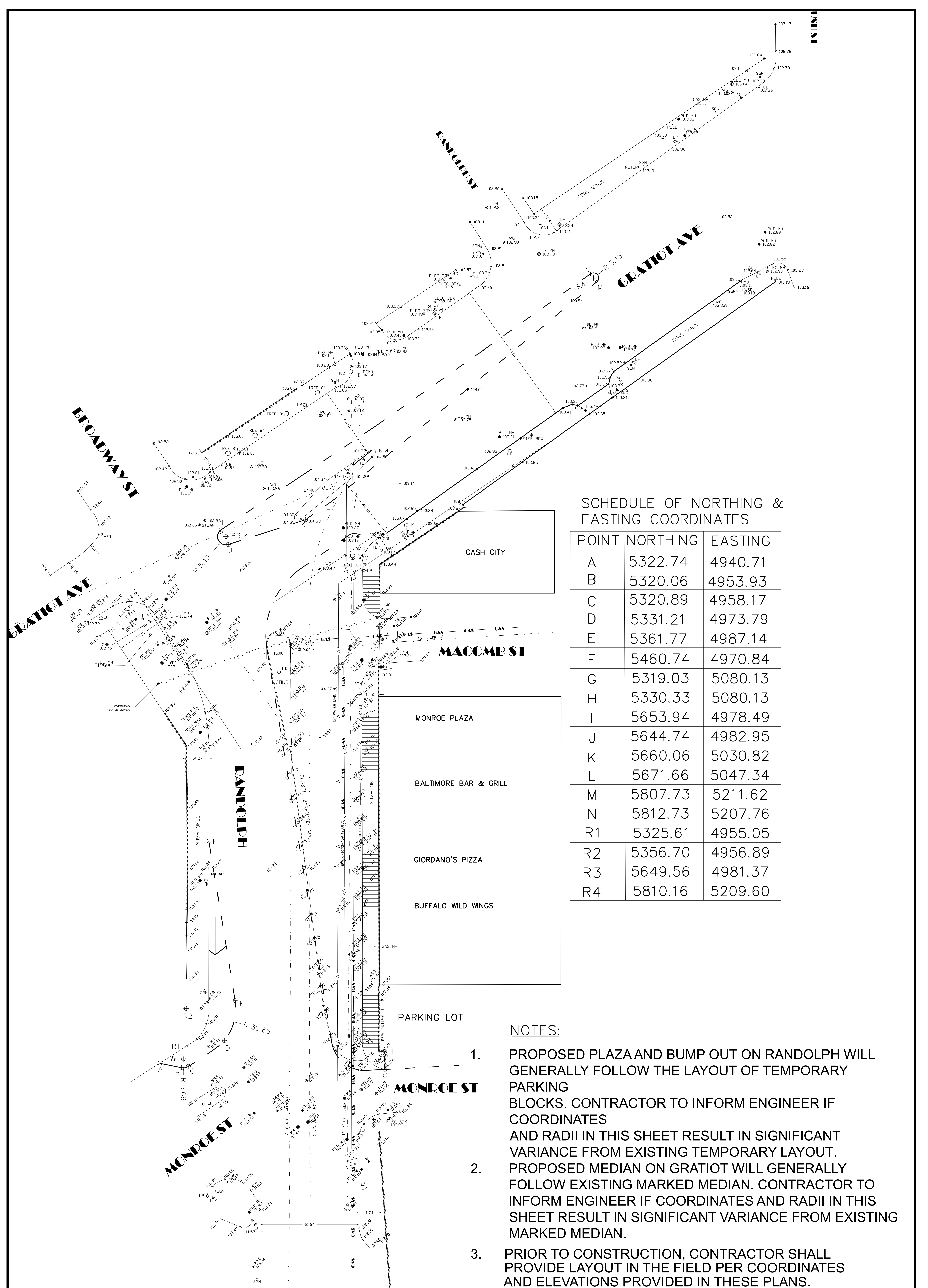
**SHEET TITLE:**  
**EXISTING CONDITIONS & UTILITY PLAN**

**PROJECT:**  
**RANDOLPH AND GRATIOT PLAZA**

**N**

**SHEET NO. 1**

**SCALE:**  
3/4" = 1' - 0"



SCHEDULE OF NORTHING & EASTING COORDINATES

POINT	NORTHING	EASTING
A	5322.74	4940.71
B	5320.06	4953.93
C	5320.89	4958.17
D	5331.21	4973.79
E	5361.77	4987.14
F	5460.74	4970.84
G	5319.03	5080.13
H	5330.33	5080.13
I	5653.94	4978.49
J	5644.74	4982.95
K	5660.06	5030.82
L	5671.66	5047.34
M	5807.73	5211.62
N	5812.73	5207.76
R1	5325.61	4955.05
R2	5356.70	4956.89
R3	5649.56	4981.37
R4	5810.16	5209.60

NOTES:

1. PROPOSED PLAZA AND BUMP OUT ON RANDOLPH WILL GENERALLY FOLLOW THE LAYOUT OF TEMPORARY PARKING BLOCKS. CONTRACTOR TO INFORM ENGINEER IF COORDINATES AND RADII IN THIS SHEET RESULT IN SIGNIFICANT VARIANCE FROM EXISTING TEMPORARY LAYOUT.
2. PROPOSED MEDIAN ON GRATIOT WILL GENERALLY FOLLOW EXISTING MARKED MEDIAN. CONTRACTOR TO INFORM ENGINEER IF COORDINATES AND RADII IN THIS SHEET RESULT IN SIGNIFICANT VARIANCE FROM EXISTING MARKED MEDIAN.
3. PRIOR TO CONSTRUCTION, CONTRACTOR SHALL PROVIDE LAYOUT IN THE FIELD PER COORDINATES AND ELEVATIONS PROVIDED IN THESE PLANS.




GENERAL SERVICES DEPARTMENT  
LANDSCAPE DESIGN UNIT  
18100 MEYERS RD, UPPER LEVEL  
DETROIT, MICHIGAN 48226  
(313) 628-0918 Phone  
(313) 628-0915 Fax

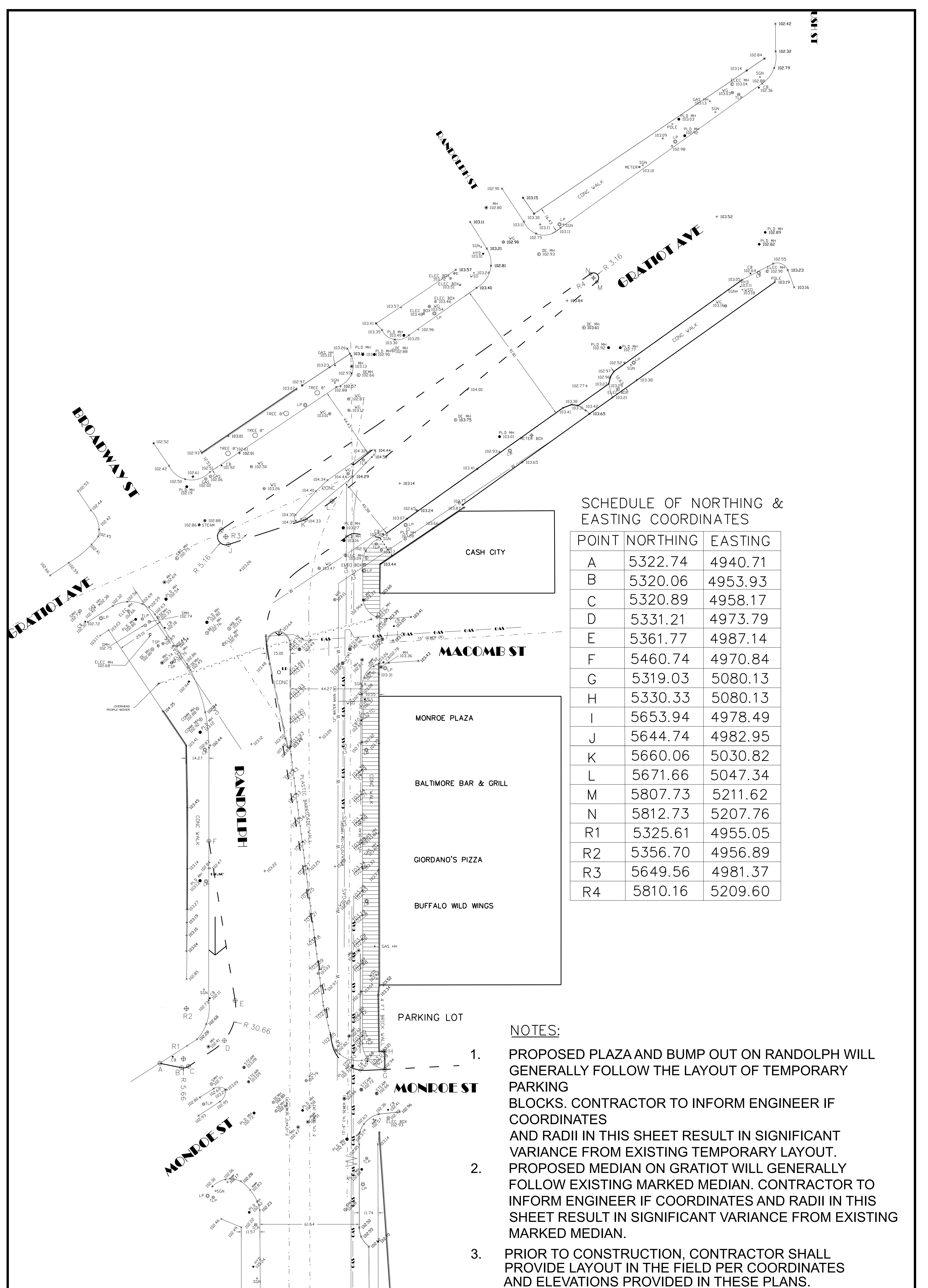
PREPARED BY:  
**LANDSCAPE DESIGN UNIT**

DRAWN BY: SA DATE: 09/16/2019  
CHECKED BY: TK/LA/TS/AHS DATE:  
APPROVED BY: L. ARAKELOV / AHS

SHEET TITLE:  
**REMOVAL PLAN (2)**

PROJECT:  
**RANDOLPH AND GRATIOT PLAZA**

N  SHEET NO. 3  
SCALE:  
1/2" = 1' - 0"



SCHEDULE OF NORTHING & EASTING COORDINATES

POINT	NORTHING	EASTING
A	5322.74	4940.71
B	5320.06	4953.93
C	5320.89	4958.17
D	5331.21	4973.79
E	5361.77	4987.14
F	5460.74	4970.84
G	5319.03	5080.13
H	5330.33	5080.13
I	5653.94	4978.49
J	5644.74	4982.95
K	5660.06	5030.82
L	5671.66	5047.34
M	5807.73	5211.62
N	5812.73	5207.76
R1	5325.61	4955.05
R2	5356.70	4956.89
R3	5649.56	4981.37
R4	5810.16	5209.60

NOTES:

1. PROPOSED PLAZA AND BUMP OUT ON RANDOLPH WILL GENERALLY FOLLOW THE LAYOUT OF TEMPORARY PARKING BLOCKS. CONTRACTOR TO INFORM ENGINEER IF COORDINATES AND RADII IN THIS SHEET RESULT IN SIGNIFICANT VARIANCE FROM EXISTING TEMPORARY LAYOUT.
2. PROPOSED MEDIAN ON GRATIOT WILL GENERALLY FOLLOW EXISTING MARKED MEDIAN. CONTRACTOR TO INFORM ENGINEER IF COORDINATES AND RADII IN THIS SHEET RESULT IN SIGNIFICANT VARIANCE FROM EXISTING MARKED MEDIAN.
3. PRIOR TO CONSTRUCTION, CONTRACTOR SHALL PROVIDE LAYOUT IN THE FIELD PER COORDINATES AND ELEVATIONS PROVIDED IN THESE PLANS.




GENERAL SERVICES DEPARTMENT  
LANDSCAPE DESIGN UNIT  
18100 MEYERS RD, UPPER LEVEL  
DETROIT, MICHIGAN 48226  
(313) 628-0918 Phone  
(313) 628-0915 Fax

PREPARED BY:  
**LANDSCAPE DESIGN UNIT**

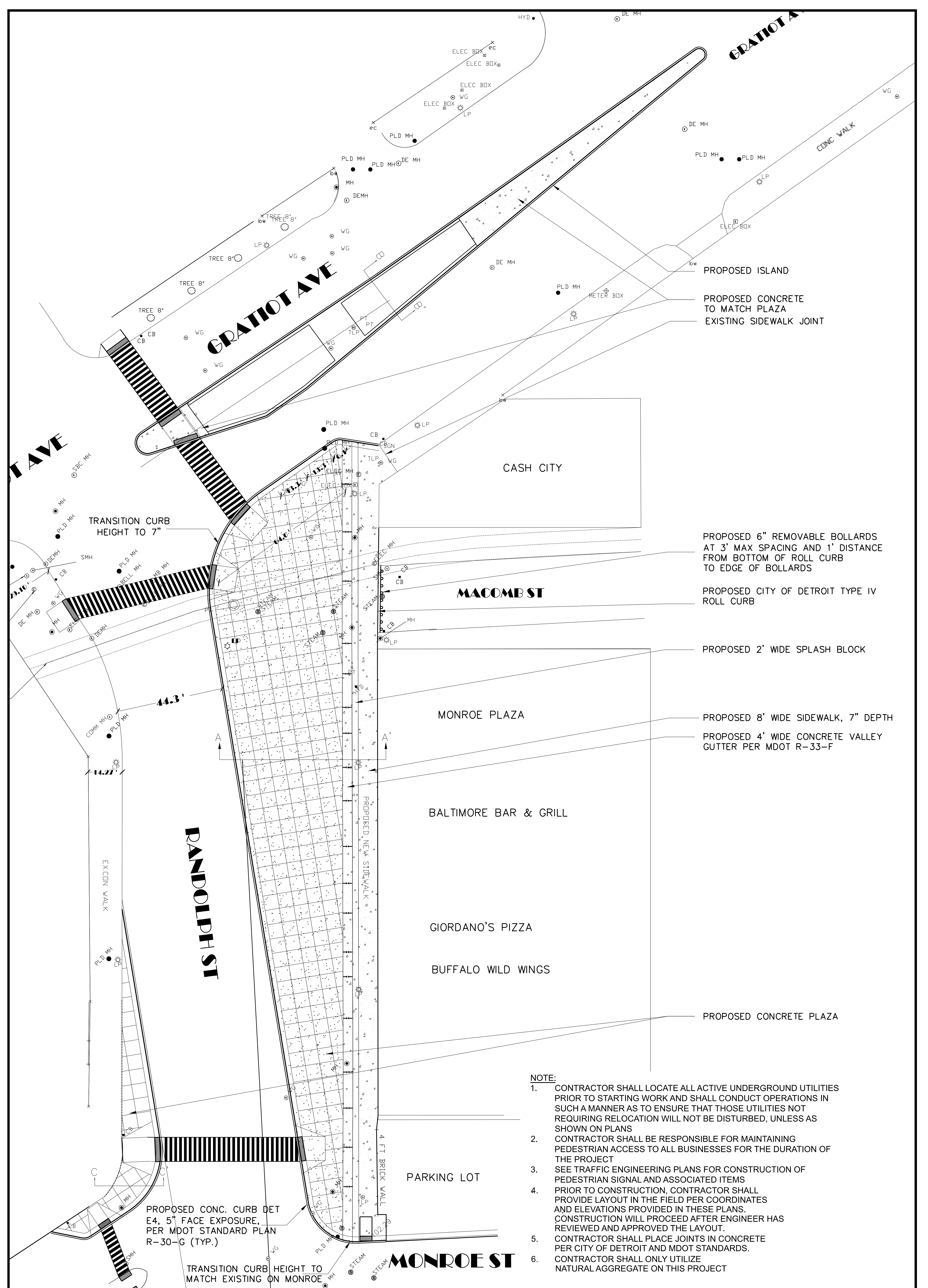
DRAWN BY: SA DATE: 09/16/2019  
CHECKED BY: TK/LA/TS/AHS DATE:  
APPROVED BY: L. ARAKELOV / AHS

SHEET TITLE:  
**REMOVAL PLAN (2)**

PROJECT:  
**RANDOLPH AND GRATIOT PLAZA**

N  SHEET NO. 3  
SCALE:  
1/2" = 1' - 0"





- NOTE:**
1. CONTRACTOR SHALL LOCATE ALL ACTIVE UNDERGROUND UTILITIES PRIOR TO STARTING WORK AND SHALL CONDUCT OPERATIONS IN SUCH A MANNER AS TO ENSURE THAT THOSE UTILITIES NOT REQUIRING RELOCATION WILL NOT BE DISTURBED, UNLESS AS SHOWN ON PLANS
  2. CONTRACTOR SHALL BE RESPONSIBLE FOR MAINTAINING PEDESTRIAN ACCESS TO ALL BUSINESSES FOR THE DURATION OF THE PROJECT
  3. SEE TRAFFIC ENGINEERING PLANS FOR CONSTRUCTION OF PEDESTRIAN SIGNAL AND ASSOCIATED ITEMS
  4. PRIOR TO CONSTRUCTION, CONTRACTOR SHALL PROVIDE LAYOUT IN THE FIELD PER COORDINATES AND ELEVATIONS PROVIDED IN THESE PLANS. CONSTRUCTION WILL PROCEED AFTER ENGINEER HAS REVIEWED AND APPROVED THE LAYOUT.
  5. CONTRACTOR SHALL PLACE JOINTS IN CONCRETE PER CITY OF DETROIT AND MDOT STANDARDS.
  6. CONTRACTOR SHALL ONLY UTILIZE NATURAL AGGREGATE ON THIS PROJECT




GENERAL SERVICES DEPARTMENT  
LANDSCAPE DESIGN UNIT  
18100 MEYERS RD, UPPER LEVEL  
DETROIT, MICHIGAN 48226  
(313) 628-0918 Phone  
(313) 628-0915 Fax

PREPARED BY:  
**LANDSCAPE DESIGN UNIT**

DRAWN BY: SA                      DATE: 09/16/2019  
CHECKED BY: TK/LA/TS/AHS      DATE:  
APPROVED BY: L. ARAKELOV / AHS

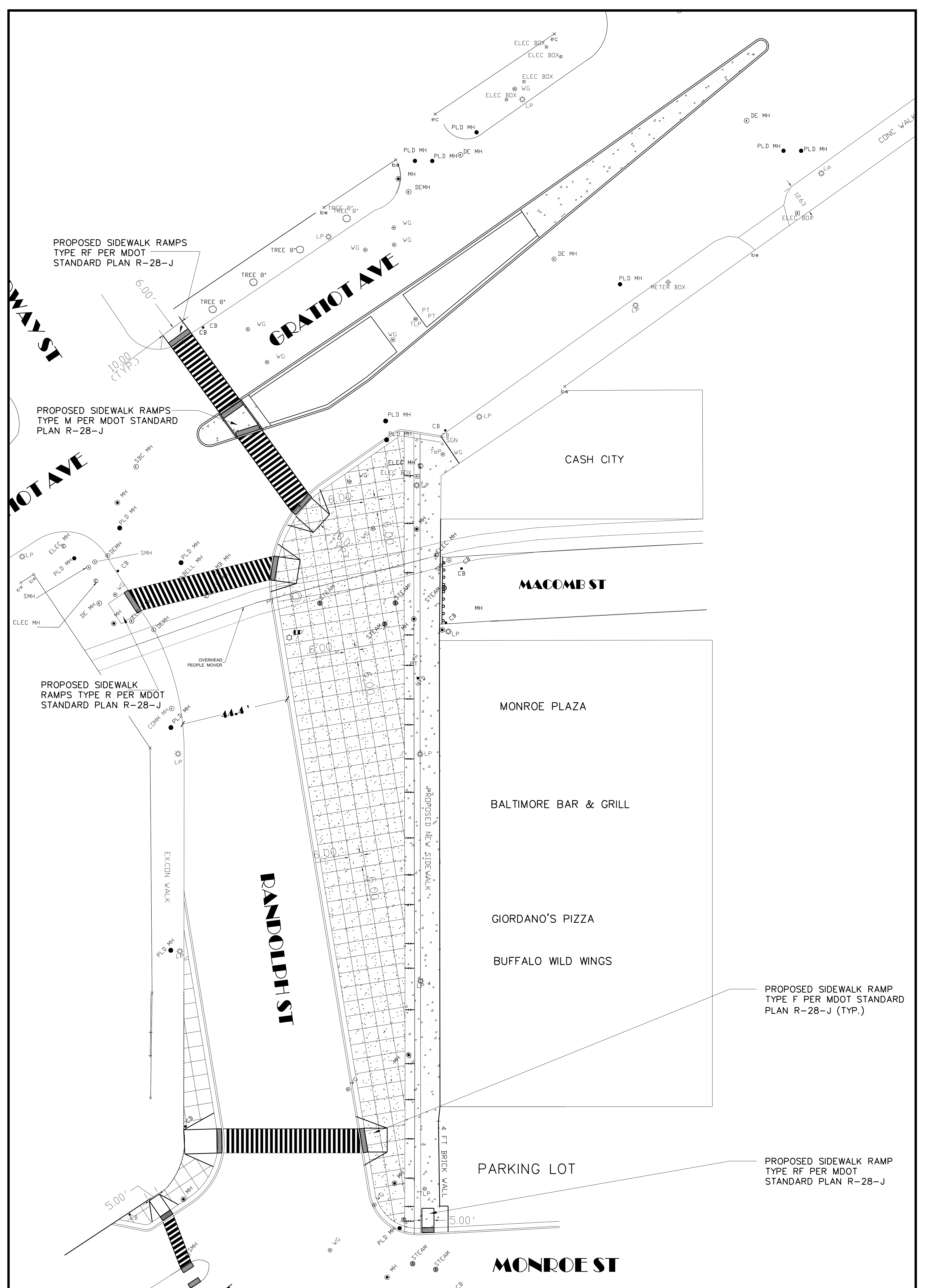
SHEET TITLE:  
**CONSTRUCTION PLAN (1)**

PROJECT:  
**RANDOLPH AND GRATIOT PLAZA**

N 

SHEET NO. 4

SCALE:  
3/4" = 1' - 0"



PROPOSED SIDEWALK RAMP  
TYPE RF PER MDOT  
STANDARD PLAN R-28-J

PROPOSED SIDEWALK RAMP  
TYPE M PER MDOT STANDARD  
PLAN R-28-J

PROPOSED SIDEWALK  
RAMP TYPE R PER MDOT  
STANDARD PLAN R-28-J

PROPOSED SIDEWALK RAMP  
TYPE F PER MDOT STANDARD  
PLAN R-28-J (TYP.)

PROPOSED SIDEWALK RAMP  
TYPE RF PER MDOT  
STANDARD PLAN R-28-J



GENERAL SERVICES DEPARTMENT  
LANDSCAPE DESIGN UNIT  
18100 MEYERS RD, UPPER LEVEL  
DETROIT, MICHIGAN 48226  
(313) 628-0918 Phone  
(313) 628-0915 Fax

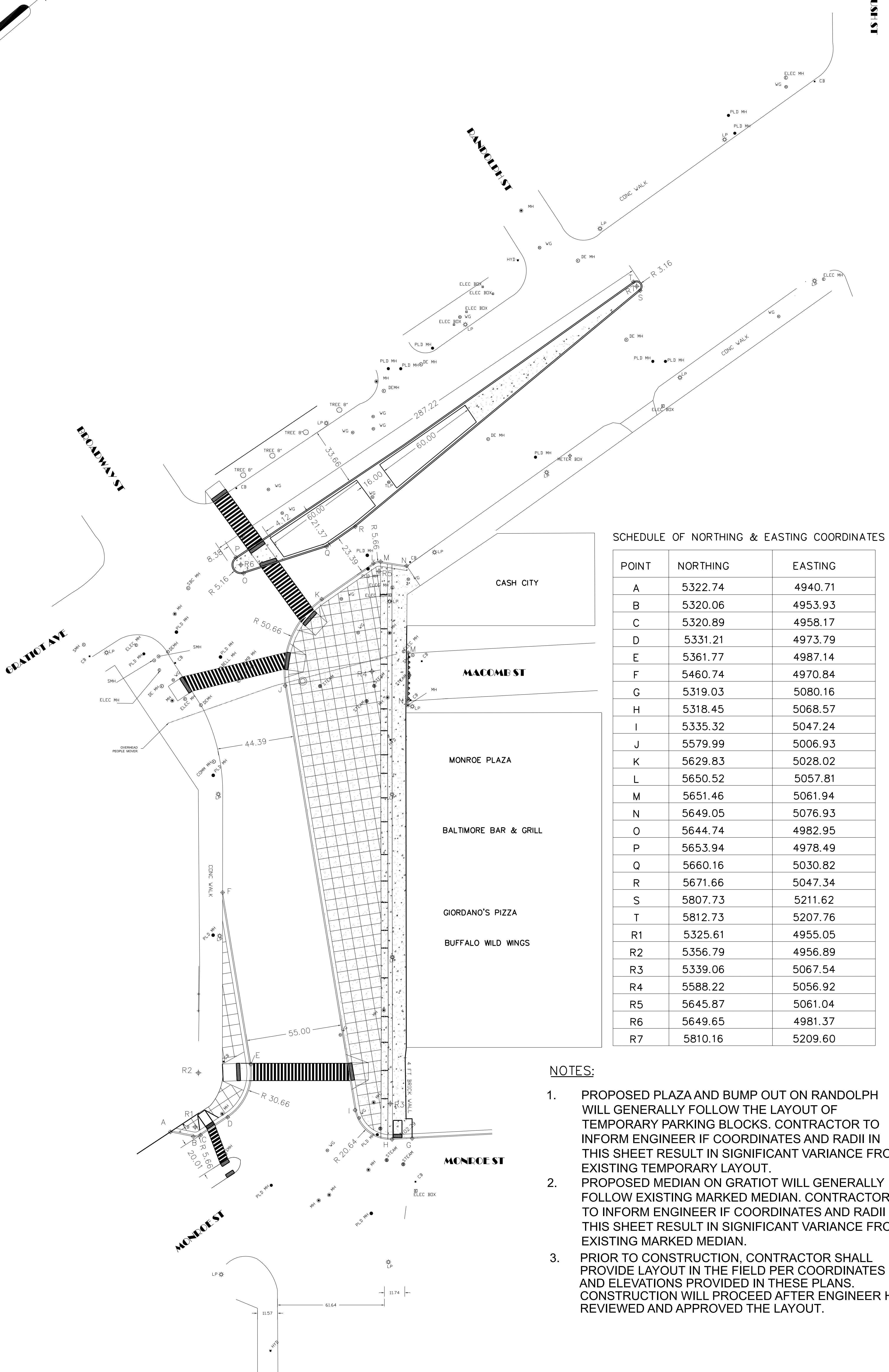
PREPARED BY:  
LANDSCAPE DESIGN UNIT

DRAWN BY: SA DATE: 09/16/2019  
CHECKED BY: TK/LA/TS/AHS DATE:  
APPROVED BY: L. ARAKELOV / AHS

SHEET TITLE:  
**CONSTRUCTION  
PLAN (2)**

PROJECT:  
**RANDOLPH AND GRATIOT  
PLAZA**

N   
SHEET NO. 5  
SCALE:  
3/4" = 1'-0"



SCHEDULE OF NORTHING & EASTING COORDINATES

POINT	NORTHING	EASTING
A	5322.74	4940.71
B	5320.06	4953.93
C	5320.89	4958.17
D	5331.21	4973.79
E	5361.77	4987.14
F	5460.74	4970.84
G	5319.03	5080.16
H	5318.45	5068.57
I	5335.32	5047.24
J	5579.99	5006.93
K	5629.83	5028.02
L	5650.52	5057.81
M	5651.46	5061.94
N	5649.05	5076.93
O	5644.74	4982.95
P	5653.94	4978.49
Q	5660.16	5030.82
R	5671.66	5047.34
S	5807.73	5211.62
T	5812.73	5207.76
R1	5325.61	4955.05
R2	5356.79	4956.89
R3	5339.06	5067.54
R4	5588.22	5056.92
R5	5645.87	5061.04
R6	5649.65	4981.37
R7	5810.16	5209.60

**NOTES:**

1. PROPOSED PLAZA AND BUMP OUT ON RANDOLPH WILL GENERALLY FOLLOW THE LAYOUT OF TEMPORARY PARKING BLOCKS. CONTRACTOR TO INFORM ENGINEER IF COORDINATES AND RADII IN THIS SHEET RESULT IN SIGNIFICANT VARIANCE FROM EXISTING TEMPORARY LAYOUT.
2. PROPOSED MEDIAN ON GRATIOT WILL GENERALLY FOLLOW EXISTING MARKED MEDIAN. CONTRACTOR TO INFORM ENGINEER IF COORDINATES AND RADII IN THIS SHEET RESULT IN SIGNIFICANT VARIANCE FROM EXISTING MARKED MEDIAN.
3. PRIOR TO CONSTRUCTION, CONTRACTOR SHALL PROVIDE LAYOUT IN THE FIELD PER COORDINATES AND ELEVATIONS PROVIDED IN THESE PLANS. CONSTRUCTION WILL PROCEED AFTER ENGINEER HAS REVIEWED AND APPROVED THE LAYOUT.



GENERAL SERVICES DEPARTMENT  
LANDSCAPE DESIGN UNIT  
18100 MEYERS RD, UPPER LEVEL  
DETROIT, MICHIGAN 48226  
(313) 628-0918 Phone  
(313) 628-0915 Fax

**PREPARED BY:**  
LANDSCAPE DESIGN UNIT

DRAWN BY: SA DATE: 09/16/2019  
CHECKED BY: TK/LA/TS/AHS DATE:  
APPROVED BY: L. ARAKELOVAHS

**SHEET TITLE:**

**CONSTRUCTION  
PLAN (3)**

**PROJECT:**

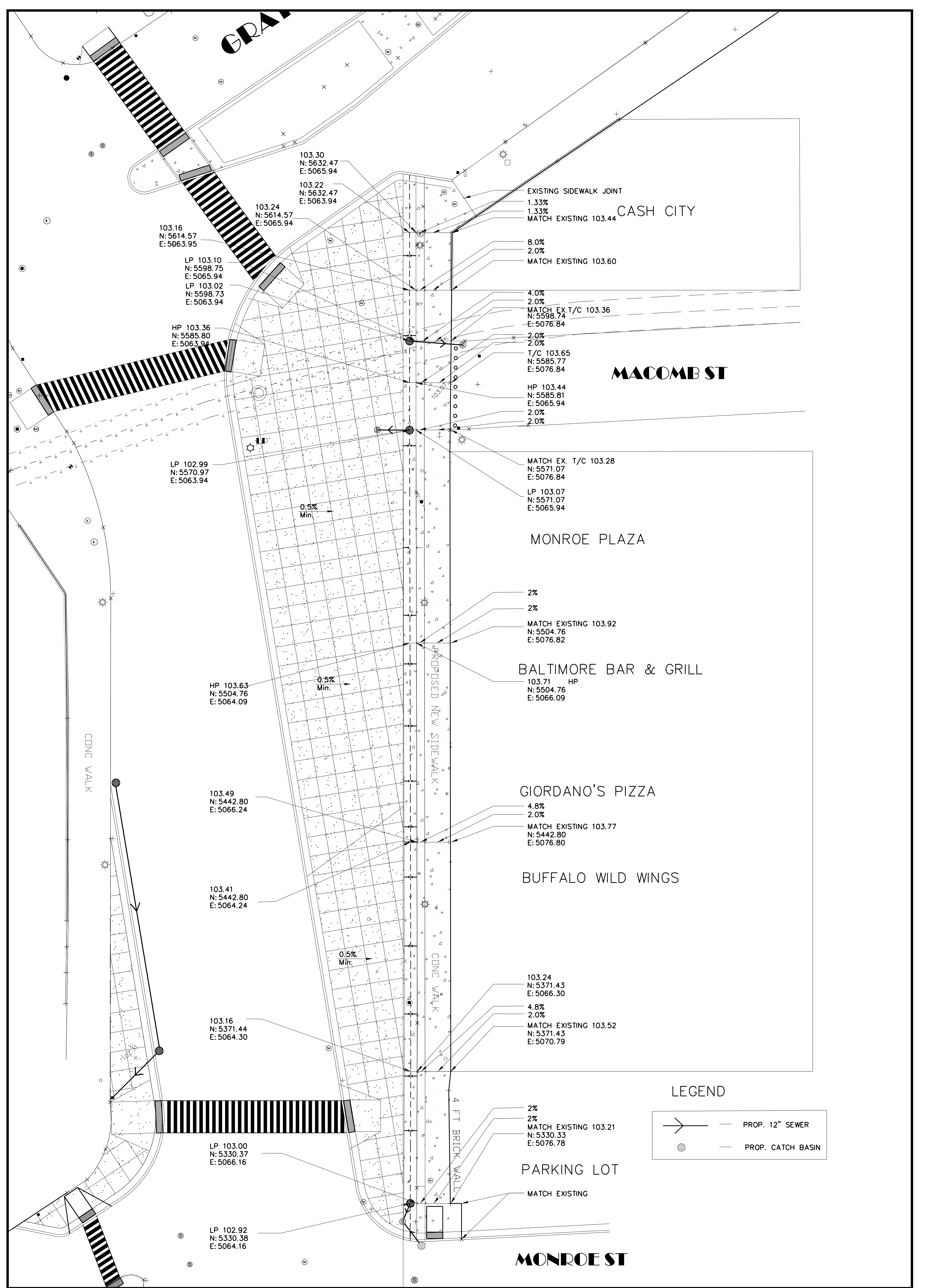
**RANDOLPH AND GRATIOT  
PLAZA**



SHEET NO. 6

SCALE:  
1/2" = 1' - 0"





**LEGEND**

- PROP. 12" SEWER
- PROP. CATCH BASIN

**GSD**  
 CITY OF DETROIT  
 GENERAL SERVICES DEPARTMENT  
 "Always Ready to be Your Call!"

GENERAL SERVICES DEPARTMENT  
 LANDSCAPE DESIGN UNIT  
 18100 MEYERS RD, UPPER LEVEL  
 DETROIT, MICHIGAN 48226  
 (313) 628-0918 Phone  
 (313) 628-0915 Fax

**PREPARED BY:**  
 LANDSCAPE DESIGN UNIT

**DRAWN BY:** SA      **DATE:** 09/16/2019  
**CHECKED BY:** TK/LATS/AHS      **DATE:**  
**APPROVED BY:** L. ARAKELOV / AHS

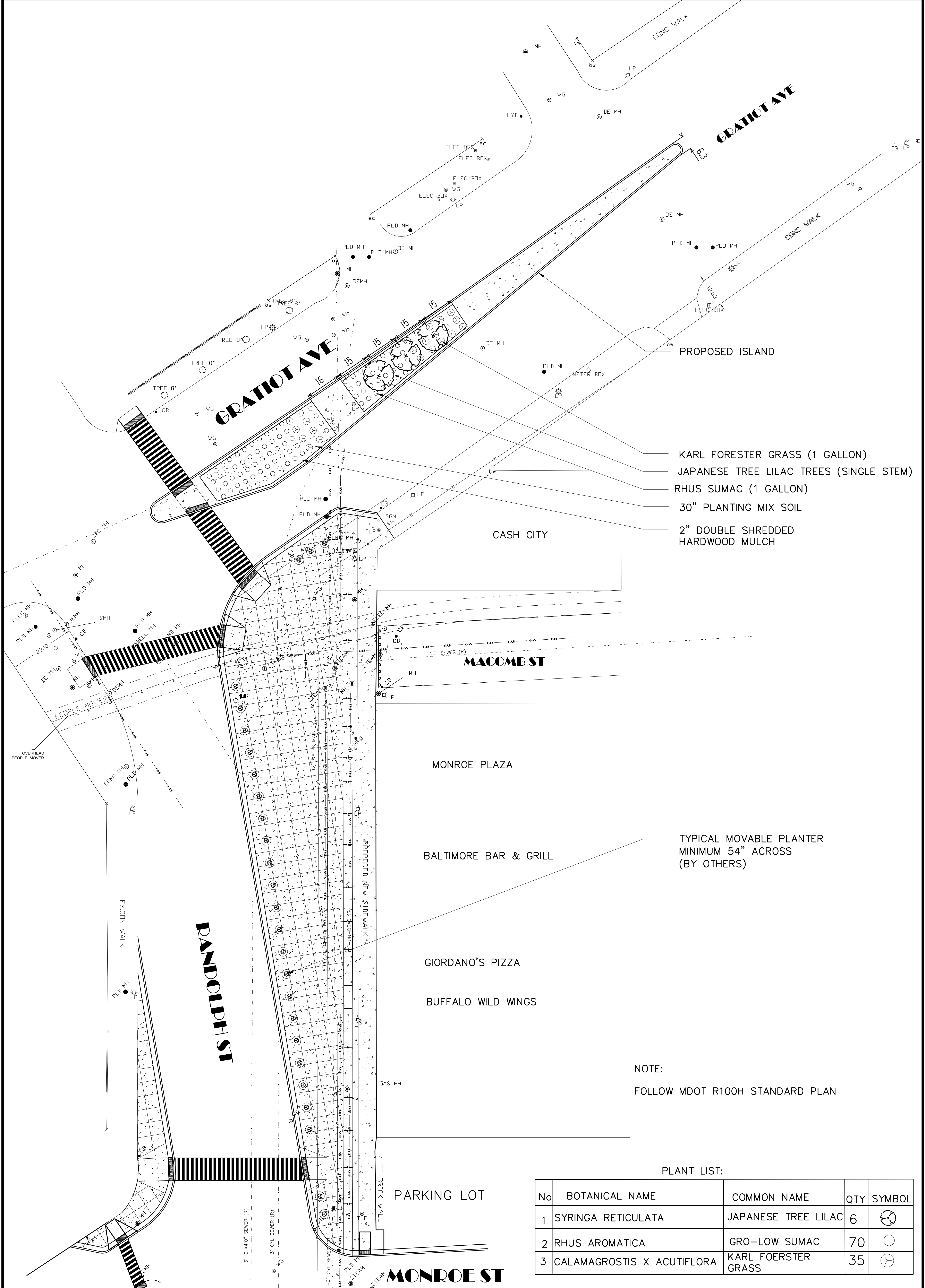
**SHEET TITLE:**  
**GRADING & DRAINAGE PLAN**

**PROJECT:**  
**RANDOLPH AND GRATIOT PLAZA**

**N**

**SHEET NO. 7**

**SCALE:**  
 1" = 1' - 0"



- KARL FORESTER GRASS (1 GALLON)
- JAPANESE TREE LILAC TREES (SINGLE STEM)
- RHUS SUMAC (1 GALLON)
- 30" PLANTING MIX SOIL
- 2" DOUBLE SHREDDED HARDWOOD MULCH

TYPICAL MOVABLE PLANTER  
MINIMUM 54" ACROSS  
(BY OTHERS)

NOTE:  
FOLLOW MDOT R100H STANDARD PLAN

PLANT LIST:

No	BOTANICAL NAME	COMMON NAME	QTY	SYMBOL
1	SYRINGA RETICULATA	JAPANESE TREE LILAC	6	⊗
2	RHUS AROMATICA	GRO-LOW SUMAC	70	○
3	CALAMAGROSTIS X ACUTIFLORA	KARL FOERSTER GRASS	35	⊙

**GSD**  
CITY OF DETROIT  
GENERAL SERVICES DEPARTMENT  
"Working Smart to the Best Level"


GENERAL SERVICES DEPARTMENT  
LANDSCAPE DESIGN UNIT  
18100 MEYERS RD, UPPER LEVEL  
DETROIT, MICHIGAN 48226  
(313) 628-0918 Phone  
(313) 628-0915 Fax

PREPARED BY:  
**LANDSCAPE DESIGN UNIT**

DRAWN BY: SA      DATE: 09/16/2019  
CHECKED BY: TK/LA/TS/AHS      DATE:  
APPROVED BY: L. ARAKELOV/AHS

SHEET TITLE:  
**PLANTING PLAN**

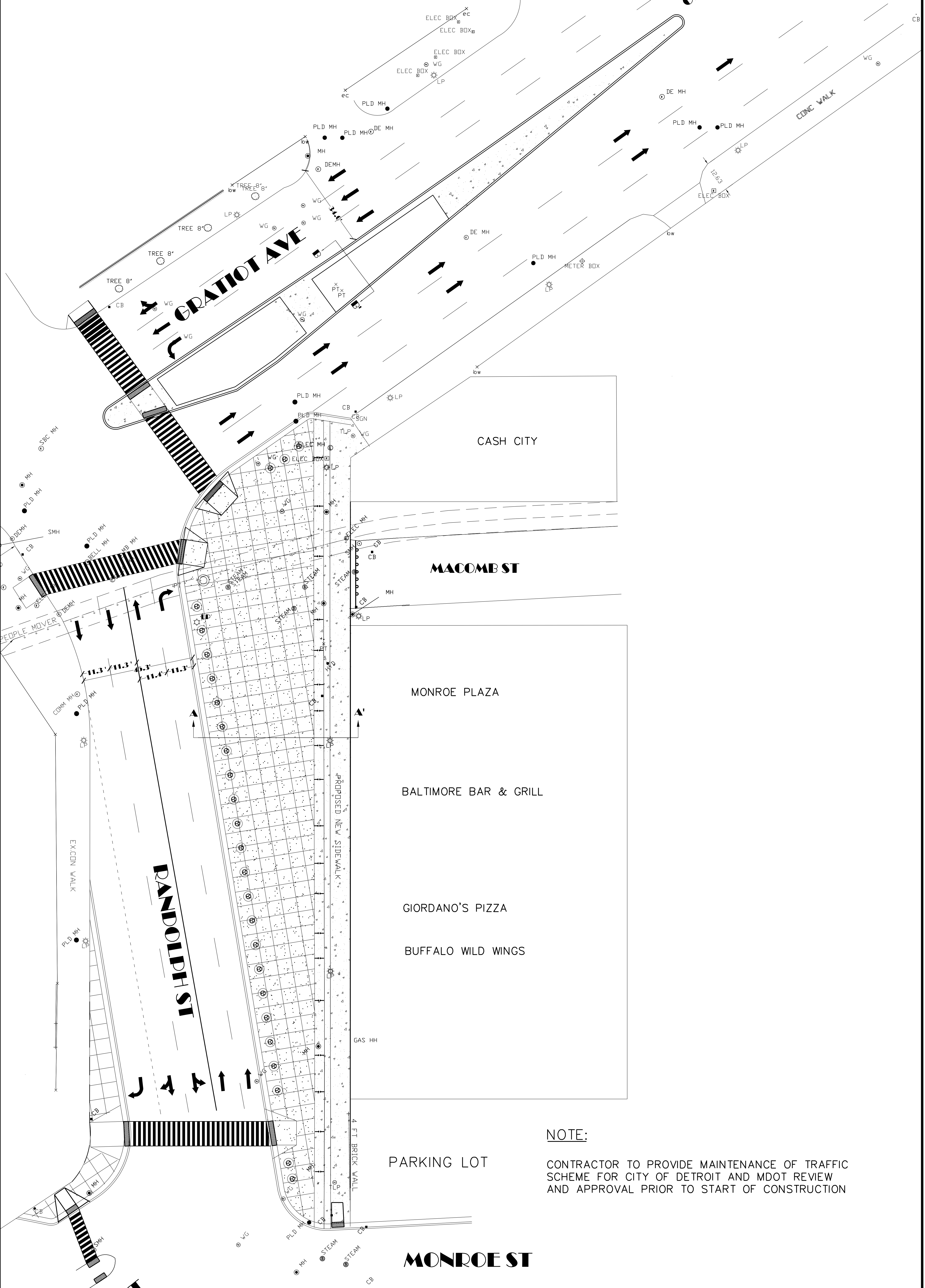
PROJECT:  
**RANDOLPH AND GRATIOT PLAZA**

N 

SHEET NO. 8

SCALE:  
**3/4" = 1'-0"**





**NOTE:**  
 CONTRACTOR TO PROVIDE MAINTENANCE OF TRAFFIC SCHEME FOR CITY OF DETROIT AND MDOT REVIEW AND APPROVAL PRIOR TO START OF CONSTRUCTION

**GSD**  
 CITY OF DETROIT  
 GENERAL SERVICES DEPARTMENT  
 "Working Smart to Make Detroit Better"

GENERAL SERVICES DEPARTMENT  
 LANDSCAPE DESIGN UNIT  
 18100 MEYERS RD, UPPER LEVEL  
 DETROIT, MICHIGAN 48226  
 (313) 628-0918 Phone  
 (313) 628-0915 Fax

**PREPARED BY:**  
 LANDSCAPE DESIGN UNIT

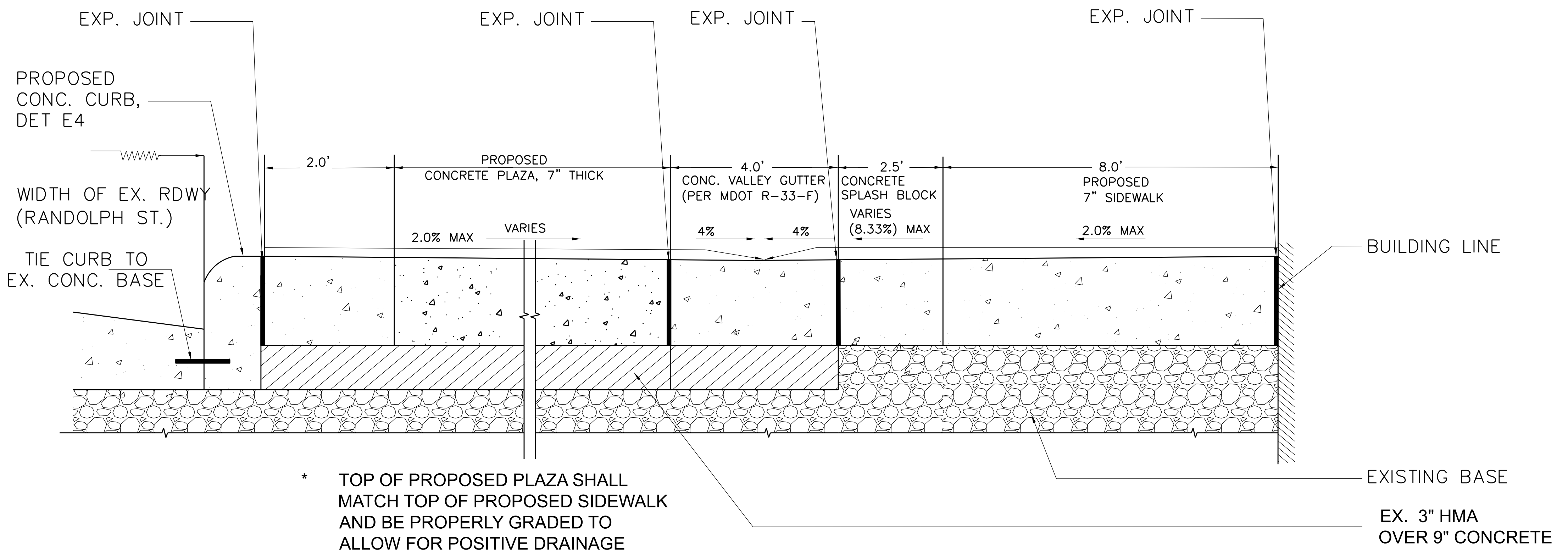
DRAWN BY: SA      DATE: 06/16/2019  
 CHECKED BY: TK/LA/TS/AHS      DATE:  
 APPROVED BY: L. ARAKELOV / AHS

**SHEET TITLE:**  
 TRAFFIC FLOW PLAN

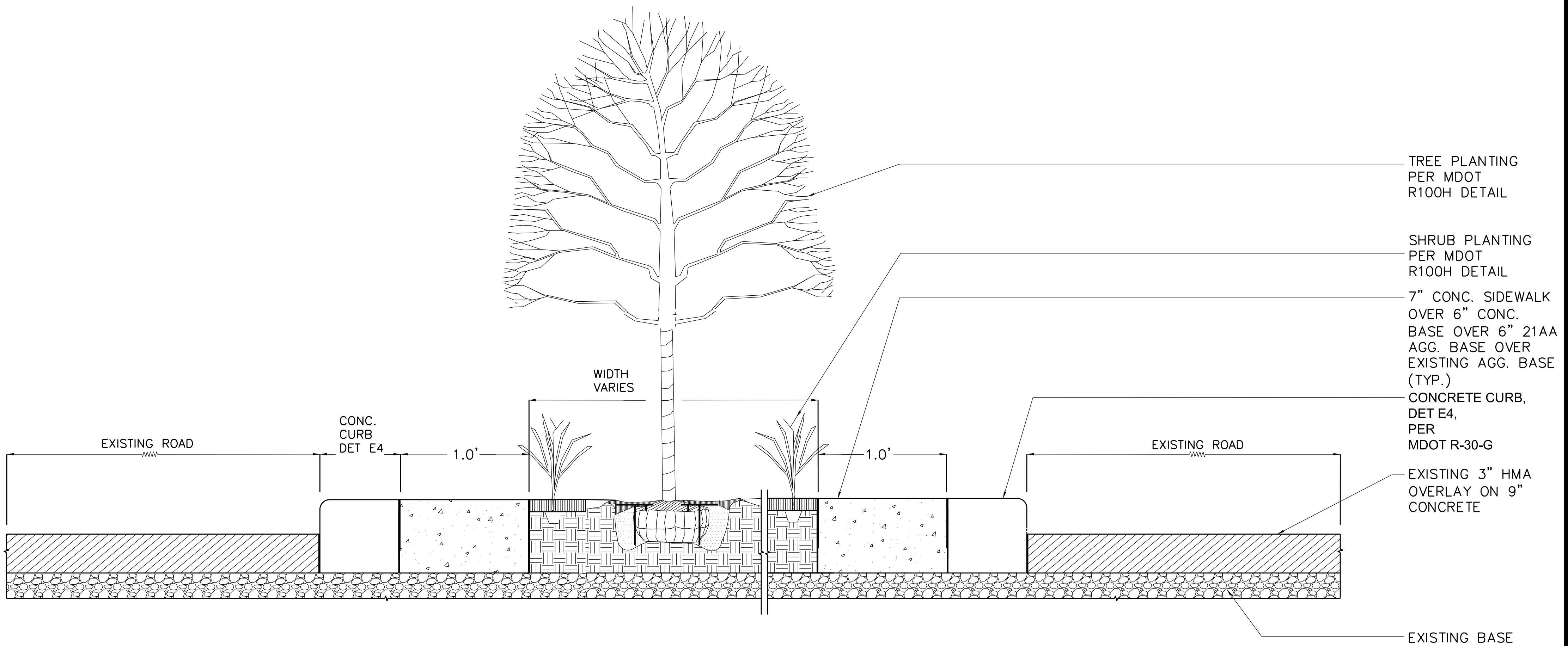
**PROJECT:**  
 RANDOLPH AND GRATIOT PLAZA

**SHEET NO. 9**

**SCALE:**  
 3/4" = 1' - 0"



## SECTION A A'



## SECTION B B'



GENERAL SERVICES DEPARTMENT  
LANDSCAPE DESIGN UNIT  
18100 MEYERS RD, UPPER LEVEL  
DETROIT, MICHIGAN 48226  
(313) 628-0918 Phone  
(313) 628-0915 Fax

PREPARED BY:  
LANDSCAPE DESIGN UNIT

DRAWN BY: SA DATE: 09/16/2019  
CHECKED BY: TK/LA/TS/AHS DATE:  
APPROVED BY: L. ARAKELOV/AHS

SHEET TITLE:

SECTION  
DETAILS

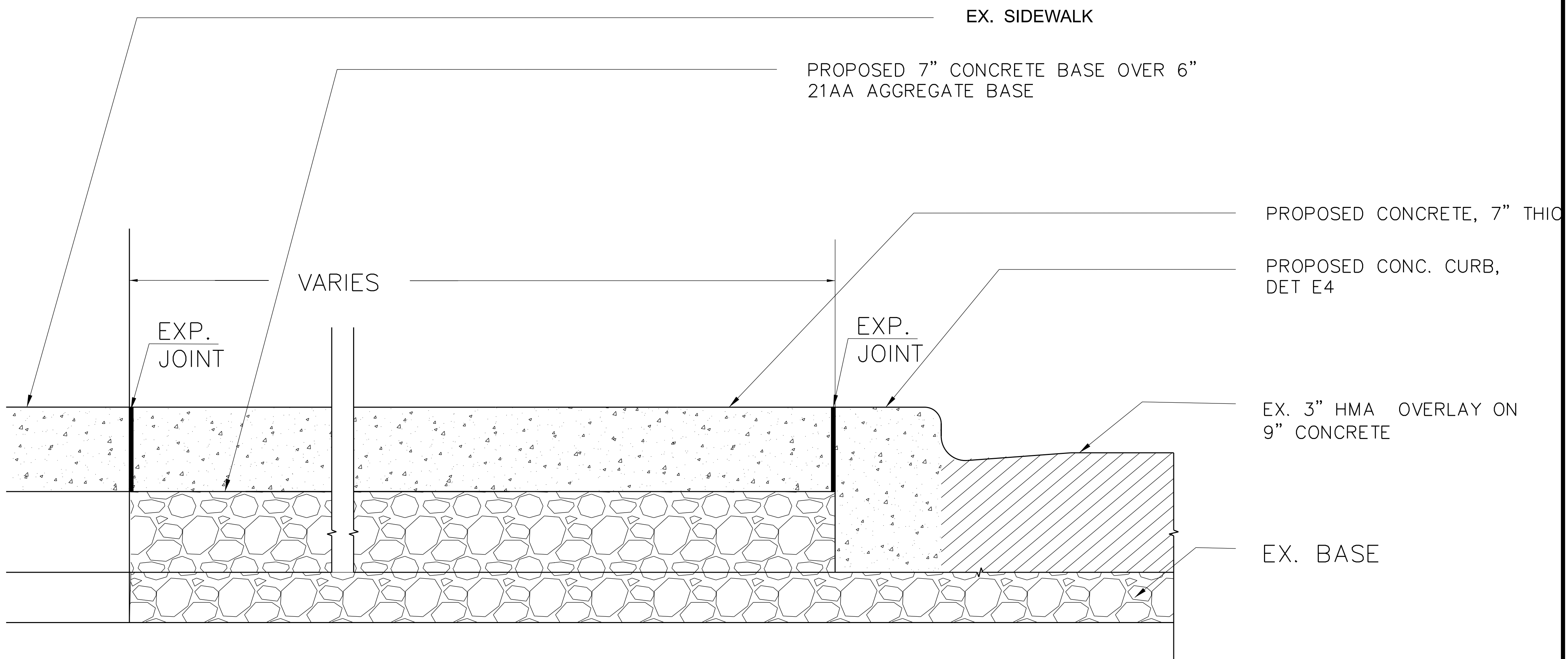
PROJECT:

RANDOLPH AND GRATIOT  
PLAZA

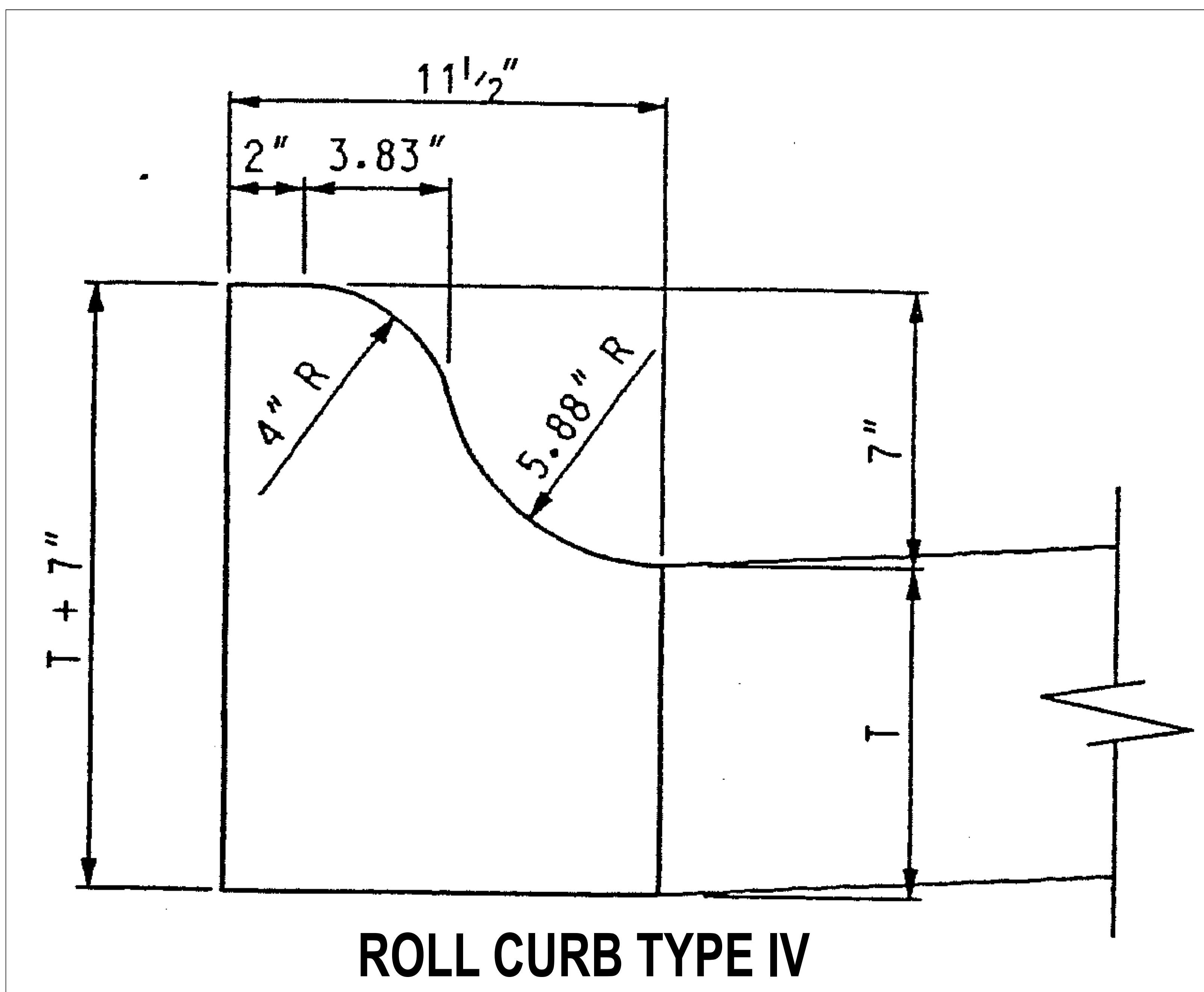


SHEET NO. 10

SCALE:  
N.T.S



**SECTION C C'**



**ROLL CURB TYPE IV**