

*W. H. Hopper 1912*  
 FLORENCE INTERSECTION  
 DELETED 4-8-54 AND  
 KENLEWEL & GRADE CHANGE 8-3-50 AND  
 CATCH BASINS ADDED 7-3-50 JK

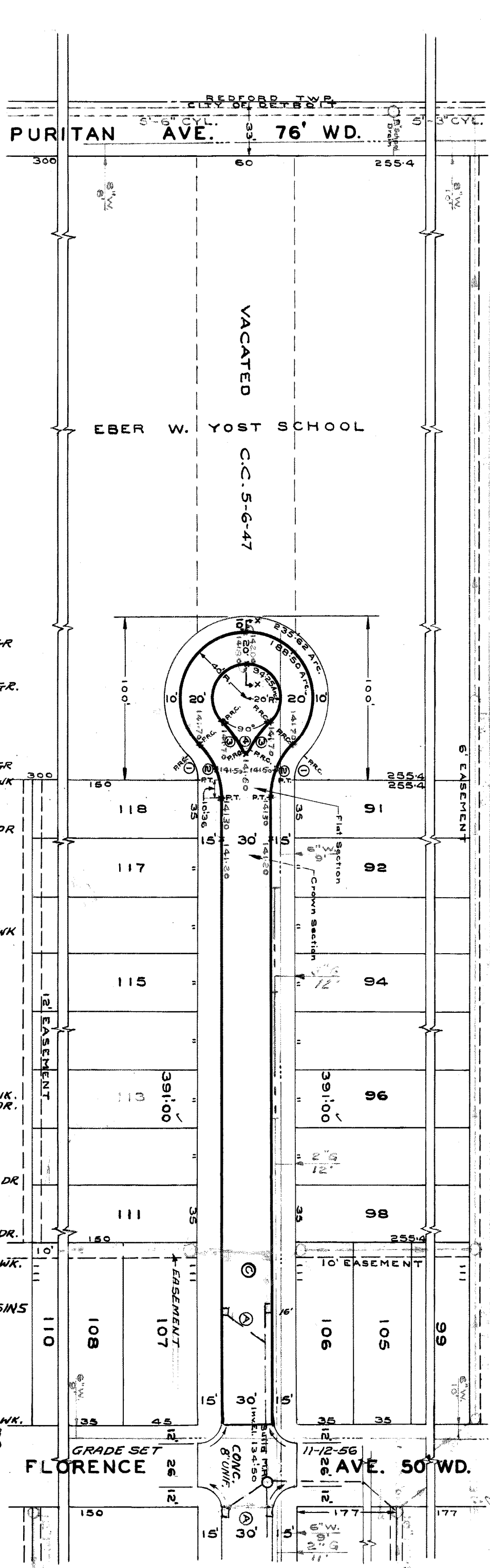
By *D.P.W.* 5-28-51  
 C.C.-2-5-57

764 ✓	1822 ✓	100 ✓	2 ✓	50 ✓	100 ✓
1799	1879	58	18	1-20-50	2-9-47
1"=60'	1"=2'	1"=60'	1"=2'	1"=60'	1"=2'
1099 04	1099 04	524 52	524 52	524 52	524 52
1049 04	1049 04	524 52	524 52	524 52	524 52

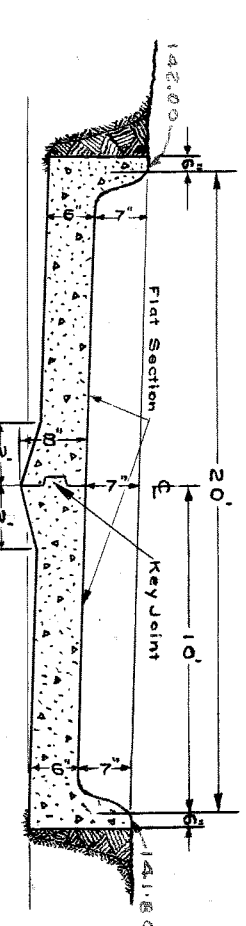
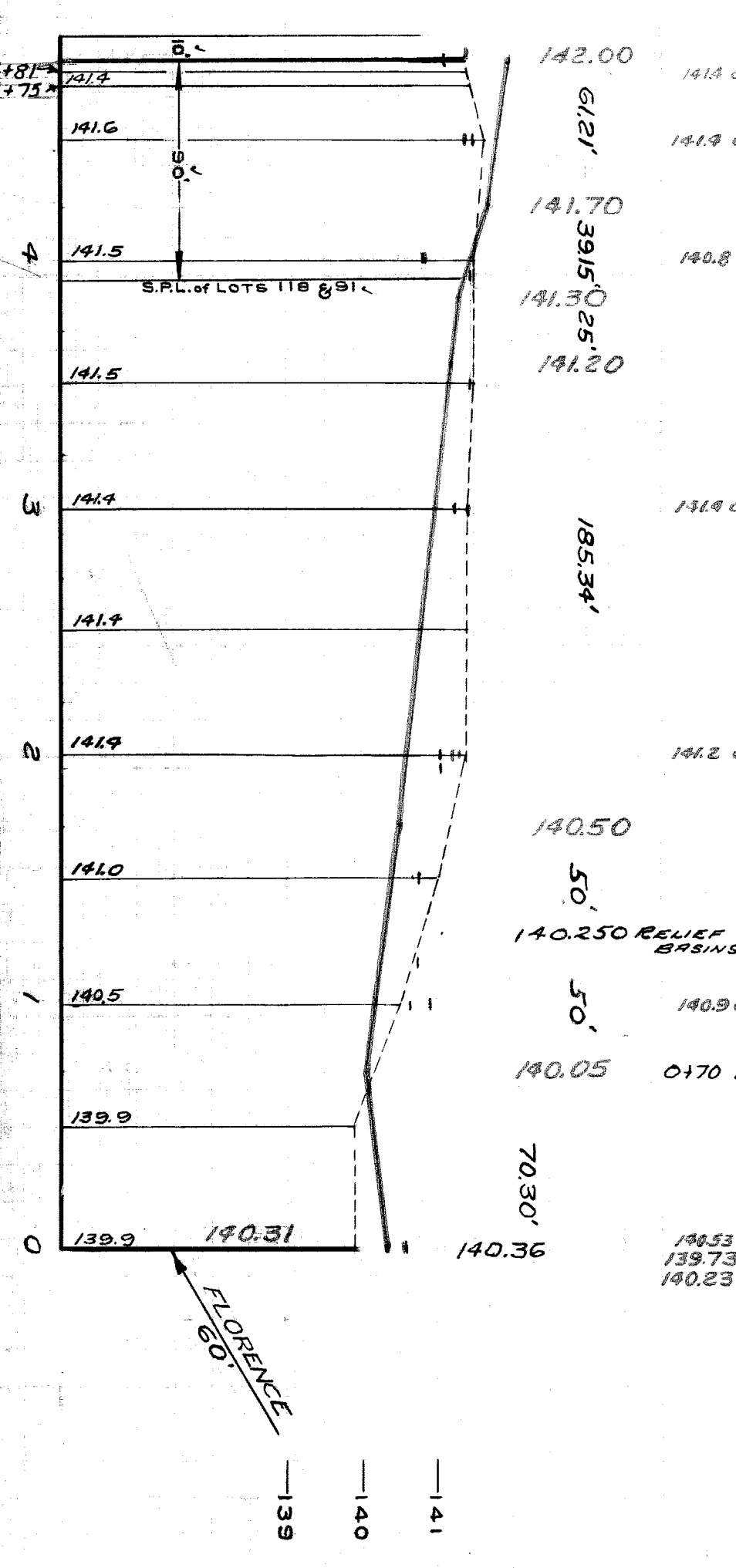
1799	1879	58	18	1-20-50	2-9-47
1"=60'	1"=2'	1"=60'	1"=2'	1"=60'	1"=2'
1099 04	1099 04	524 52	524 52	524 52	524 52
1049 04	1049 04	524 52	524 52	524 52	524 52

*W. H. Hopper*  
 L.G. VANTUYL, R<sup>3</sup>  
 L.G. VANTUYL.

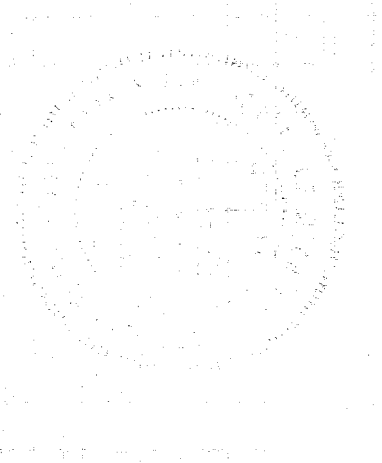
DEPARTMENT OF PUBLIC WORKS  
 CITY ENGINEER'S OFFICE - DIVISION OF PAVING DESIGN  
 STREET PAVING PLAN  
 WINSTON  
 289'30" N. OF N. P.L. OF PURITAN  
 N. P.L. OF FLORENCE  
 BARTON - WAYBURN BLDG. CO. 7-5-55  
 8' 6" 8" TYPE II  
 20' 830' ✓



45° 00'	18° 39'	127° 18'
32° 00'	85° 36'	2° 00'
18° 28'	10° 23'	4° 04'
15° 71'	20° 54'	4° 44'
8° 50'	3° 01'	3° 44'



NOTE -  
 FOR SYMBOLS (A) ETC. SEE STD DETAIL DRWG. C-327  
 HORIZONTAL CONTROL BY EXISTING RETURN  
 BENCH MARKS  
 ELEV.  
 P.L.B.M. # 121-251 NE COR. FIVE POINTS & PURITAN 144.825  
 TOP OF HYD. N.S. OF WINSTON 390.5, OF FLORENCE 144.735  
 P.L.B.M. # 121-252 NE COR. TELEGRAPH & PURITAN 151.611



411403