

STREET PAVING PLAN

WINCHESTER

2'E. OF EPL. MACKAY  
133.85' E. OF ERL. HARNED

53-2  
18 91

RECORD NO. 3254C-14  
3244

DATE OF STREET 2  
DATE OF PLAN 2  
SHEET NO. 26

PET. # 3244 FRANK W URBANS 9-9-52 25% PD.

BENCH MARKS  
PLBM# 91-252A S.E. COR. EIGHT MILE RD & LUMPKIN  
ARR. ON HYD. S.W. COR. MACKAY & WINCHESTER  
ARR. ON HYD. S.E. COR. ANGLIN & WINCHESTER  
ARR. ON HYD. S.W. COR. HARNED & WINCHESTER  
PLBM.# 91-293 S.E. COR. HARNED & EIGHT MILE RD.  
ELEVATION  
149.468 ✓  
155.77 ✓  
155.20 ✓  
154.90 ✓  
149.47 ✓

NOTE  
FOR SYMBOLS (A) ETC. SEE STD. DETAIL DWG. C-327  
CONTROL MAINTAINED BY EXISTING RETURNS.

411481

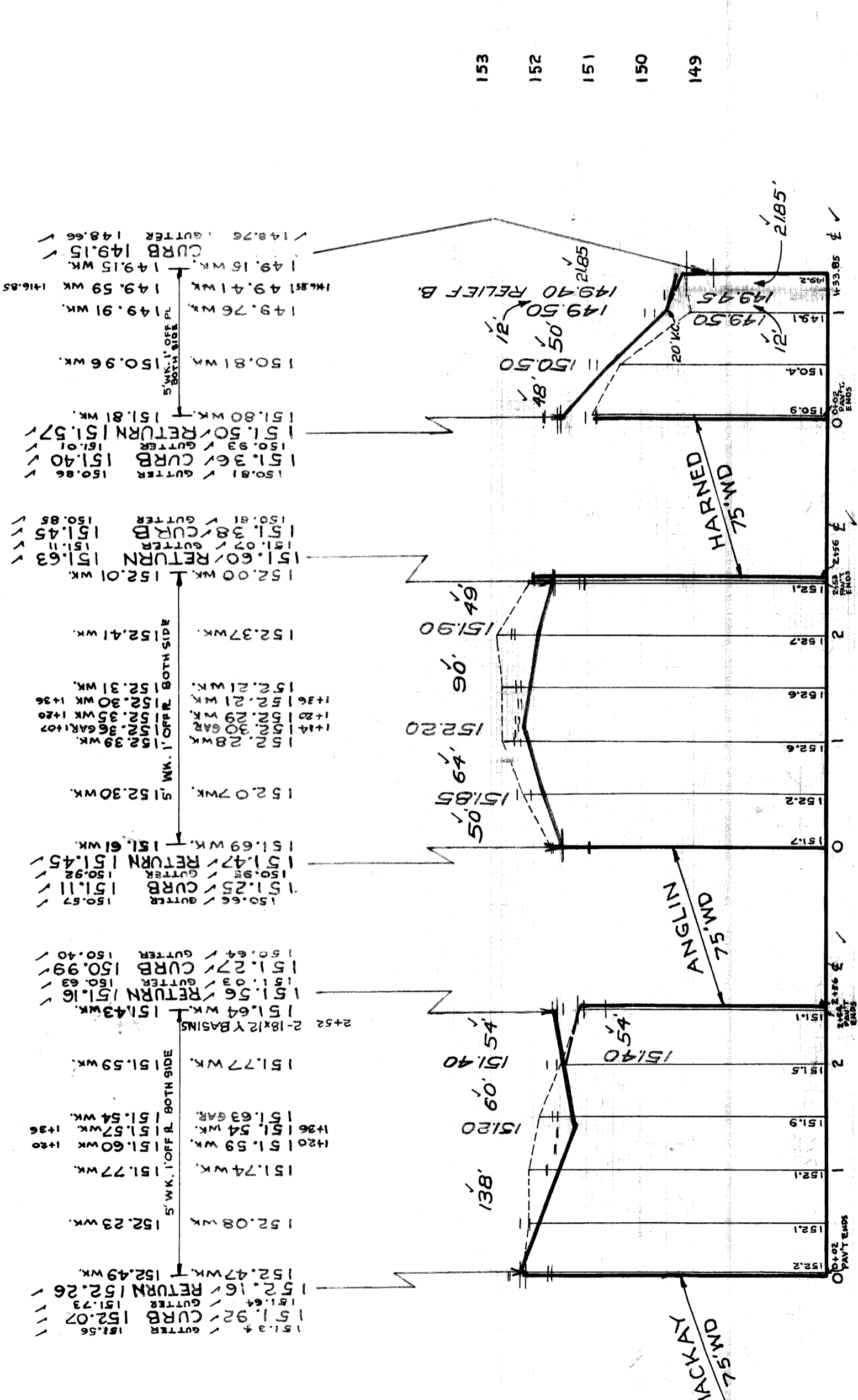
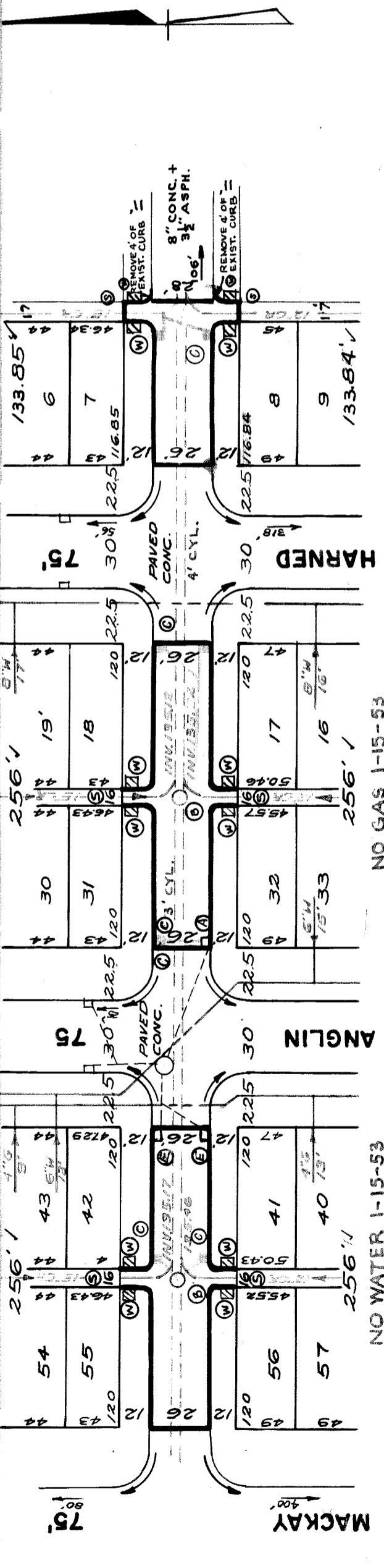
DESIGNED BY J. KING ✓  
CHECKED BY Erickson Beckm  
APPROVED BY M. J. Harned  
ASSISTANT ENGINEER

BOOK 959 DATE 12-10-52  
DATE 1-9-53  
NO. 63  
W.O. G.B.  
D.B.

QUANTITIES  
PAVING COMP. 11-4-53  
C.C. 11-10-53

NO. 1  
1-10-53  
1-10-53  
1-10-53

By Paving Contractor  
C-1608



211 J. Haysach 7/19/53