

CONTRACT PW-41  
 DEPARTMENT OF PUBLIC WORKS DETROIT  
 CITY ENGINEER'S OFFICE - DIVISION OF PAVING DESIGN  
**STREET PAVING PLAN**  
**WHITCOMB**  
 FROM N.P.L. OF PICKFORD  
 TO S.P.L. OF SEVEN MILE ROAD

CARD NO. 106-288  
 NUMBER OF SHEETS 2  
 SHEET NO. 2

INDEX TO NO. 64  
 TOPO NO. 06  
 NAME OF STREET  
 RECORD NO. 106-288

DESIGNED BY	R <sup>2</sup>
DRAWN BY	A. Eaton
TRACED BY	A. Eaton
CHECKED BY	J.B.K.
APPROVED	<i>J.L. Barton</i>
ENGINEER OF STREETS	<i>W. J. Warren</i>
ASST. CITY ENGINEER	<i>Martin R. Fische</i>

HOR. SCALE	1" = 100'	BOOK	1584	PAGE	48
VER. SCALE	1" = 2'	DATE	2-10-45		
PLAN	A.E.	PROFILE	A.E.	COMPUTED	A.E.K.
CHECKED	J.B.K.	GRADE	R <sup>2</sup>	CHECKED	S.S.
LOTS	2L	236372	LENGTH	116186	
CITY	2L	140100	LENGTH	7000	
TOTAL	2L	250372	LENGTH	125186	
CITY					

QUANTITIES	ESTIMATED	LOTS	CITY	FINAL	CITY
EXCAVATION	CU. YDS.	2638	338		
NEW CURB	LIN. FT.				
PAVING	SQ. YDS.	5384	656		
SIDEWALK	SQ. FT.		1008		
MANHOLES	ADJUST		2		
BASINS	ADJUST		8		
SEWERS-12"	LIN. FT.				
SEWERS-15"	LIN. FT.				

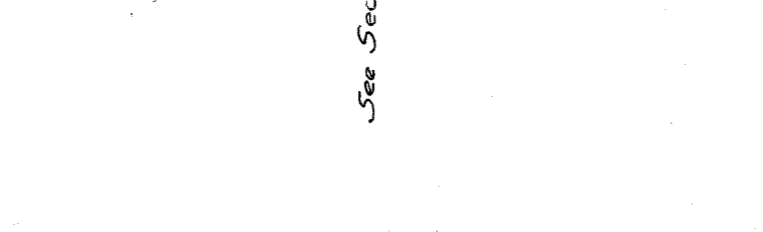
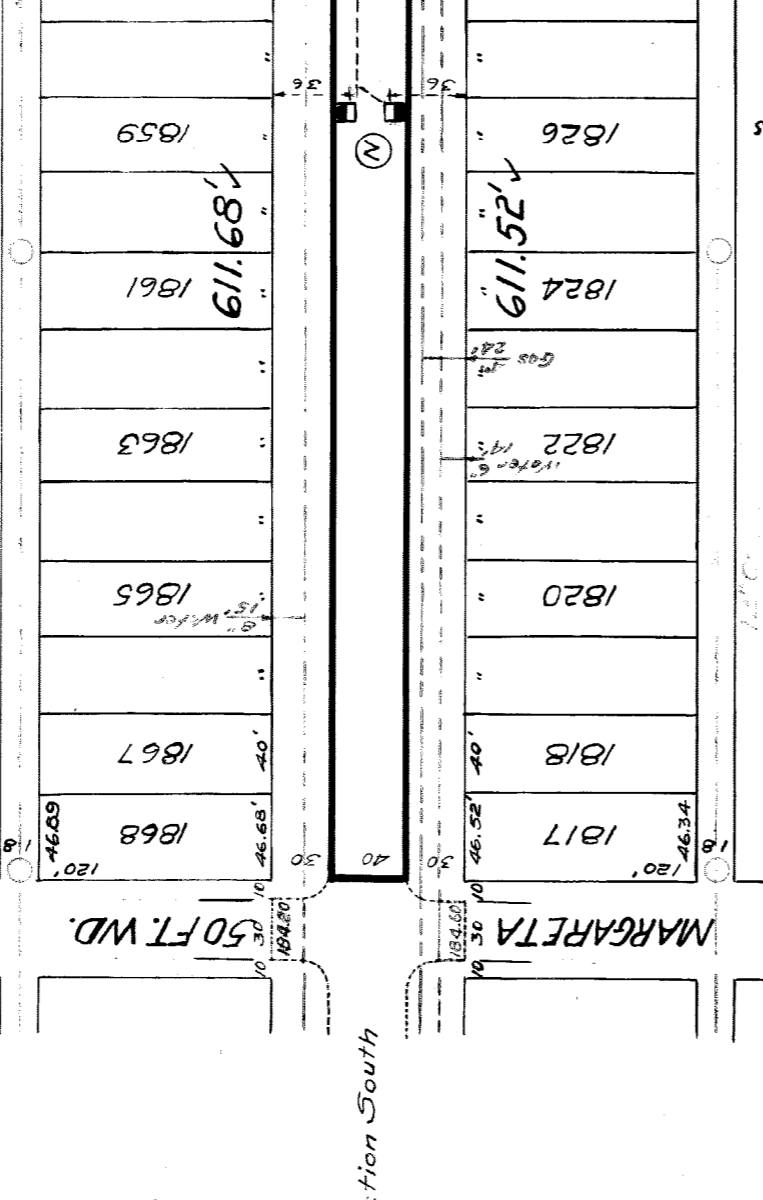
NOTE:	BEFORE STARTING CONSTRUCTION CONTRACTOR MUST CHECK WITH UTILITIES FOR LOCATIONS OF EXISTING STRUCTURES WHETHER OR NOT INDICATED ON PLANS.
PLAN SCALE DISTORTED	LOTS & ALLEYS 1" = 100'
STREET WIDTHS	1" = 100'
OLD DRAINAGE COMPLETED	4-17-42
DRAINAGE COMPLETED	
PAVING COMPLETED	4-12-47

\* TYPE OF PAVEMENT: 8" 6"-8" One Course Concrete Width 10'  
 Petition # 4312 dated 9-16-44 W.A. Stanley Et. Al.  
 C.C. Proceeds Majority Request 40 Ft Paving.  
 Pickford to 7 Mile  
 W.P.B. PERMIT NO. 22-11-19-72  
 Richard Sager et al  
 Clarita to 7 Mile

FORCE PAVE C.C.R 4-15-47

Note -  
 At (A) Adjust tops of Existing std Manholes.  
 (N) ABANDON EXISTING 18"-12" Y-BASINS AND CONSTRUCT AT CURB LOCATION STD. 8" 18"-12" Y-BASINS COMPLETE AND CONNECT TO EXISTING OUTLETS.  
 ALL CURBS WITHIN STREET INTERSECTION TO BE SEPARATE TYPE II INTEGRAL TYPE III CONTRACTOR SHALL GRADE BACK AT INTERSECTION TO DISTANCE SHOWN, TO FIT NEW PAVED SECTION. CONTRACTOR SHALL INCLUDE COST IN EXCAVATION TOTALS.  
 CONTRACTOR SHALL HAUL ALL OLD CASTINGS TO D.P.W. YARD AT STATE FAIR & JOHN R.  
 CONSTRUCT 1008 SQ. FT. OF 4" SIDEWALK

Bench Marks  
 ARROW ON HYD. COR. SW. WHITCOMB & MARGARETA  
 Arrow Top of Hydrant SW. Corner of Clarita & Whitcomb. --- 181.75  
 R.B.L. # 87,250A N.W. Corner of Whitcomb & 7 Mile Road. --- 183.77  
 Head hole in walk. --- 181.291



See Section South

For Continuation of Contract see Sh. A

6 FT. WALKS - 2 FT. OFF P.L.  
 6 FT. WALKS - 2 FT. OFF P.L.

6 FT. WALKS - 2 FT. OFF P.L.  
 6 FT. WALKS - 2 FT. OFF P.L.

6 FT. WALKS - 2 FT. OFF P.L.  
 6 FT. WALKS - 2 FT. OFF P.L.

6 FT. WALKS - 2 FT. OFF P.L.  
 6 FT. WALKS - 2 FT. OFF P.L.

411455

See Section South

For Continuation of Contract see Sh. A

6 FT. WALKS - 2 FT. OFF P.L.  
 6 FT. WALKS - 2 FT. OFF P.L.

6 FT. WALKS - 2 FT. OFF P.L.  
 6 FT. WALKS - 2 FT. OFF P.L.

6 FT. WALKS - 2 FT. OFF P.L.  
 6 FT. WALKS - 2 FT. OFF P.L.