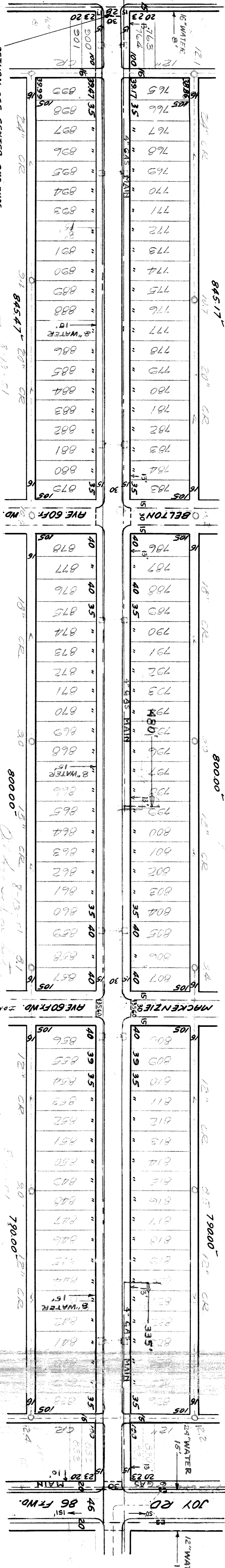
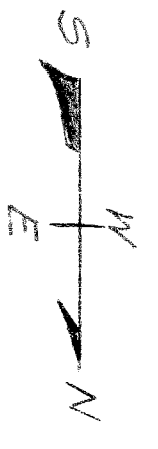


WHITCOMB AVE. 60' WD.
 FROM N.L. TIREMAN TO S.L. JOY RD.
 PAVED - CLASS "B" - 8" MAC. + 2 1/2" OIL AGG. - 1939

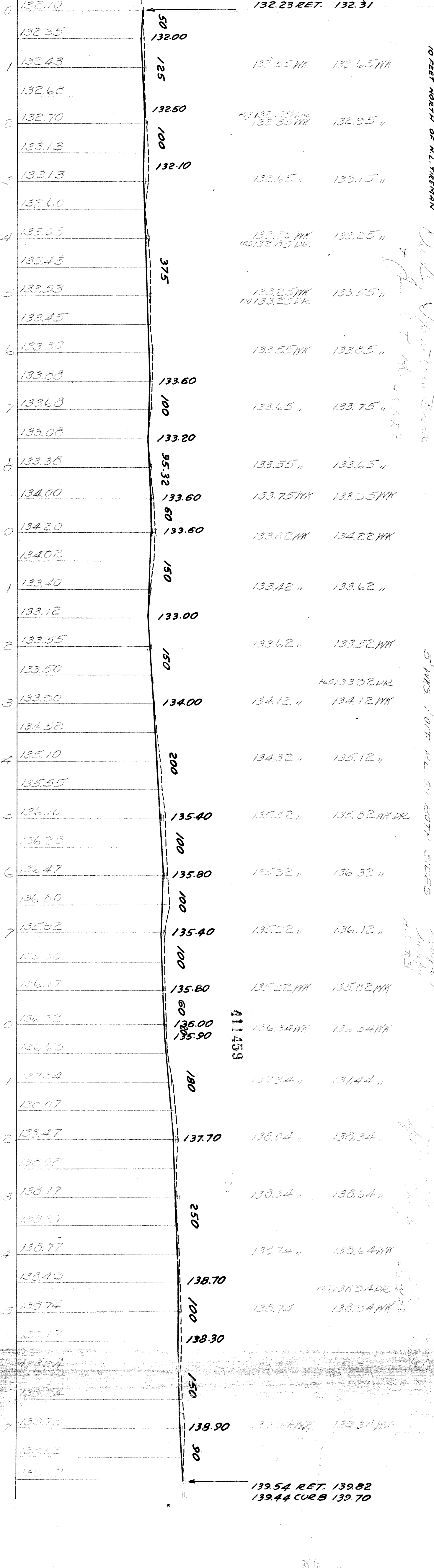
SUMF. MANHOLE
 BASIC PAVING

DEPARTMENT OF PUBLIC WORKS
 CIVIL ENGINEER'S OFFICE



SPM	24-32	100
PAVING	Uterilla	
ENGINEER	W.S. Uterilla	
DESIGNED BY		
DRAWN BY		
CHECKED BY		
APPROVED		

LOT	4	2	2
AREA	806.64	403.32	403.32
TOTAL	5,110.64	2,555.32	



DESIGNED BY *W. S. Uterilla* APPROVED _____
 DRAWN BY *J. S. Uterilla* ENGINEER OF STREETS
 TRACED BY _____
 CHECKED BY *W. S. Uterilla* ASSIST. CIVIL ENGINEER

SEWER LINE
 15" DIA. 10' DEPT.
 12" DIA. 10' DEPT.
 8" DIA. 10' DEPT.

GENERAL NOTES:
 1. SEE PLAN FOR LOCATION OF WHITCOMB & TIREMAN
 2. SEE PLAN FOR LOCATION OF BELT TON
 3. SEE PLAN FOR LOCATION OF MACKENZIE
 4. SEE PLAN FOR LOCATION OF JOY ROAD

135.20
 137.02
 137.32
 143.02

EXISTING POOLS & BASINS
 NEW

DRAINAGE COMPLETED
 PAVING COMPLETED 7-15-39