

DEPARTMENT OF PUBLIC WORKS DETROIT
CITY ENGINEER'S OFFICE DIVISION OF PAVING DESIGN
STREET PAVING PLAN

49-10 WESTWOOD
S.P.L. ORANGELAWN (EAST SIDE) ✓
S.P.L. ELMIRA ✓

FROM: S.P.L. ORANGELAWN (EAST SIDE) ✓
TO: S.P.L. ELMIRA ✓
SHEET 2 OF 2 SHEETS
WIDTH 30'

PET. # 4454 DEAN L. CULLUM 1-18-49 25% PAID

BENCH MARKS ELEV.
R.M. 110-207, ON W.S. EVERGREEN 50'S. OF W. CHICAGO IS A CROSS (X) ON THE E. END OF OF THE NORTH EASTERLY WINDOW OF A HOUSE. 140.404 ✓
ARROW ON HYD. S.E. COR. W. CH. 1. 8 PLAINVIEW. 142.09 ✓
ARROW ON HYD. N.E. COR. ORANGELAWN & W. CH. 1. 140.93 ✓
W. END OF S. CURB OF ELMIRA AT WESTWOOD 138.41 ✓

- NOTES:
- AT (A) CONSTRUCT 5 STANDARD 18"x12" FLAT TYPE BASINS COMPLETE & CONNECT TO EXISTING OUTLETS AS SHOWN.
 - AT (B) ABANDON EXISTING 12" BASIN, PLUG OUTLET WITH CLASS "C" CONCRETE & REMOVE OR FILL BASIN WITH CLASS "C" CONCRETE. CONSTRUCT 1 STANDARD 18"x12" FLAT TYPE BASIN COMPLETE & CONNECT AS SHOWN.
 - AT (C) CONSTRUCT 1 STD. MANHOLE COMPLETE.
 - AT (D) CONSTRUCT 1 STD. 12" DOME TYPE BASIN COMPLETE & CONNECT TO EXISTING MANHOLE AS SHOWN.
 - AT (E) CONSTRUCT 12 1/2" x 12 1/2" x 4" STANDARD 4" CONCRETE WALK.
 - AT (F) CONTRACTOR SHALL REMOVE CONCRETE HEADER & BROKEN ASPHALT BACK OF JUNCTION AS REQUIRED & FILL WITH COLD PATCH TO MEET NEW GRADES. 20 CU. YDS. INCLUDED UNDER EXCAVATION TOTALS FOR COST.
 - ADJUST TOPS OF 2 WATER MANHOLES.
 - BACKFILL SEWER PIPE TRENCHES UNDER PROPOSED PAVEMENT WITH APPROVED SAND GRAVEL MATERIAL ELSEWHERE FULL & TAMP WITH APPROVED EARTH LAYERS AS REQUIRED.
 - DIRT ROADWAYS & ALLEYS AT ENDS OF PAVEMENT & ALLEY RETURNS SHALL BE GRADED BACK & STONED 6" DEEP UNIFORMLY FOR A DISTANCE OF 10 FT. TO MEET EXISTING GRADES 18 CU. YDS. INCLUDED UNDER EXCAVATION TOTALS FOR COST.
 - CONTRACTOR SHALL FURNISH ALL NECESSARY MATERIALS INCLUDING CASTINGS & SHALL MAUL ALL SALVAGEABLE MATERIALS TO B.P.W. YARDS AT STATE FAIR & JOHN R. STS.
 - ALL CURBS WITHIN STREET INTERSECTION TYPE TO BE SEPARATE TYPE II OR INTEGRAL TYPE II (EXCEPT AS OTHERWISE NOTED)

DESIGNED BY: Haskbrook, D.L.
DRAWN BY:
CHECKED BY: S.P.L. Elmira ✓
APPROVED BY: S.P.L. Elmira ✓

BOOK 1447 PAGE 45
LEVEL 10-2-42
DATE DRAWN 1-49

PLAN SCALE 1"=2'
PROFILE SCALE 1"=2'
CHECKED: D.L. COMPUTED: S.S.
S.F.D. GRADE: D.B.

SEE SHEET 1 OF 2
SEE SHEET 1 OF 2

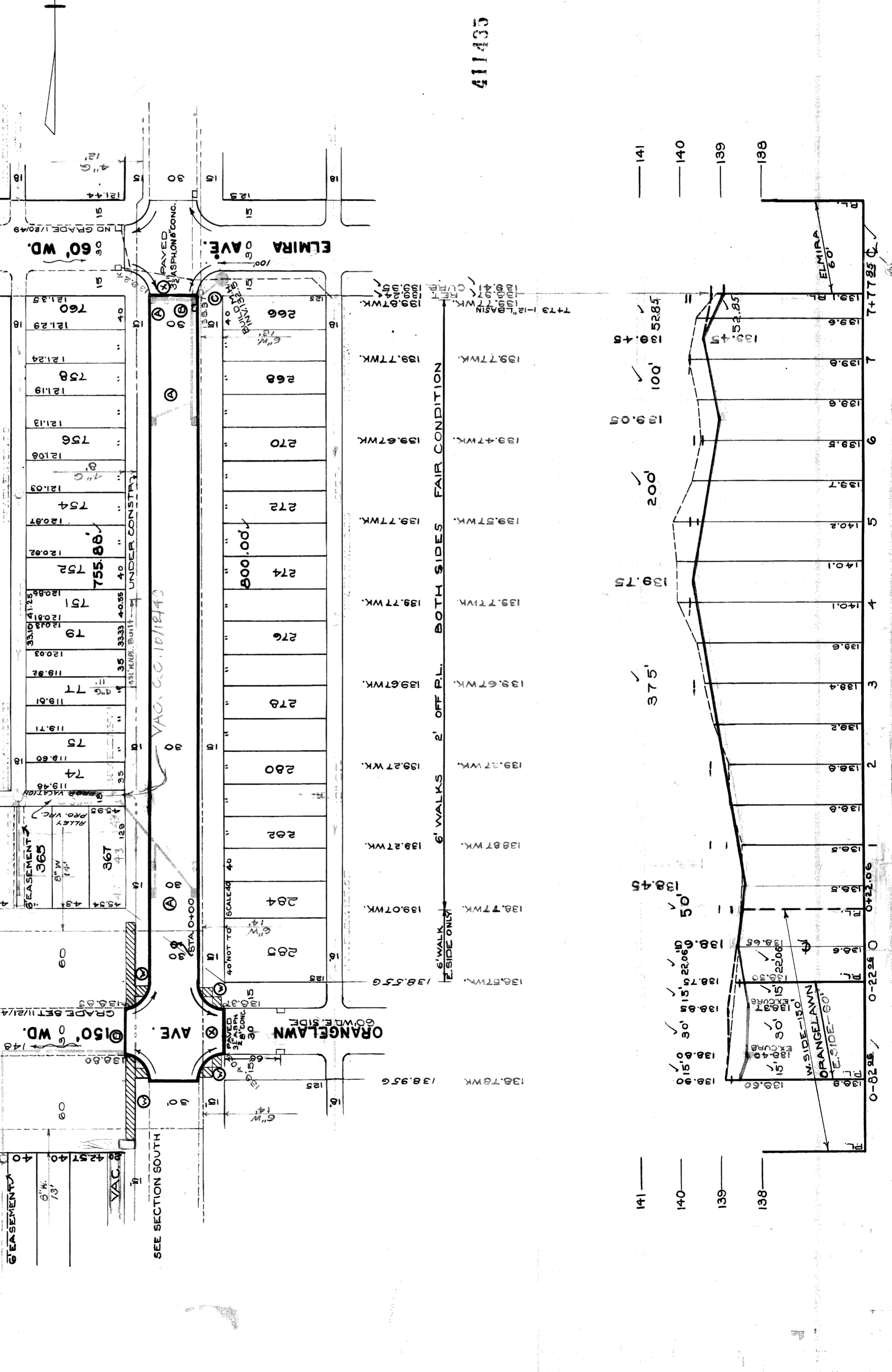
QUANTITIES
EXCAVATION CU. YDS.
NEW CURB LIN. FT.
PAVING SO. YDS.
SIDEWALK SQ. FT.
MANHOLES ADJUST. CONSTRUCT.
BASINS ADJUST. CONSTRUCT.
SEWER PIPES LIN. FT.

NOTE: BEFORE STARTING CONSTRUCTION CONTRACTOR MUST CHECK WITH UTILITIES FOR LOCATIONS OF EXISTING STRUCTURES WHETHER OR NOT INDICATED ON PLANE.
PLAN SCALE DISTORTED
LOTS & ALLEYS 1"=100'
STREET WIDTHS 1"=50'
DRAINAGE COMPLETED
PAVING COMPLETED C.C.B.-16-49

411435

6-6-49
Ally Cotton U.S. Railroad to be omitted
W.C. Wallace
John Hardy & Survey notified by phone
to eliminate alley return Benton

ESTIMATED LOTS	CITY	FINAL LOTS	CITY	QUANTITIES	CONTRACTOR
120.03		120.02		74	
119.92		119.91		75	
120.03		120.02		76	
121.13		121.13		77	
121.24		121.24		78	
121.29		121.29		79	
121.35		121.35		80	
121.44		121.44		81	
121.49		121.49		82	
121.54		121.54		83	
121.59		121.59		84	
121.64		121.64		85	
121.69		121.69		86	
121.74		121.74		87	
121.79		121.79		88	
121.84		121.84		89	
121.89		121.89		90	
121.94		121.94		91	
121.99		121.99		92	
122.04		122.04		93	
122.09		122.09		94	
122.14		122.14		95	
122.19		122.19		96	
122.24		122.24		97	
122.29		122.29		98	
122.34		122.34		99	
122.39		122.39		100	
122.44		122.44		101	
122.49		122.49		102	
122.54		122.54		103	
122.59		122.59		104	
122.64		122.64		105	
122.69		122.69		106	
122.74		122.74		107	
122.79		122.79		108	
122.84		122.84		109	
122.89		122.89		110	
122.94		122.94		111	
122.99		122.99		112	
123.04		123.04		113	
123.09		123.09		114	
123.14		123.14		115	
123.19		123.19		116	
123.24		123.24		117	
123.29		123.29		118	
123.34		123.34		119	
123.39		123.39		120	
123.44		123.44		121	
123.49		123.49		122	
123.54		123.54		123	
123.59		123.59		124	
123.64		123.64		125	
123.69		123.69		126	
123.74		123.74		127	
123.79		123.79		128	
123.84		123.84		129	
123.89		123.89		130	
123.94		123.94		131	
123.99		123.99		132	
124.04		124.04		133	
124.09		124.09		134	
124.14		124.14		135	
124.19		124.19		136	
124.24		124.24		137	
124.29		124.29		138	
124.34		124.34		139	
124.39		124.39		140	
124.44		124.44		141	



411435