

CONTRACT NO. P.W. 790
 DEPARTMENT OF PUBLIC WORKS DETROIT
 CITY ENGINEER'S OFFICE --- DIVISION OF PAVING DESIGN

19-11 STREET PAVING PLAN

ASSIGNMENT NO. 325 H-20
 NAME OF STREET: WESTMORELAND RD.
 FROM: S.P.L. CLARITA AVE. ✓
 TO: 40' N. S.P.L. OF SEVEN MI. RD. ✓

CARD NO. (X)
 INDEX TO NO. 72 114
 RECORD NO. O

TYPE OF PAVEMENT: ONE COURSE CONCRETE-INTEGRAL CURB WIDTH 30 & 36
 8" UNIFORM AT STREET INTERSECTIONS

RET. NO. 1437 WINTON LVELLY 5-11-48 CLARITA TO 7 MI.



BENCH MARKS

P.B.M# 115-256-A N.E. COR. WESTMORELAND & 7 MI. ROAD 161.104
 B.M. - ARROW ON HYD. AT S.W. COR. WESTMORELAND & CLARITA 162.63
 B.M. - ARROW ON HYD. AT #18985 WESTMORELAND 164.14

- NOTE:
 ✓ ALL CURB WITHIN STREET INTERSECTIONS TO BE SEPARATE-TYPE II OR INTEGRAL-TYPE III (EXCEPT AS OTHERWISE NOTED)
 ✓ AT (A) CONSTRUCT 960 SQ. FT. OF STANDARD 4" SIDEWALK.
 ✓ AT (B) ADJUST TOPS OF 6 EXISTING 18"x12" Y. BASINS WITH FLAT TYPE GRATES AND FRAMES.
 ✓ AT (C) RECONSTRUCT EXISTING BASIN, AT NEW LOCATION, WITH 1 STANDARD 18"x12" Y-DOME TYPE BASIN. CONNECT TO EXISTING OUTLET AS SHOWN.
 ✓ AT (D) CONSTRUCT 36 FT. RETURN WITH TYPE II CURBS 20 FT. RAD. (1/2 FT. WIDENING STRIPS). SLAB TO BE 9" IN THICKNESS. (SEE DETAIL DWG. #C-733)
 ✓ CONTRACTOR SHALL CONSTRUCT UNIFORM DITCHES, WHERE SHOWN ON PLAN, TO DEPTHS REQUIRED IN FIELD. 6 CU. YDS. - INCLUDED UNDER EXCAVATION TOTALS FOR COST.
 ✓ ADJUST TOPS OF 2 WATER MANHOLES.

DIRT ALLEYS & ROADWAYS AT ENDS OF PAVEMENT SHALL BE GRADED BACK AND STONED 6" DEEP UNIFORMLY, FOR A DISTANCE OF 10 FT., TO MEET EXISTING GRADES. 8/ CU. YDS. - INCLUDED UNDER EXCAVATION TOTALS FOR COST.
 ✓ CONTRACTOR SHALL FURNISH ALL NECESSARY MATERIALS, INCLUDING CASTINGS & SHALL HAUL ALL SALVAGEABLE MATERIALS TO D.P.W. YARD AT STATE FAIR & JOHN R. STS.
 ✓ ADJUST TOPS OF 3 SEWER MANHOLES.
 ✓ RECONSTRUCT CONE OF 1 SEWER MANHOLE.

DESIGNED BY	L.G. VANTUYL
DRAWN BY	H.E. EVANS
TRACED BY	H.E. EVANS
CHECKED BY	<i>Richard Fisher</i>
APPROVED	<i>Richard Fisher</i> ENGINEER OF STREETS ASST. CITY ENGINEER

NOR. SCALE	1" = 100'
VER. SCALE	1" = 2'
PLAN	H.E.E.
CHECKED	A.R.
CITY	DEPT. OF PAVING
TOTAL	177660'
DATE	3-20-48
NO. COMPUTED	780 30'
CHECKED	108 00'
LOT LENGTH	888 30'
LOT WIDTH	

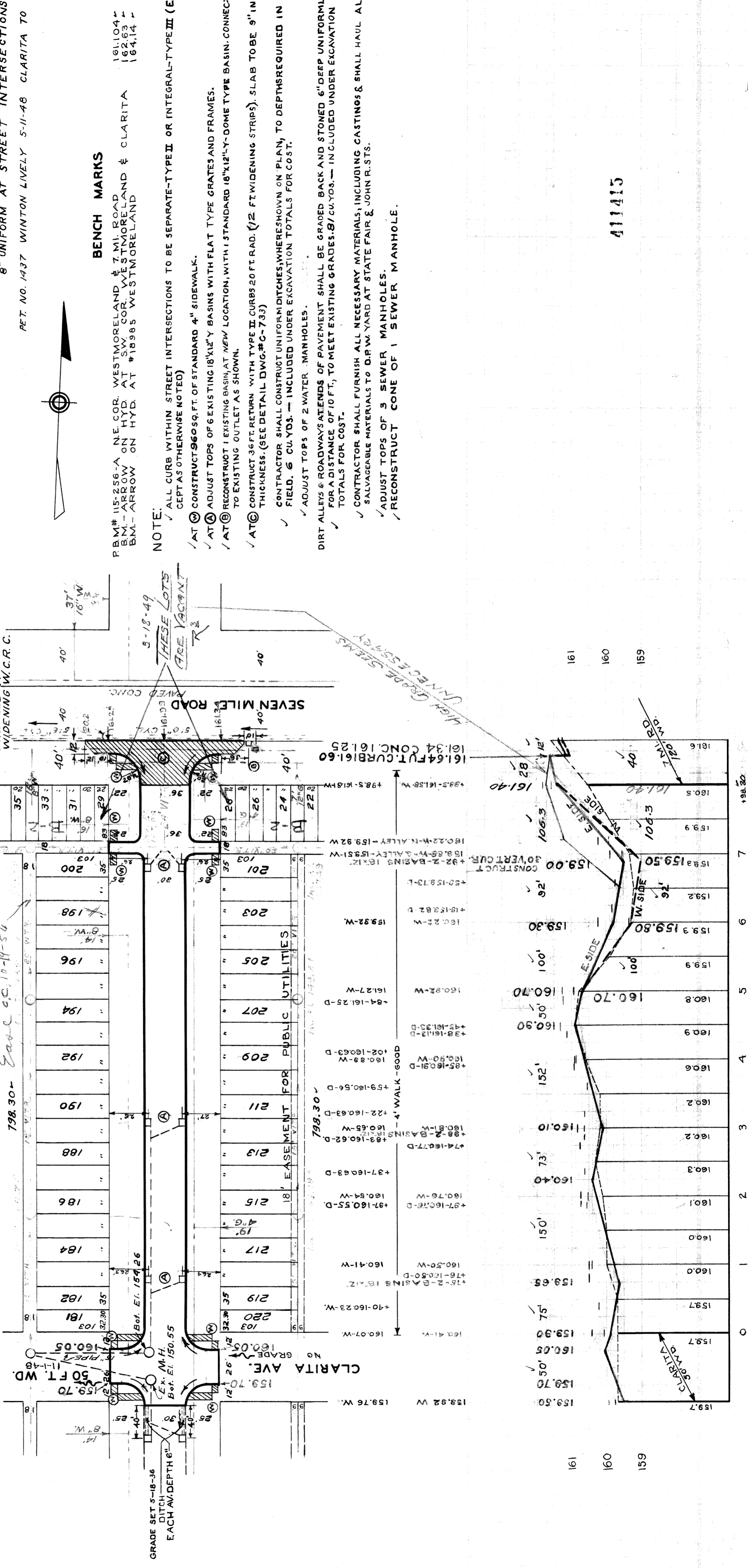
QUANTITIES	ESTIMATED	FINAL	CITY
EXCAVATION CU. YDS.	909	909	357
NEW CURB LIN. FT.	79	79	83
PAVING SQ. YDS.	2743	167	167
SIDEWALK SQ. FT.	960	1258	1258
MANHOLES	3	3	3
SEWERS 12" LIN. FT.	6	6	6
SEWERS 18" LIN. FT.	10	10	10
6" CONC. DR. 30' FT.	0	0	0
8" CONC. DR. 30' FT.	337	337	337

NOTE: BEFORE STARTING CONSTRUCTION CONTRACTOR MUST CHECK WITH UTILITIES FOR LOCATIONS OF EXISTING STRUCTURES WHETHER OR NOT INDICATED ON PLANS.

PLAN SCALE DISTORTED
 LOTS & ALLEYS 1" = 100'
 STREET WIDTHS 1" = 50'

BY W.P.A. 1939
 DRAINAGE COMPLETED SEPT. 1939
 PAVING COMPLETED C.C. 9-20-49

SEWER	REVISIONS OLD MAP	CHANGED QUANTITIES	REVISIONS
	5-16-36	3/3/49	3/3/49
	C-324-A	C-325	
	C-326-A	C-327	C-390
	C-585	C-586	C-733
	C-739-A	C-739-B	C-928
			C-587



411415

Copy 4/11 2/25/49