

DEPARTMENT OF PUBLIC WORKS DETROIT  
 CITY ENGINEER'S OFFICE -- DIVISION OF PAVING DESIGN  
**STREET PAVING PLAN**

PROJECT NO. **325-98-26**  
 SHEET NO. **638 G**

NAME OF STREET **WESTFIELD**  
 GROUP **E.P.L. OF OHIO**

NAME OF ENGINEER **W.P.L. OF ROSELAWN**

DATE **7-5-49**

SCALE **30'**

APPROVED BY **Martin R. Fisher**  
 DEPUTY CITY ENGINEER

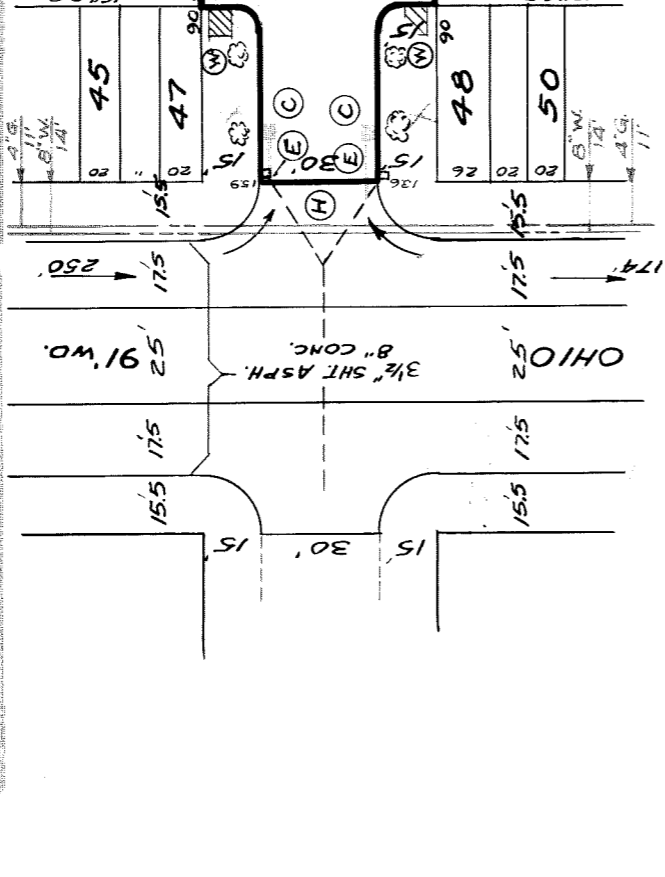
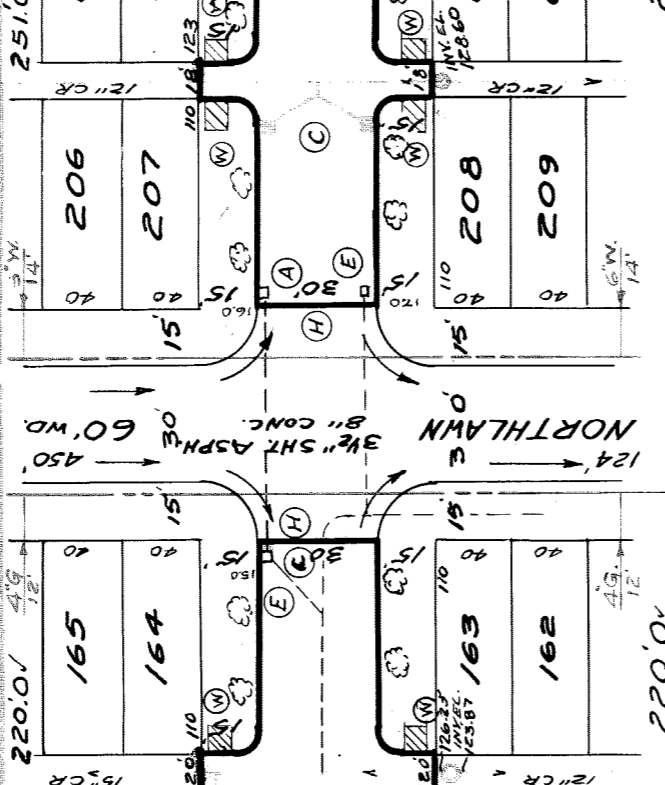
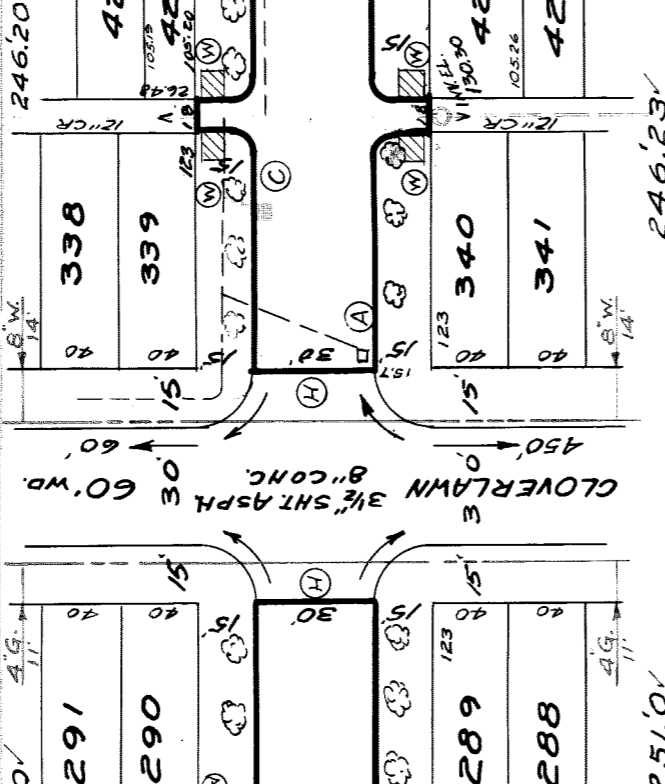
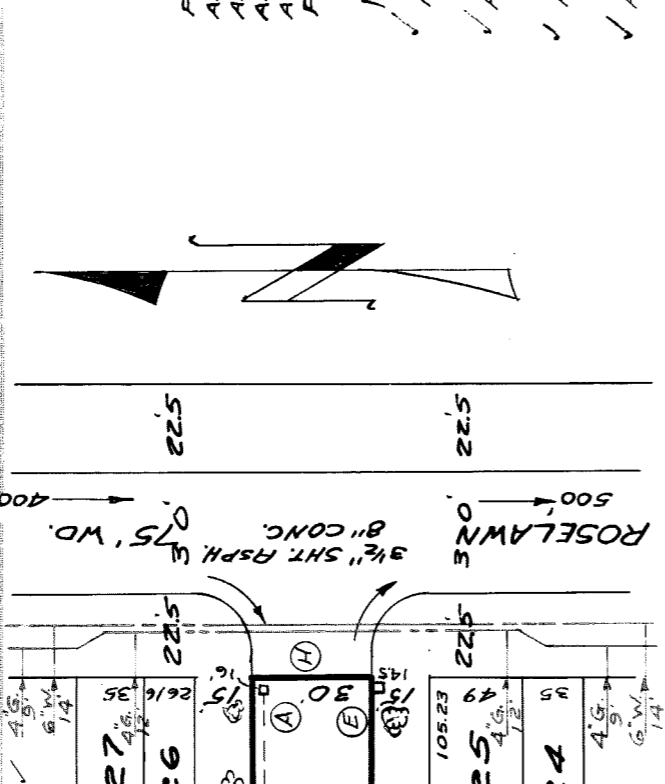
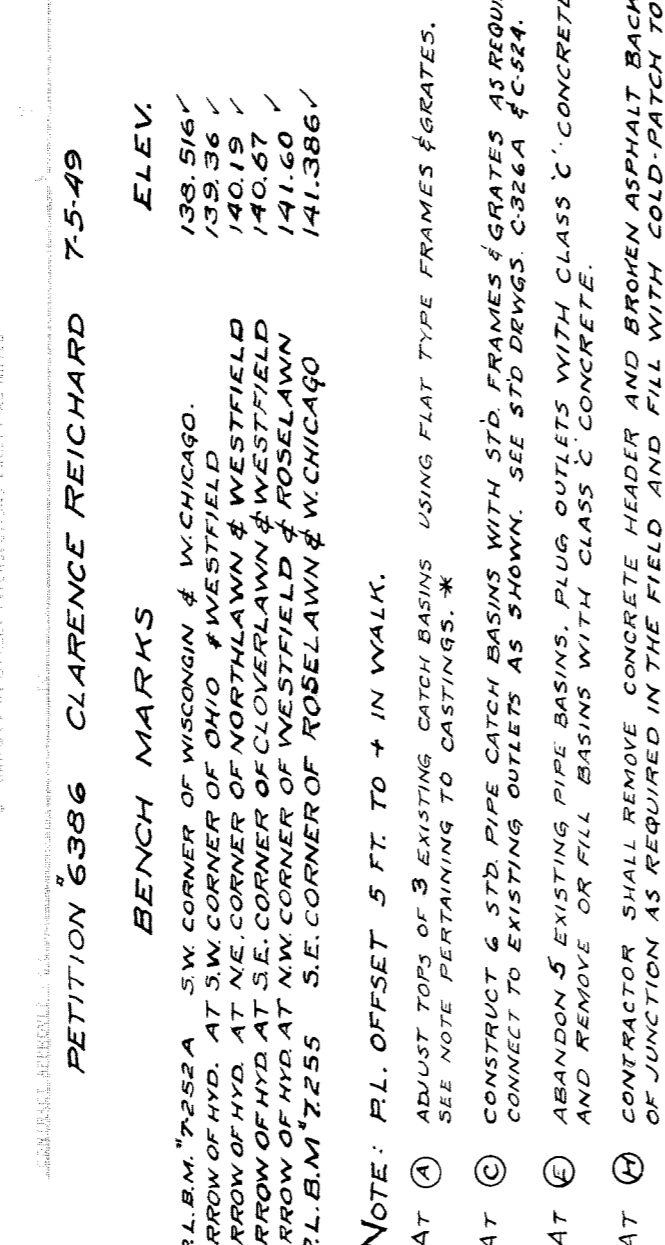
REVISED BY	DATE	REASON
S.E. DAVIS	12-1-49	12-1-49
J.R. HARRIS	1-20-50	1-20-50

NO.	DATE	BY	REVISION
567	6-6-49	J.R.H.	CONTRACT
567	7-17-49	J.R.H.	CONTRACT

QUANTITIES	ESTIMATED	FINAL	CITY	LOTS
EXCAVATION, CU YDS.	1097	1097	360	1097
NEW CURB	2278	2278	386	2278
PAVING, SQ YDS.	868	868	201	201
6" CONC. DR. SFT.	4	4	432	432
SEWER, LN. FT.	1	1	35	35
MANHOLES, CONC.	3	3	6	6
BASES	101	101	84	84

SEWER	REVISIONS
C-324A	C-567
C-325	C-733
C-326A	C-739
C-327	C-739A



**NOTE: P.L. OFFSET 5 FT. TO 4 IN WALK.**

- ✓ AT (A) ADJUST TOPS OF 9 EXISTING CATCH BASINS USING FLAT TYPE FRAMES & GRATES. SEE NOTE PERTAINING TO CASTINGS. \*
- ✓ AT (C) CONSTRUCT 6 STD PIPE CATCH BASINS WITH STD FRAMES & GRATES AS REQUIRED. CONNECT TO EXISTING OUTLETS AS SHOWN. SEE STD DRWGS. C-326A & C-324.
- ✓ AT (E) ABANDON 5 EXISTING PIPE BASINS. PLUG OUTLETS WITH CLASS 'C' CONCRETE AND REMOVE OR FILL BASINS WITH CLASS 'C' CONCRETE.
- ✓ AT (H) CONTRACTOR SHALL REMOVE CONCRETE HEADER AND BROKEN ASPHALT BACK OF JUNCTION AS REQUIRED IN THE FIELD AND FILL WITH COLD-PATCH TO MEET NEW GRADES. 60 CU YDS. INCLUDED UNDER EXCAVATION FOR COSTS.
- ✓ AT (M) CONSTRUCT 42 39" DIA. OF STANDARD 4" SIDEWALK.

✓ ADJUST TOPS OF 3 SEWER MANHOLES. RECONSTRUCT CONE OF 1 SEWER MANHOLE, IF NECESSARY.

✓ ADJUST TOPS OF 1 WATER MANHOLE

✓ BACKFILL SEWER PIPE TRENCHES UNDER PROPOSED PAVEMENT WITH APPROVED SAND-GRAVEL MATERIAL, ELSEWHERE FILL & TAMP WITH APPROVED EARTH LAYERS AS REQUIRED.

✓ DIRT ALLEYS AT ENDS OF PAVEMENT SHALL BE GRADED BACK AND STONED 6" DEEP UNIFORMLY FOR A DISTANCE OF 10 FT. TO MEET EXISTING GRADES. 72 CU YDS. INCLUDED UNDER EXCAVATION TOTALS FOR COST.

\* CONTRACTOR SHALL FURNISH NEW CASTINGS FOR ALL ADJUSTED BASINS & MANHOLES EXCEPT WHEN SALVAGED CASTINGS ARE AVAILABLE AND THEIR USE PERMITTED BY THE ENGINEER. A DEDUCTION OF \$1500 FOR EACH TOP SO USED SHALL BE MADE FROM THE ORIGINAL CONTRACT PRICE. OTHERWISE THE SALVAGED CASTINGS MUST BE HAULLED TO D.P.W. YARDS AT STATE FAIR & JOHN R. STS.

