

DEPARTMENT OF PUBLIC WORKS DETROIT
CITY ENGINEER'S OFFICE DIVISION OF PAVING DESIGN
STREET PAVING PLAN

NAME OF STREET
WESTBROOK

FROM **S.P.L. OF ST. MARTINS**
TO **N.P.L. OF PEMBROKE**

DESIGNER: **AUSTIN J. DELANEY 3-20-51**

BENCH MARKS
ARROW ON HYD. N.W. COR. ST. MARTINS & WESTBROOK
ARROW ON HYD. N.W. COR. PEMBROKE & WESTBROOK

NOTE:
P.L. OFFSET 5 FT. TO (+) IN WALK:
FOR SYMBOLS @ ETC. SEE STD. DET. DWG. C-327

ELEV.
160.01
165.06

CONTRACT NO. 51-11
INDEX TO NO. 72 115
RECORD NO. 1

ASSIGN NO. 325-AU-24
PETITION NO. 552-8

ONE COURSE CONCRETE - INTEGRAL CURB
8" UNIFORM AT STREET INTERSECTIONS EXCEPT AS NOTED

DESIGNED BY **L. Naitach**
DRAWN BY
TRACED BY
CHECKED BY
APPROVED BY **S. L. Bratton**
W. S. Wallace
M. J. Maguire

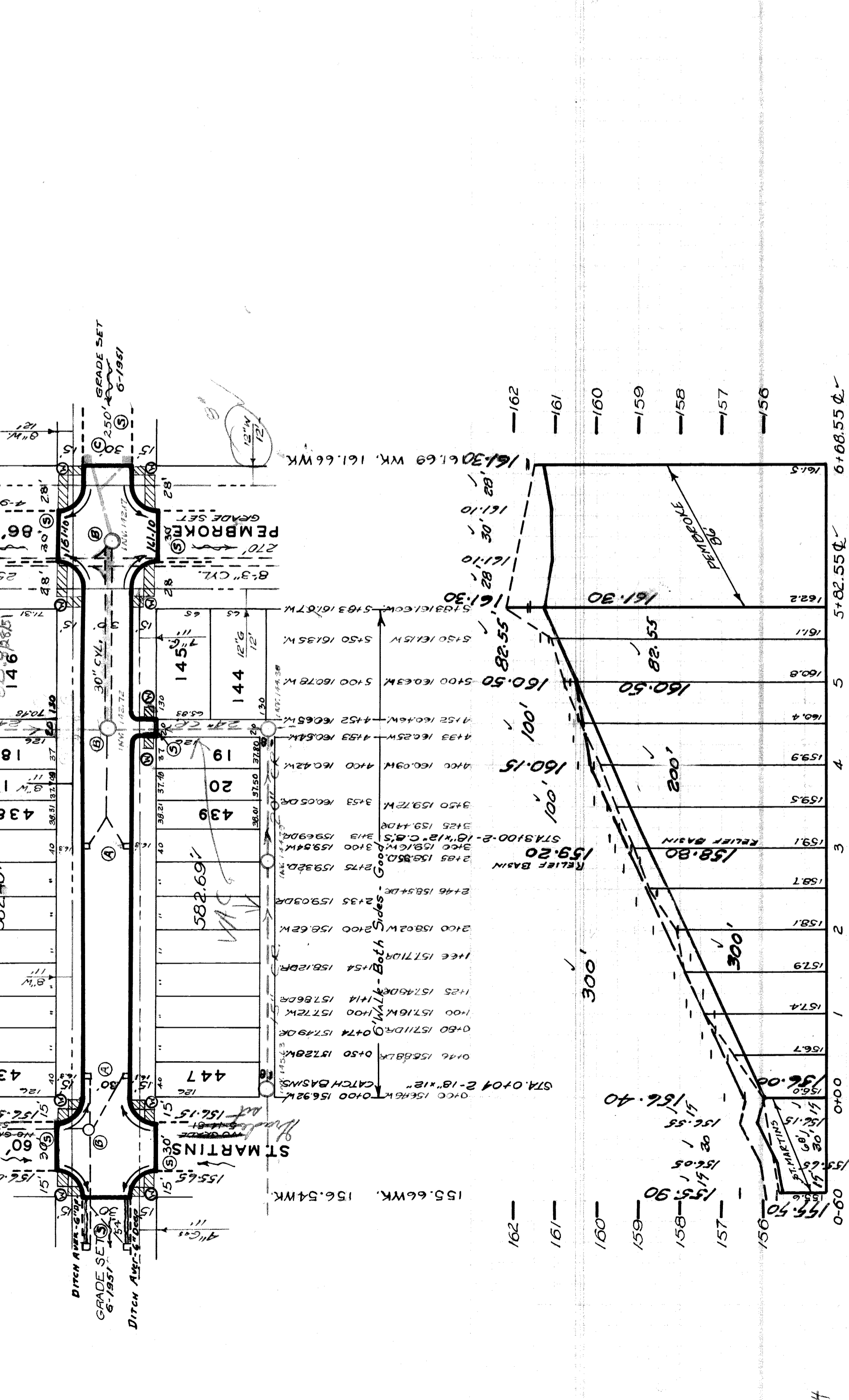
BOOK 1694 PAGE 40
LEVELS 3-30-51
DATE DRAWING 5-1-51
PROFILE 5-11
CHECKED 5-11
GRADE 9-5
CITY 562 55
LENGTH 332 00
CITY 166 00
TOTAL 1457 09
LENGTH 720 55

LOT NO. 787
CITY 537
ESTIMATED 1938
CITY 104
QUANTITIES 743
CITY 100
EXCAVATION CU YDS 152
NEW CURB LIN. FT. 36
PAVING SQ. YDS 35
8" UNIF. 4
6" CONC. OR 5" FT. 2
SIDEWALK 4" SQ. FT. 15
MANHOLES ADJUST 1
CONC. CONSTRUCT 4
BASINS ADJUST 2
CONSTRUCT 75
SEWERS 18" LIN. FT. 15

NOTE:
BEFORE STARTING CONSTRUCTION CONTRACTOR
MUST CHECK WITH UTILITIES FOR LOCATIONS OF
EXISTING STRUCTURES WHETHER OR NOT INDICATED
ON PLANS.

PLAN SCALE DISTORTED
LOTS & ALLEYS 1"=100'
STREET WIDTHS 1"=50'
DRAINAGE COMPLETED 8-14-50
PAVING COMPLETED C.C. 1-2-52

REVISIONS
OLD MAP 6-14-40
C-324A C-390 C-587 C-739B
C-325 C-524 C-733 C-938
C-326A C-585 C-739 C-1609
C-327 C-586 C-739A



411402