

DEPARTMENT OF PUBLIC WORKS DETROIT CITY ENGINEERS' OFFICE DIVISION OF PAVING DESIGN STREET PAVING PLAN

WEST PARKWAY 33 S.N.P.L. W. CHICAGO N.P.L. ORANGELAWN

REQ. #2124 716148 CHICAGO TO ORANGELAWN REQUESTED BY FRISCHKORN REALTY CO. 8-7-44

BENCH MARKS P.L.B.M. #118-251 N.E. COR. W.PARKWAY & W.CHICAGO

- ABANDON 4 EXISTING 18"x12" BASINS. PLUG OUTLETS WITH CLASS "C" CONCRETE AND REMOVE OR FILL BASINS WITH CLASS "C" CONCRETE. ADJUST TOPS OF 4 EXIST. 18"x12" BASINS WITH FLAT TYPE FRAMES AND GRATES. ADJUST 4 STD. 18"x12" DOME TYPE BASINS IF NECESSARY. CONSTRUCT 1896 SQ. FT. OF STANDARD 4" CONCRETE WALK. CONTRACTOR SHALL CONSTRUCT UNIFORM DITCH, WHERE SHOWN ON PLAN TO DEPTH REQUIRED IN FIELD. 16 CU.YDS. INCLUDED UNDER EXCAVATION TOTALS FOR COST. ADJUST TOPS OF 1 WATER MANHOLE. ADJUST TOPS OF 4 EXISTING SEWER MANHOLES & RECONSTRUCT CONE OF 1 EXISTING SEWER MANHOLE IF NECESSARY. BACKFILL SEWER PIPE TRENCHES UNDER PROPOSED PAVEMENT WITH APPROVED SAND GRAVEL MATERIAL; ELSEWHERE FILL AND TAMP WITH APPROVED EARTH LAYERS AS REQUIRED. DIRT ROADWAYS AND UNPAVED ALLEYS AT ENDS OF PAVEMENT SHALL BE GRADED BACK AND STONED 6" DEEP UNIFORMLY, FOR A DISTANCE OF 10 FT. TO MEET EXISTING GRADES. 75 CU.YDS. INCLUDED UNDER EXCAVATION TOTALS FOR COST. CONTRACTOR SHALL FURNISH ALL NECESSARY MATERIALS INCLUDING CASTINGS AND SHALL HAUL ALL SALVAGEABLE MATERIALS TO D.P.W. YARD AT STATE FAIR & JOHN E. STREETS. ALL CURBING WITHIN STREET INTERSECTIONS TO BE SEPARATE TYPE II OR INTEGRAL TYPE III. (EXCEPT AS OTHERWISE NOTED). CONSTRUCT 90 FT. RETURN WITH TYPE II CURBS, 20 FT. RADIUS, 8" UNIF. CONCRETE AND 18" WIDENING STRIP WITH 5 1/2" 9" UNIF. CONCRETE. SEE DRWG. C-733.

DESIGNED BY G.W. Schaad DRAWN BY G.W.S. CHECKED BY J.P. Banton

Table with columns: GWS, SFD, GRADE, J.P., C.B., LENGTH, AREA, VOLUME, CITY

Table with columns: QUANTITIES, ESTIMATED, FINAL, CITY, LOTS

NOTE: BEFORE STARTING CONSTRUCTION CONTRACTOR MUST CHECK WITH UTILITIES FOR LOCATIONS OF EXISTING STRUCTURES WHETHER OR NOT INDICATED ON PLANS.

Table with columns: SUPPLEMENTARY DETAILS, C-324A, C-325, C-326A, C-327

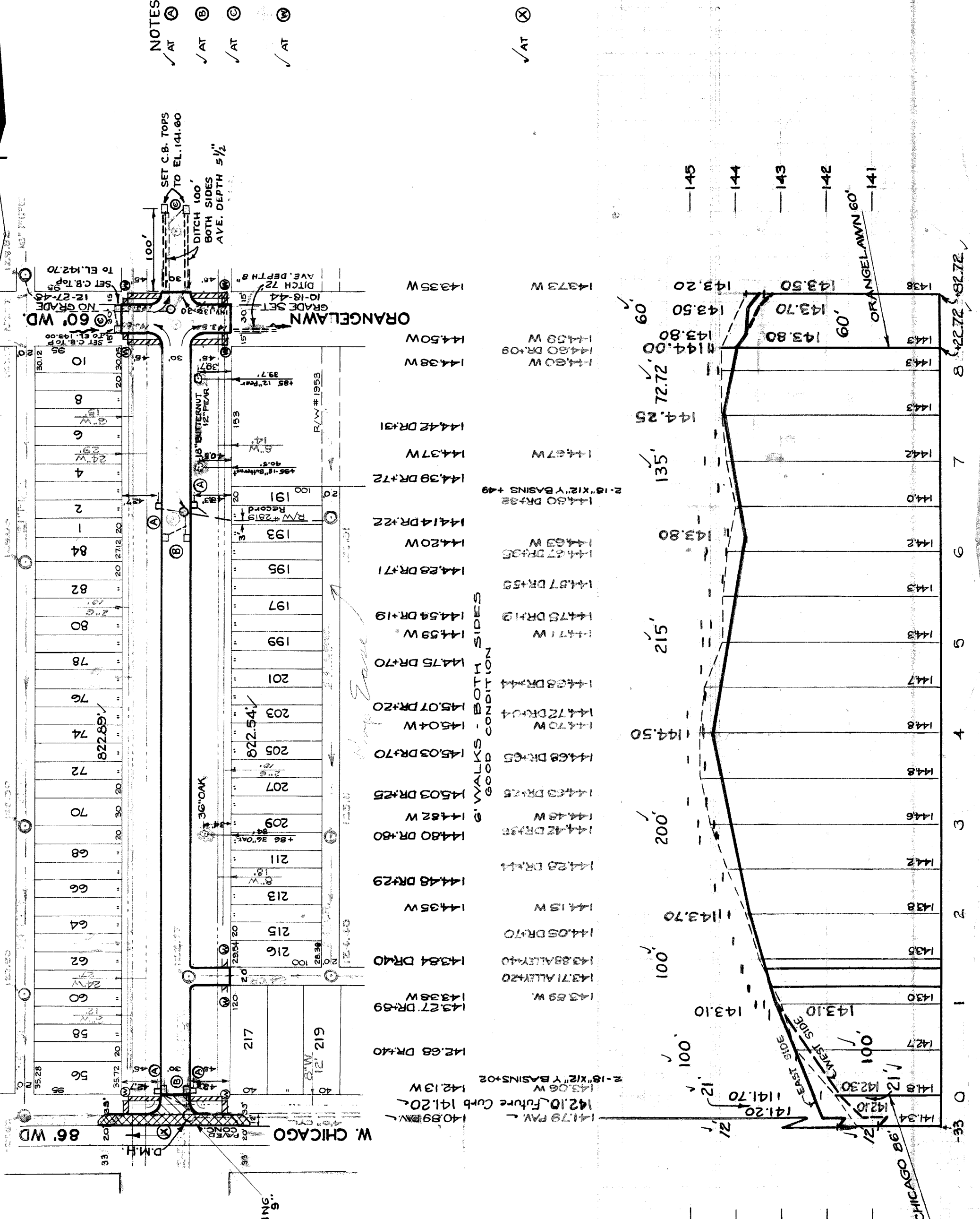


Table with columns: LOT NO., AREA, VOLUME, CITY, LOTS

411385