

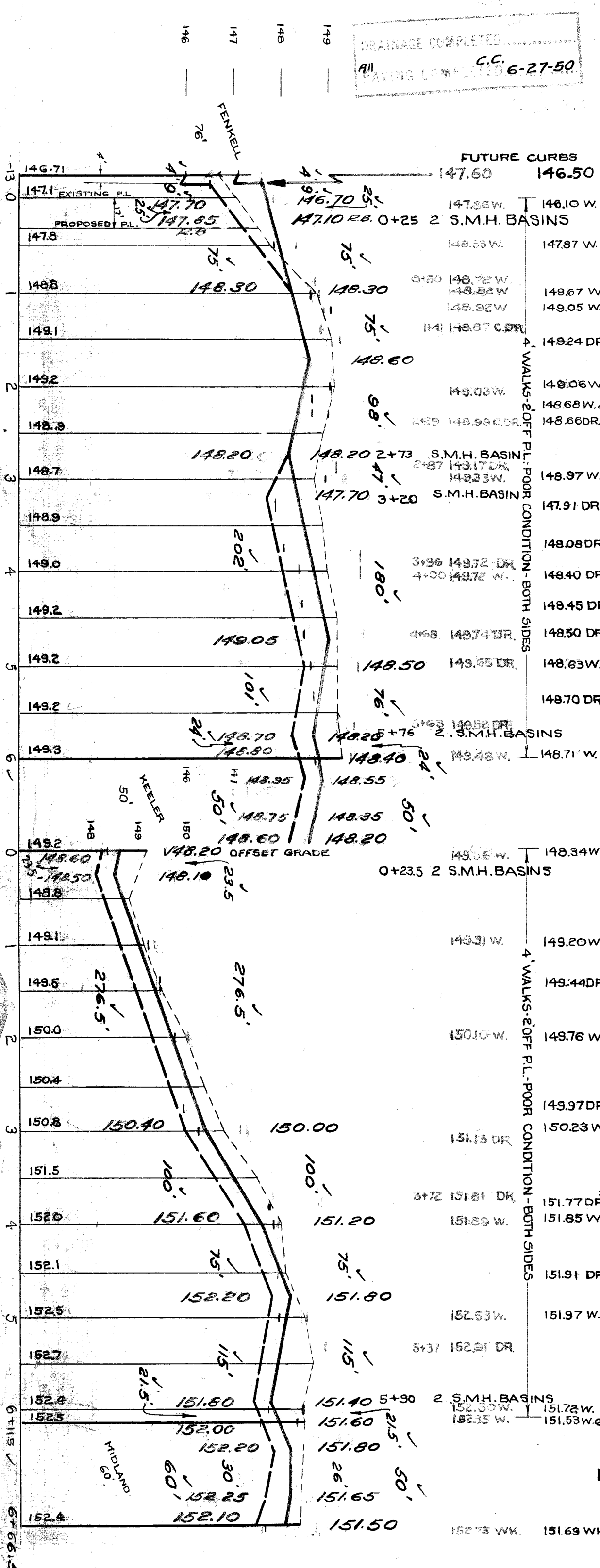
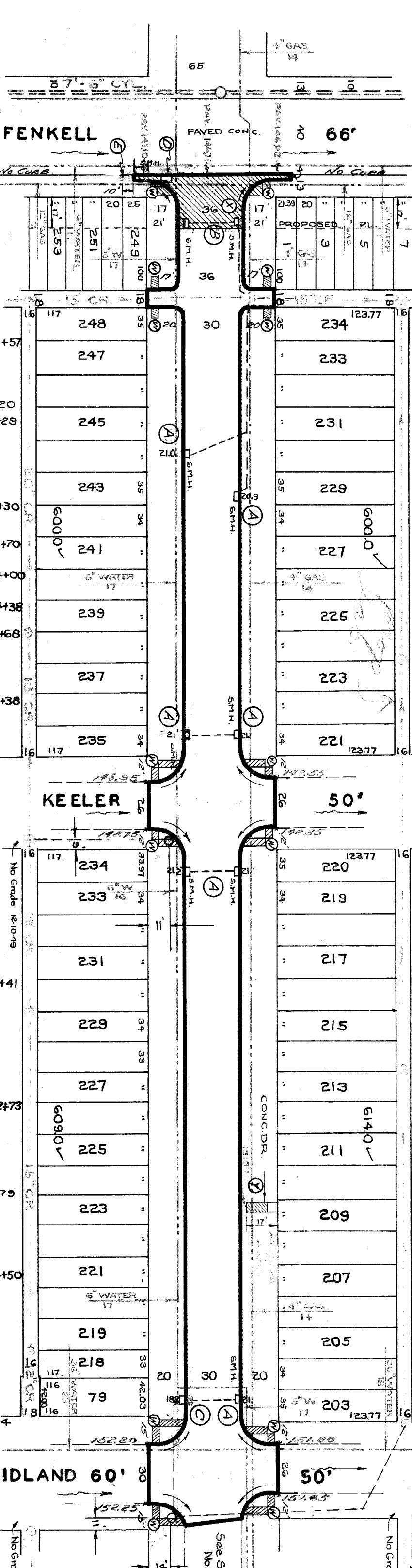
STREET PAVING PLAN

WEST PARKWAY

N.P.L. OF MIDLAND

CARD NO.	50-4
INDEX TOPO NO.	73
INDEX NO.	121
NAME OF STREET	13 S. OF - N.P.L. OF FENKELL
FROM	N.P.L. OF MIDLAND
TO	
TYPE OF PAVEMENT	6"-8" ONE COURSE CONCRETE INTEGRAL CURB
WIDTH	30' @ 36'
A.P.-1-77	NUMBER OF SHEETS 2
	SHEET NO 1

SEWER/S.M.H. BASINS INSTALLED 10-29-38	JOB NO.	QUANTITIES	LOTS	CITY	LOTS	CITY	BOOK 1733 PAGE 8	DESIGNED BY	DRAWN BY	CHECKED BY	APPROVED BY
INDEXED	BLUE PRINT ISSUED FOR:	EXCAVATION	5042	828	5042	828	11-10-43	Anna Pinkney		G.S.	
REVISIONS: Plan revised to new levels	DATE	TYPE II CURB	34	40	34	40					
Grade & notes revised 12/19 3FD	START	UNIFORM PAVING SYD	1	1	1	1					
	FINISH	TREE 20' EA.	1	1	1	1					
		12" SEWER PIPE LIFT	100	100	100	100					
		6" CONC. OR. SQ. FT.	8767	107	8767	107					
		PAVING 8" UNIF.	68	155	68	155					
		M. HOLE CONE RECON	2	2	2	2					
		WALKS - 50 FT.	2	2	2	2					
		M.H.S. - ADJUST.	4	4	4	4					
		C.B.S. - ADJUST.	19	19	19	19					
		COST ADVERTISING BLANKS									
		COST INSPECTION									



**BENCH MARKS**  
 147.462 ✓  
 150.75 ✓  
 152.36 ✓  
 151.38 ✓

**NOTE:**  
 1. ADJUST TOPS OF EXISTING CATCH BASINS USING FLAT TYPE FORMS & GATES. SEE NOTE DETERMINING TO CASTINGS.\*  
 2. CONSTRUCT 2 STD. PIPE CATCH BASINS COMPLETE WITH 24" TYPE BENCH MARKS & 6" CLASS 2" CONCRETE DRIVEWAY. GATING TO EXISTING S.M.H. AS SHOWN. SEE DETAIL B, STD. DRAIN C-390. SEE NOTE PERTAINING TO CASTINGS.\*  
 3. ABANDON EXISTING S.M.H. BASIN. PLUG OUTLET WITH CLASS 2" CONCRETE. REMOVE 300 CONSTRUCT 1 STD. PIPE CATCH BASIN WITH STD. FRAME & GATE AS REQUIRED. C-326 & C-324.  
 4. ABANDON EXISTING S.M.H. BASIN. PLUG OUTLET WITH CLASS 2" CONCRETE. REMOVE 300 CONSTRUCT 1 STD. PIPE CATCH BASIN WITH STD. FRAME & GATE AS REQUIRED. C-326 & C-324.  
 5. CONSTRUCT 1 STD. PIPE CATCH BASIN WITH STD. FRAME & GATE AS REQUIRED. C-326 & C-324.  
 6. CONSTRUCT 134 SQ. FT. OF STANDARD 4" SIDEWALK.  
 7. CONSTRUCT 36 FT. RETURN OF 8" UNIFORM CONCRETE WITH TYPE II CURBS, 18" TYPICAL AND 8" TYPICAL WIDENING STRIP OF 8" UNIFORM CONCRETE. SEE STD. DRAWG. C-753.  
 8. ADJUST TOPS OF EXISTING SEWER MANHOLES. RECONSTRUCT CONE OF 1 SEWER MANHOLE, IF NECESSARY.  
 9. ADJUST TOPS OF 2 WATER MANHOLES.  
 10. REBUILD 90 SQ. FT. OF 6" CLASS 2" CONCRETE DRIVEWAY.  
 11. BACKFILL SEWER PIPE TRENCHES UNDER PROPOSED PAVEMENT WITH APPROVED SAND GRAVEL MATERIAL, ESTABLISH FILL & TAMP WITH APPROVED EMERY LAYERS AS REQUIRED.  
 12. DIET ROADWAYS & ALLEYS AT ENDS OF PAVEMENT SHALL BE GRADED BACK TO 10' TO MEET EXISTING GRADES. 99' C.V. YOS INCLUDED UNDER EXCAVATION TOLERANCE FOR COST.  
 13. CONTRACTOR SHALL FURNISH NEW CASTINGS FOR ALL ADJUSTED BASINS & MANHOLES EXCEPT WHEN SALVAGED CASTINGS ARE AVAILABLE & THESE USE PERMITTED BY THE ENGINEER. A DEDUCTION OF \$15.00 FOR EACH TOP 30 USED SHALL BE MADE. THESE ADJUSTED CASTINGS MUST BE HANDED TO DRAW YARDS AT STATE FAIR & JOHN B. STS.  
 14. ALL CURBS WITHIN STREET INTERSECTIONS TO BE SEPARATE NOTED.  
 15. ALL CURBS IN DE INTERSECTIONS SHALL BE SEPARATE NOTED.

411338

DRAINAGE COMPLETED  
 PAVING COMPLETED 6-27-50