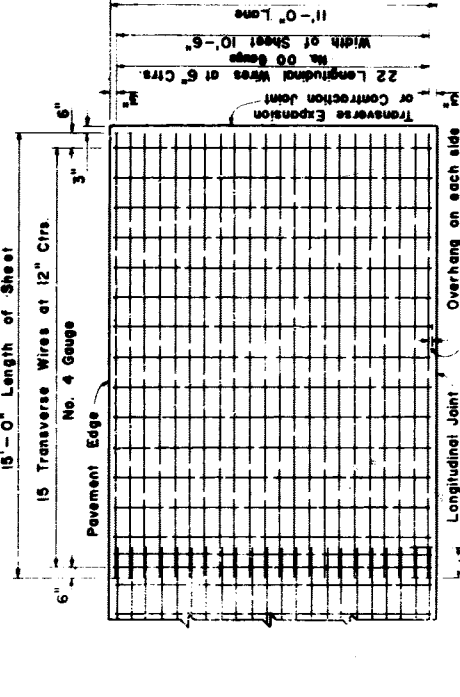
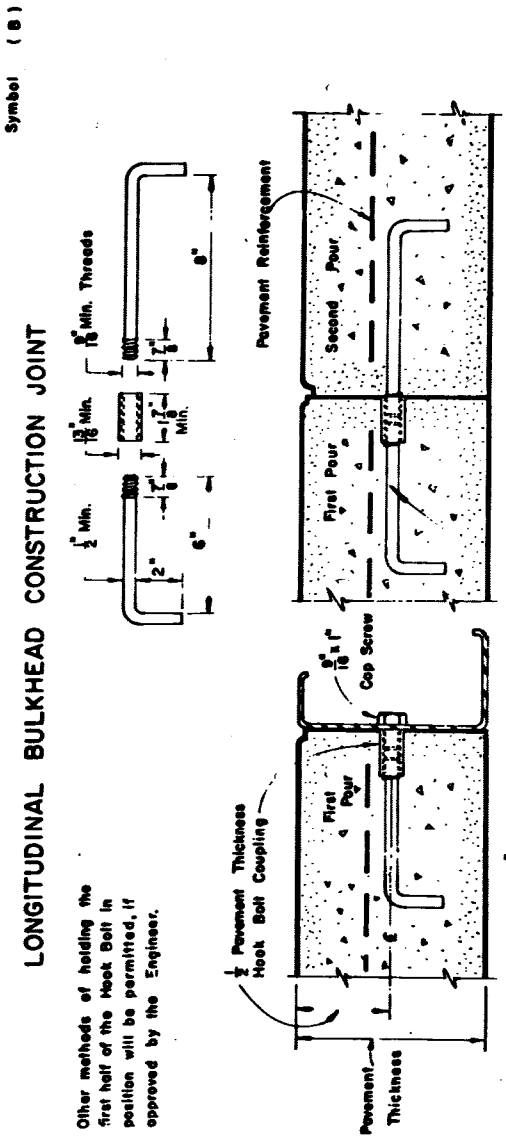


REINFORCEMENT FOR 11 FT. LANES



Approx. Lap 15" (not more than 1 1/2 in.)

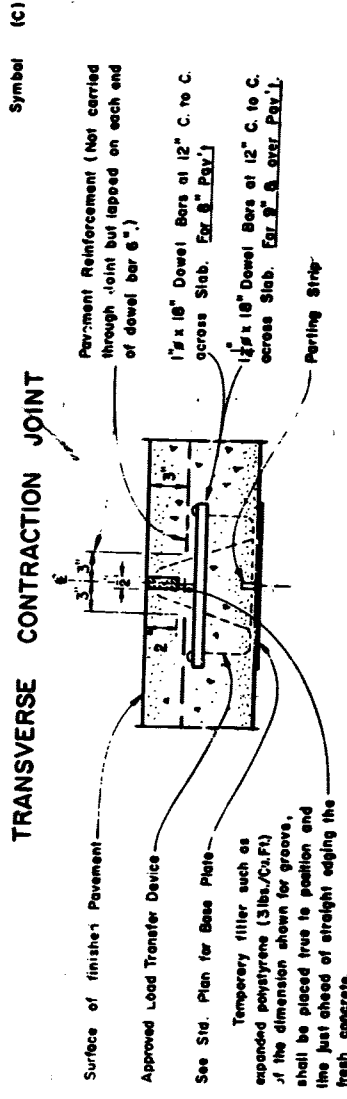
MESH REINFORCEMENT



Other methods of holding the first half of the Hook Bolt in position will be permitted, if approved by the Engineer.

Hook Bolts spaced at 24" C to C and placed at right angles to the pavement joint. Except that between pavement and curb, or curb & gutter, the Hook Bolt spacing shall be 40".

JOINT DOWEL HOOK BOLT



Perforated Reinforcement (Not carried through joint but lapped on each end of dowel bar 6").

1/2" x 18" Dowel Bars at 12" C to C across Slab. Ex. S. & Gr. P.V.L.

1/2" x 18" Dowel Bars at 12" C to C across Slab. Ex. S. & Gr. P.V.L.

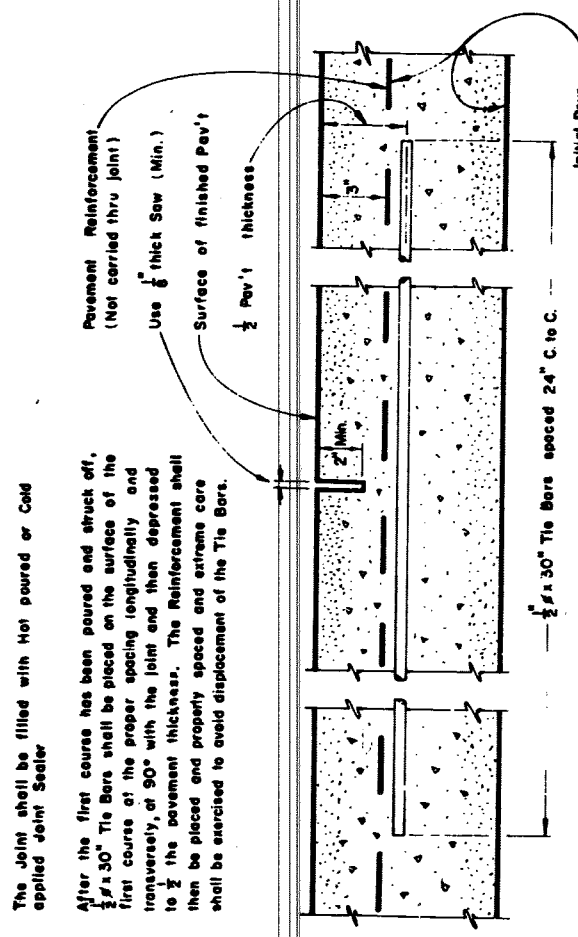
FOR BASE PLATE DETAILS SEE STD. DRAWING NO. C-4952

GENERAL NOTES

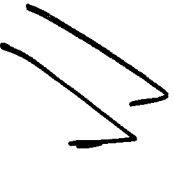
Where the joint width of pavement slab is other than shown, the reinforcement requirements shall be the same as shown on this standard plan. Special sheets of the required width may be used or standard sheets may be cut to the required size or spin sheets shall be not less than the spacing of longitudinal wires for wire mesh, or deformed wire, or of longitudinal bar for bar mat or the width of diamond for expanded metal mesh. Size of wires is based on U.S. Steel Wire Gauge and weight for Mesh and Deformed Wire Reinforcement is according to the Wire Reinforcement Institute Tables.

Type of Reinforcement	Average Weight per mesh (pounds)	Average Weight per Square Foot (pounds)	Weight per Standard Sheet (pounds)
MESH	75.4	76.5	6.8
11'-LANE			118.1
12'-LANE			128.9

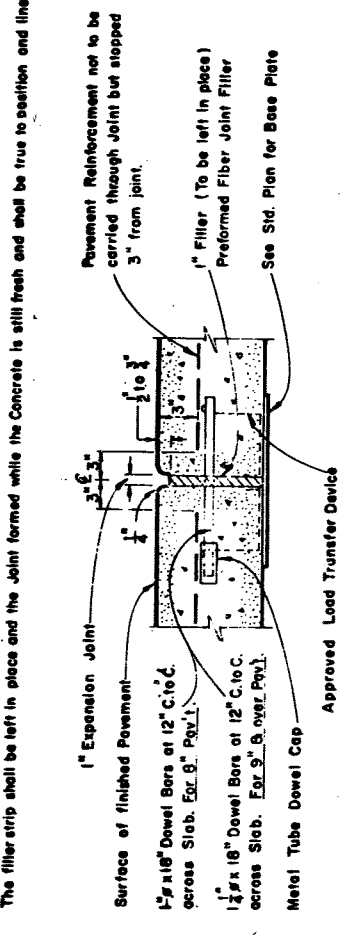
LONGITUDINAL LANE TIE JOINT



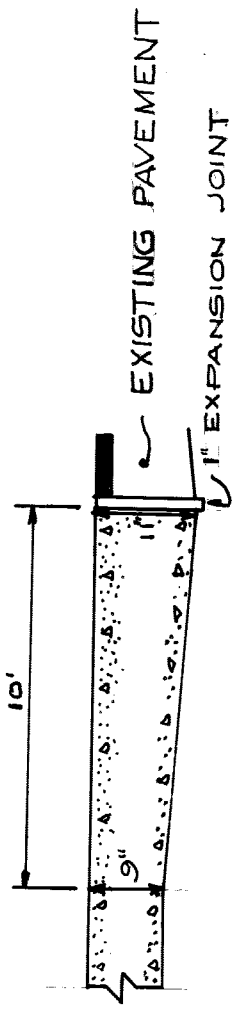
1/2" x 30" Tie Bars spaced 24" C to C.



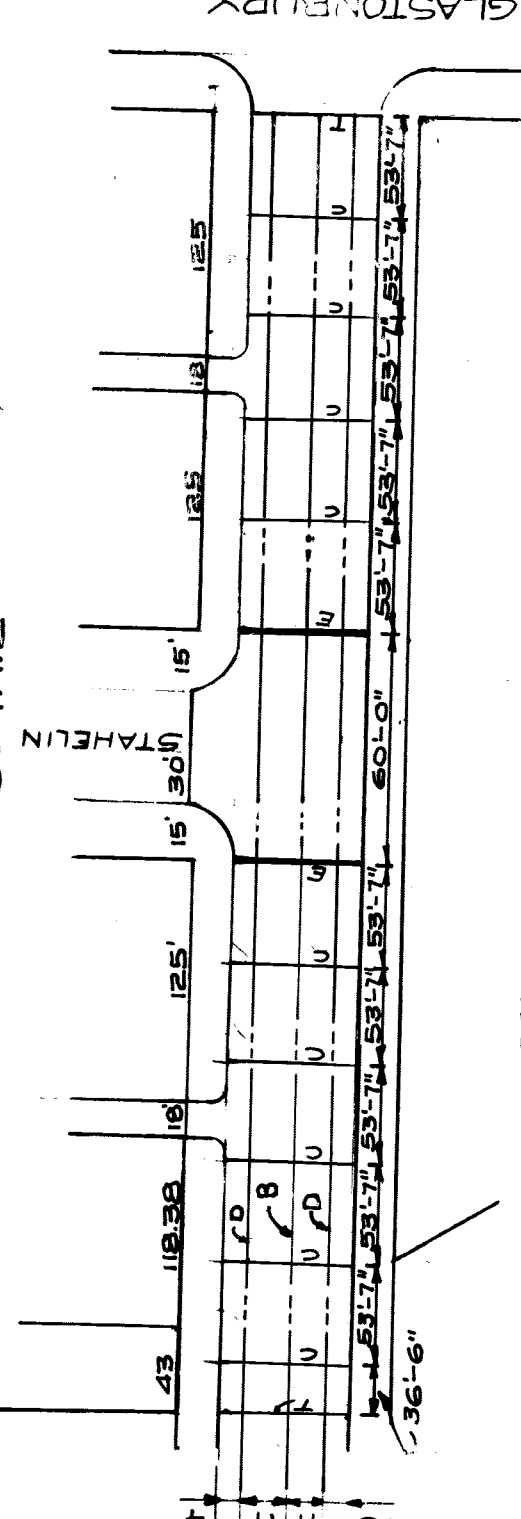
TRANSVERSE EXPANSION JOINT WITH LOAD TRANSFER



The filler strip shall be left in place and the joint formed while the concrete is still fresh and shall be true to position and line.



THICKENED EDGE DETAIL SYMBOL T

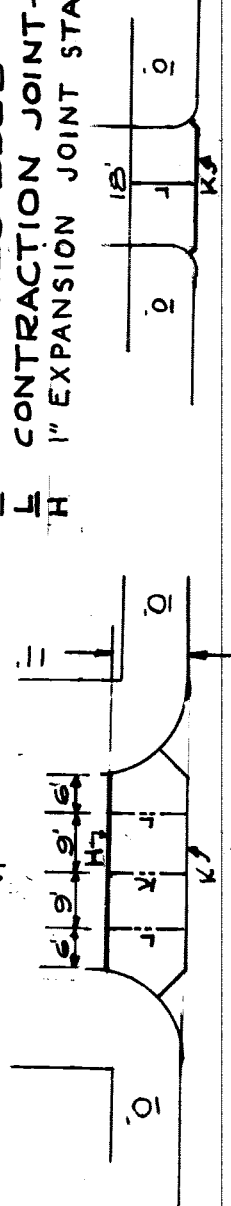


CONCRETE PAVEMENT MULTIPLE LANES REINFORCED

NOTES

- LONGITUDINAL BULKHEAD CONSTRUCTION JOINT
- TRANSVERSE CONTRACTION JOINT
- LONGITUDINAL LANE TIE JOINT
- TRANSVERSE EXPANSION JOINT WITH LOAD TRANSFER
- KEY JOINT - STANDARD DRAWING C-4380
- THICKENED EDGE
- CONTRACTION JOINT - STANDARD DRAWING C-4380
- EXPANSION JOINT - STANDARD DRAWING C-4380

STREET JOINTING AND ALLEY DETAIL



411300

PRIVATE PAVING

<p>CITY OF DETROIT DEPARTMENT OF PUBLIC WORKS CITY ENGINEERS OFFICE</p>	<p>PAVING OF WEAVER STAHELIN TO GLASTONBURY JOINTS LOCATION AND DETAILS PAVEMENT AND REINFORCEMENT</p>		<p>SHEET 2 OF 3 SHEETS</p>
	<p>DESIGNED BY <i>[Signature]</i></p>	<p>APPROVED <i>[Signature]</i></p>	<p>JOB NO. 325 DL-11</p>
	<p>PAVEMENT WIDTH CHANGED TO 20 FT.</p>	<p>DRW. CKD. APP. DATE</p>	<p>BOOK NO. PG. NO. SCALE DATE</p>
	<p>DESIGNED BY <i>[Signature]</i></p>	<p>APPROVED <i>[Signature]</i></p>	<p>DATE 5-19-66</p>