

| QUANTITIES            | ESTIMATED | CITY | FINAL | LOT | PLANNED | PLANNED | PLANNED |
|-----------------------|-----------|------|-------|-----|---------|---------|---------|
| EXCAVATION CU YD      | 2,459     | 318  | 2,453 | 318 | 318     | 318     | 318     |
| NEW CURB LIN FT       | 5,847     | 761  | 5,847 | 761 | 761     | 761     | 761     |
| PAVING 8" 5" 1" 5" R3 | 7         | 7    | 7     | 7   | 7       | 7       | 7       |
| MANHOLES CONSTRUCT    | 11        | 11   | 11    | 11  | 11      | 11      | 11      |
| BASES                 | 10        | 10   | 10    | 10  | 10      | 10      | 10      |
| SEWERAGE              | 652       | 652  | 652   | 652 | 652     | 652     | 652     |

|                       |               |
|-----------------------|---------------|
| PLAN SCALES DISTORTED | 1" = 100'     |
| LOTS & ALLEYS         | 1" = 50'      |
| 3'-0" FEET WIDTHS     | 1" = 50'      |
| DRAINAGE COMPLETED    | 5-14-40       |
| PAVING COMPLETED      | C.G. 11-16-48 |

|          |        |        |
|----------|--------|--------|
| SEWER    | C-958  | C-587  |
| MANHOLES |        |        |
| MANHOLES | 6-24-A | 6-24-B |
| MANHOLES | 6-25   | 6-26   |
| MANHOLES | 6-27   | 6-28   |
| MANHOLES | 6-29   | 6-30   |
| MANHOLES | 6-31   | 6-32   |

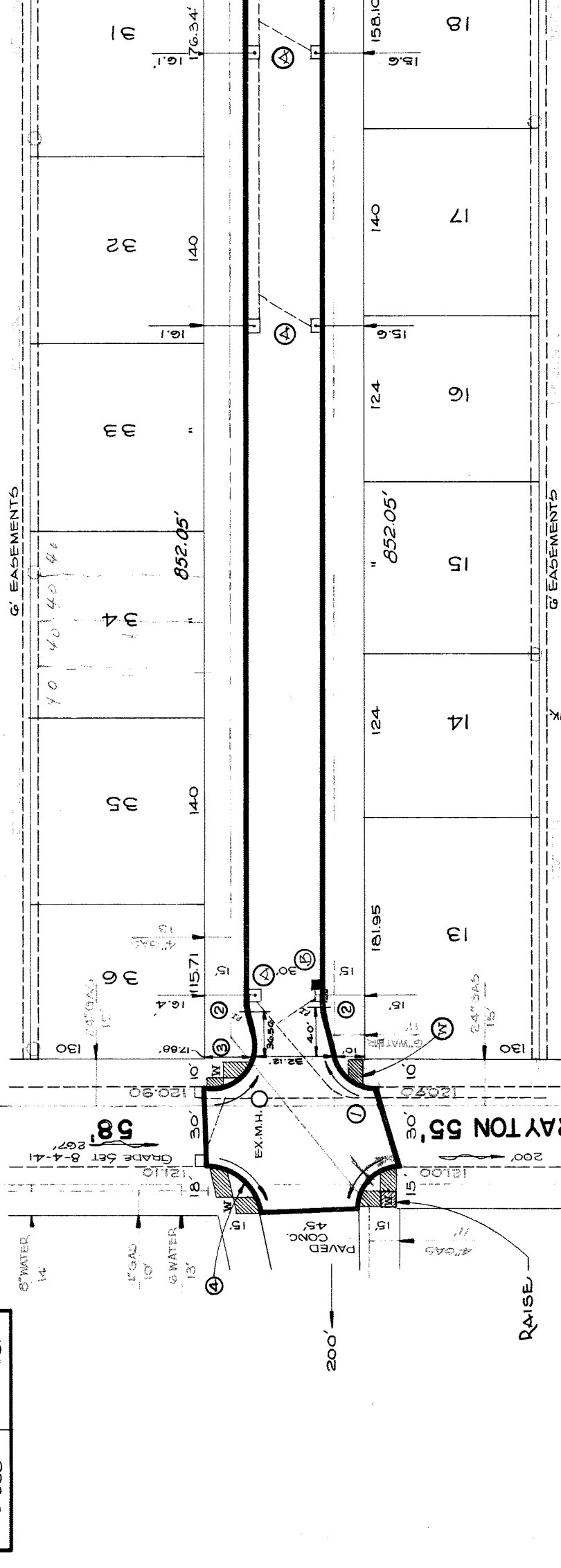
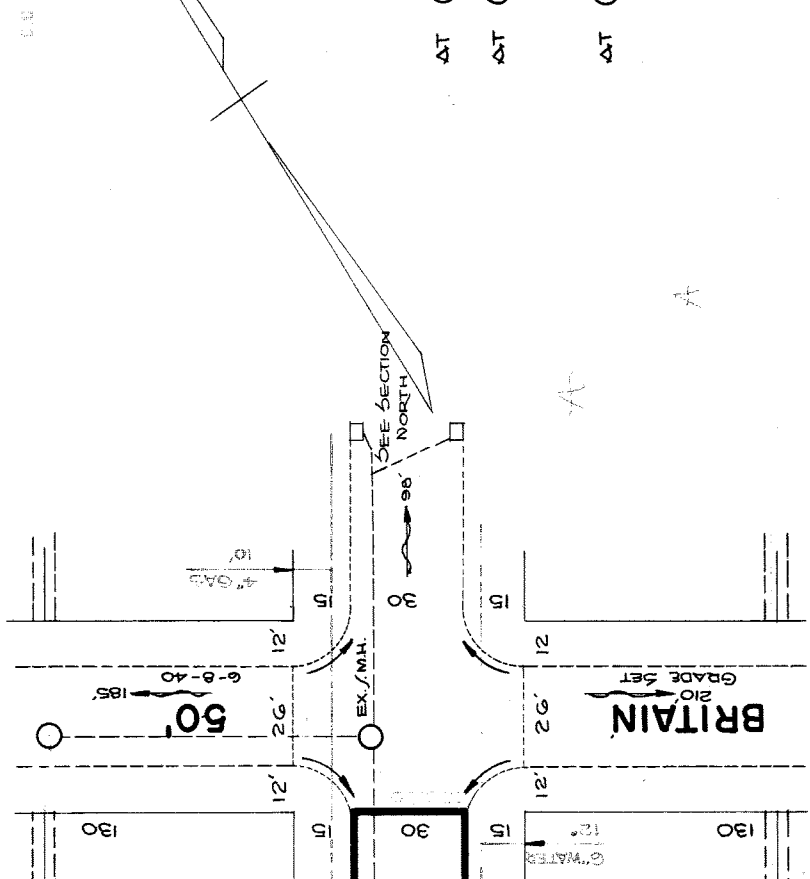
8"-6"-8" UNIFORM SLAB AT STREET INTERSECTIONS

T.F. SHARP

FORCED PAVED C.C.R. 8-26-47

BENCH MARKS

PL.B.M. # 97-254-A S.E. CORNER ROSSITER & GRAYTON 119.560'  
B.M. TOP OF HYDRANT OPP. HOUSE # 114.88 WAYBURN 124.05'  
B.M. SPIKE IN LIGHT POLE OPP. HOUSE # 116.74 WAYBURN 120.13'  
PL.B.M. # 97-257 N.E. CORNER OF ROSSITER & MORANG RD. (REC. 118.899) 118.85'



- NOTES
- ADJUST TOP OF 5 EXISTING 18"x12" Y BA/IN/ WITH FLAT TYPE GRATE & FRAME/
  - RECONSTRUCT 1 EXISTING 18"x12" BA/IN/ AT CURB LOCATION WITH 1" STD. 18"x12" FLAT TYPE BA/IN/. CONNECT TO EXISTING OUTLET/
  - ADJUST TOPS OF 3 WATER OR SEWER MANHOLES. CONSTRUCT 413 SQ. FT. OF STD. 4" SIDEWALK. DIRT ROADWAYS AT END OF PAVEMENT SHALL BE GRADED BACK & STONED G' DEEP UNIFORMLY, FOR A DISTANCE OF 10', TO MEET EX. GRADES. 42 CU YDS HAS BEEN INCLUDED UNDER EXCAVATION TOTALS FOR COST.
  - CONTRACTOR SHALL FURNISH ALL NECESSARY MATERIALS, INCLUDING CASTINGS & SHALL HAUL ALL SALVAGEABLE MATERIALS TO DRAY YARD AT STATE FAIR & JOHN R. STS.
  - ALL CURBS WITHIN STREET INTERSECTIONS TO BE SEPARATE TYPE II OR INTEGRAL TYPE III.

56.8' 100.1'

|           |             |            |           |             |            |             |
|-----------|-------------|------------|-----------|-------------|------------|-------------|
| ①         | Δ = 83° 25' | Δ = 6° 35' | ③         | Δ = 96° 35' | ④          | Δ = 78° 27' |
| R = 15'   | R = 50'     | R = 15'    | R = 15'   | R = 15'     | R = 15'    | R = 15'     |
| T = 13.97 | T = 2.87    | T = 2.87   | T = 16.83 | T = 12.24'  | T = 12.24' | T = 12.24'  |
| A = 21.84 | A = 5.74    | A = 25.28  | A = 20.54 | A = 20.54   | A = 20.54  | A = 20.54   |
| S = 36.75 | S = 62.85   | S = 62.85  | S = 62.85 | S = 62.85   | S = 62.85  | S = 62.85   |

