

REVISION	DATE	BY
C-938	6-29-47	T.F. SHARP
C-897	6-24-47	T.F. SHARP

NOTE:
 BEFORE STARTING CONSTRUCTION CONTRACTOR
 MUST CHECK WITH UTILITIES FOR LOCATION OF
 EXISTING STRUCTURES (WATER OR GAS MAINS)
 SHOWN ON PLANS

PLAN SCALE DISTORTED
 LOTS & ALLEYS 1"=100'
 STREET WIDTHS 1"=50'

DRAINAGE COMPLETED 5-14-40
 PAVING COMPLETED C.C. 11-16-48

ESTIMATED	ACTUAL
LOTTS	LOTTS
STREETS	STREETS
CONCRETE	CONCRETE
PAVING	PAVING
SEWER	SEWER
WATER	WATER
GRASS	GRASS
LAND	LAND
CONTRACT	CONTRACT
DATE	DATE
BY	BY

DATE	12-22-47
TIME	1-8-48
BY	P.M.
BY	W.R.
BY	S.F.D.
BY	L.J.K.
BY	L.J.K.
BY	L.J.K.

L.J.Kratz.
 S.F. DAVIS
 S.F.D.

S.A.S. - Robert R. Room
 Assistant

D. J. Bantz
Inspector

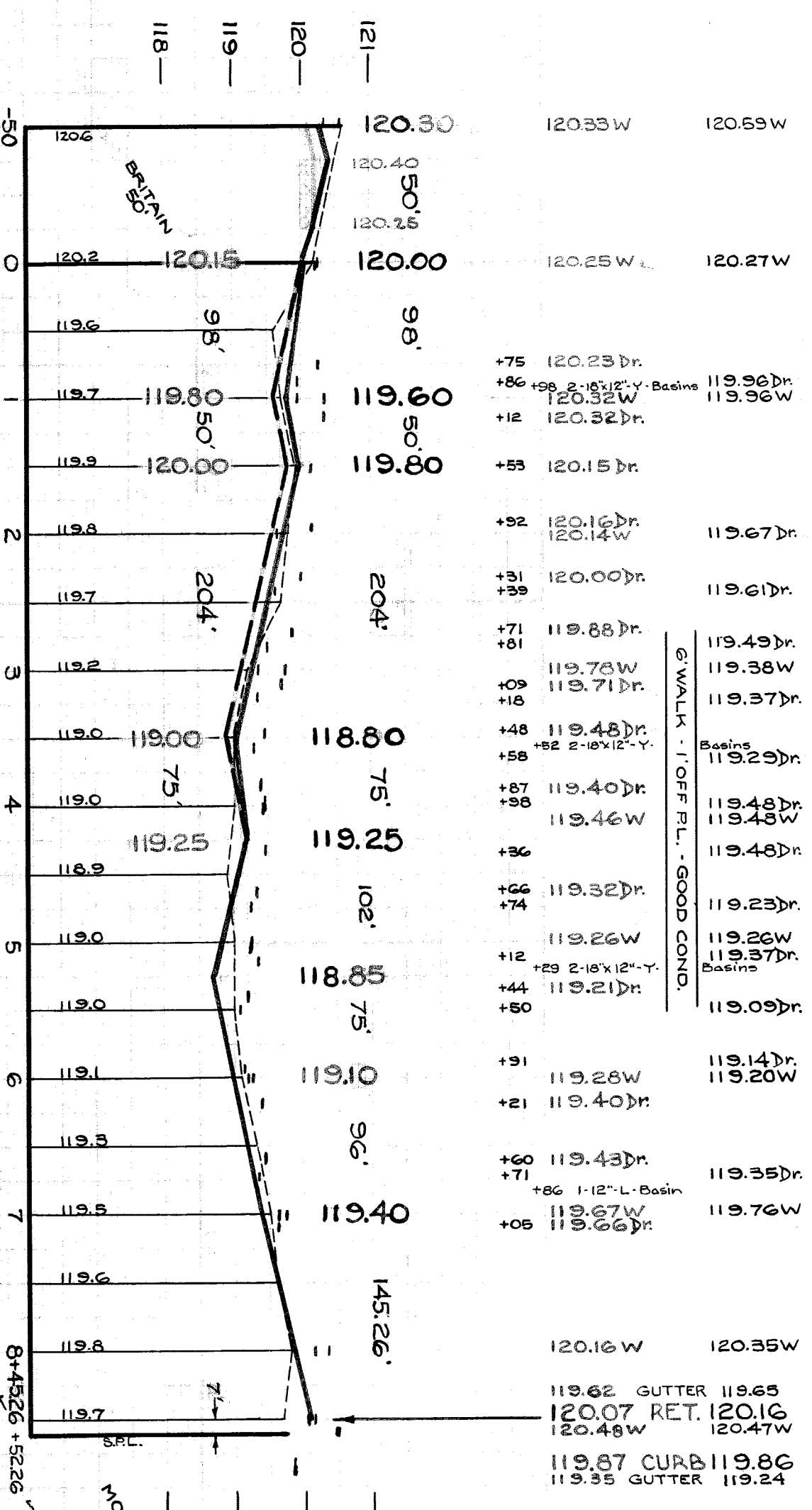
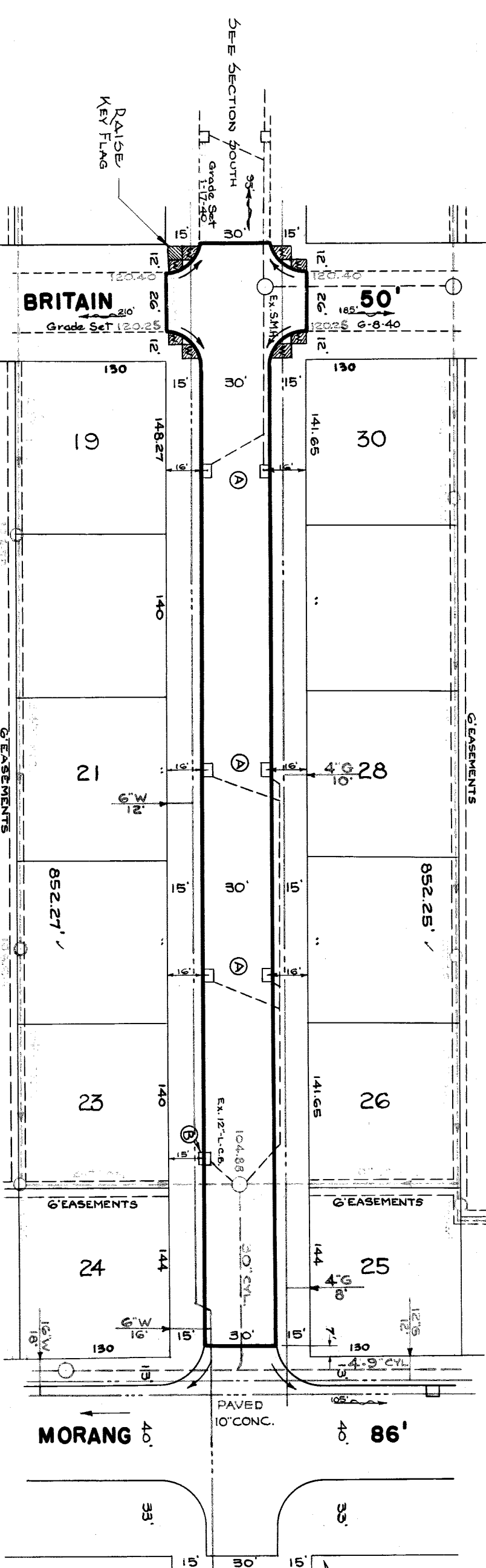
Walter R. Fisher
 Ass't.

DEPARTMENT OF PUBLIC WORKS DETROIT
 CITY ENGINEERS OFFICE - DIVISION OF PAVING DESIGN
 STREET PAVING PLAN

WAYBURN
 SPL OF BRITAIN
 7'S. OF SPL OF MORANG
 8'-6"-8"

302-9
 5696
 2 SHEETS
 30'

DATE 6-24-47



- NOTES**
- (A) ADJUST TOP OF STD. 18"x12" BASINS. CONTRACTOR TO FURNISH & INSTALL STD. FLAT TYPE CRITCH BASIN FRAMES & GRATES.
 - (B) REMOVE EXISTING 12"-L-TYPE CATCH BASIN & PLUG OUTLET OR FILL BASIN WITH CLASS "C" CONCRETE.
 - (C) ADJUST TOPS OF 4 EXISTING SEWER OR WATER MANHOLES.
 - (D) CONSTRUCT 948 SQ. FT. OF STD. 4" CONCRETE WALK DIRT ROADWAY AT END OF PAVEMENT. SHALL BE GRADED BACK & STONED & DEEP UNIFORMLY FOR A DISTANCE OF 10' TO MEET EXIST. GRADES. 36 CUB. YDS. HAS BEEN INCLUDED UNDER EXCAVATION TOTALS FOR COSTS.
 - (E) CONTRACTOR SHALL FURNISH ALL NECESSARY MATERIALS INCLUDING CASTINGS & SHALL HAUL ALL SALVAGEABLE MATERIALS TO D.P.W. YARD AT STATE FAIR & JOHN R. STS.
 - (F) ALL CURBS WITHIN STREET INTERSECTION TO BE SEPARATE TYPE II OR INTEGRAL TYPE III.

411303