

**DEPARTMENT OF PUBLIC WORKS DETROIT**  
**CITY ENGINEER'S OFFICE - DIVISION OF PAVING DESIGN**  
**STREET PAVING PLAN**

NAME OF STREET: **VOTROBECK DRIVE**  
 FROM: **40'S OF N.P.L. 7 MILE RD.**  
 TO: **N.P.L. VOTROBECK CT.**  
 TYPE OF PAVEMENT: **8-6.8 ONE C.C. INTEGRAL CURB** WIDTH: **30-40**  
 UNIFORM AT STREET INTERSECTIONS

CARD NO. **72**  
 INDEX TOPO NO. **115**  
 RECORD NO. **1**

DESIGNED BY	BEHM
DRAWN BY	BEHM
TRACED BY	
CHECKED BY	
APPROVED	<i>[Signature]</i>
ENGINEER OF STREETS	<i>[Signature]</i>
ASS'T CITY ENGINEER	<i>[Signature]</i>

PLAN MADE FROM SURVEY	DATE	COMPUTED	P.M.
9/20/48			
PLAN	PROFILE	D.B.	CHECKED
8-6.8	8-6.8	8-6.8	8-6.8
CITY	LENGTH	CITY	LENGTH
2	109.99	2	109.99
TOTAL	2	TOTAL	2
109.99		109.99	

QUANTITIES	ESTIMATED		FINAL	
	LOTS	CITY	LOTS	CITY
EXCAVATION	1/26	93		
NEW CURB	79	79		
PAVING	3,293	207		
SEWER				
MANHOLES				
18" x 12"				
SEWERS				
PAVING				

**NOTE:**  
 BEFORE STARTING CONSTRUCTION CONTRACTOR MUST CHECK WITH UTILITIES FOR LOCATIONS OF EXISTING STRUCTURES WHETHER OR NOT INDICATED ON PLANS.

PLAN SCALE DISTORTED  
 LOTS & ALLEYS 1-100  
 STREET WIDTHS 1-50  
 DRAINAGE COMPLETED  
 PAVED FROM 7-MILE RD. TO 828 W. PRIVATE  
 PAVING COMPLETED NOV. 4 DEC. 1948  
 C.C. 5-31-49

SEWER REVISIONS	ESTIMATE MADE. EXTENDED SEWER LINE. CARRIED IN SIDE AT VOTROBECK CT. INTERSECTION. 9/29/48 BEHM
SUPPLEMENTARY DETAILS	
DRAWING NO.	C-327 C-327A C-733
C-325	C-326A C-524 C-390
C-595	C-586 C-739 C-739A
C-739B	C-938 C-597

PET. NO 808 WILLARD LORENZ. EVERGREEN LAND CO. 9/30/48

**BENCH MARKS:**  
 P.L.B.M. N.E. COR. BRIMLE & 7 MILE RD. # 115-2559 159.089  
 P.L.B.M. N.E. COR. 7 MILE & EVERGREEN # 115-2556 160.057

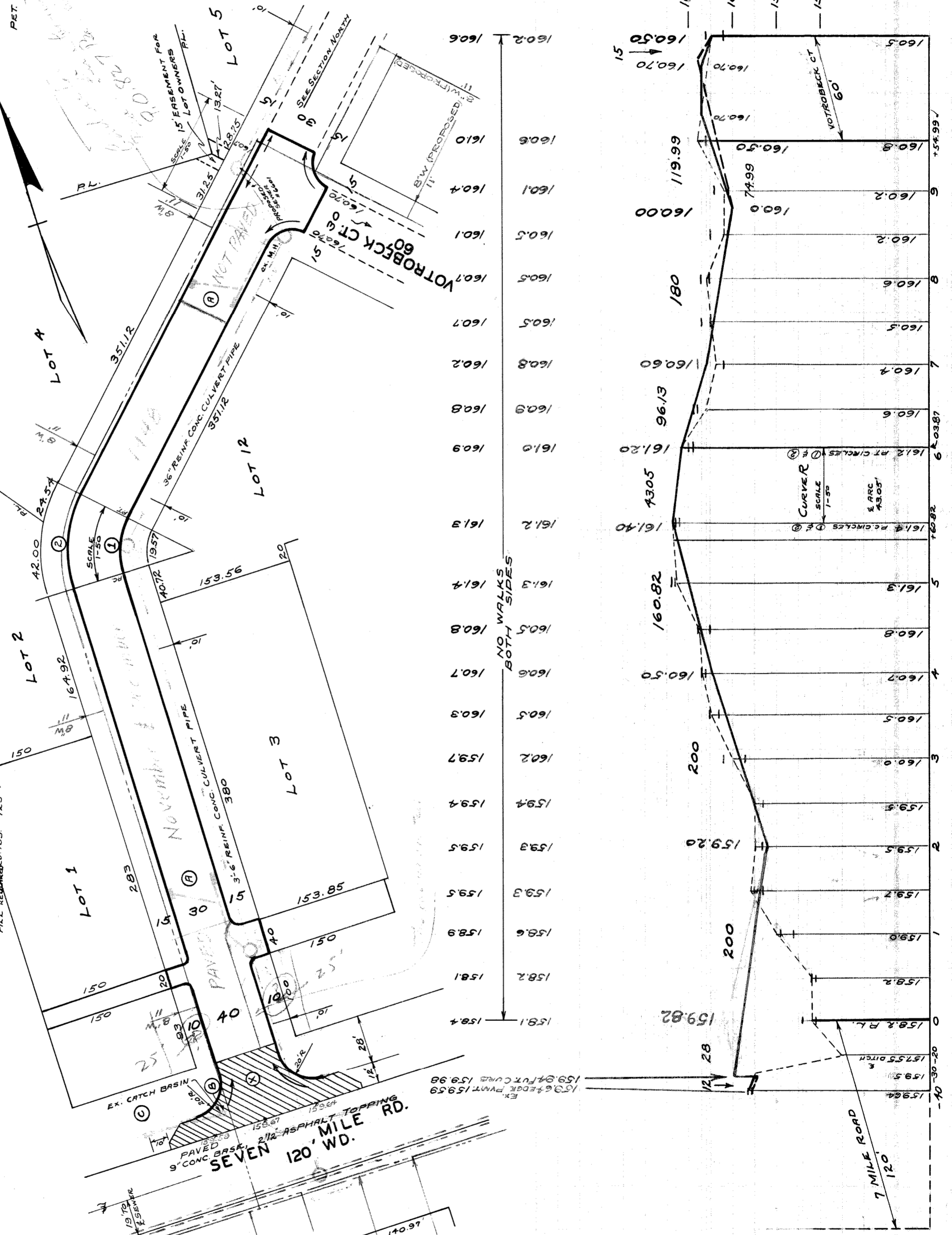
**NOTES:**  
 AT (A) CONSTRUCT 4 STD. 18" x 12" FLAT TYPE BASINS & CONNECT TO EXISTING OUTLETS AS SHOWN.  
 AT (B) CONSTRUCT 40 FT. RETURN WITH TYPE II CURBS. 20 FT. RAD. & 1/2 FT. WIDENING STRIP. SLAB TO BE 9" CONCRETE.  
 ADJUST TOPS OF 5 WATER OR SEWER MANHOLES BACKFILL SEWER PIPE TRENCHES UNDER PROPOSED PAVEMENT WITH APPROVED SAND-GRAVEL MATERIAL; OTHERWISE FILL & TAMP WITH APPROVED EARTH LAYERS AS REQUIRED.

**CONTRACTOR SHALL FURNISH ALL NECESSARY MATERIALS, INCLUDING CASTINGS & SMALL MAUL ALL SALVAGE-ABLE MATERIALS TO D.P.W. YARD AT STATE FAIR & UJOW E. STS.**

**\* ALL CURBS WITHIN STREET INTERSECTION TO BE SEPARATE TYPE II OR INTEGRAL TYPE III.**

**AT (B) ABANDON EXISTING CATCH BASIN, PLUG OUTLETS WITH CLASS 'C' CONCRETE & REMOVE OR FILL WITH CLASS 'C' CONCRETE.**

**AT (C) CONSTRUCT 1 MODIFIED 18" x 12" DOME TYPE BASIN & CONNECT TO EXISTING OUTLET AS SHOWN.**



**CURVE DATA**

① R = 40'  
 Δ = 44° 50' 57"  
 T = 16.57'  
 A = 31.31'

② R = 70'  
 Δ = 44° 50' 57"  
 T = 28.89'  
 A = 34.79'

410937

B.P. 6/13/49