

13.P.61049

SEWER	BEWM
REVISIONS QUANTITIES PUT ON 3/23/49	
SUPPLEMENTARY DETAILS	
DRAWING NO.	C-327 C-3249
C-233	C-725 C-3269 C-524
C-296	C-525 C-526 C-739
C-739A	C-739B C-938 C-527

NOTE:
BEFORE STARTING CONSTRUCTION CONTRACTOR MUST CHECK WITH UTILITIES FOR LOCATIONS OF EXISTING STRUCTURES WHETHER OR NOT INDICATED ON PLANS.

PLAN SCALE DISTORTED

LOTS & ALLEYS 1-100

STREET WIDTHS 1-50

DRAINAGE COMPLETED

PAVING COMPLETED C.C. 5-31-49

QUANTITIES		ESTIMATED		FINAL	
		LOTS	CITY	LOTS	CITY
EXCAVATION	CU. YDS.	1043	164		
NEW CURB	LIN. FT.	63	63		
PAVING	SQ. YDS.	3468	55		
SIDEWALK	SQ. FT.		100		
MANHOLES	ADJUST		55		
BASINS	ADJUST		7		
SEWER 12"	LIN. FT.		247		
SEWER 18"	LIN. FT.		199		
SEWER 24"	LIN. FT.		109		

HOR. SCALE	1" = 100'	BOOK		PAGE	
VER. SCALE	1" = 2'	DATE	8-15-48		
PLAN	FORM	PROFILE	FORM	COMPUTED	
CHECKED	LGMV	GRADE	CHECKED	F.F.	
LOT 21	1877.84	LENGTH	938.92		
LOT 22	134.00	LENGTH	67.00		
TOTAL 21	2011.84	LENGTH	1005.92		
CITY		LOT			

DESIGNED BY

DRAWN BY BEWM

TRACED BY BEWM

CHECKED BY

APPROVED

ENGINEER OF STREETS

ASST. CITY ENGINEER

CONTRACT NO. P.W. 899

DEPARTMENT OF PUBLIC WORKS DETROIT

CITY ENGINEERS OFFICE - DIVISION OF PAVING DESIGN

STREET PAVING PLAN

VOTROBECK CT.

E.P.L. VOTROBECK DRIVE

32' E. OF W.P.L. OF EVERGREEN AVE.

INDEX TO NO. 72

NO. 115

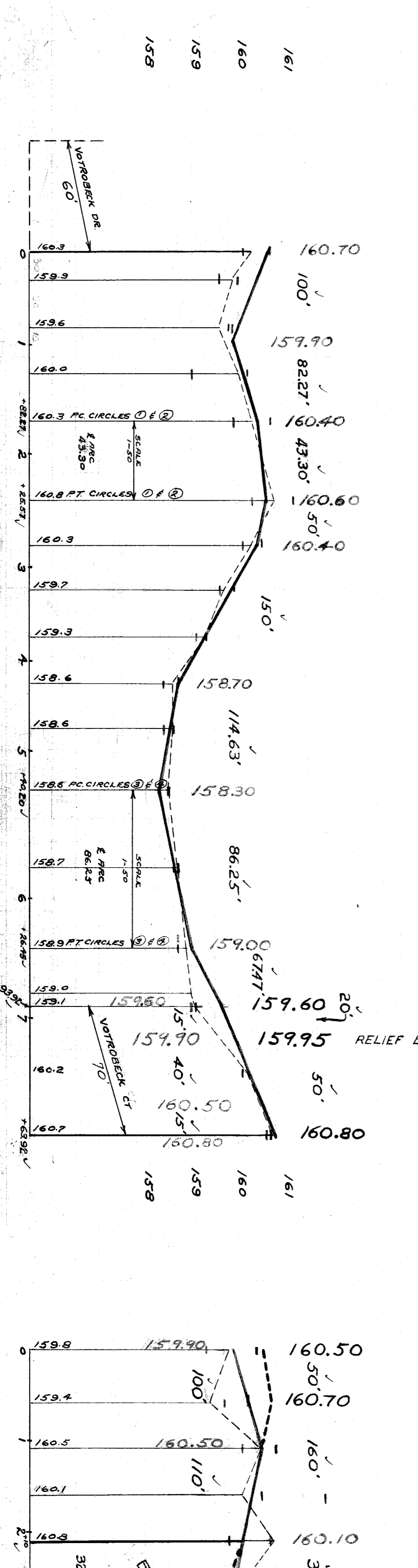
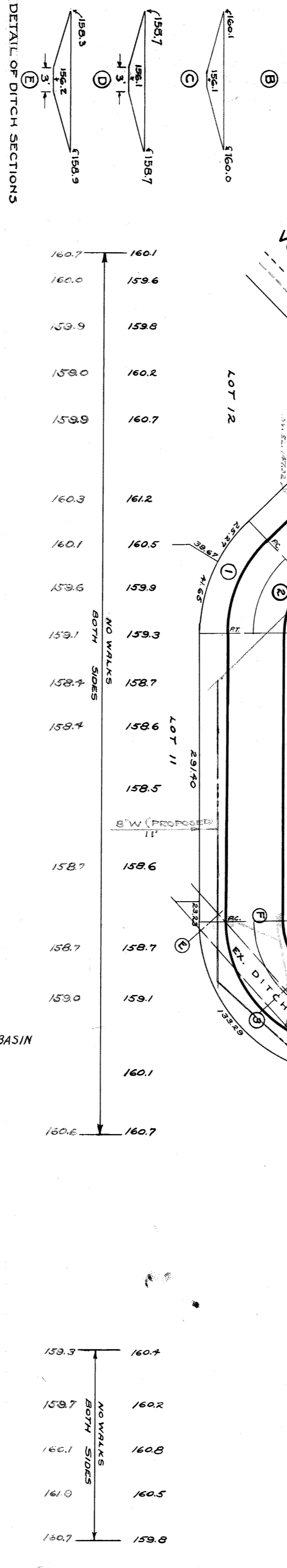
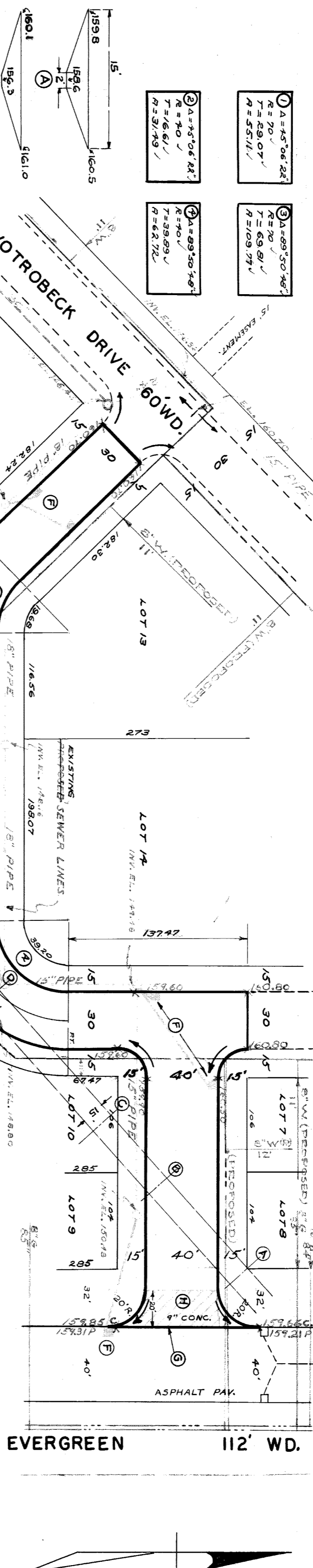
NUMBER OF SHEETS 2

SHEET NO. 2

RECORD NO. 2

TYPE OF PAVEMENT 8" CONC. ONE COURSE CONC. INTEGRAL CURB WIDTH 30' & 40'

REQUESTED BY SAMUEL HECHTMAN; EVERGREEN LAND CO. PER. # 2315 7-20-48



NOTES:

1. All curbs within street intersections to be separate type II or integral type III.

2. At (A) Construct 7' std. 18"x12" Y-flat type basins complete + connect to existing outlets as shown.

3. At (B) Contractor shall remove concrete header and broken asphalt back of junction as required and fill with cold patch to meet new grades.

4. At (C) Curbs included under excavation totals for costs.

5. At (D) Construct 40 ft. return with type II Curbs, 20' Rad. Slab to be 6" thick.

6. At (E) Construct 5' sewer manholes.

7. Backfill sewer pipe trenches under proposed pavement with approved sand gravel material, otherwise fill + tamp with approved earth layers as required.

8. Contractor shall furnish all necessary equipment including castings + shall haul all salvageable material to D.P.W. yard at State Fair + John R. Streets.

CONSTRUCTION OF WATER MAINS AS SHOWN IS PROPOSED AT ONCE. THE PAVING CONTRACTOR SHALL OMIT TEMPORARILY SUCH PORTIONS OF THE PAVEMENT AS WILL BE NECESSARY FOR CROSS-OVERS AND COOPERATE AS REQUIRED.

4709339