

NAME OF STREET: **VAUGHAN**
 FROM: **S.P.L. OF TIREMAN**
 TO: **S.P.L. OF CONSTANCE**
 TYPE OF PAVEMENT: **B & B ONE COURSE CONCRETE - INTEGRAL CURB WIDTH**
 BENCH MARKS: **30 FT.**

DESIGNED BY: **G.S. HENDERSON**
 DRAWN BY: **A. Pendergast**
 TRACED BY: **G.S.**
 CHECKED BY: **G.S.**
 APPROVED BY: **Manuel A. Tucker**
 ENGINEER OF STREETS
 ASST. CITY ENGINEER

SEWER *OK* *April 12/1/50*
 GROUND AND WALK ELEVATIONS REVISIONS TO GRADE FROM STA. 4+00 TO STA. 6+09.92
 7-13-50 P.M.

DRAWING NO.	C-324A	C-325
C-326A	C-327	C-324
C-585	C-586	C-587
C-739	C-739A	C-739B
	C-938	C-939

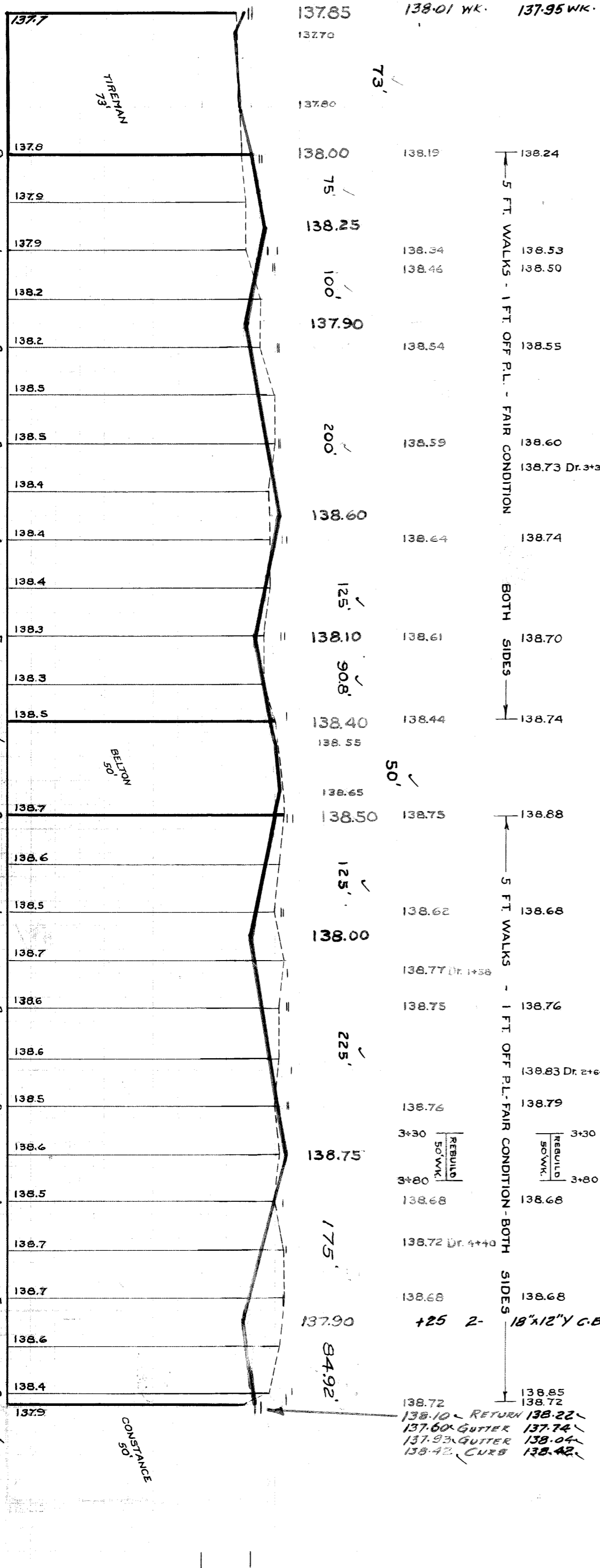
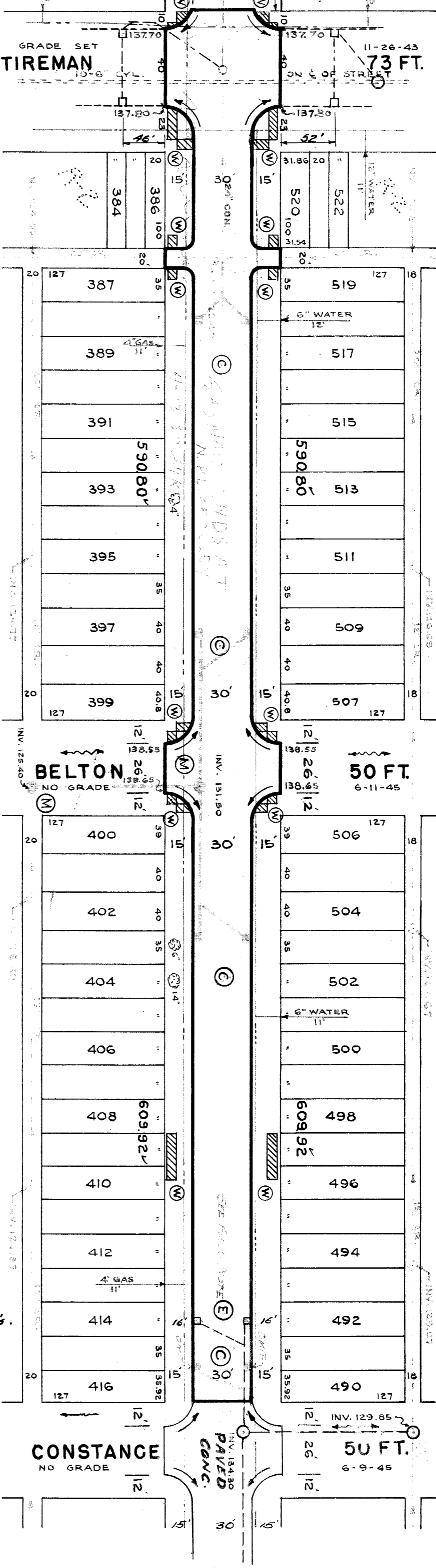
NOTE: BEFORE STARTING CONSTRUCTION CONTRACTOR MUST CHECK WITH UTILITIES FOR LOCATIONS OF EXISTING STRUCTURES WHETHER OR NOT INDICATED ON PLANS.

PLAN SCALE DISTORTED
 LOTS & ALLEYS 1"=100'
 STREET WIDTHS 1"=50'

DRAINAGE COMPLETED
 PAVING COMPLETED C.C. 8-1-50

QUANTITIES	ESTIMATED	FINAL
EXCAVATION CU YDS.	1665	445
NEW CURB LIN FT.	4067	138
PAVING 6" 90 YDS.	600	207
SIDEWALK 4" 90 FT.	924	52
MANHOLES NEW	1	2
CONCRETE	685	683
SEWER 12" LIN FT.	600	678
SEWER 18" LIN FT.	100	83
CONCRETE SOFT	100	83

NON SCALE 1"=100'	1753	4
VER. SCALE 1"=2' <td>BOOK 1583</td> <td>PAGE 5</td>	BOOK 1583	PAGE 5
DATE 6-11-45		
PLAN CHECKED A.F.	COMPLETED	DA
PROFILE CHECKED V.T.	GRADE	95
LOT LENGTH	1180.72	
CITY LENGTH	193.00	
TOTAL AREA	2647.44	1323.72
COST ADVERTISING		
COST INSPECTION		



- NOTES
- AT (E) ABANDON EXISTING PIPE BASINS PLUG OUTLETS WITH CLASS C CONCRETE.
 - AT (C) CONSTRUCT & STD. PIPE CATCH BASINS WITH STD. FRAMES AND GRATES AS REQUIRED. CONNECT TO EXISTING OUTLETS AS SHOWN. SEE STD. DWGS C-326A & C-524.
 - AT (M) CONSTRUCT 2 STD. MANHOLES COMPLETE.
 - ADJUST TOPS OF 2 EXISTING SEWER MANHOLES.
 - RECONSTRUCT CONE OF 1 EXISTING SEWER MANHOLE, IF NECESSARY.
 - ADJUST TOPS OF 2 WATER MANHOLES.
 - AT (W) CONSTRUCT 152.4 SQ. FT. OF STD. 4" SIDEWALK.
 - BACKFILL SEWER PIPE TRENCHES UNDER PROPOSED PAVEMENT WITH APPROVED SAND-GRAVEL MATERIAL; ELSEWHERE FILL & TAMP WITH APPROVED EARTH LAYERS AS REQD.
 - DIRT ROADWAYS AND ALLEYS AT ENDS OF PAVEMENTS SHALL BE GRADED BACK AND STONED 6" DEEP UNIFORMLY FOR A DISTANCE OF 10 FT. TO MEET EXISTING GRADES. 137 CY INCLUDED UNDER EXCAVATION TOTALS FOR COST.
 - CONTRACTOR SHALL FURNISH NEW CASTINGS FOR ALL ADJUSTED BASINS & MANHOLES, EXCEPT WHEN SALVAGED CASTINGS ARE AVAILABLE & THEIR USE IS PERMITTED BY THE ENGINEER. A DEDUCTION OF \$5.00 FOR EACH TOP SO USED SHALL BE MADE FROM THE ORIGINAL CONTRACT PRICE. OTHERWISE THE SALVAGED CASTINGS MUST BE HAULED TO THE DRIV. YARDS AT STATE FAIR & JOHN R. STS.
 - ALL CURBS WITHIN STREET INTERSECTIONS TO BE SEPARATE TYPE II OR INTEGRAL TYPE III.
 - RAISE WALKS BETWEEN STA 3+30 AND 3+80 TO CONFORM TO CURB GRADES.

* FIELD NOTE - 7-12-50
 Ream at Belton & Tireman
 440 Perry - 11-11-50
 410912