

26 BP  
6-22-49

REVISIONS	OLD MAP 2-1-38
C-324	C-387
C-325	C-387
C-326	C-387
C-327	C-387

REPORT MADE FOR CONSTRUCTION CONTRACTOR  
 MUST CHECK WITH UTILITIES FOR LOCATION OF  
 UTILITIES AND WHETHER WHETHER OR NOT THEY  
 ARE ON PLANS

PLAN SCALE DISTORTED  
 LOT 18 ALLEYS 1" = 100'  
 STREET WIDTHS 1" = 50'

SPANNING COMPLETED 9-8-44  
 PAVING COMPLETED C.C. 11-8-49

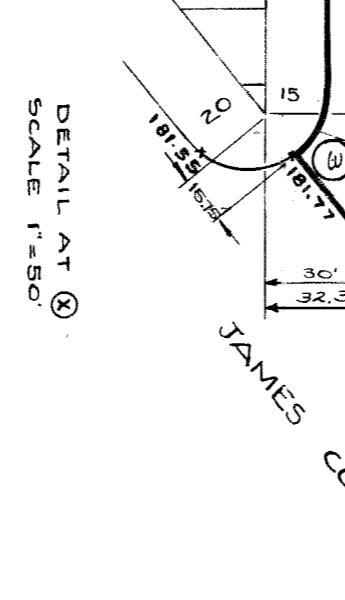
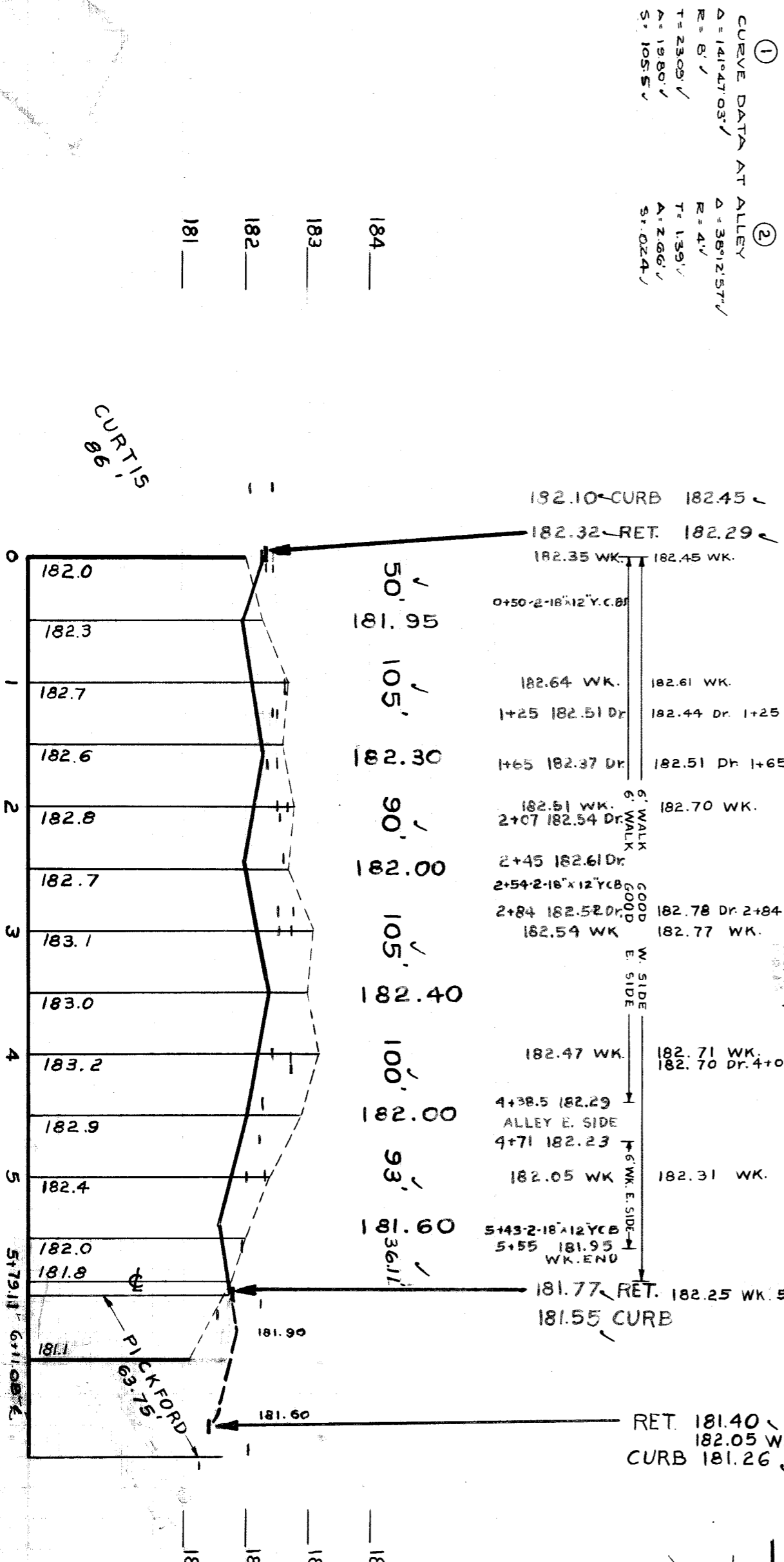
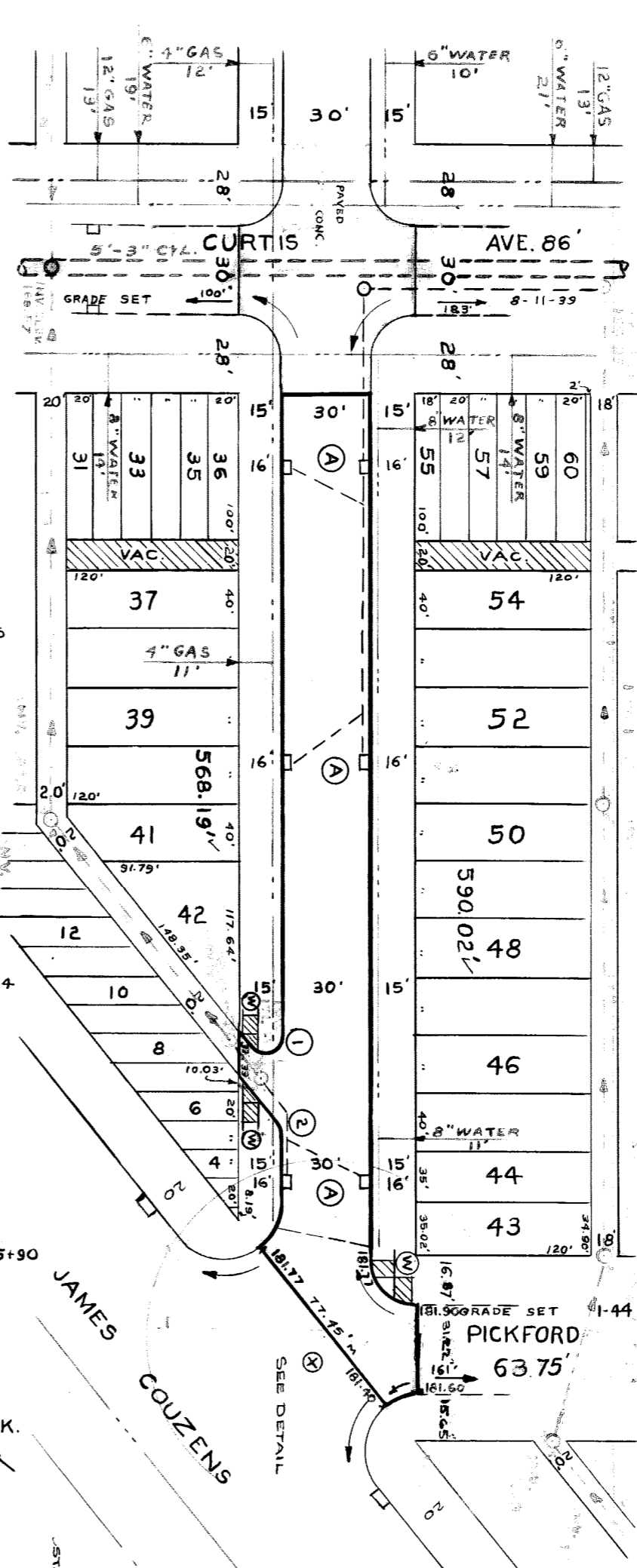
QUANTITIES	ESTIMATED	FINAL
RECAVATION CL. YES	1 074	162
NEW CURBS LIN. FT.	1 939	1 074
6" CONC. OR SOLID	177	120
8" CONC. OR SOLID	177	177
CONCRETE	215	205
ADJUST	75	0
CONTRACT	0	0

PLAN SCALE 1" = 100'	1394
SECTION SCALE 1" = 2'	1204
DATE 11-10-48	76
DATE 11-23-48	69
NO. 1071	5.5
AR. 1 125 88	562 94
J.P. 1 222 15	48 14
562 94	411 68

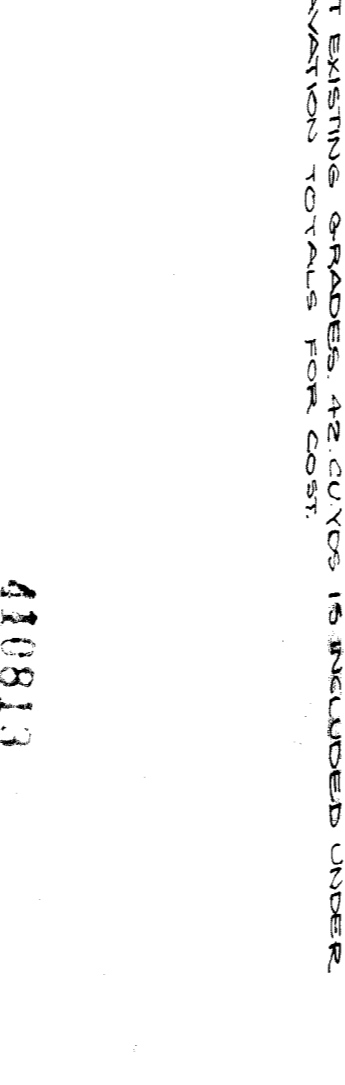
DESIGNED BY: K.D. Meyer  
 CHECKED BY: Supt. - Rick Room  
 DRAWN BY: J.A. Martin  
 ASSIST. ENGINEER: Martin, R. Tolker

DEPARTMENT OF PUBLIC WORKS DETROIT  
 CITY ENGINEERS OFFICE - DIVISION OF PAVING DESIGN  
 STREET PAVING PLAN  
 TRACEY  
 NPL OF CURTIS  
 WPL OF JAMES COUZENS

325 H-5  
 1877  
 30'



DETAIL AT X  
 SCALE 1" = 50'



DETAIL AT Y  
 SCALE 1" = 10'

NOTES:  
 AT (A) ADJUST TOPS OF 6 EXISTING 18"x12" V BASINS USING FLAT TYPE GRATINGS & FRAMES.  
 AT (W) CONSTRUCT 215' 50. FT. OF STANDARD 4" SIDEWALK.  
 ADJUST TOPS OF 2 WATER MANHOLES.  
 ADJUST TOP OF 1 EXISTING SEWER MANHOLE IF NECESSARY  
 RECONSTRUCT CONE OF EXISTING SEWER MANHOLE  
 CONTRACTOR SHALL FURNISH ALL NECESSARY MATERIALS TO D.P.W. YARD  
 CASTINGS SHALL HAVE ALL STATE  
 AT STATE FAIR & JOHN AR STS.  
 ALL CURBS WITHIN STREET INTERSECTIONS TO BE SEPARATE TYPE III  
 OR INTERLACED TYPE III.  
 DIRT ROADWAYS & ALLEYS AT ENDS OF PAVEMENT SHALL BE GRADED  
 BACK & STONED & DEEF UNIFORMITY, FOR A DISTANCE OF 10 FT TO  
 MEET EXISTING GRADES. 42 CUYDERS IS INCLUDED UNDER  
 EXCAVATION TOTALS FOR COST.

BENCH MARKS  
 PLBM # 86-255 ON N.W. COR. OF CURTIS & SCHAEFER 182.126  
 B.M. ARR. ON HYD. N.W. COR. OF CURTIS & TRACEY 185.55  
 B.M. ARR. ON HYD. S.W. COR. OF TRACEY & PICKFORD 185.32  
 PLBM # 86-255-A ON NE. COR. OF SNOWDEN & CURTIS 181.664

NOTE: P.L. OFFSET 5 FT. TO + IN WALK

CURVE DATA AT ALLEY  
 Δ = 141° 47' 03" V  
 R = 87' V  
 T = 23.09' V  
 A = 19.80' V  
 S = 105.5' V

CURVE DATA AT ALLEY  
 Δ = 35° 12' 57" V  
 R = 41' V  
 T = 1.59' V  
 A = 2.66' V  
 S = 0.24' V

CIRCLE (3)  
 Δ = 52° 54' 41"  
 R = 13.95'  
 T = 6.90'  
 A = 12.79'  
 S = 7.06'

CIRCLE (4)  
 Δ = 17° 5' 32"  
 R = 27.59'  
 T = 4.14'  
 A = 8.25'  
 S = 522.60 FT.

CIRCLE (5)  
 Δ = 20° 0' 18"  
 R = 27.59'  
 T = 4.87'  
 A = 9.63'  
 S = 1.380 SOLID

182.10 CURB 182.45  
 182.32 RET. 182.29  
 182.35 WK. 182.45 WK.  
 0+50 2-16"x12" Y.C.B.  
 182.64 WK. 182.61 WK.  
 1+25 182.51 Dr. 1+25  
 1+65 182.37 Dr. 182.51 Dr. 1+65  
 182.51 WK. 182.70 WK.  
 2+07 182.54 Dr. 6" WALK  
 2+45 182.61 Dr. GOOD  
 2+54 2-16"x12" Y.C.B.  
 2+84 182.52 Dr. 182.78 Dr. 2+84  
 182.54 WK. 182.77 WK.  
 182.47 WK. 182.71 WK.  
 182.70 Dr. 4+04  
 4+38.5 182.29 ALLEY E. SIDE  
 4+71 182.23  
 182.05 WK. 182.31 WK.  
 5+43 2-16"x12" Y.C.B.  
 5+55 181.95 WK. END  
 181.77 RET. 182.25 WK. 5+90  
 181.55 CURB  
 RET 181.40  
 182.05 WK.  
 CURB 181.26

410813