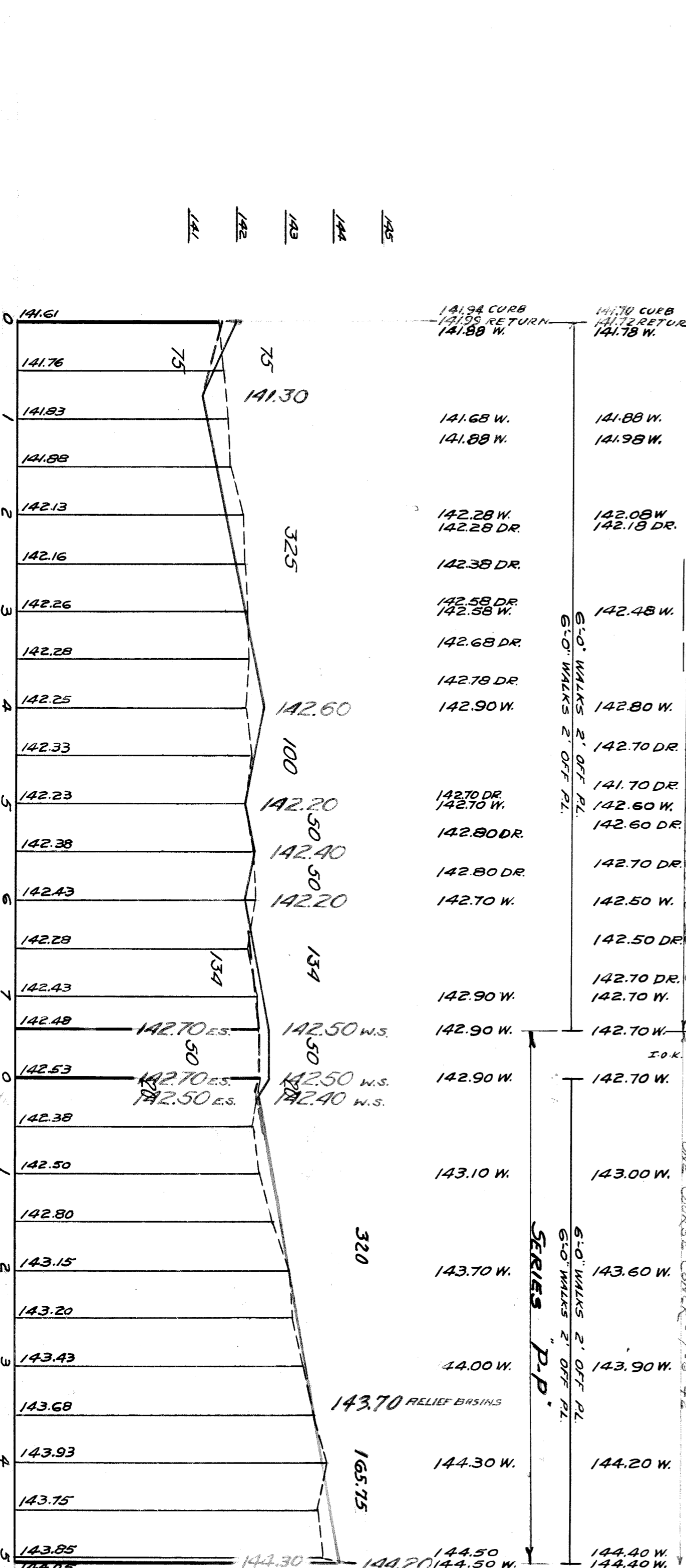
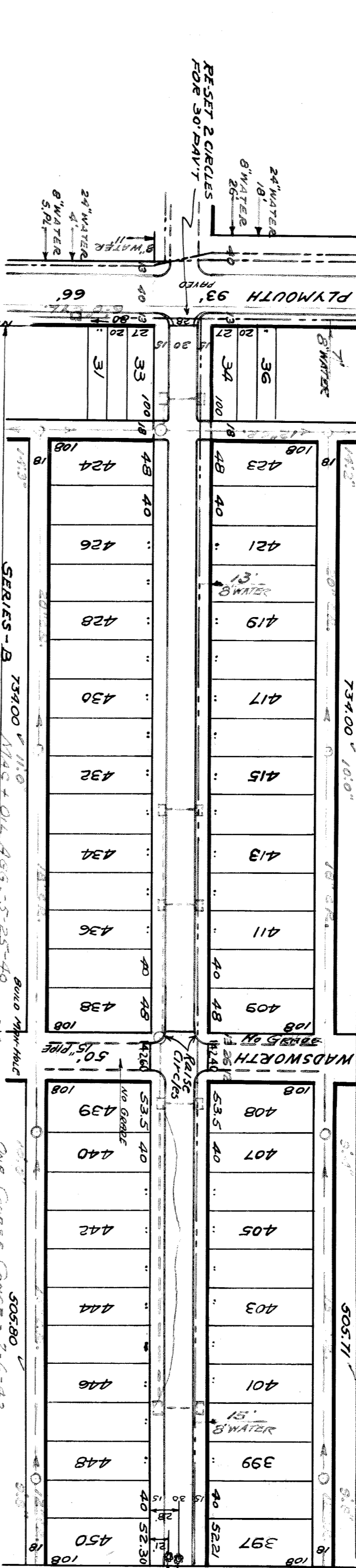


12 Part  
9/5/4  
388-1100

O.K.

SEWER INDEXED	OK
JOB NO. E-2045	DATE
BLUE PRINT ISSUED FOR:	START
GRADE ONLY	FINISH
CATCH BASINS	
REVISIONS:	
PAVING-CLASS.	
DEPT. OF WATER SUPPLY	
GAS CO.	
QUANTITIES	EXCAVATION
LOTS	STRAIGHT CURB NEW
CITY	OLD CURB RESET
LOTS	CIRCULAR CURB
CITY	PAVING
	CONCRETE BASE
HOR. SCALE 1" = 100'	BOOK 388 PAGE 23
VER. SCALE 1" = 2'	DATE 3-6-39
PLAN	W.E. PROFILE
CHECKED 7-7-40 G.H.	GRADE
DATE	FO
COMPUTED	CHECKED
6/5/39	6/5/39
APPROVED	
DESIGNED BY	W. Williams
DRAWN BY	M. Bolan
TRACED BY	M. Bolan
CHECKED BY	J. Williams
APPROVED	
ENGINEER OF STREETS	ASS'T CITY ENGINEER
70 83	
INDEX TOPO	
NAME OF STREET	PLYMOUTH WADSWORTH
TYPE OF PAVEMENT	6" One Course Concrete
RECORD NO.	
FROM	
TO	
NUMBER OF SHEETS	1
SHEET NO.	1



DEPARTMENT OF PUBLIC WORKS DETROIT

CITY ENGINEER'S OFFICE ... DIVISION OF PAVING DESIGN

STREET PAVING PLAN

TERREY 60' WD.

506 N. WADSWORTH

TYPE OF PAVEMENT 6" One Course Concrete

SERIES P.P. SERIES - B

NO GAS IN THIS SECTION

EXISTING POOLS & BASINS

BENCH MARKS

F.B.M. 82-203, TERREY & PLYMOUTH, 5.5' PLYMOUTH 30' W. OF TERREY VERT. NAIL NE. FOOT 24" ELM. 142.375 - ARROW - HYD. E.S. TERREY 370' N. 145.84 - ARROW HYD. W.S. TERREY 300' N. 146.43 - OF WADSWORTH

SUMP MANHOLE BASINS BY W.P.A.

FIELD INVESTIGATION JULY 1939

WATER MAIN OK 8-17-39

SIDEWALKS O.K. FOR GRADE EST. SEPT. 4, 1941

DRAINAGE COMPLETED WADSWORTH TO N.W. WADSWORTH PAVING COMPLETED 7-6-42

410760

145, 144, 143, 142, 141