

DEPARTMENT OF PUBLIC WORKS  
STREET PAVING PLAN

TEPPER

S. P. L. OF PARK GROVE  
N. P. L. OF LINNHURST

325AH-7  
414  
30

OLD MAP 11-19-43

C-324A	C-390	C-587	C-730	C-739B
C-325	C-524	C-730	C-730	C-588
C-325A	C-585	C-730	C-730	C-588
C-327	C-586	C-730	C-730	C-588

NOTE:  
RECORD DRAWING CONSTRUCTION FOR SELECTION  
MAY BE USED FOR OTHER PROJECTS  
EXISTING STRUCTURES WHETHER OR NOT INDICATED  
ON PLANS

PLAN SCALE: 1" = 100'  
STREET WIDTHS: 1" = 50'  
DRAINAGE COMPLETED: 7-23-49  
PAVING COMPLETED: 8-22-50

SEE SHEET 1 OF 3

1" = 100'  
1" = 2'

1648 47  
3-50  
3-24-50  
J.E.  
5-5  
D.B.

*J. S. Barber*  
*Superior*  
*Martin R. Traker*  
DEPUTY

PET. # 414 LOUIS RABUT 2-8-50

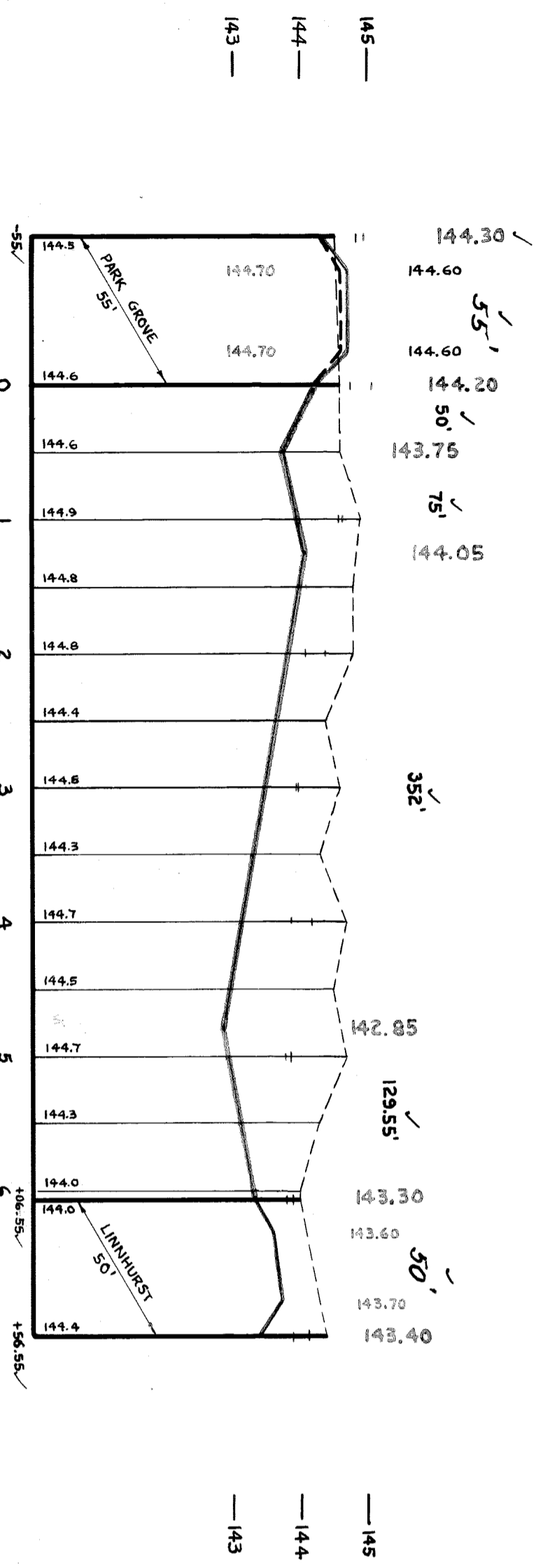
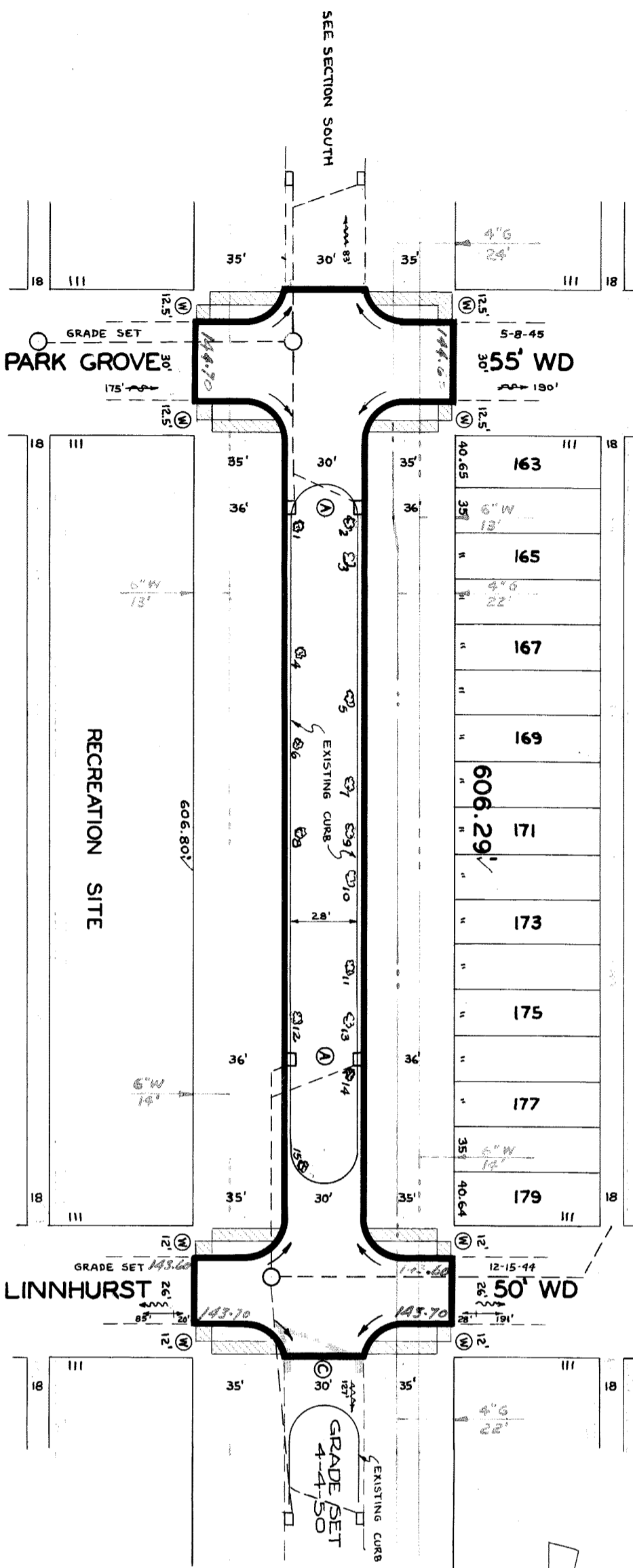
BENCH MARKS  
P.L.B.M. #60-252A N.E. COR. GREINER & GRUBNER  
ARROW OF HYD AT N.E. COR. TEPPER & PARKGROVE.  
ARROW OF HYD AT N.W. COR. TEPPER & LINNHURST.  
P.L.B.M. # 93-256 S.W. COR. HOOVER & SEVEN MILE.  
ELEV.  
142.027 ✓  
147.89 ✓  
146.64 ✓  
145.607 ✓

NOTES  
AT (A) ADJUST TOPS OF 4 EXISTING CATCH BASINS USING FLAT TYPE FRAMES & GRATES.  
SEE NOTE PERTAINING TO CASTINGS.\*

- AT (C) CONSTRUCT 2 STD PIPE CATCH BASINS WITH STD. FRAMES & GRATES AS REQUIRED. CONNECT TO EXISTING OUTLETS AS SHOWN. SEE STD DRWGS C-326A & C-524.
- AT (B) CONSTRUCT 1644 SQ. FT. OF STANDARD 4" SIDEWALK.
- ADJUST TOPS OF 2 EXISTING SEWER MANHOLES.
- ADJUST TOP OF 1 WATER MANHOLE.

- CONTRACTOR SHALL GRUB & REMOVE 14'-4" TO 12" TREES & 1'-1/2" TO 18" TREE AS INDICATED ON PLAN AT UNIT BID COST PER TREE.
- DIRT ROADWAYS AT ENDS OF PAVEMENT SHALL BE GRADED BACK & STONED 6" DEEP UNIFORMLY FOR A DISTANCE OF 10 FT. TO MEET EXISTING GRADES. 99 CU YDS INCLUDED UNDER EXCAVATION TOTALS FOR COST.
- \* CONTRACTOR SHALL FURNISH NEW CASTINGS FOR ALL ADJUSTED BASINS & MANHOLES EXCEPT WHEN SALVAGED CASTINGS ARE AVAILABLE & THEIR USE PERMITTED BY THE ENGINEER. A DEDUCTION OF \$15.00 FOR EACH TOP SO USED SHALL BE MADE FROM THE ORIGINAL CONTRACT PRICE OTHERWISE THE SALVAGED CASTINGS MUST BE HAULED TO D.P.W. YARDS AT STATE FAIR & JOHN R. STS.
- ALL CURBS WITHIN STREET INTERSECTIONS TO BE SEPARATE TYPE II OR INTEGRAL TYPE III, EXCEPT AS OTHERWISE NOTED.

SEE SHEET 3 OF 3 FOR EXCAVATION PROCEDURE



TREE REMOVAL SCHEDULE

NO.	LOCATION	SIZE	DISTANCE FROM EAST P.L.
1	STA 0+63	10"	39'
2	STA 0+63	10"	64'
3	STA 0+98	8"	64'
4	STA 1+69	11"	39'
5	STA 2+03	16"	64'
6	STA 2+37	12"	39'
7	STA 2+70	9"	64'
8	STA 3+04	10"	39'
9	STA 3+06	10"	64'
10	STA 3+43	8"	64'
11	STA 4+11	9"	64'
12	STA 4+48	7"	39'
13	STA 4+48	10"	64'
14	STA 4+82	10"	64'
15	STA 5+68	7"	39'