

SEWER OK		JOB NO.	PROGRESS	QUANTITIES	LOTS	CITY	LOTS	CITY	SCALE	BOOK	PAGE	DATE	DESIGNED BY
INDEXED				EXCAVATION	1223		1223		1" = 2'	1556	12	11-19-43	J.P. HARTNER
REVISIONS:	ADDED NOTE 6-9-48 345.			STRAIGHT CURB NEW									
	CHANGE PLAN & PROFILE FROM EASTWOOD TO 7 MILE TO CONFORM TO 1947 LEVELS. A.F.B.M. SUPPLEMENTARY DRAWINGS:			OLD CURB RESET									
C-324-A	C-390	C-783		PAVING 8" & 9" V.B.	231		231						
C-325	C-524	C-739		PAVING 8" UNIF. 8" V.B.	399		399						
C-326-A	C-565	C-733A		WALKS - 50 FT.	110		110						
C-327	C-586	C-733B		M.H.S. ADJUST	936		936						
				CBS - CONSTR.	2		2						
				DEPT. OF WATER SUPPLY									
				GAS CO.									

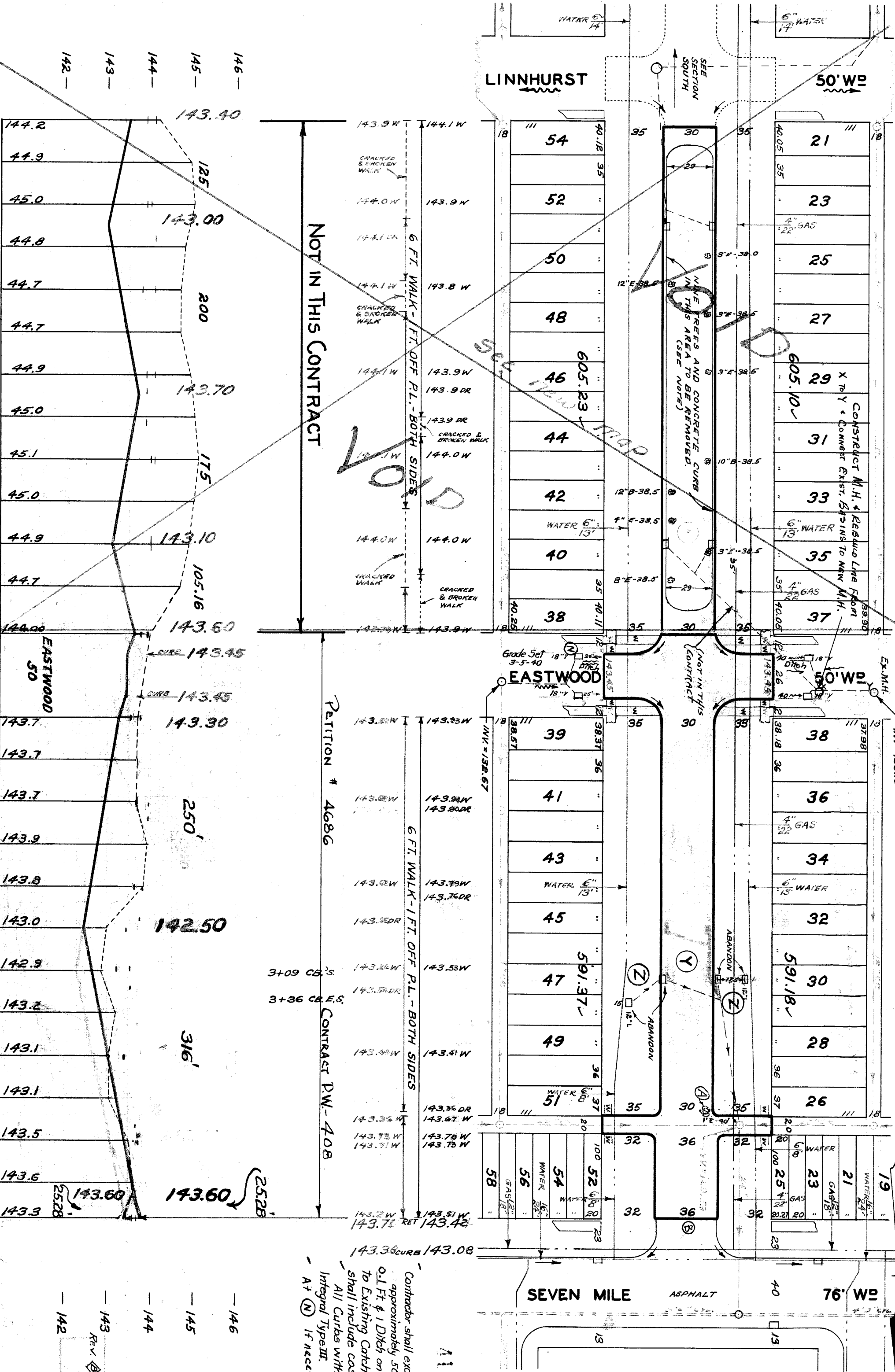
DESIGNED BY	DRAWN BY	TRACED BY	CHECKED BY	APPROVED	ENGINEER OF STREETS	ASS'T CITY ENGINEER
J.P. HARTNER			ELI	<i>J.P. Hartner</i>	<i>W. Wallace</i>	<i>Walter R. Tucker</i>

PLAN	PROFILE	GRADE	COMPUTED	CHECKED
J.P.H.	J.P.H.	J.P.H.	554	95
E.S.	E.S.	E.S.	554	95

RECORD NO.	INDEX NO.	T.O.P.	NO.
20	60		

NAME OF STREET	S.P.L. OF STREET	EASTWOOD	S.P.L. OF ROAD	CONTRACT PW	NO. OF SHEETS
N.P.L. OF LINNHURST	S.P.L. OF EASTWOOD		7 MILE ROAD	408	1

TYPE OF PAVEMENT: 8:6:8
UNIFORM AT STREET INTERSECTIONS: 30 & 36'



NOTES:

Contractor shall excavate & grade 1' ditch on Eastwood, W. Side of Teppert, approximately 50 Ft. to existing Catch Basin with average depth of 5.1 Ft. Eastwood to S.P.L. - 7 MILE RD ONLY 0.1 Ft. & 1' Ditch on Eastwood, E. Side of Teppert approximately 35 Ft. to Existing Catch Basin with average depth of 0.1 Ft. Contractor shall include cast in Excavation traps.

All Curbs within Street Intersections to be separate Type II or Integral Type III.

At (Z) If necessary adjust top of 1' existing Catch Basin at unit cost for Basin adjustment.

BENCH MARKS

Arrow on hyd. N.W. cor. of Teppert & Linnhurst	146.64
W. Side of W. Walk between Lot nos. 29 & 30, 320 Ft. N. of Linnhurst	143.98
S.E. cor. of first step to house No. 18961 Teppert	145.35
Arrow on hyd. N.W. cor. of Beland and Seven Mile	146.29
P.L.B.M. No. 60,208 - Boat Spk. in N. Side of 30 in. Elm on S. Side of Seven Mile 90 Ft. East of Konczal	143.406

PLAN SCALE DISTORTED

Contractor shall furnish & install 6" Flat Top Catch Basin Frames & Grates, Backfill Sewer Pipe Trenches under paved section with approved Sand/Gravel Material.

At (Z) Construct 36" Sq. Ft. of Std. 4" Sidewalk.

At (Y) Remove 1'-0" Elm Tree. Include cost in Excavation Total.

Contractor shall remove conc. header & broken asphalt back of junction as required. Fill with cold patch to meet new grade & include cost in excavation total.

CONSTRUCT 2' - 18" x 12" MODIFIED Y-BASINS COMPLETE USING 1 FT LENGTH TO OBTAIN SHALLOW OUTLET & CONNECT AS SHOWN.

DIRT ROADSWAYS AT ENDS OF PAVEMENT SHALL BE GRADED BACK & STONED & DEEP UNIFORMLY FOR A DISTANCE OF 10 FT. TO MEET EXISTING GRADES. INCLUDE COST IN EXCAVATION TOTALS. ADJUST TOPS OF 6" SEWER OR WATER MANHOLES.

ABANDON 4 EXISTING "Z" TYPE BASINS REMOVE BASINS & PLUG OUTLETS ON FILL BASINS WITH CLASS "C" CONCRETE.

Contractor shall haul all old castings to D.P.W. Yard at State Fair & John R.

410711

NOTE: SEE DWG. C-1317 FOR EXTRA EXCAV. & FILL OF EXISTING ROADSWAYS IN E.P.W. BEGON.

PAVING COMPLETED