

REVISION	OLD MAP 2-22-45
C-324A	C-587
C-325	C-733
C-326A	C-585
C-327	C-734

NOTE:
 GRADE SURVEYING CONTRACTOR
 MUST CHECK ALL DETAILING FOR CORRECTING ON
 EXISTING STRUCTURES (MANHOLES OR NOT INDICATED)
 BEFORE WORKING.

PLAN SCALE DISTORTED
 1"=100'
 STREET WIDTH: 1"=50'

ORANGE COMPLETED 8-25-48
 PAVING COMPLETED C.C. 1-3-51

QUANTITY	UNIT	EST. PRICE	PERCENT	TOTAL

SEE SHEET 1 OF 2

PROJECT NO.	1723	PAGE	15
DATE	5-12-50	BY	L.F.K.
CHECKED BY	L.F.K.	DATE	5-12-50
DESIGNED BY	L.F.K.	CITY	SYRACUSE

APPROVED BY: *L.F. Keys*
 L. F. KEYS
 DEPUTY CITY ENGINEER

APPROVED BY: *Martin R. Foster*
 Martin R. Foster
 DEPUTY CITY ENGINEER

DEPARTMENT OF PUBLIC WORKS DETROIT
 CITY ENGINEER'S OFFICE - DIVISION OF PAVING DESIGN
 STREET PAVING PLAN
 SYRACUSE

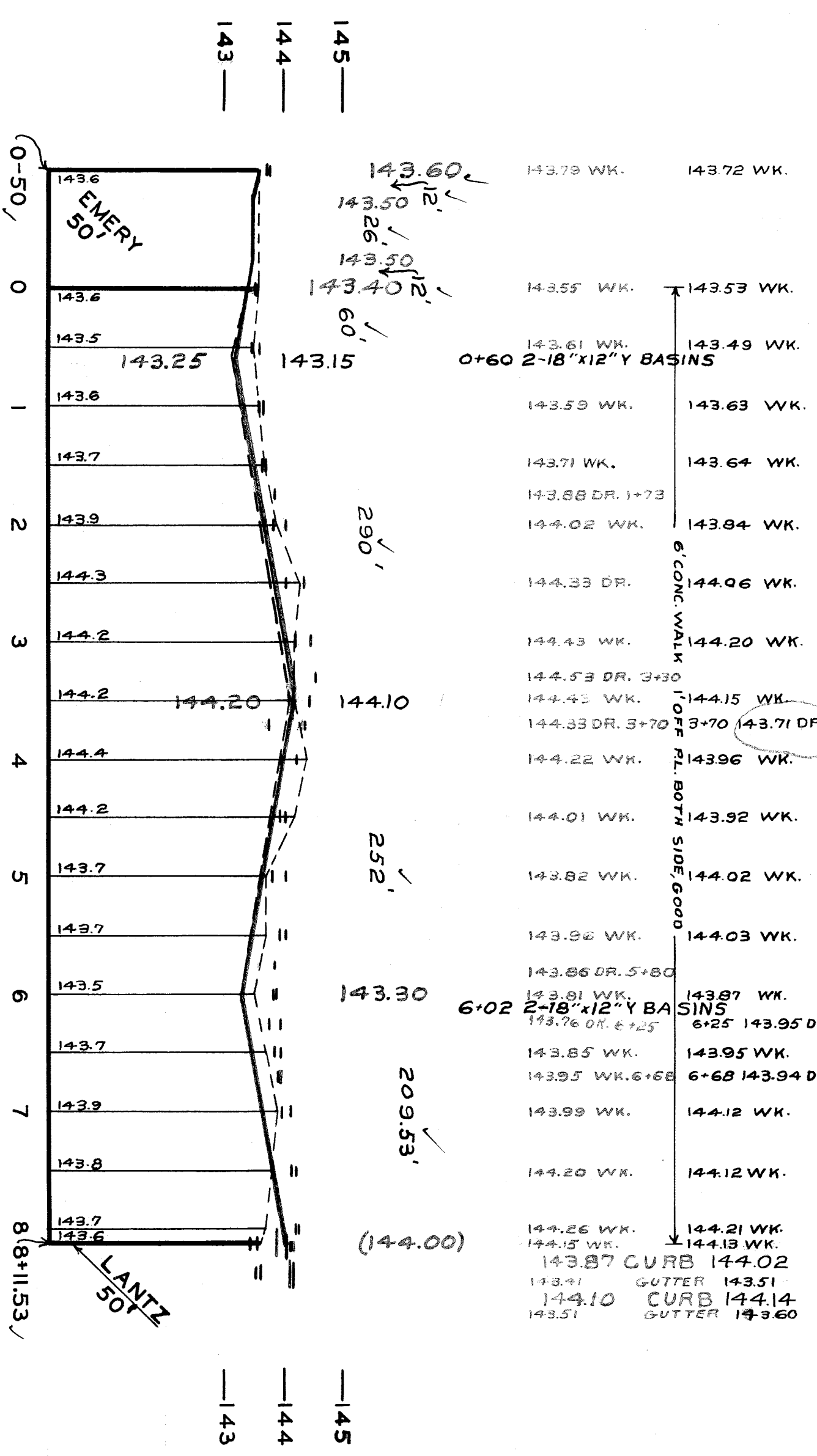
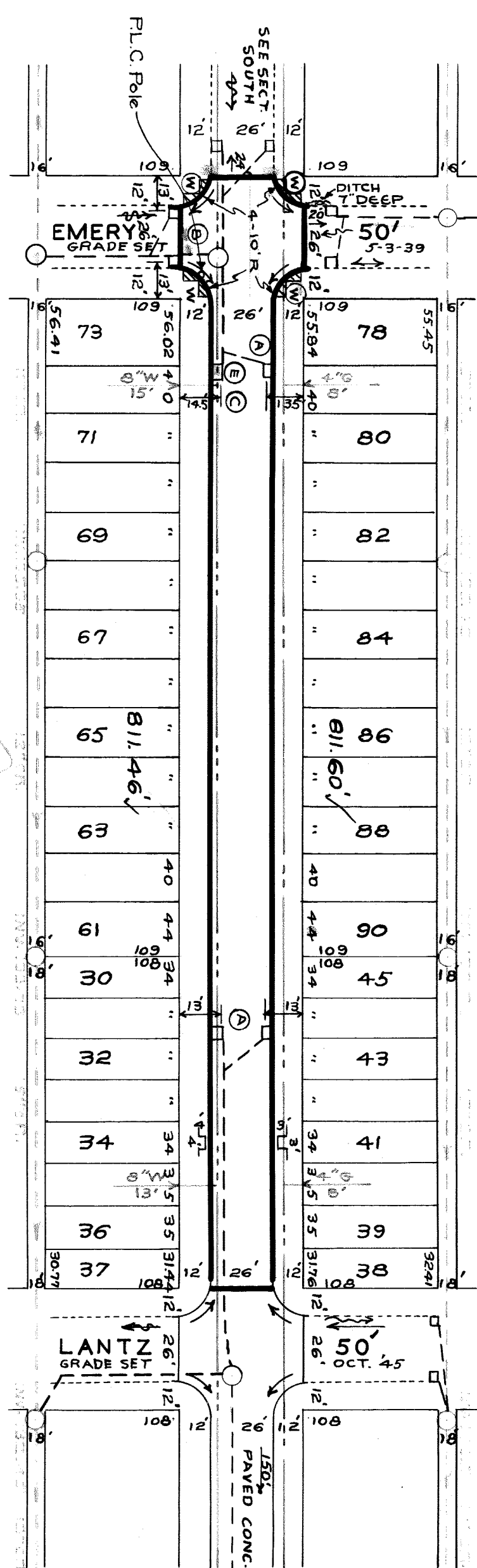
S.P.L. OF EMERY ✓
 S.P.L. OF LANTZ ✓

325A-3
 804
 2
 26

PET. NO 804 THEO. RUSANKO 3-14-50

BENCH MARKS:

PLBM # 92-255 SE COR. MOUND & 7 MILE
 PLBM # 92-254 SE COR. MOUND & OUTER DR.
 ARR. ON HYD. E.S. SYRACUSE. O.P. NO. 19380
 ARR. ON HYD. S.E. COR. SYRACUSE & LANTZ
 148.887 ✓
 143.487 ✓
 147.39 ✓
 147.229 ✓



- NOTES:** (SHEET 2 OF 2)
- ADJUST TOPS OF EXISTING CATCH BASINS USING FLAT TYPE FRAMES & GRATES.
 - SEE NOTE PERTAINING TO CASTINGS.
 - ADJUST TOPS OF EXISTING CATCH BASINS, IF NECESSARY, AT UNIT COST FOR CATCH BASIN ADJUSTMENT.
 - STD. PIPE CATCH BASIN WITH STD. FRAMES & GRATES AS REQUIRED.
 - CONNECT TO EXISTING PIPE BASIN, PLUG OUTLETS WITH CLASS "C" CONCRETE & REMOVE OR FILL BASIN WITH CLASS "C" CONCRETE.
 - CONSTRUCT 240 SQ. FT. OF STANDARD 4" SIDEWALK.
 - ADJUST TOP OF EXISTING SEWER MANHOLE.
 - ADJUST TOP OF WATER MANHOLE.
 - DIRT ROADWAYS AT ENDS OF PAVEMENT SHALL BE GRADED BACK & STONED 6" DEEP UNIFORMLY FOR A DISTANCE OF 10 FT. TO MEET EXISTING GRADES. 36 CU. YDS. INCLUDED UNDER EXCAVATION TOTALS FOR COST.
 - * CONTRACTOR SHALL FURNISH NEW CASTINGS FOR ALL ADJUSTED BASINS & MANHOLES EXCEPT WHEN SALVAGED CASTINGS ARE AVAILABLE & THEIR USE PERMITTED BY THE ENGINEER. A DEDUCTION OF \$15.00 FOR EACH TOP SO USED SHALL BE MADE FROM THE ORIGINAL CONTRACT PRICE, OTHERWISE THE SALVAGED CASTINGS MUST BE HAULED TO D.P.W. YARDS AT STATE FAIR & JOHN R. STS.
 - ALL CURBS WITHIN STREET INTERSECTIONS TO BE SEPARATE TYPE II OR INTEGRAL TYPE III.
 - CONTRACTOR SHALL CONSTRUCT UNIFORM DITCHES WHERE SHOWN ON PLAN TO AVERAGE DEPTH INDICATED OR AS REQUIRED IN THE FIELD.
 - 2 CU. YDS. INCLUDED UNDER EXCAVATION TOTALS FOR COST.

410729