

8817/1/19  
137 26

SEWER	REVISIONS	NOTES
C-324A	OLD MAP - 11-24-43	ADDED 3-2-49 S.W.T.
C-325		
C-326A		
C-327		

NOTE: BEFORE STARTING CONSTRUCTION CONTRACTOR MUST CHECK WITH UTILITIES FOR LOCATIONS OF EXISTING STRUCTURES WHETHER OR NOT INDICATED ON PLANS.

PLAN SCALE DISTORTED

LOTS & ALLEYS: 1"=100'

STREET WIDTHS: 1"=50'

ALL DRAINAGE COMPLETED 6-27-49

PAVING COMPLETED C.C. 10-11-49

QUANTITIES	ESTIMATED	FINAL
EXCAVATION CU YDS.	2,284	2,284
PAVING 8" CONC. 105' x 12"	5,579	5,579
6" CONC. DR. 5 FT.	111	111
8" UNIF. ADJUST	327	327
1" CONC. DR. 4 FT.	100	100
4" UNIF. ADJUST	576	576
MANHOLE RECONSTRUCTION	44	44
ADJUST	1	1
CONSTRUCT	12	12
CONSTRUCT	1	1
CONSTRUCT	1	1

NO. SCALE	1"=100'	BOOK	1704	PAGE	10
VER. SCALE	1"=4'	LEVELS	2-17-49		
DATE DRAWN	2-17-49				
PLAN	S.B.	PROFILE	J.P.	CHECKED	D.B.
CITY	3	152	1	619	76
TOTAL	3	391	1	625	63

DESIGNED BY: **Fanley Bulmer**

DRAWN BY: *[Signature]*

CHECKED BY: *[Signature]*

APPROVED BY: *[Signature]*

ASSIST. CITY ENGINEER

CONTRACT NO. **PW 943**

DEPARTMENT OF PUBLIC WORKS DETROIT

CITY ENGINEERS OFFICE - DIVISION OF PAVING DESIGN

STREET PAVING PLAN

**SUSSEX**

NAME OF STREET: **'N.P.L. ELLIS**

FROM: **'S.P.L. WESTFIELD**

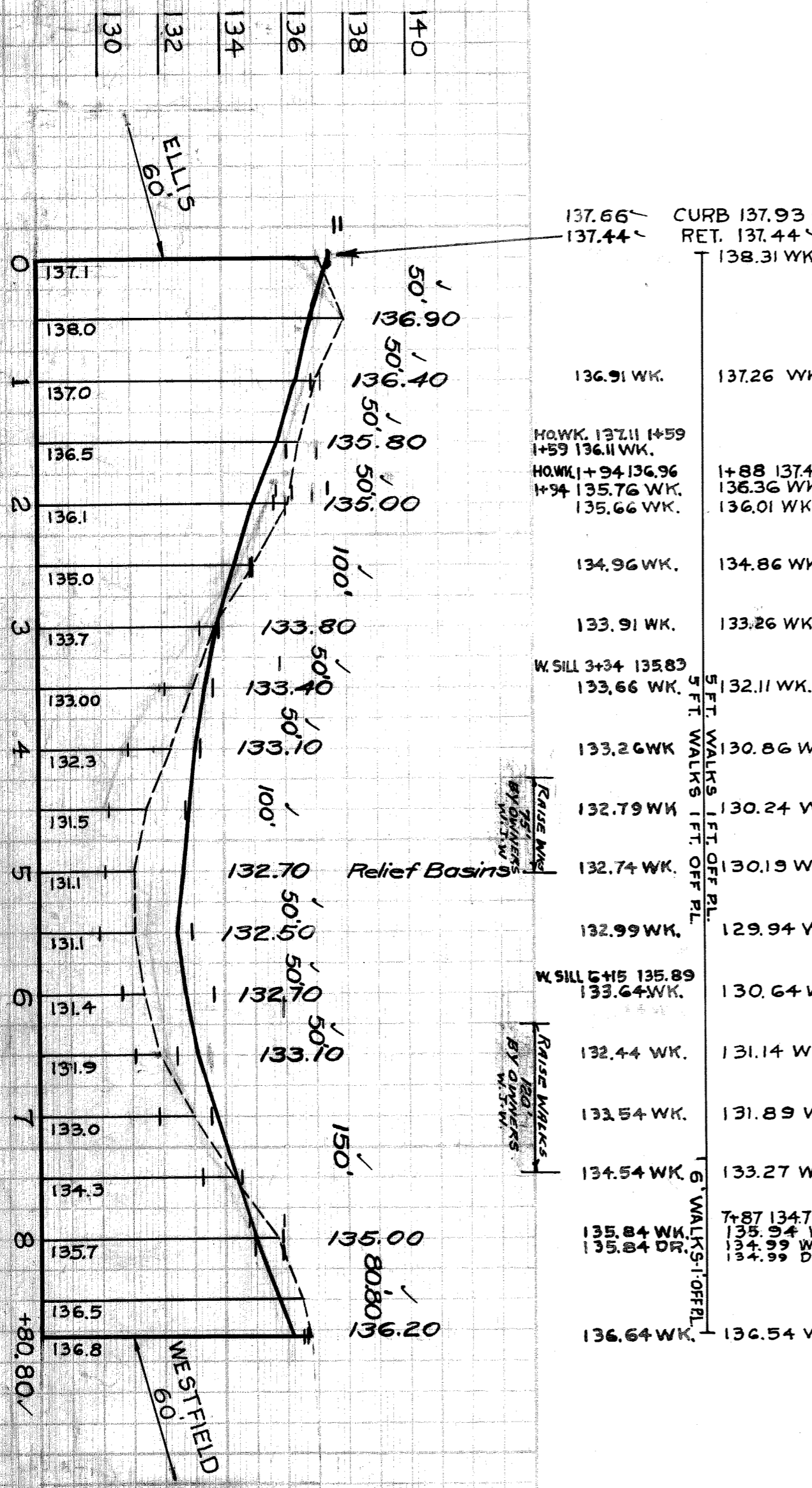
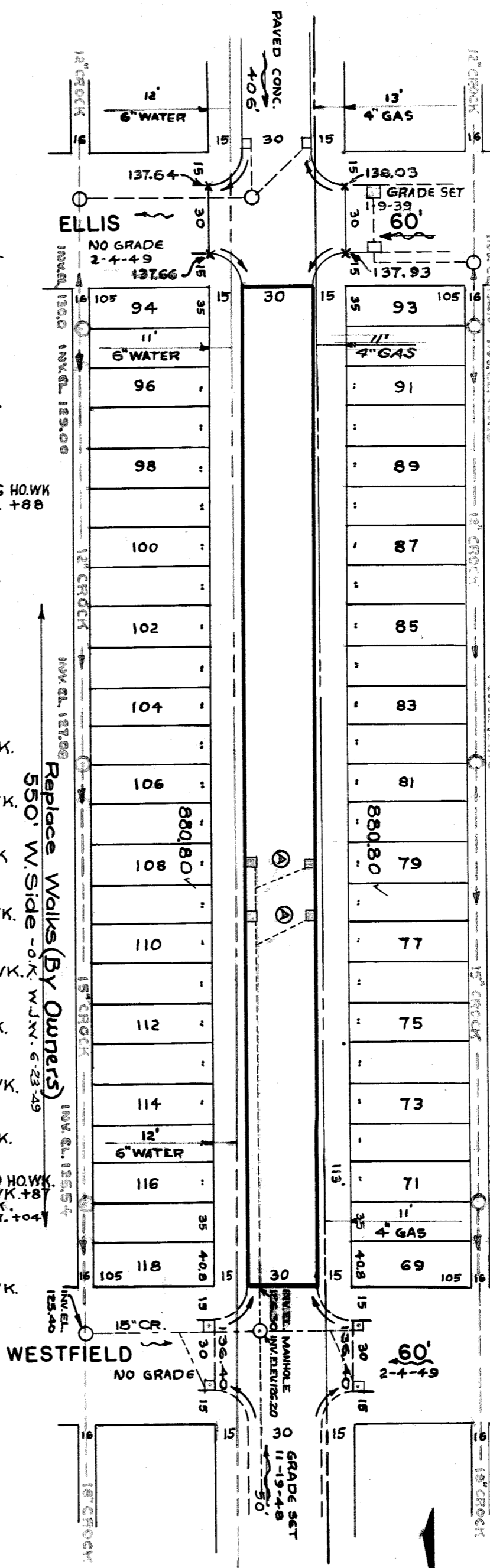
INDEX TO NO. **70 82**

ASSIGN NO. **325-5-23**

PETITION NO. **4187**

SHEET **1** OF **2**

DATE: **30'**



410711

BY OTHERS

CONTRACTOR SHALL FURNISH ALL NECESSARY MATERIALS, INCLUDING CASTINGS & SHALL HAUL ALL SALVAGEABLE MATERIALS TO D.R.W. YARD AT STATE FAIR & JOHN R. STS.

RAISE WALKS, WEST SIDE, BETWEEN STA. 2+75 & STA. 8+25, TO CONFORM TO CURB GRADE.

RAISE WALKS, EAST SIDE, BETWEEN STA. 4+25 & STA. 5+00, AND BETWEEN STA. 6+25 & STA. 7+45 TO CONFORM TO CURB GRADE.

EXCAVATED DIRT TO BE USED TO FILL CURB OLD WALKS ON WEST SIDE OF STREET

NOTE: -

ADJUST & EXISTING 18" DIA. BASINS WITH CAST IRON GATES & FRAMES.

ADJUST TOPS OF 2 WATER MANHOLES.

NOTE: PL OFF SET 5' TO + IN WALK - EAST SIDE ONLY

PETITION #4187 ELLIS TO WESTFIELD 12-14-49

Bench Marks

'P.L.B.M. # 82-250 A NORTH EAST CORNER JOY RD. AND WHITCOMB. 139.575 REC.

'B.M. ARROW ON HYDRANT AT SOUTH EAST CORNER OF ESSEX AND ELLIS. 141.20

'B.M. ARROW ON HYDRANT ON EAST SIDE OF SUSSEX AT STATION 4+15 136.09

'B.M. # 82-251A NORTH EAST CORNER OF CHICAGO AND WHITCOMB. 137.454 REC.

DRAINAGE TO BE INSTALLED BY D.R.W. PRINTS TO WISER 4-19-49

DRAINAGE COMPLETED 6-27-49