

NUMBER OF SHEETS 1
SHEET NO 1

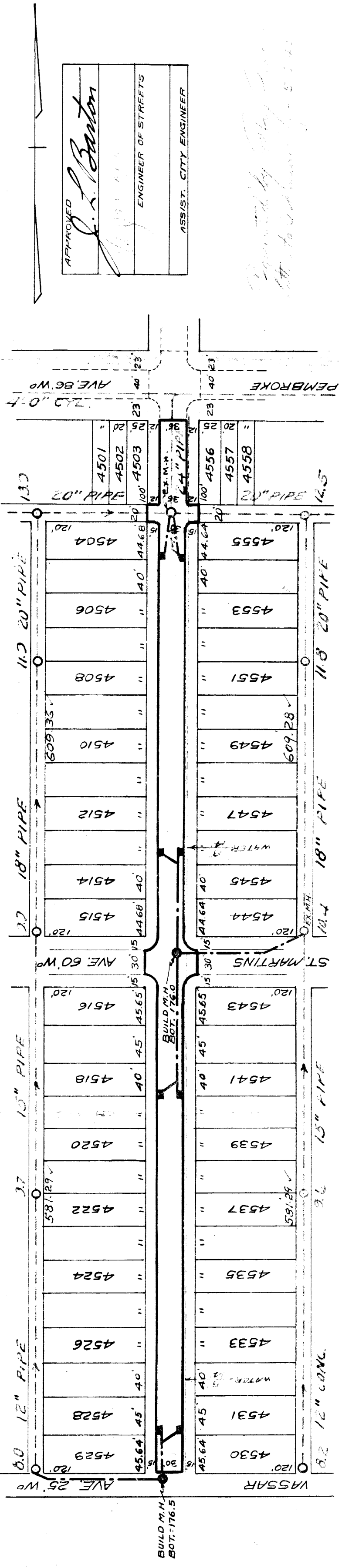
NAME OF STREET SUSSEX AVE.
FROM N.R.L. OF VASSAR AVE.
TO S.P.L. OF PEMBROKE AVE.

INDEX TO NO. 64 87

TYPE OF PAVEMENT PAVING WITH CURBS AND GUTTERS WIDTH 30' 4.36'

DATE 6-25-31
DESIGNED BY J. Cerullo
CHECKED BY J. Massey
DATE 5-19-41

NO.	DATE	BY	REVISION
954	5-3		
CITY	2,341.22	✓	1,170.61
STATE	160.00	✓	80.00
TOTAL	2,501.22	✓	1,250.61



APPROVED
L. L. Barton
ENGINEER OF STREETS
ASSIST. CITY ENGINEER

SEWER REC.
BOOK 4 PAGE 87
CHKD. BY J. Massey et al.

BENCH MARKS

FIG. 1" IN LOT 4515 NW COR. OF SUSSEX & ST. MARTINS ---183.21
SPK. IN POLE S.S. OF PEMBROKE 26'E. OF SUSSEX ---184.62

183.33	183.63 WK.	183.20	50'	183.20	183.33	0
183.51	183.63 WK.	182.90	150'	183.51	183.53	1
183.81	183.63 WK.	183.50		183.81	183.73	2
183.81	183.63 WK.	183.50		183.81	183.53 WK.	3
183.56	183.63 WK.	183.50		183.56	183.28	4
183.51	183.63 WK.	182.50	250'	183.51	183.93	5
183.81	183.63 WK.	182.50		183.81	183.46	6
183.51	183.63 WK.	182.50		183.51	183.53	7
183.81	183.63 WK.	182.50		183.81	183.23 WK.	8
183.51	183.63 WK.	182.50		183.51	183.23 WK.	9
183.81	183.63 WK.	182.50		183.81	183.03 WK.	10
183.51	183.63 WK.	182.50		183.51	183.20 WK.	11
183.81	183.63 WK.	182.50		183.81	183.20 WK.	12
183.51	183.63 WK.	182.50		183.51	183.40 WK.	13
183.81	183.63 WK.	182.50		183.81	183.70 WK.	14
183.51	183.63 WK.	182.50		183.51	183.60 WK.	15
183.81	183.63 WK.	182.50		183.81	184.00 WK.	16
183.51	183.63 WK.	182.50		183.51	183.80 WK.	17
183.81	183.63 WK.	182.50		183.81	184.10 WK.	18
183.51	183.63 WK.	182.50		183.51	184.10 WK.	19
183.81	183.63 WK.	182.50		183.81	184.30 WK.	20
183.51	183.63 WK.	182.50		183.51	184.30 WK.	21
183.81	183.63 WK.	182.50		183.81	184.35	22
183.51	183.63 WK.	182.50		183.51	184.00	23
183.81	183.63 WK.	182.50		183.81	183.90	24
183.51	183.63 WK.	182.50		183.51	184.10	25
183.81	183.63 WK.	182.50		183.81	183.20	26
183.51	183.63 WK.	182.50		183.51	159.32'	27
183.81	183.63 WK.	182.50		183.81	184.00	28
183.51	183.63 WK.	182.50		183.51	184.35	29
183.81	183.63 WK.	182.50		183.81	184.35	30

6' WKS. 2' OFF P.L. ON BOTH SIDES