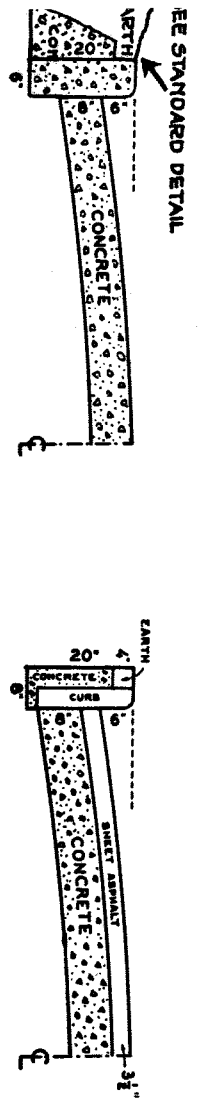


A-3097 B.P.-2-25-38

CROSS SECTIONS



AT NO.	A	RADIUS	TANG.	ARC	SEC.

QUANTITIES	LOTS	CITY	LOTS	CITY
EXCAVATION				
STRAIGHT CURB NEW				
OLD CURB RESET				
CIRCULAR CURB				
PAVING				
CONCRETE BASE				

VER. SCALE	1" = 10'	BOOK	1174	PAGE	67
PLAN	P.K.	PROFILE	W.L.C.	COMPUTED	
CHECKED	5-9-39	GRADE	1/6	CHECKED	5/24/38
LOT 1	1726/161	LENGTH			563.08
CITY	1681	LENGTH			84
TOTAL 2L	1894/161	LENGTH			947.08

DEPARTMENT OF PUBLIC WORKS DETROIT
 CITY ENGINEERS OFFICE - DIVISION OF PAVING DESIGN
STREET PAVING PLAN

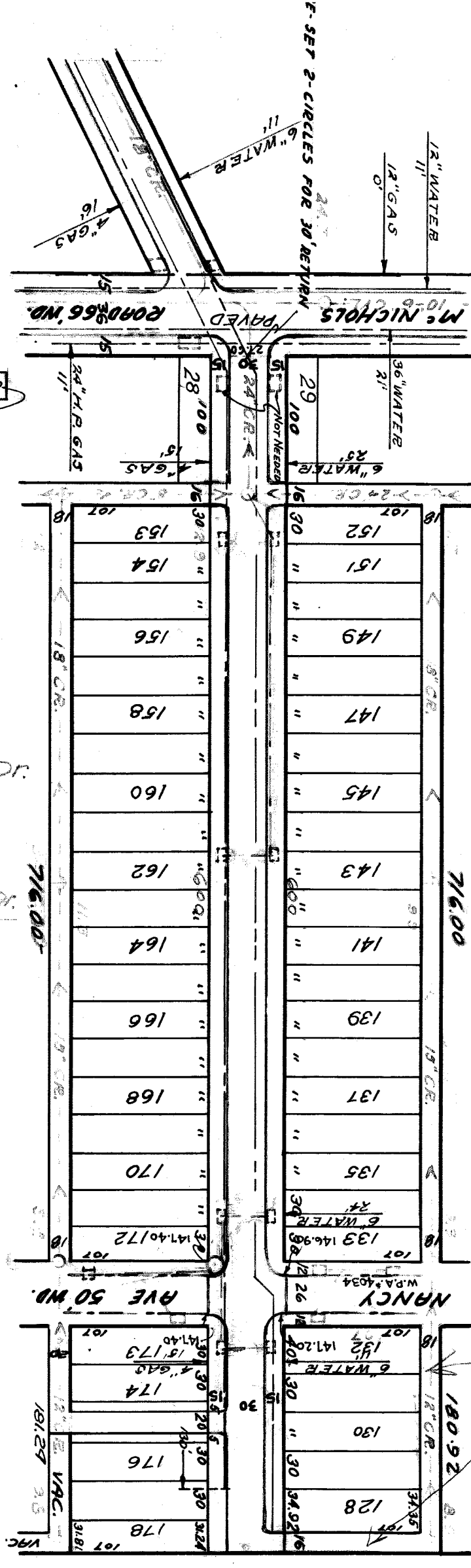
INDEXED

NAME OF STREET: SUNSET AVE 60' W.D.
 FROM: McNICHOLS AVE
 TO: NORTH OF NANCY

NUMBER OF SHEETS: 1
 SHEET NO.: 1

RECORD NO.: 1645

TYPE OF PAVEMENT: 8" Macadam - Oil Chips WIDTH: 30'



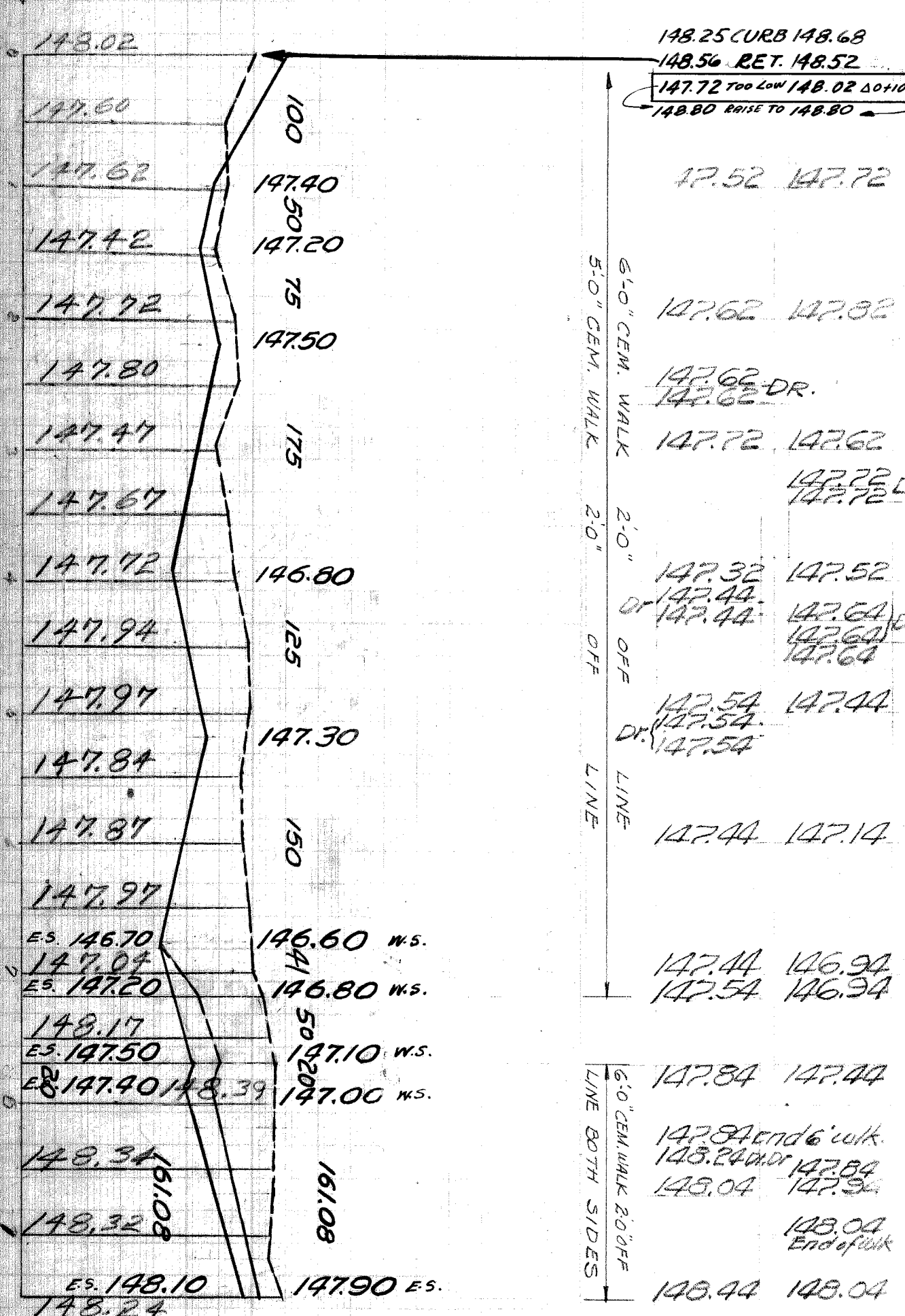
DESIGNED BY: J. Williams
 DRAWN BY: R. Shepard
 TRACED BY: J. Williams
 CHECKED BY: J. Williams

APPROVED: [Signature]
 ENGINEER OF STREETS
 ASST. CITY ENGINEER

WATER MAINS
 12-14-38
 OK

BENCH MARKS
 TOO HYD. W.S. SUNSET OPPOSITE #1773 150.49
 " " S.W. CORNER NANCY & SUNSET 150.12

EXISTING POOLS & BASINS
 NEW



REVISION FOR RILEY RETURN N. OF NANCY & E. OF SUNSET 10-18-39 V.B.

SUMP MANHOLE BASINS BY W.P.A. 3-25-37

DRAINAGE COMPLETED.....
 PAVING COMPLETED 12-9-39

110700