

1388 3/27/41

REVISIONS: OK (X) - 3/27/41

DATE: 3-18-46

PROJECT: SUNDERLAND STREET PAVING PLAN

LOCATION: 20'S. OF N. P.L. OF OUTER DRIVE

SCALE: 1" = 100'

STREET WIDTHS: 1" = 50'

NOTE: RECALCULATING CONSTRUCTION CONTRACTOR MUST CHECK WITH UTILITIES FOR LOCATIONS OF EXISTING STRUCTURES WHETHER OR NOT THEY CARRY OVER PLANS.

PLAN SCALE ENFORCED

LEFTS IN ALLEYS: 1" = 100'

STREET WIDTHS: 1" = 50'

QUANTITIES	ESTIMATED	FINAL
REGULATION CUR. YDS.	1 773	63
NEW CURB LIN. FT.	-	63
PAVING SQ. YDS.	4 186	212
SIDE WALK SQ. FT.	-	144
MANHOLES FOR STALLT	2	-
BASINS	6	-
CONCRETE	319	15
SEWERING LIN. FT.	-	-
SEWERING LIN. FT.	-	-

FROM DATE	TO DATE	NO. OF SHEETS	NO. OF SHEETS
1-100'	1-100'	1509	56
1-100'	1-100'	3-18-46	
5.5	5.5	196100	38100
2 1392100	2 1392100	196100	38100
76100	76100	196100	38100
2 46800	2 46800	1234100	

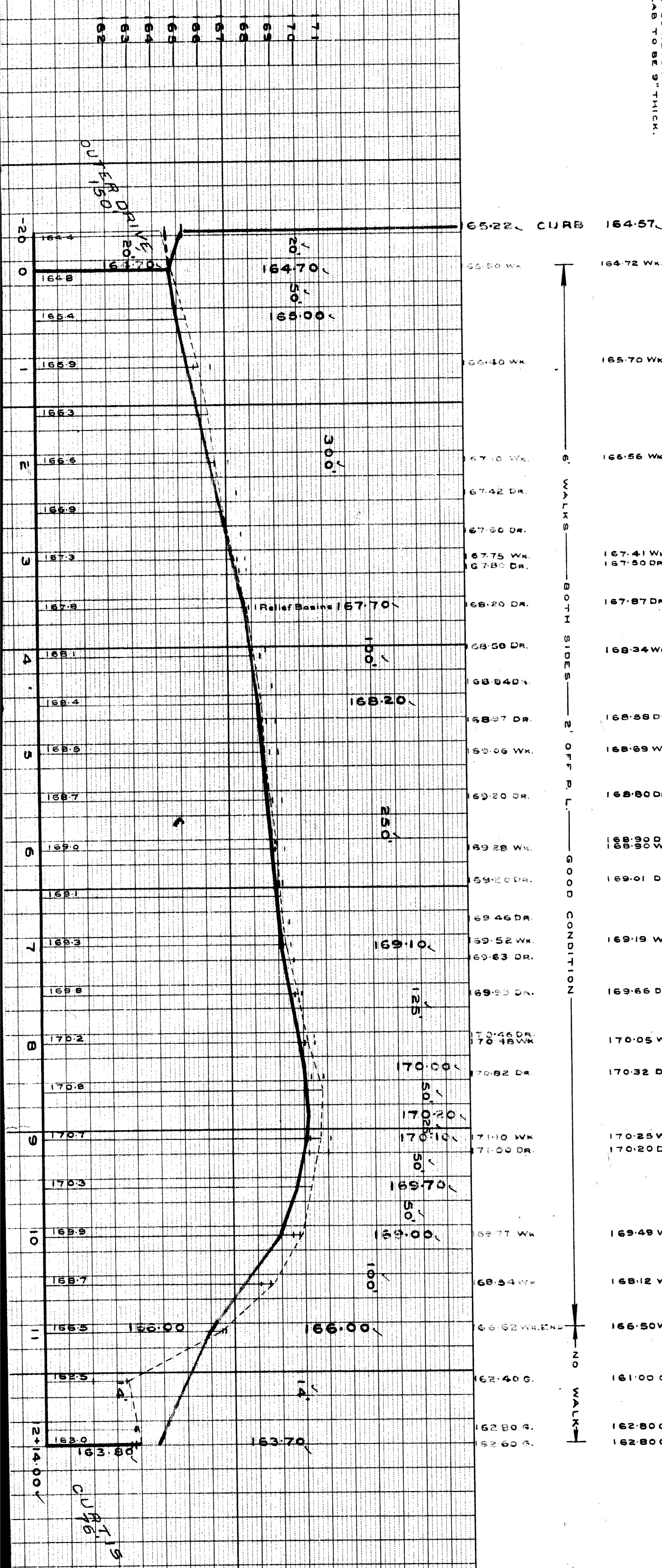
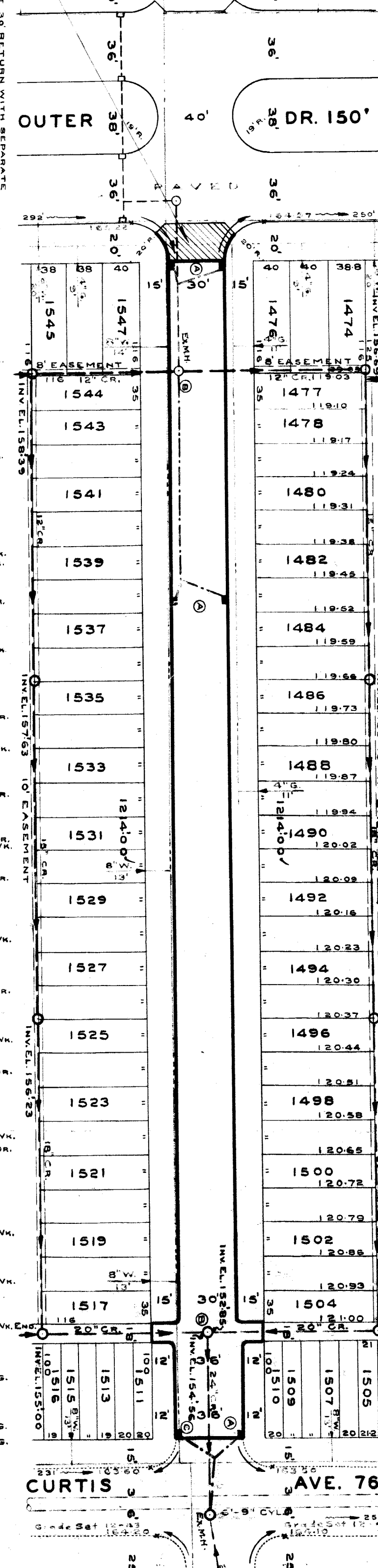
DESIGNED BY: R. Reip

DRAWN BY: L.G. VANTUYL

CHECKED BY: S. J. [Signature]

APPROVED BY: [Signature]

DATE: 3-18-46



DEPARTMENT OF PUBLIC WORKS DETROIT

CITY ENGINEERS OFFICE DIVISION OF PAVING DESIGN

STREET PAVING PLAN

SUNDERLAND

20'S. OF N. P.L. OF OUTER DRIVE

S. P.L. OF CURTIS AVE.

APR 197-10

7940

SHEET 1 OF 1 SHEETS

308.36'

65 104

NOTE: PRECISION LEVEL #104280-BRASS CAP IN CONCRETE MONUMENT AT S. E. CORNER OF MICHIGANS AND SUNDERLAND. ARROW ON HYDRANT AT N. E. CORNER OF OUTER DR. 16973. CROSS ON TOP OF LOWER CONCRETE STEP, S. END, AT ENTRANCE TO #17664 SUNDERLAND. AT N. E. CORNER OF CURTIS & SUNDERLAND. 16470.

NOTE: CONSTRUCT 5 STD. 18" DIA. Y-BASINS COMPLETE AND CONNECT TO OUTLETS AS SHOWN. ADJUST TOPS OF 2 EXISTING MANHOLES. CONSTRUCT 1 MODIFIED 18" DIA. Y-BASIN USING ONE FOOT LENGTH OF 18" STRAIGHT PIPE OVER THE Y TO CLEAR EXISTING WATER PIPE.

Requested by Lockwood Co. Inc. 2-13-46

1669 National Bank Bldg.