

DEPARTMENT OF PUBLIC WORKS
CITY ENGINEER'S OFFICE - DIVISION OF PAVING DESIGN
STREET PAVING PLAN

STRATHMOOR 7907

5 N. N.P.L. OF SEVEN MILE ✓
S.P.L. OF JAMES GOUZENS ✓

WIDTH 30' ± 36'

CARD NO. 64 87

DESIGNED BY: *Arthur E. P. W.*
DRAWN BY: *Arthur E. P. W.*
TRACED BY: *Scotton*
CHECKED BY: *Scotton*
APPROVED BY: *J. L. H. [Signature]*

| | | | | | |
|-----------|----------|------|----------|------|----------|
| NO. SCALE | 1" = 60' | BOOK | 1222 | PAGE | 71 |
| DATE | 1-21-46 | DATE | 3-21-46 | DATE | |
| PLAN | 1" = 60' | PLAN | 1" = 60' | PLAN | 1" = 60' |
| PER | 80291 | PER | 40146 | PER | 5321 |
| PER | 10643 | PER | 90934 | PER | 45467 |

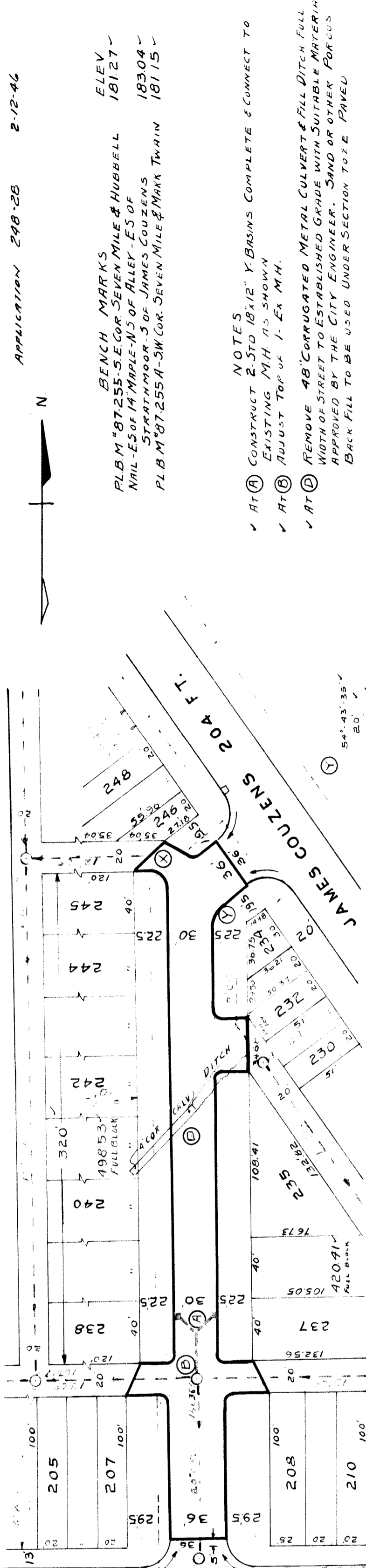
| | | |
|--------------|-----------|-------|
| QUANTITIES | ESTIMATED | FINAL |
| NEW CURB | 912 | 229 |
| NEW SIDEWALK | 1460 | 458 |
| NEW MANHOLES | 1 | 288 |
| NEW BASINS | 2 | 17 |
| NEW SEWERS | 53 | |

NOTE: BEFORE STARTING CONSTRUCTION CONTRACTOR MUST CHECK WITH UTILITIES FOR LOCATIONS OF EXISTING STRUCTURES WHETHER OR NOT INDICATED ON PLANS.

PLAN SCALE DISTORTED
LOTS & ALLEYS 1" = 60'
STREET WIDTHS 1" = 60'

DRAINAGE COMPLETED
PAVING COMPLETED

| | |
|-----------------|-----------------------|
| SEWER REVISIONS | SUPPLEMENTARY DETAILS |
| DRAWING NO. | |



APPLICATION 248-28 2-12-46

BENCH MARKS
P.L.B.M. #87255-S.E. COR. SEVEN MILE & HUBBELL ELEV. 18127 ✓
NAIL-ES OF 14 MAPLE-N.S. OF ALLEY-ES OF STRATHMOOR-S OF JAMES GOUZENS 18304 ✓
P.L.B.M. #87255A-S.W. COR. SEVEN MILE & MARK TWIN 18115 ✓

NOTES
✓ AT (A) CONSTRUCT 2-5 TO 18x12" Y BRASINS COMPLETE & CONNECT TO EXISTING M.H. AS SHOWN
✓ AT (B) ADJUST TOP OF 1-EX. M.H.
✓ AT (C) REMOVE 48" CORRUGATED METAL CULVERT & FILL DITCH FULL WIDTH OF STREET TO ESTABLISHED GRADE WITH SUITABLE MATERIAL APPROVED BY THE CITY ENGINEER. SAND OR OTHER POROUS BACK FILL TO BE USED UNDER SECTION TO BE PAVED

54°-43'-35" ✓
20' ✓
10.55 ✓
19.10 ✓
76.00 ✓

18274
18162 440
18169
18174
18167
18157
18149
18259 RETURNS 18259
18271 RETURNS 18245
18274
18228 RETURNS 18245

100' OF WALK ON EACH SIDE TO BE RAISED BY OTHERS

6' WALKS - 2' MARGIN - FAIR CONDITION

