

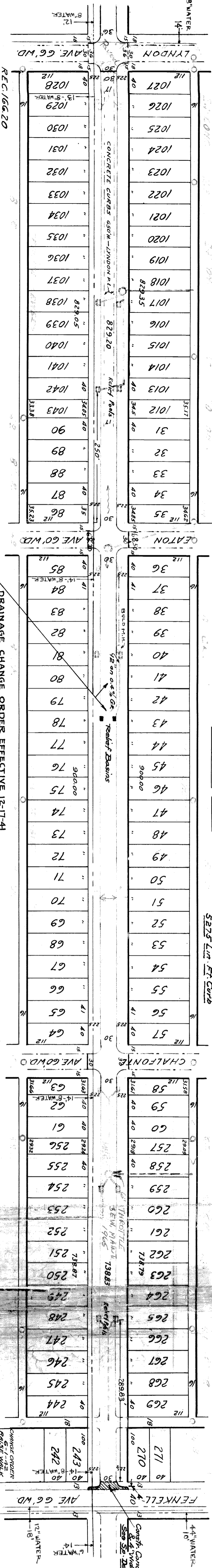
Flowers A.K. between Lyndon and Eaton, also Chalfonte and Fenkell
Sewers set OK between Eaton and Chalfonte.
Do not connect to 8" pipe.

STRATHMOOR AVE. 75' WD
FROM LYNDON TO FENKELL

CLASS "A" ONE CO. CONC. 30" WD
SERIES - J-J

5225 LIN. FT. CURB

B.M. R. SPK. IN PIN TREE N.E. H. BELL & LYNDON → 167.71
T.P. R. SPK. IN E.L. P. E. 395' N. OF LYNDON E.S. STRATHMOOR → 168.83
T.P. R. SPK. IN E.S. E.L. POLE N.E. STRATHMOOR & EATON → 170.54
T.P. R. SPK. IN E.S. 1. POLE N.E. STRATHMOOR & CHALFONTE → 172.88
T.P. R. SPK. IN E.L. POLE S.E. STRATHMOOR & FENKELL → 175.77



DRAINAGE CHANGE BY H. BUCKINGHAM

CURBS NOT IN -10-20-42 R.R.R.

CHANGE ORDER
5'-1" WIDE
NO. 200 WHEEL
100' ONLY
SIDE ONLY

SCALE: HORIZ. 1" = 100'	DATE: 4.10.31
VERT. 1" = 10'	L. R. W.
PLAN DRAWN BY	W. C. W.
PROFILE DRAWN BY	L. E. W.
COMPUTATIONS MADE BY	
CHECKED BY	
GRADE ESTABLISHED BY	

8.10.11	P. 32	3.436
Expansions		
N. O. Streets		
Old Curb Repair		
H. O. Sid. Curb by Cont.		
Painting		1.008
Curb Concrete Base		
Curb Concrete		
Rel. Stone		
Ordn. Header for Yds.		
TOTAL	4.900.06	2.450.03
CITY	276.-	138.-
TOTAL	5.176.06	2.588.03

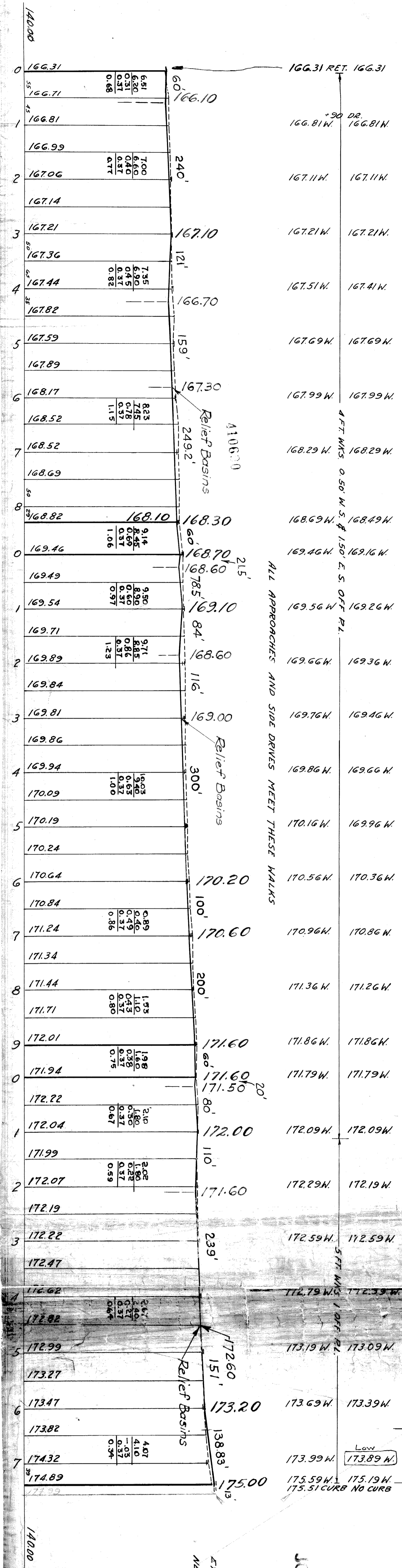
DRAINAGE REVISED
6-16-41

C.B. Locations by Field Inventory.
6-10-41 - Fickelhardt.

JOB-NO. D-1234

DRAINAGE COMPLETED
JULY 25
PAVING COMPLETED 1942
CURBS Comp. - STEEL T-8-43
EXISTING ROADS SHOWN THUS
NEW ROADS

Drainage completed 10/14/41



4 FT. WKS. 0.56' W.S. & 1.50' E.S. OFF. P.L.

ALL APPROACHES AND SIDE DRIVES MEET THESE WALKS

5 FT. WKS. 1.00' OFF. P.L.

Low

173.89 W.

NO CURB

175.51 CURB

Relief Basins

Relief Basins

Relief Basins

Relief Basins

DRAINAGE COMPLETED
JULY 25
PAVING COMPLETED 1942
CURBS Comp. - STEEL T-8-43
EXISTING ROADS SHOWN THUS
NEW ROADS