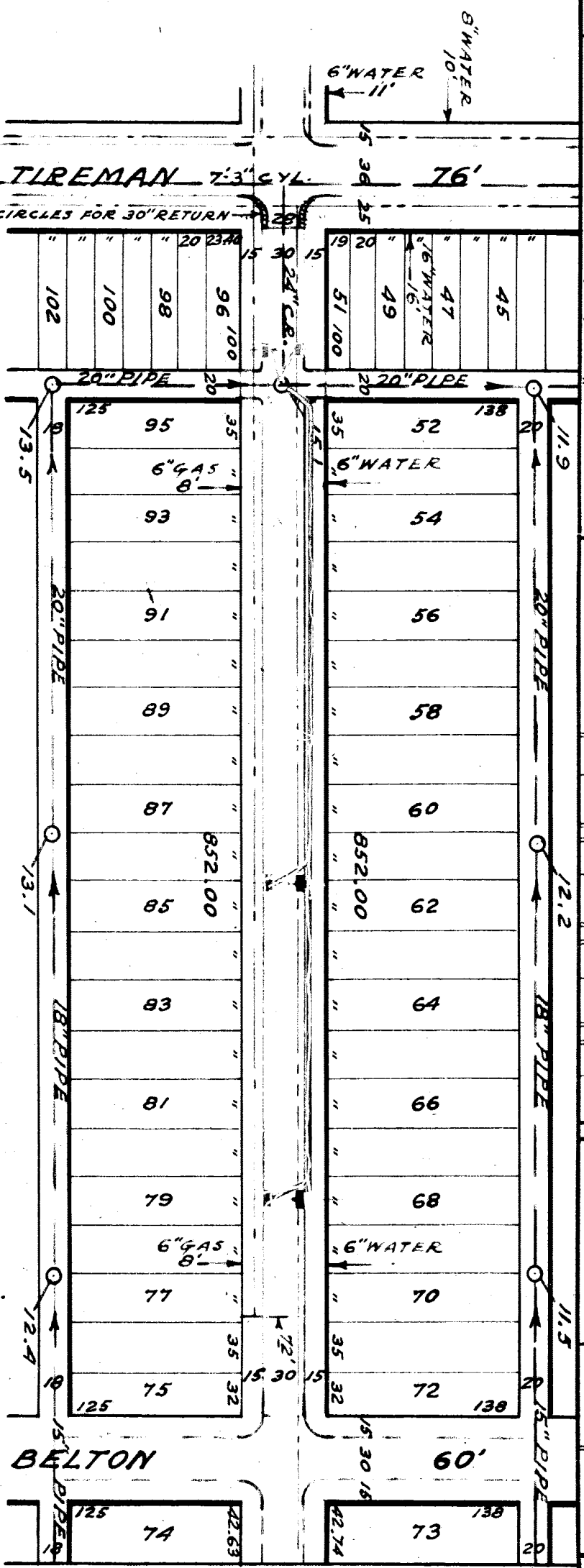
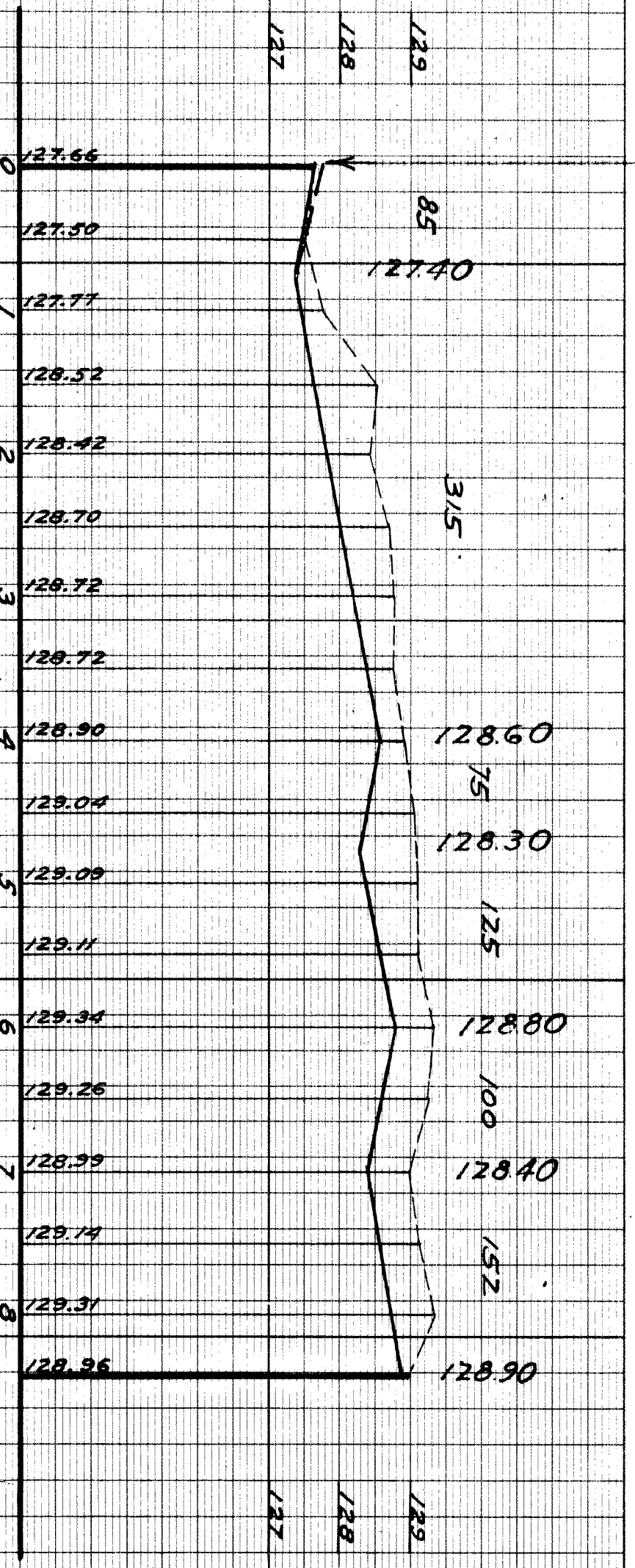


SEWER	JOB NO. C-2064	PROGRESS	QUANTITIES	LOTS	CITY	LOTS	CITY	HOR. SCALE 1"=100'	REV. 1/21 PAGE 20	DESIGNED BY	ENGINEER OF STREETS
INDEXED 11-8-39	BLUE PRINT ISSUED FOR:	START	EXCAVATION					VER. SCALE 1"=2'	DATE 11-2-39	DRAWN BY	ASS'T. CITY ENGINEER
REVISIONS:	GRADE ONLY	FINISH	STRAIGHT CURB NEW					PLAN	DATE	TRACED BY	
	CATCH BASINS		OLD CURB RESET					CHECKED		CHECKED BY	
	PAVING-CLASS-		CIRCULAR CURB					LOTS 2L	1/664	APPROVED	
			PAVING					CITY 2L	40		
			CONCRETE BASE					TOTAL 2L	1704.00		
								LENGTH	832.00		
								CITY	20.00		
								LENGTH	852.00		
								CITY			



RE-SET CIRCLES FOR 30" RETURN

127.83 RET.	127.74	128.02	129.18	129.21	129.29	129.31
127.82	127.66	128.51 DR.	128.83	129.28 DR.	129.29	129.31



CARD NO.	INDEX TOPO. NO.	RECORD NO.	NAME OF STREET	FROM	TO	TYPE OF PAVEMENT	WIDTH	NUMBER OF SHEETS	SHEET NO.
	15 81		STRAATHMOORE 60' WD.	TIREMAN	BELTON	NEW	30'	1	1

BENCH MARKS

- SP/KE IN 36" ASH N.E. COR. NOBBELT & TIREMAN 130.258
- ARROW ON HYD. N.W. COR. TIREMAN & STRAATHMOORE 130.988
- ARROW ON HYD. W.S. STRAATHMOORE 400' N. OF TIREMAN 132.159
- ARROW ON HYD. N.W. COR. BELTON & STRAATHMOORE 132.183

