

DEPARTMENT OF PUBLIC WORKS DETROIT
 CITY ENGINEERS OFFICE - DIVISION OF PAVING DESIGN
STREET PAVING PLAN
STOUT

CARD NO. **1519**
 INDEX TOP NO. **78109**
 NAME OF STREET: **N.P.L. OF CONSTANCE AVE.**
 FROM: **365' N. of S.P.L. of JOY ROAD.**
 TO: **8-578 ONE COURSE CONCRETE - INTEGRAL CURB**
 TYPE OF PAVEMENT: **CONCRETE - INTEGRAL CURB**
 PET: # **1900 BILTMORE BLDG. 4/25/50 THREMAN 70 JOY**
 NUMBER OF SHEETS: **2**
 SHEET NO.: **2**

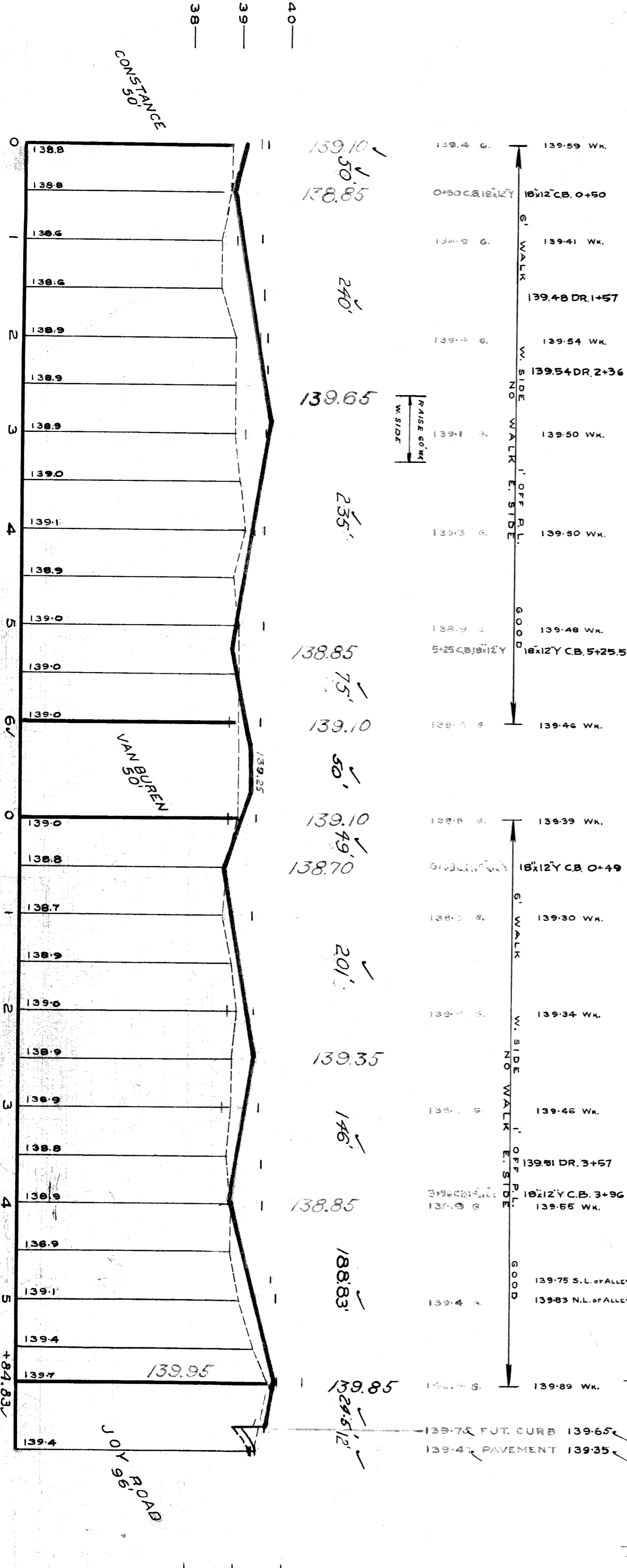
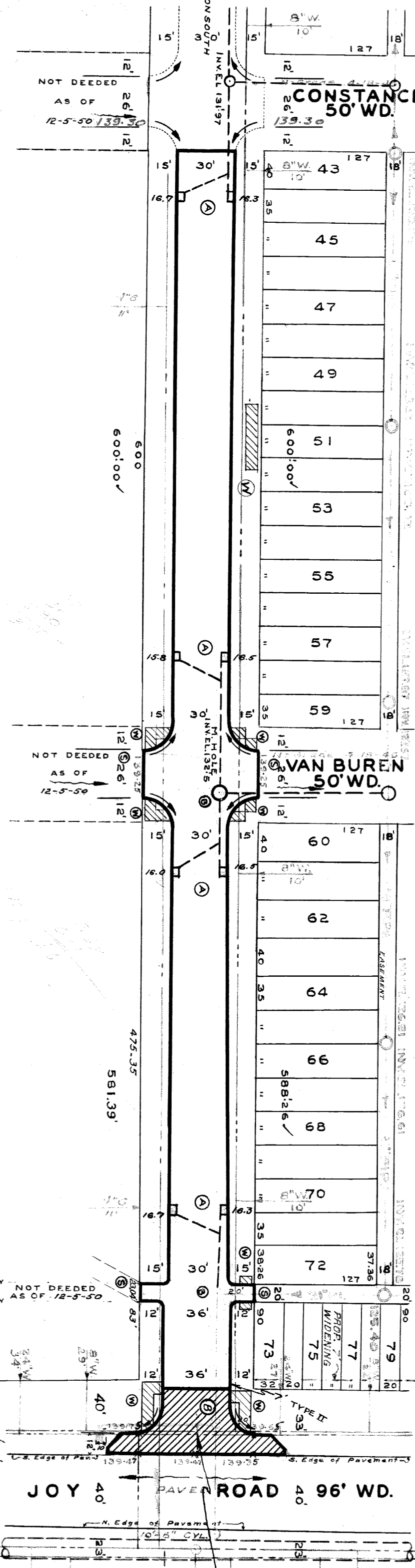
SEWER REVISIONS
ADDED GAS LINE 10-17-49 354/41
SEWERS ADDED & GRADE CHANGED. 9-12-50 3/BULMER
 CHECKED BY: **11-21-50**
 SUPPLEMENTARY DETAILS
 DRAWING NO.
 NOTE: BEFORE STARTING CONSTRUCTION CONTRACTOR MUST CHECK WITH UTILITIES FOR LOCATIONS OF EXISTING STRUCTURES WHETHER OR NOT INDICATED ON PLANS.
 PLAN SCALE DISTORTED
 LOTS & ALLEYS: 1" = 100'
 STREET WIDTHS: 1" = 50'
 DRAINAGE COMPLETED BY D.P.W. 11-25-49
 PAVING COMPLETED **C.C. 11-6-51**

QUANTITIES	ESTIMATED	FINAL	
		LOTS	CITY
EXCAVATION CU. YDS.			
NEW CURB LIN. FT.			
PAVING SQ. YDS.			
SIDEWALK SQ. FT.			
MANHOLES ADJUST			
CONSTRUCT			
ADJUST			
CONSTRUCT			
SEWERS 12" LIN. FT.			
SEWERS 15" LIN. FT.			

HIGH SCALE 1" = 100'
 VER. SCALE 1" = 2'
 PLAN L.G.V.T. **1/14** PROFILE L.G.V.T. **9/5** COMPUTED **0/0**
 CHECKED BY: **1/14** GRADE **9/5** CHECKED **9/5**
 COST ADVERTISING
 COST INSPECTION

DESIGNED BY **9/5**
 DRAWN BY **L.G. VAN TUYL**
 TRACED BY
 CHECKED BY **Scotter**
 APPROVED
Walter R. Tucker
 ASSISTANT CITY ENGINEER

BENCH MARKS	ELEV.
PLB.M. # 109-252A N.E. COR. PATTON & TIREMEN	136.632
ARROW ON HYDRANT AT NW COR. STOUT & TIREMEN	141.317
ARROW ON HYDRANT AT NW COR. STOUT & EDLTON	142.317
ARROW ON HYDRANT AT NW COR. STOUT & EDLTON	142.647
ARROW ON HYDRANT AT N.E. COR. OF STOUT & JOY RD.	142.883
P.B.M. # 10-254 N.E. COR. EVERGREEN & JOY RD.	139.051



FOR SYMBOLS (A) ETC. SEE STD. DET. DRAWG. NO. G321

410613