

DEPARTMENT OF PUBLIC WORKS DETROIT
 CITY ENGINEER'S OFFICE DIVISION OF PAVING DESIGN
STREET PAVING PLAN
STOUT
 FROM 45'S OF N.R.L. OF VASSAR
 TO 28'S S. OF N.R.L. OF PEMBROKE
 INCLUDING PEMBROKE INTERSECTION

51-11
 72 115
 325AU-2
 5116

DESIGNED BY: S. F. DAVIS
 DRAWN BY: McLean
 CHECKED BY: J. L. BROWN
 APPROVED BY: W. J. HARRIS

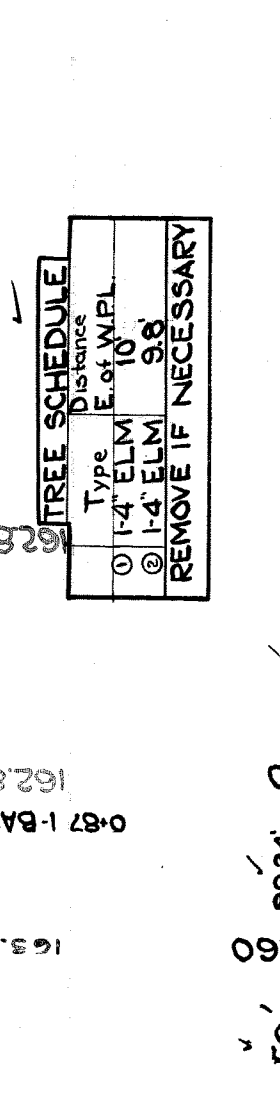
BOOK 1705 PAGE 88
 DATE DRAWN 4-51
 M.C.L. 2762.89
 GRADE 260
 S.F.D. 1381 45
 D.L. 130
 1511 45

QUANTITIES	ESTIMATED	CITY	LOTS	FINAL CITY
EXCAVATION	1579	325		
NEW CURB	3637	594		
PAVING	583	100		
8" UNIF. CONC. DR.	1128	36		
6" UNIF. CONC. DR.	9	9		
MANHOLE CONES	2	2		
RECONSTRUCTION	45	45		
SEWER 12" LIN. FT.	2	2		
SEWER 15" LIN. FT.	2	2		

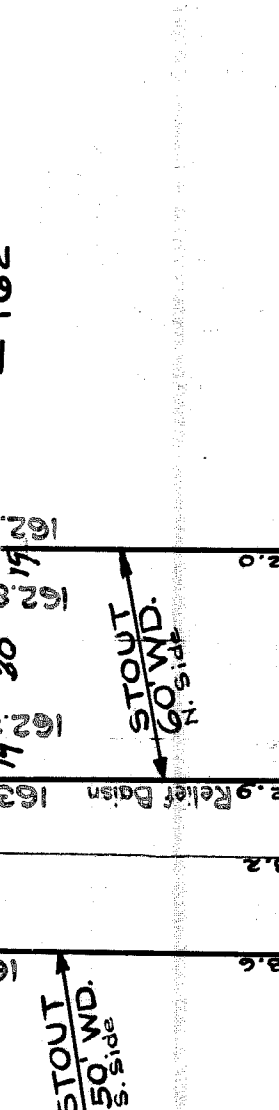
NOTE: BEFORE STARTING CONSTRUCTION CONTRACTOR MUST CHECK WITH UTILITIES FOR LOCATIONS OF EXISTING STRUCTURES WHETHER OR NOT HOLES SHOWN ON PLANS.
 PLAN SCALE DISTORTED
 LOTS & ALLEYS 1" = 100'
 STREET WIDTHS 1" = 50'
 DRAINAGE COMPLETED 9-3-46
 PAVING COMPLETED C.C. 8-26-52

SEWER	OLD MAP	4-19-38
C-324A	C-390	C-738B
C-325	C-424	C-738
C-326A	C-385	C-739
C-327	C-386	C-739A

REQUESTED BY LLOYD BURKHOLDER PET. # 5116 2-6-51
 BENCH MARKS
 R.I.B.M. # 115-255A N.E. Corner Seven Mile & Braille
 B.M. # 115-255B N.E. Corner Vassar & Stout
 B.M. # 115-255C N.E. Corner Vassar & Stout
 T. in Gate, Watergate 20' S of Pembroke, E.S. of Stout



NOTE: FOR SYMBOLS (A) ETC. SEE STD. DET. DRWG. NO. C-327



TREE SCHEDULE

Type	Distance	E. of W.P.L.
① 1-4' ELM	10'	
② 1-4' ELM	9.8'	

REMOVE IF NECESSARY

