

DEPARTMENT OF PUBLIC WORKS DETROIT

CITY ENGINEER'S OFFICE - DIVISION OF PAVING-DESIGN
STREET PAVING PLAN

SEWER C.A.	INDEXED	REVISIONS
11-27-71		

JOB NO.	PROGRESS
BLUE PRINT ISSUED FOR:	START FINISH
GRADE ONLY	
CATCH BASINS	
PAVING-CLASS.	
DEPT. OF WATER SUPPLY	
GAS CO.	

QUANTITIES	LOTS	CITY
EXCAVATION		
STRAIGHT CURB NEW		
OLD CURB RESET		
CIRCULAR CURB		
PAVING		
CONCRETE BASE		

HOR. SCALE 1" = 50'	BOOK 1 327 PAGE 74
VER. SCALE 1" = 2'	DATE 11-27-71
PLAN	PROFILE
CHECKED	GRADE
LOT 2L	3 516.03
CITY 2L	3 400.00
TOTAL 2L	3 886.03
LENGTH	1 738.01
LENGTH	1 700.00
LENGTH	1 928.01

DESIGNED BY	V.G.
DRAWN BY	J. Johnson
TRACED BY	J. Johnson
CHECKED BY	J. Johnson
APPROVED	
ENGINEER OF STREETS	
CITY ENGINEER	

CARD NO.

INDEX TO NO.

INDEX NO. 77 110

NAME OF STREET: STOUT AVE.

FROM: N.L. of WESTFIELD AVE.

TO: N.L. of JOY RD.

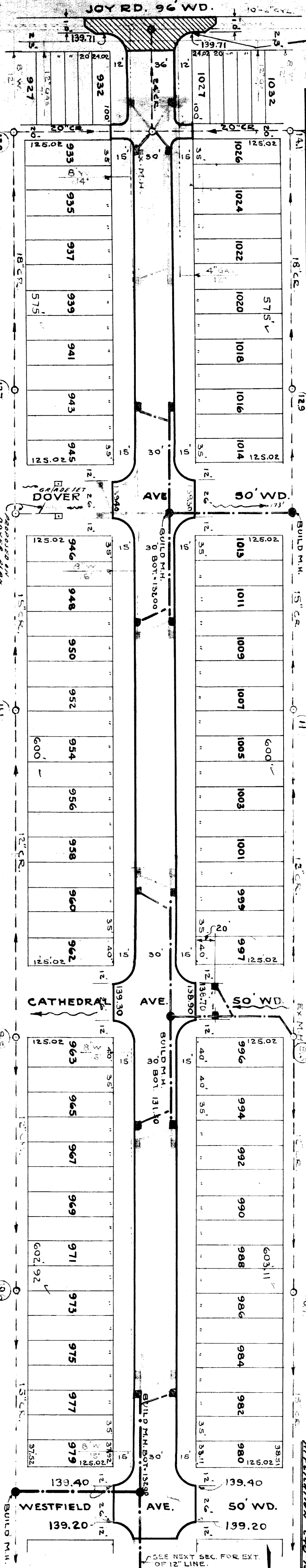
TYPE OF PAVEMENT: Application 448-155

WIDTH: 30' & 36'

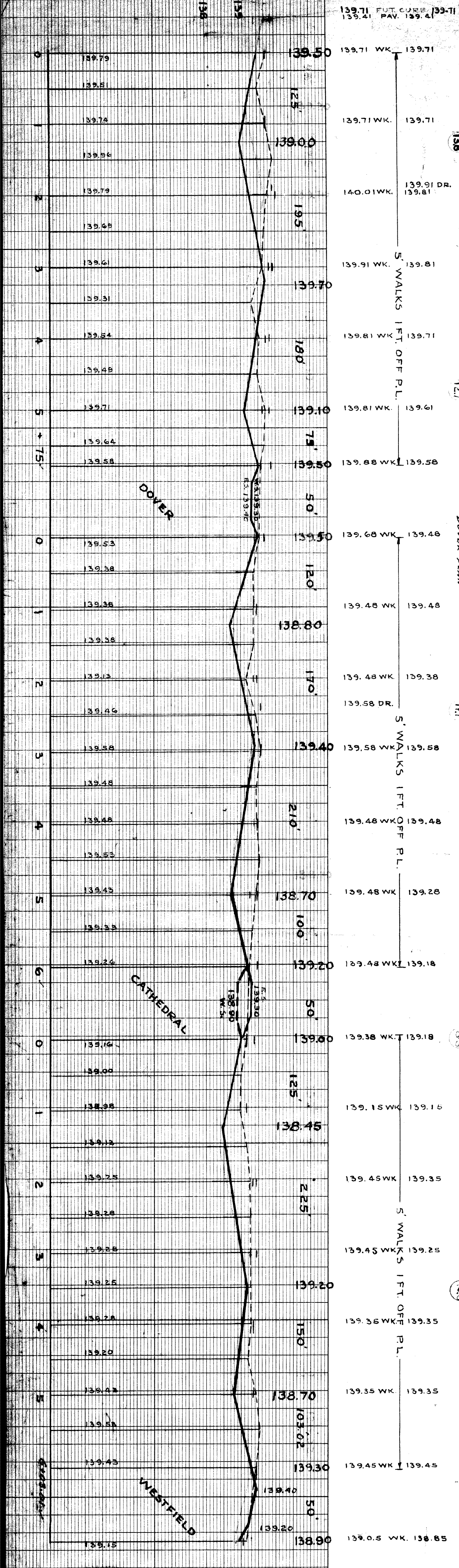
RECORD NO.

SHEET NO. 1

NUMBER OF SHEETS 1



BENCH MARKS	ELEV.
ARROW ON HYD. N.E. COR. JOY RD. & STOUT	142.76
ARROW ON HYD. S.E. COR. DOVER & STOUT	142.76
ARROW ON HYD. N.E. COR. CATHEDRAL & STOUT	142.30



DATE COMPLETED: _____

BY: _____