

CONTRACT NO. PW-606

DEPARTMENT OF PUBLIC WORKS
CITY ENGINEER'S OFFICE - DIVISION OF PAVING DESIGN
STREET PAVING PLAN

CARD NO. 76 112

INDEX NO. 76 112

T.O.P. NO. 76 112

RECORD NO. 76 112

NAME OF STREET: STOUT AVE.

FROM: 15' N. OF S. P.L. KENDALL AVE.

TO: N. P.L. ACACIA AVE.

TYPE OF PAVEMENT: 8" UNIFORM SLAB AT INTERSECTIONS, WIDTH 26 FT.

ASSIGNMENT NO: 302-12

PETITION # TOSS EARL R. SCHWARZ ET AL. 9-30-47
FORCED PAVING C.C. RES. 3-16-48

NOTE: P.L. OFFSET 5 FT. TO + IN WALK.

BENCH MARKS
P.L.B.M. # 112.253-A N.E. COR. BRAILE & SCHOOLCRAFT 144.936 REG. ✓
B.M. TOP OF HYD. S.E. COR. SCHOOLCRAFT & STOUT 149.13 ✓
B.M. TOP OF HYD. N.E. COR. STOUT & KENDALL 149.97 ✓
B.M. TOP OF HYD. OPPOSITE HOUSE 14184 STOUT 148.31 ✓
B.M. TOP OF HYD. N.E. COR. ACACIA & STOUT 148.75 ✓
P.L.B.M. # 112.252-A S.E. COR. BRAILE & LYNDON 146.724 REG. ✓

NOTES:
✓ CONSTRUCT 1 STANDARD 18"x12" FLAT TYPE BASIN & CONNECT TO EXISTING OUTLET AS SHOWN.
✓ RECONSTRUCT EXISTING 12"-L-BASIN, AT CURB LOCATION WITH 12"-L-FLAT TYPE BASIN WITH 1/2 TRAP GRATES IN TOP OF EXISTING OUTLETS AS SHOWN. B.M. AND TRAP TO BE ABANDONED IN EXISTING 5'-M.H. BASIN. PLUS OUTLETS WITH CLASS "C" CONCRETE. REMOVE TOP & FILL BASIN WITH SAND. SEE "DETAIL" "A" STD. DWG. C-390
✓ ADJUST TOPS OF 2 EXISTING 18"x12" BASINS WITH FLAT TYPE GRATES & FRAMES.
✓ ADJUST TOPS OF 2 EXISTING 12"-L-BASINS WITH FLAT TYPE GRATES & FRAMES.
✓ ADJUST TOPS OF 2 CATCH BASINS IF NECESSARY, AT UNIT COST FOR CATCH BASIN ADJUSTMENT.
✓ CONSTRUCT 564 SQ. FT. OF STANDARD 4" SIDEWALK.
✓ CONTRACTOR SHALL CONSTRUCT UNIFORM DITCHES WHERE SHOWN ON PLAN, 73 CU. YDS. IS INCLUDED UNDER EXCAVATION TOTALS FOR COST.
✓ ADJUST TOPS OF 4 WATER OR SEWER MANHOLES.
✓ BACKFILL SEWER PIPE TRENCHS UNDER PROPOSED PAVEMENT WITH APPROVED SAND-GRAVEL MATERIAL OTHERWISE FILL & TAMP WITH APPROVED EARTH LAYERS AS REQUIRED.
✓ DIRT ROADWAYS AT END OF PAVEMENT SHALL BE GRADED BACK & STONED 6" DEEP UNIFORMLY, FOR A DISTANCE OF 10 FT. TO MEET EXISTING GRADES, 702 CU. YDS. IS INCLUDED UNDER EXCAVATION TOTALS FOR COST.
✓ CONTRACTOR SHALL FURNISH ALL NECESSARY MATERIALS INCLUDING CASTINGS & SHALL HAUL ALL SALVAGEABLE MATERIALS TO D.R.W. YARD STATE FAIR & JOHN R.
✓ ALL CURBS WITHIN STREET INTERSECTIONS TO BE SEPARATE TYPE II OR INTEGRAL TYPE III.
✓ CONSTRUCT 2 STD. 12"x12" DOME TYPE BASINS & CONNECT TO EXISTING OUTLETS AS SHOWN

DESIGNED BY	PLURDY
DRAWN BY	
TRACED BY	
CHECKED BY	<i>Scaten R.R. Ream</i>
APPROVED	<i>W.S. Wallace</i>
ENGINEER OF STREETS	
ASST. CITY ENGINEER	<i>Martin R. Fisher</i>

NOR. SCALE 1" = 100'	BOOK 1932	PAGE 48
VER. SCALE 1" = 2'	DATE DWG. 6-16-48	COMPUTED P.M.
PLAN	CHECKED J.P.	LENGTH 814.00
CHECKED L.G.V.T.	J.P.	LENGTH 105.00
LOTS	21	LENGTH 910.00
CITY	21	LENGTH 10.70
WATER	21	LENGTH 203.50
WATER	21	LENGTH 26.25

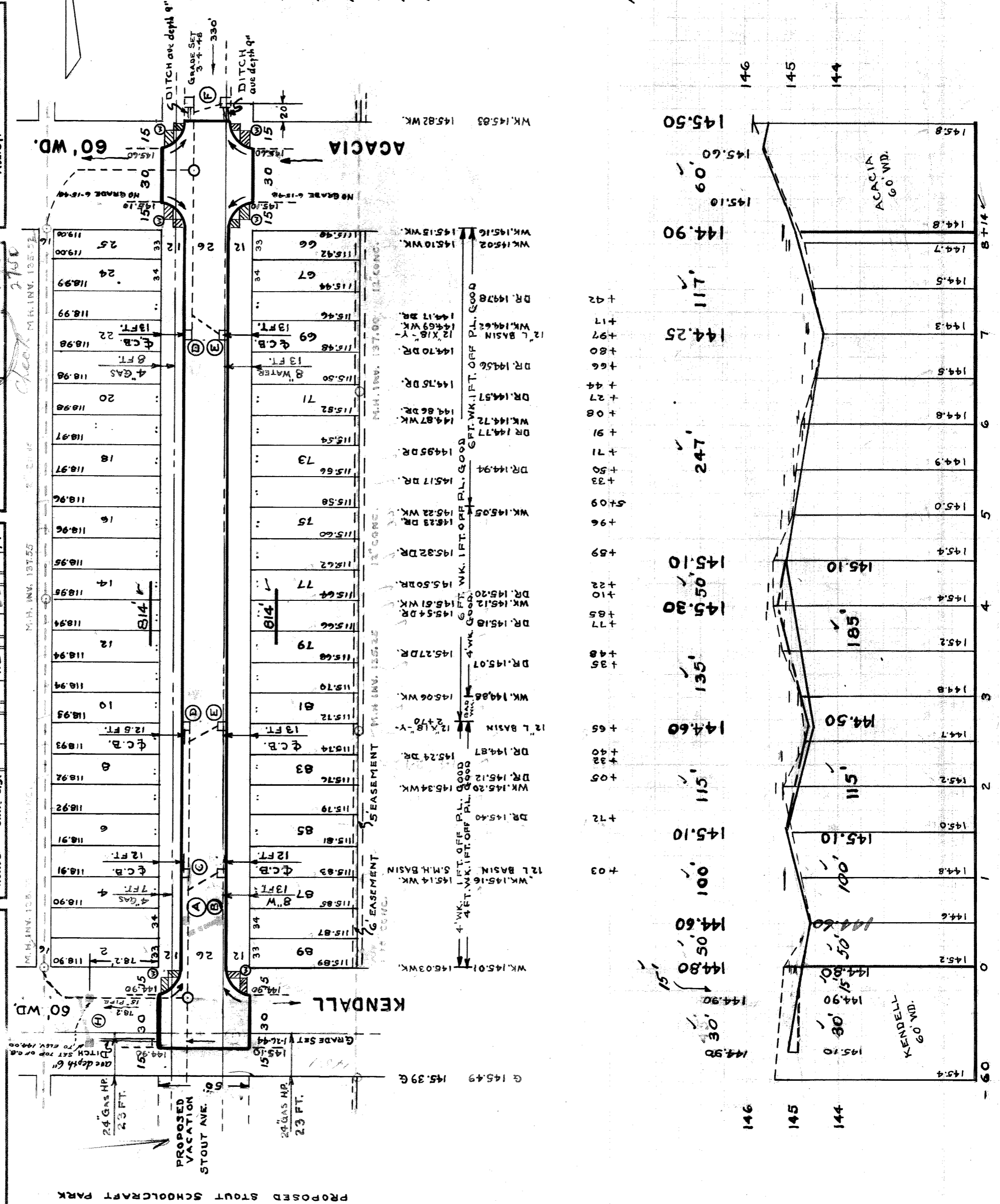
QUANTITIES	ESTIMATED	FINAL
EXCAVATION CU. YDS.	1,000	291
NEW CURB LIN. FT.	2,442	564
PAVING 8" SQ. YDS.	2,442	4
SIDEWALK SQ. FT.		1
MANHOLES ADJUST		4
CONSTRUCT		4
BASINS ADJUST		4
CONSTRUCT		4
SEWERS 12" LIN. FT.		63
SEWERS 18" LIN. FT.		418

NOTE: BEFORE STARTING CONSTRUCTION CONTRACTOR MUST CHECK WITH UTILITIES FOR LOCATIONS OF EXISTING STRUCTURES WHETHER OR NOT INDICATED ON PLANS.

PLAN SCALE DISTORTED
LOTS & ALLEYS 1" = 100'
STREET WIDTHS 1" = 50'

DRAINAGE COMPLETED 7-16-47
PAVING COMPLETED C.C. 12-21-48

SEWER	
REVISIONS	
SUPPLEMENTARY DETAILS	
DRAWING NO.	C-585
C-324-A	C-327
C-325	C-390
C-326-A	C-524
	C-733
	C-739
	C-739A
	C-739-B
	C-936



410664