

DEPARTMENT OF PUBLIC WORKS DISTRICT
CITY ENGINEERS OFFICE - DIVISION OF PAVING DESIGN
STREET PAVING PLAN

STOEPEL

129.41'S OF SPL SANTA MARIA

N.P.L. SANTA MARIA

PET # 390 9 AUDREY RICHARDSON 11-18-52

PROJECT NO.	3909
DATE	4-21-53
DRAWN BY	3909
CHECKED BY	
APPROVED BY	
ASSISTANT ENGINEER	

DATE	23
TIME	12-15-52
BY	da
FOR	Mat
NO.	50
DATE	79 41

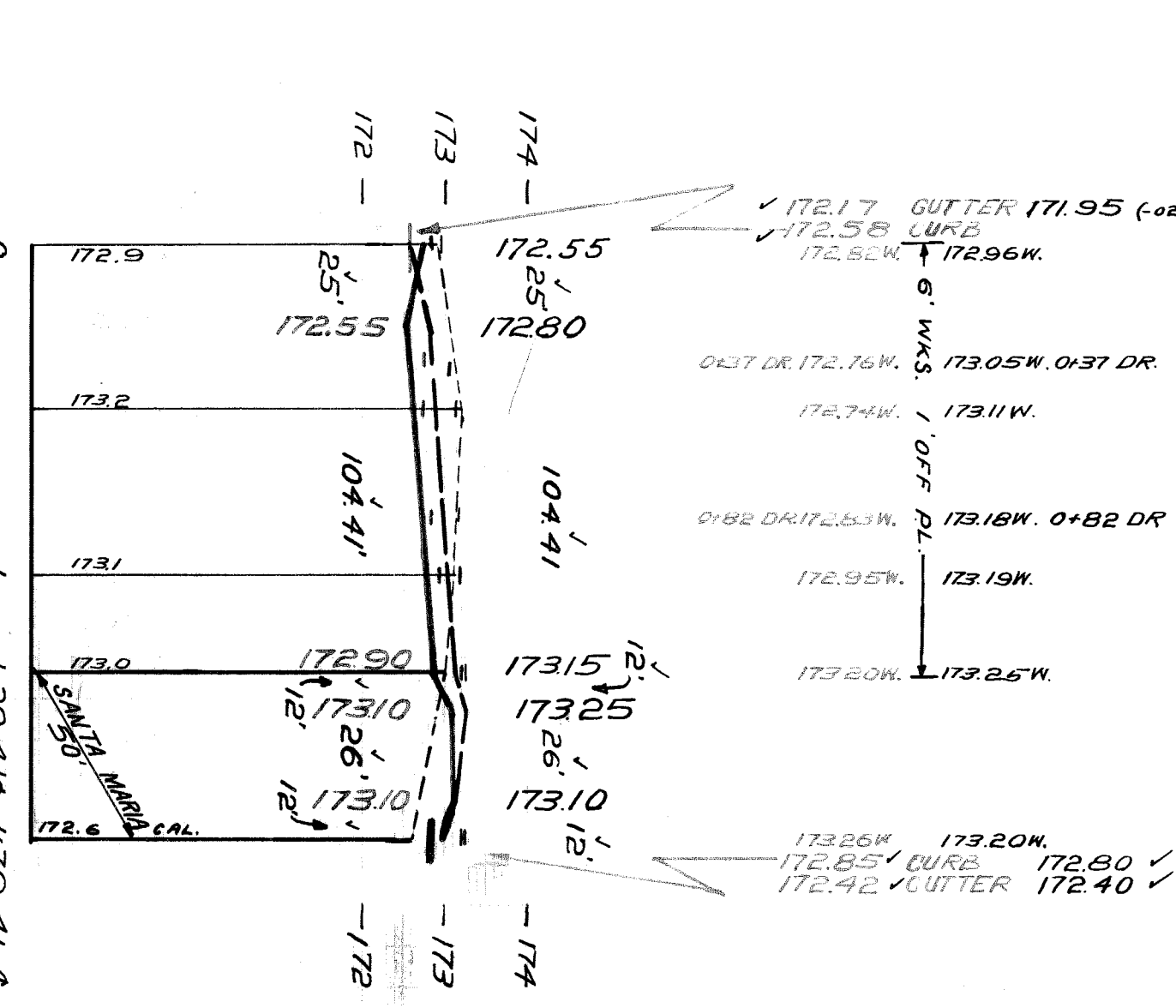
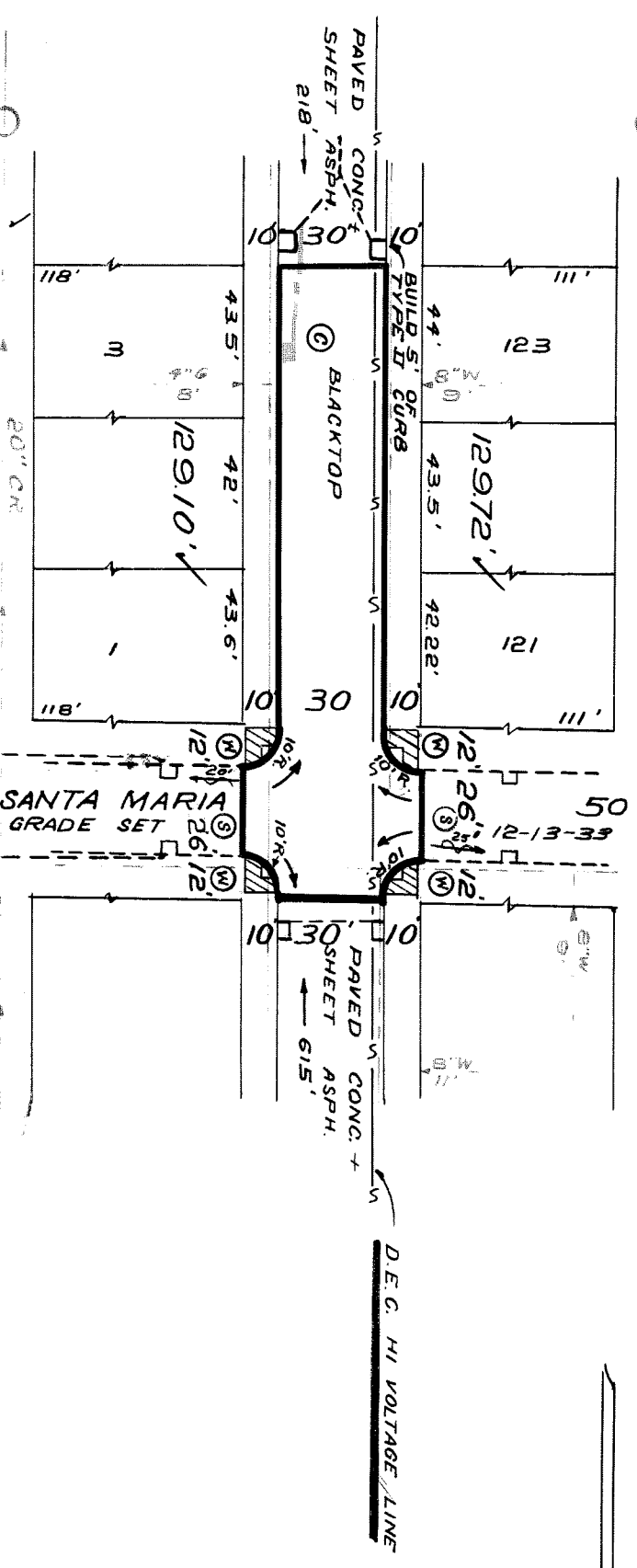
DATE	1742
TIME	12-15-52
BY	da
FOR	Mat
NO.	50
DATE	79 41

NO.	DATE	TIME	BY	FOR
123	10	10		
121	10	10		
120	10	10		
119	10	10		
118	10	10		

OK Repair 4/1/53
OLD MAP 8-7-28

PAVING CONTRACTOR
C.C. B-4-53

STREET WIDTHS 1"=50' 1'
DRAINAGE COMPLETED 7-31-53



BENCH MARKS
B.M. #26-2504 N.E. COR. 6MILE & OAK DR.
B.M. #26-250 NE. COR. 6MILE & LIVERNOIS
ARROW ON HYD. N.W. COR. SANTA MARIA & STOEPEL
ARROW ON HYD. W. SIDE STOEPEL OFF. HOUSE NO. 17167

NOTE: FOR SYMBOLS (W) ETC. SEE STD. DWG. C-327.
+1IN WALK 5' OFF E.P.L. SE. COR. SANTA MARIA

NOTE: CONTRACTOR IS TO CALL MR. J. FRANK DIR. FOREMAN,
TR-3900, EXT. 276, 24 HRS. BEFORE STARTING
CONSTRUCTION FOR LOCATION OF D.E. LINE.

PRELIMINARY FIELD INSPECTION REPORT MADE 4-21-53

410631