

DEPARTMENT OF PUBLIC WORKS DETROIT
CITY ENGINEER'S OFFICE - DIVISION OF PAVING DESIGN
STREET PAVING PLAN

STANSBURY

N.P.L. PEMBROKE

S.P.L. OF NORFOLK

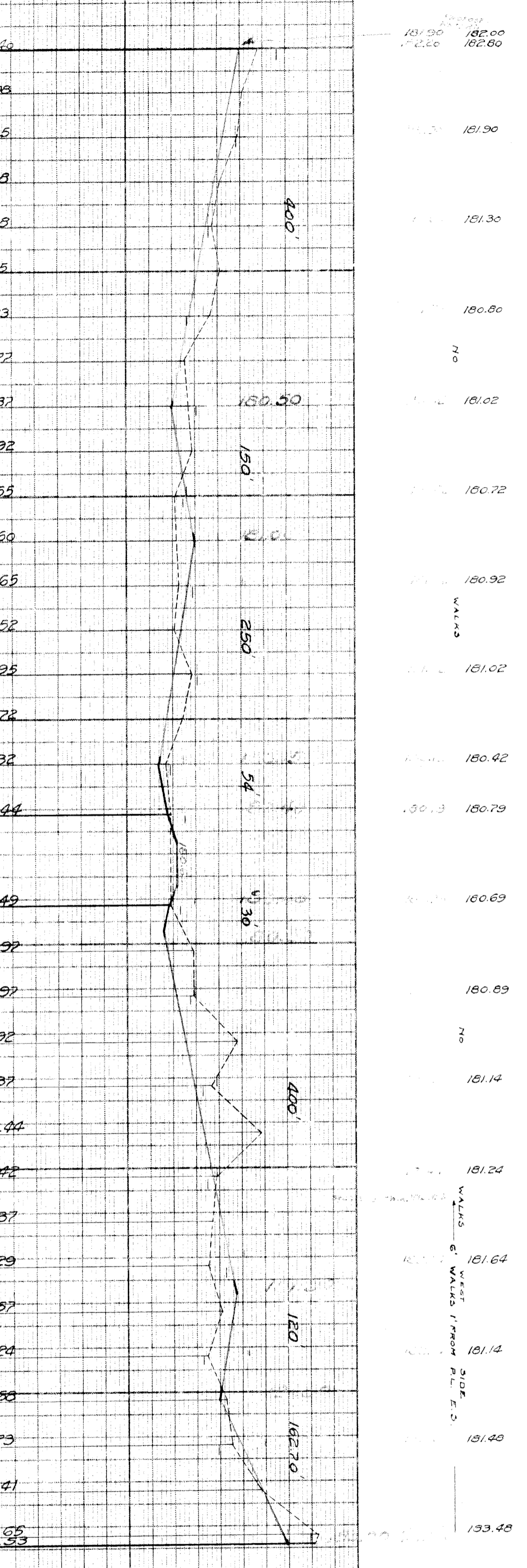
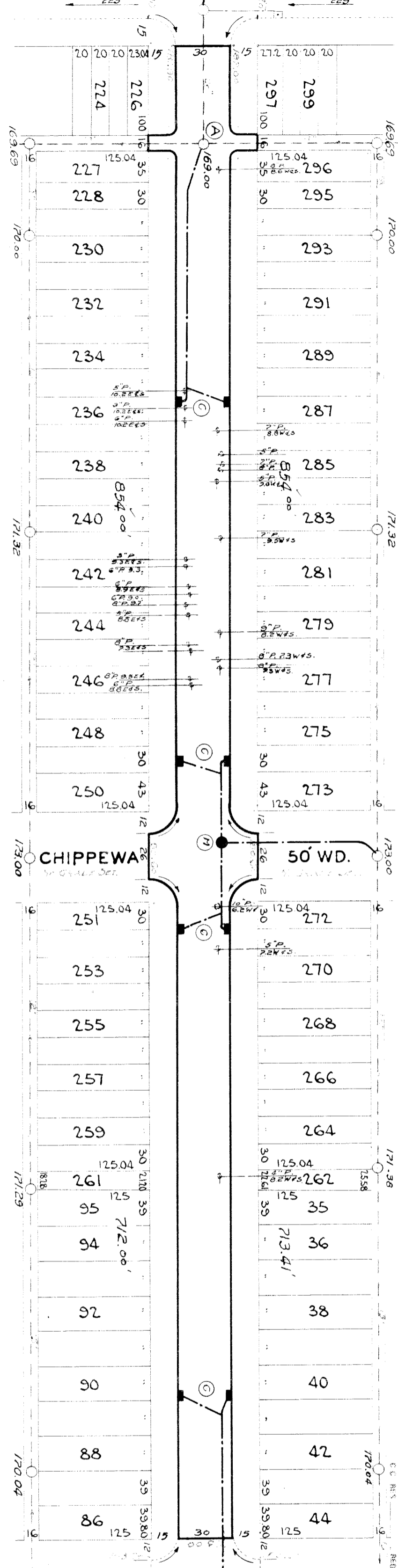
CARD NO.	INDEX TOPS NO.	INDEX SHEET NO.	SECTION NO.
64	87	64	87
DESIGNED BY	APPROVED BY	DATE	PROJECT
W.I. Coffey P.M.	L.C. Kozlowski Assoc. Engrs.	3/10/41	STANSBURY
URBAN BY	CHECKED BY	DATE	PROJECT
	L.C. Kozlowski Assoc. Engrs.	3/10/41	STANSBURY
DESIGNED BY	APPROVED BY	DATE	PROJECT
W.I. Coffey P.M.	L.C. Kozlowski Assoc. Engrs.	3/10/41	STANSBURY
URBAN BY	CHECKED BY	DATE	PROJECT
	L.C. Kozlowski Assoc. Engrs.	3/10/41	STANSBURY

DESIGNED BY	APPROVED BY	DATE	PROJECT
W.I. Coffey P.M.	L.C. Kozlowski Assoc. Engrs.	3/10/41	STANSBURY
URBAN BY	CHECKED BY	DATE	PROJECT
	L.C. Kozlowski Assoc. Engrs.	3/10/41	STANSBURY

HOW ESTIMATED	ESTIMATED	FINAL
1/100	1/50	1/25
1/100	1/50	1/25
1/100	1/50	1/25

QUANTITIES	ESTIMATED	FINAL
LOTS	2172	157
CITY	157	157
CITY	157	157

NOTE	QUANTITIES
BEFORE STARTING CONSTRUCTION CONTRACTOR MUST CHECK WITH UTILITIES FOR LOCATION OF EXISTING STRUCTURES WHETHER OR NOT INDICATED ON PLANS	ESTIMATED
	FINAL



PEMBROKE TO CHIPPEWA APPLICATION # 248-147
 CHIPPEWA TO NORFOLK APPLICATION # 248-148

BENCH MARKS
 P.L.B.M. S.E. Cor. Pembroke + Markham 181.39
 Arrow Hyd. S.E. Cor. Ardmore + Pembroke 185.69
 S.E. Cor. of cond. walk of S.W. Cor. Stansbury + Chippewa 180.95
 Spike in S.S. of N. BT. Pole N.S. Norfolk W.S. Alley W. of Stansbury 183.47
 P.L.B.M. S.E. Cor. Markham + Eight N. Rd. 184.92
 87-2534

- A - Construct a std. 18"x12" Y Basins complete and connect with 12" pipe to existing sewer as shown.
- B - Construct one std. M.H. complete.
- C - Contractor shall cut down and grub out all trees. Cost to be included in Excavation.
- D - Adjust top of 1 ex. M.H.