

DEPARTMENT OF PUBLIC WORKS
CITY ENGINEER'S OFFICE - DIVISION OF PAVING DESIGN
STREET PAVING PLAN

STANSBURY AVE. 66' & 60' W.D.
INTERVALE AVE.
LYNDON AVE.

TYPE OF PAVEMENT CLASS "B" "MAC+2 1/2" OIL AGG. WIDTH 30'

FROM INTERVALE AVE.
TO LYNDON AVE.

RECORD NO. 68 84

INDEX TO SHEETS 2 2

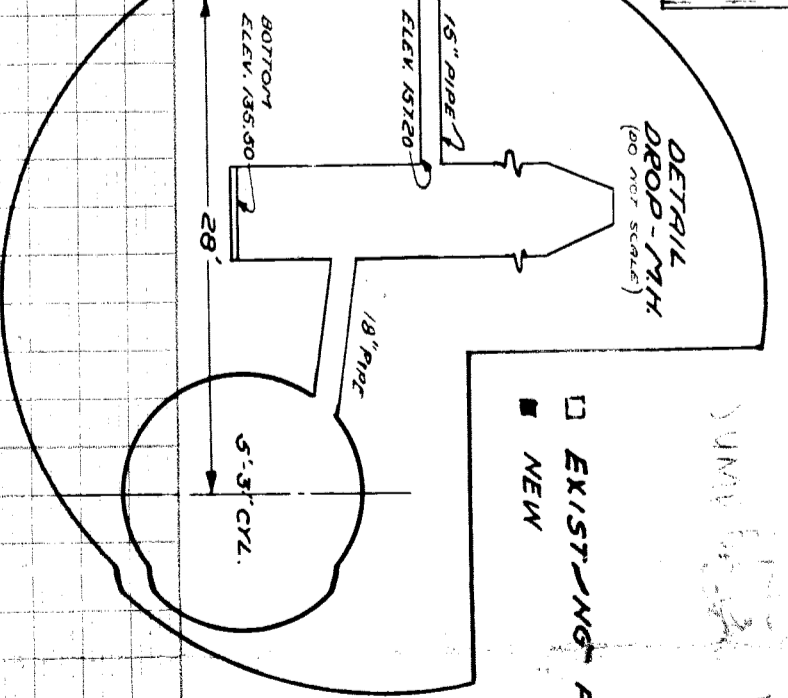
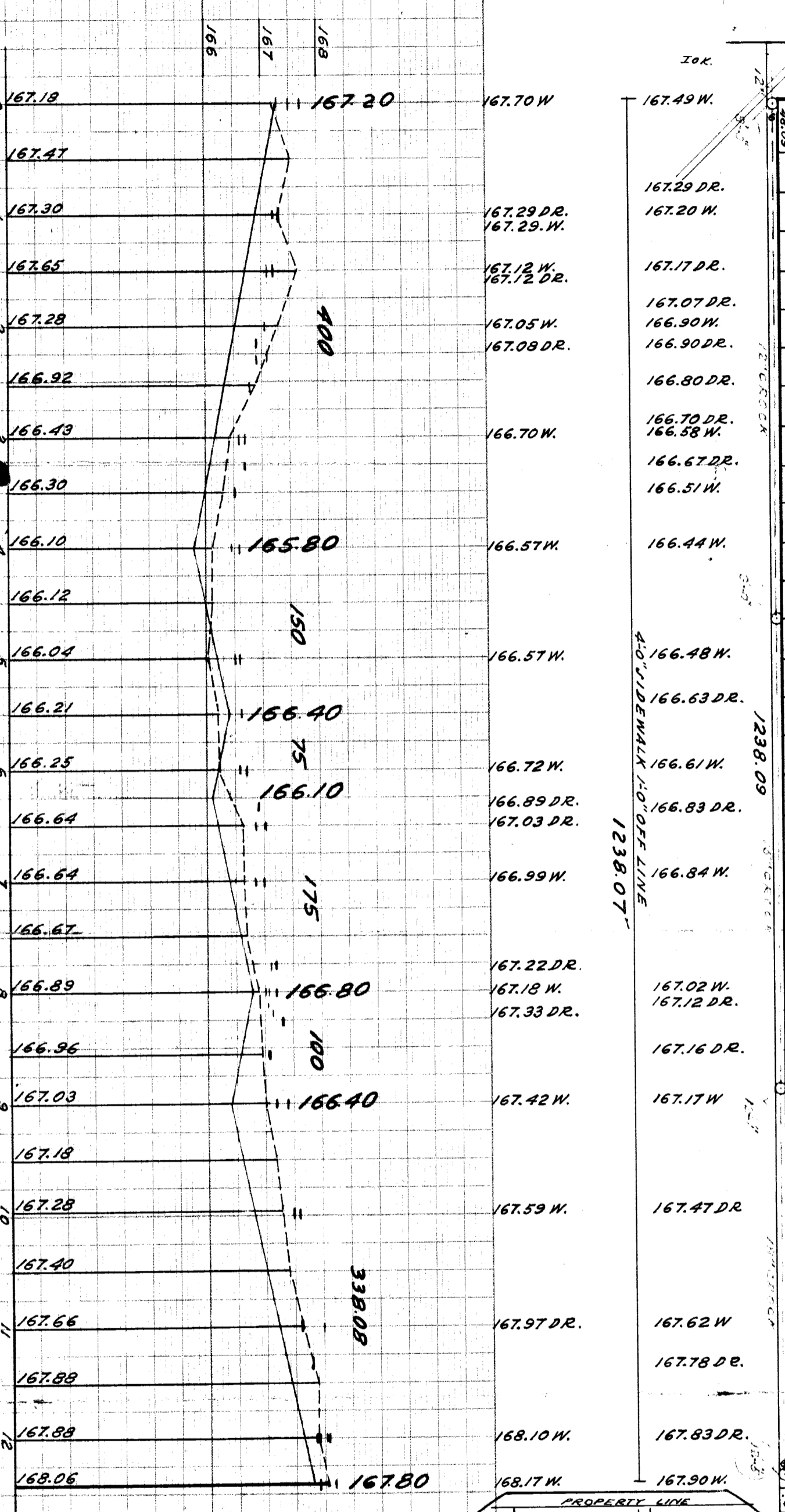
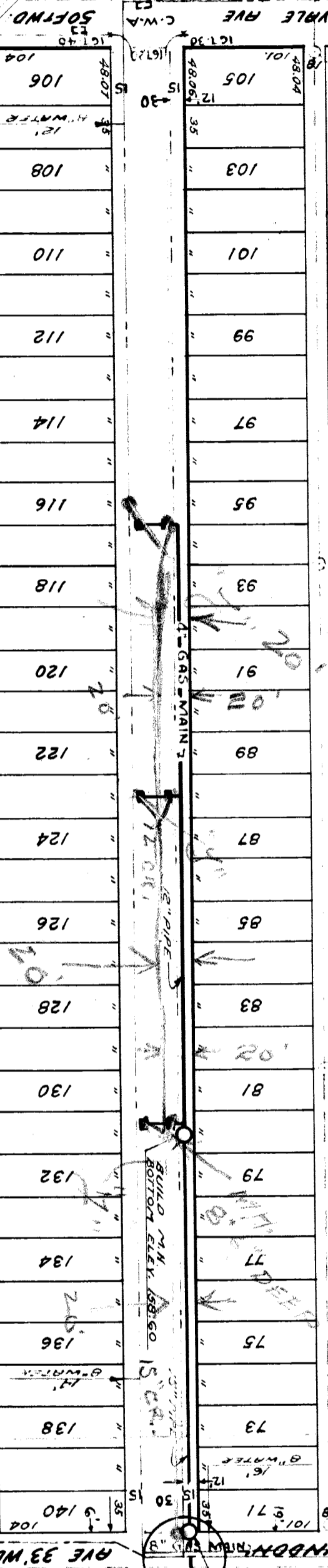
NUMBER OF SHEETS 2

AT	NO.	QUANTITIES	LOTS	CITY	LOTS	CITY
		EXCAVATION				
		STRAIGHT CURB NEW				
		OLD CURB RESET				
		CIRCULAR CURB				
		PAVING				
		CONCRETE BASE				

NO. SCALE	1" = 20'	BOOK	1324	PAGE	42
PLAN	AW	PROFILE	AW	COMPUTED	
NO. CAD	10808	GRADE	1/6	CHECKED	
CITY	21	LENGTH	2920.90		
TOTAL	21	LENGTH	2942.44		

REVISION: 10-24-38
RETURNS ON INTERVAL AVE CHANGED FROM
30 FT TO 26 FT

165.96	166.61	166.74	166.96	167.16	167.24	167.19	167.26
--------	--------	--------	--------	--------	--------	--------	--------



ARROW ON HYD. SIDE STANSBURY 450N. INTERVALA 169.285
ARROW ON HYD. SIDE STANSBURY 808N. INTERVALA 169.985

BUILD 1/4" DIA. BOTTOM ELEV. 155.50 SEE DETAIL

STARTED MAY 30, 1940
FIN. JULY 15, 1940
1550' x 15' DIA. CURB
6.18' DIA. CURB
25' DIA. CURB

10' DIA. CURB
15' DIA. CURB
25' DIA. CURB