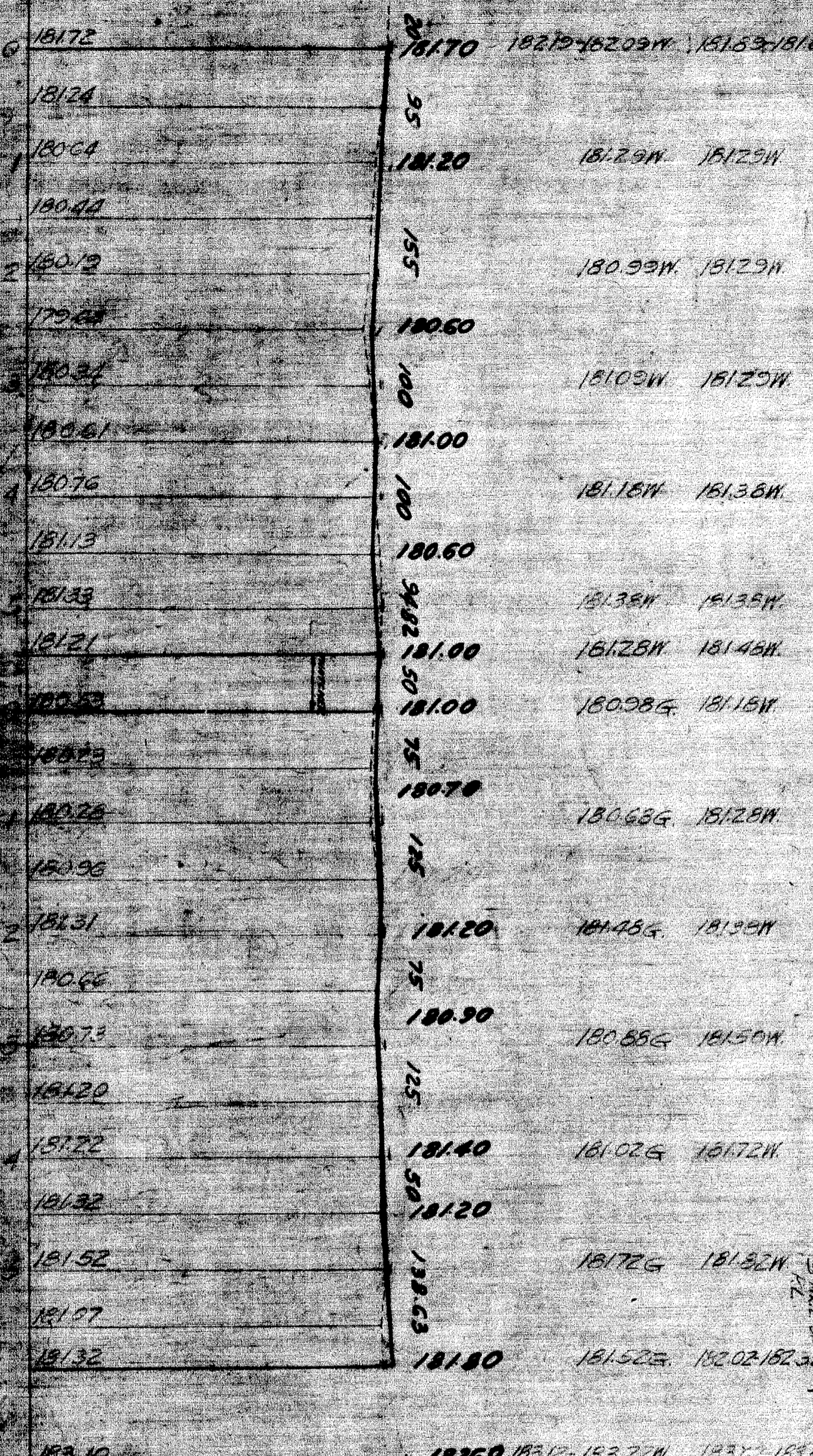
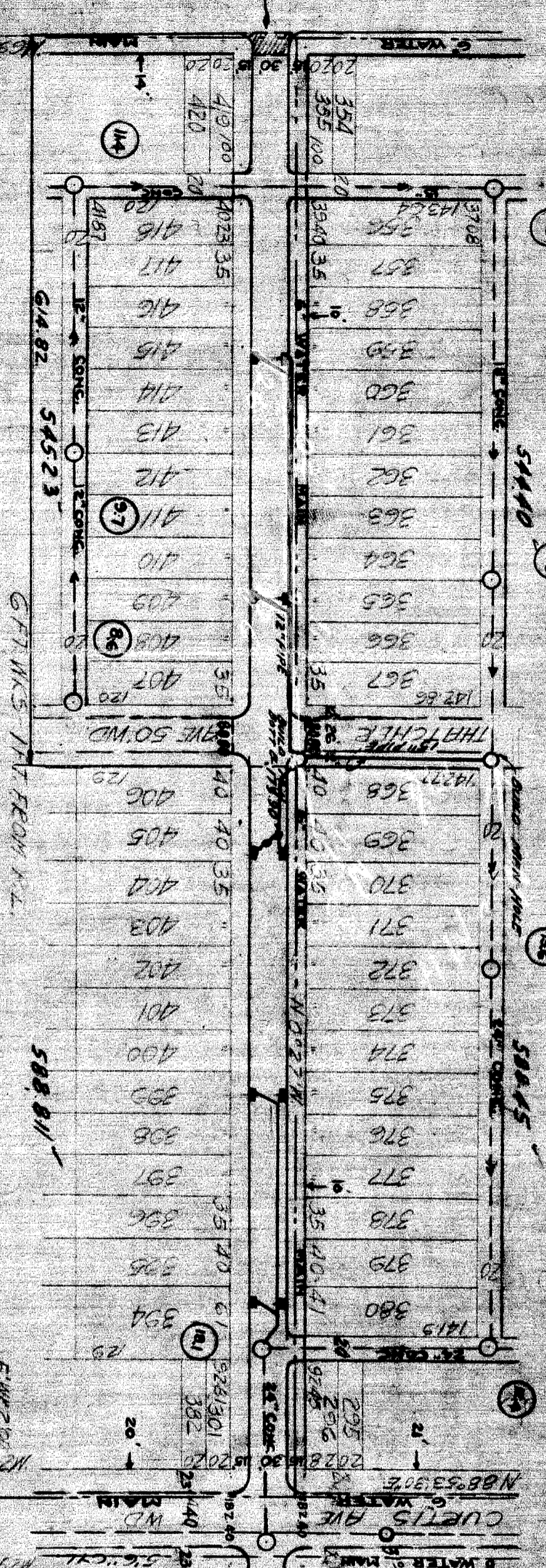


STANSBURY AVE 60'
 FROM THATCHER TO CURTIS
 THATCHER TO CURTIS

DEPARTMENT OF PUBLIC WORKS
 CITY ENGINEERS OFFICE
 1925
 C-1218



REVISION: 10-24-38
 RETURNS ON THATCHER AVE CHANGED FROM 30 FT TO 26 FT.

B.M. + ON W. INT SW COR. RECORDED & COPIED BY 1922
 B.M. SET IN 12' OAKS S. OF TEE QUITE DEEP STANSBURY
 TR. 10' ON W. S. OF STANSBURY 800' N. OF CURTIS AVE
 TR. 10' ON W. S. OF THATCHER 18165
 B.M. + ON W. INT SW COR. CURTIS & STANSBURY 1922
 B.M. + ON FOOTING S.E. COR. TILING STA. X 5.5 X 4.5
 100' W. OF COLLIERIE 10-16-01
 B.M. FROM DEHYDRAE COR. STANSBURY & THATCHER 1920
 B.M. + W. INT SW COR. CURTIS & REYNOLDS 1921-01

WATER MAIN OK 10-19-38

94-1-100
 94-1-100

NO.	DESCRIPTION	DATE	BY
1	AS SHOWN		
2	REVISION		
3	REVISION		
4	REVISION		
5	REVISION		
6	REVISION		
7	REVISION		
8	REVISION		
9	REVISION		
10	REVISION		

SCALE: 1" = 40'	DATE: 10-19-38
DRAWN BY: [Name]	CHECKED BY: [Name]
DESIGNED BY: [Name]	APPROVED BY: [Name]
CITY ENGINEER: [Name]	