

BEFORE STARTING CONSTRUCTION CONTRACTOR MUST CHECK WITH UTILITIES FOR LOCATIONS OF EXISTING STRUCTURES WHETHER OR NOT INDICATED ON PLANS.

SCALE
 1" = 40'
 1" = 40'

REVISIONS

NO.	DATE	REVISIONS
1		
2		
3		
4		
5		
6		
7		
8		
9		
10		
11		
12		
13		
14		
15		
16		
17		
18		
19		
20		
21		
22		
23		
24		
25		
26		
27		
28		
29		
30		
31		
32		
33		
34		
35		
36		
37		
38		

QUANTITIES	ESTIMATED
EXCAVATION	CU. YDS.
PAVEMENT REMOVAL	SQ. YDS.
CURB REMOVAL	L.F.T.
FILL	CU. YDS.
ADJUST MANHOLES	MANHOLES
RECONSTRUCT CONE	CONES
CATCH BASIN ADJUST	STANDARDS
CATCH BASIN STANDARD NEW	STANDARDS
12" SPW. PIPE	L.F.T.
12" SPW. PIPE	SQ. YDS.

QUANTITIES	ESTIMATED
PAVING	SQ. YDS.
PAVING	UNITS
CURB-TYPE II	L.F.T.
TEST CONES	EACH
SIDEWALK 4" STANDARD	STANDARDS
CONCRETE DRIVE	STANDARDS
TREE REMOVAL	4"-12" DIA.
TREE REMOVAL	13"-18" DIA.

ASSIGNMENT NO. A0 1706 A
 BOOK NO. 98 E 3
 LEVEL 1-11
 DATE 12-20-65

LOT 21
 CITY 21
 TOTAL
 DATE OF DRAWING
 2-15-67

DRAINAGE COMPLETED
 PAVING COMPLETED
 A.C. 3-4-67

PLAN	MADE BY	CHECKED BY
W.L.T.	P.E. W.L.T.	W.L.T.
W.L.T.	W.L.T.	W.L.T.
W.L.T.	W.L.T.	W.L.T.
W.L.T.	W.L.T.	W.L.T.

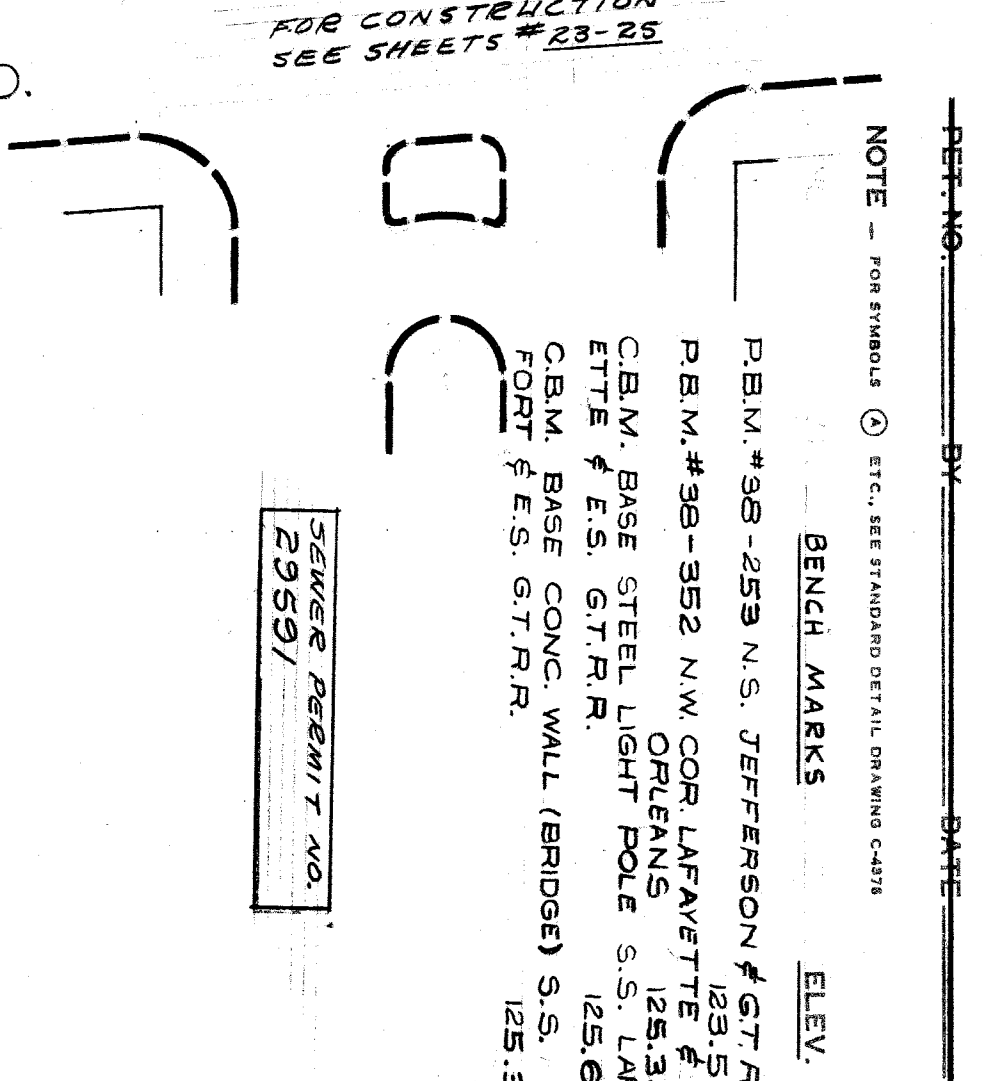
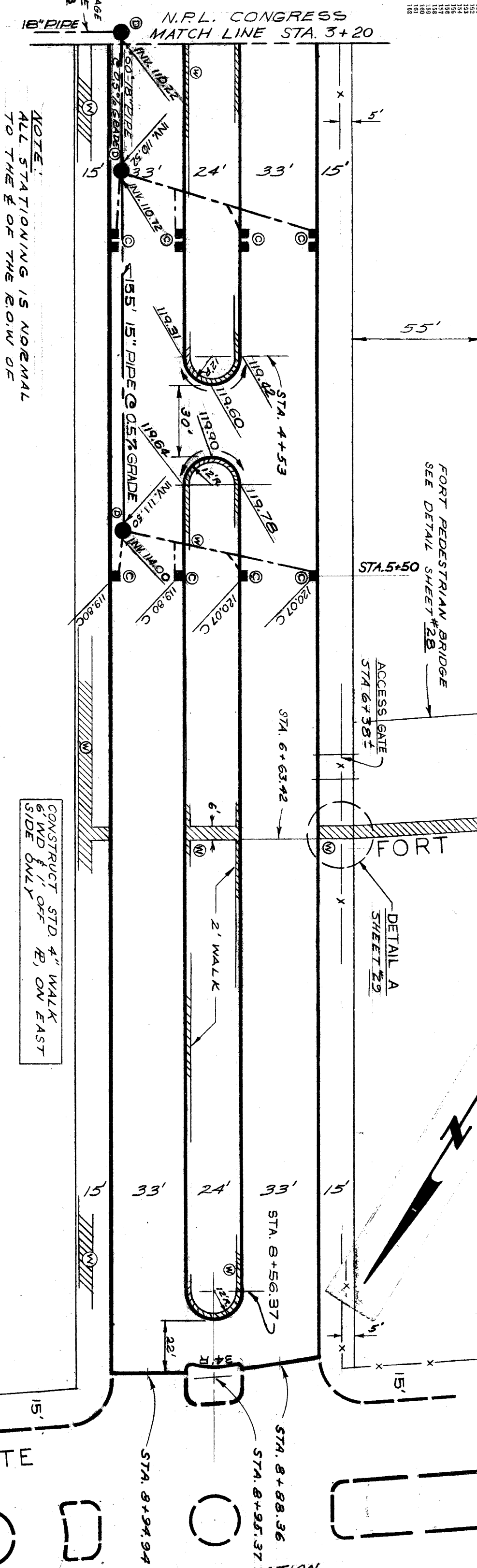
ENGINEER OF STREETS
 ASSISTANT CITY ENGINEER

INDEX NO.	TPO NO.
11	38

NAME OF STREET: ST. AUBIN
 FROM: N.P.L. CONGRESS
 TO: S.P.L. LAFAYETTE

TYPE OF PAVEMENT: 10" ONE COURSE CONCRETE-INTEGRAL CURB
 10" UNIFORM AT STREET INTERSECTION EXCEPT AS NOTED

DATE: 2-93' FT. WD.
 SHEET 16 OF 37 SHEETS



STATION	ELEVATION	WIDTH	BOUND
125	119.65	80'	NORTH
124	119.20	50'	NORTH
123	119.40	75'	NORTH
122	119.20	75'	NORTH
121	119.50	50'	NORTH
120	120.40	50'	NORTH
119	121.60	13.36'	NORTH
125	123.00	75'	SOUTH
124	123.50	75'	SOUTH
123	124.05	50'	SOUTH
122	124.45	50'	SOUTH
121	124.80	13.36'	SOUTH
120	124.90	13.36'	SOUTH
119	124.90	13.36'	SOUTH

SEE DRAINAGE DETAIL SEE SHEET #28

PERMITS: P.B.M. #98-253 N.S. JEFFERSON # G.T.R.R. 123.552
 P.B.M. #98-352 N.W. COR. LAFAYETTE # ORELEANS 125.32
 C.B.M. BASE STEEL LIGHT POLE S.S. LAFAYETTE # E.S. G.T.R.R. 125.69
 C.B.M. BASE CONC. WALL (BRIDGE) S.S. FORT # E.S. G.T.R.R. 125.32

SEWER PERMIT NO. 29591