

DEPARTMENT OF PUBLIC WORKS DETROIT

CITY ENGINEER'S OFFICE --- DIVISION OF PAVING DESIGN

STREET PAVING PLAN

PARKING AREA

AT ST. AUBIN & FOREST

PLAYGROUND

ASSIGN. NO. MO-13C-32  
PETITION NO.

SHEET 1 OF SHEETS

CARD NO.   
 INDEX NO. 13 TOPO NO. 40  
 RECORD NO.

TYPE OF PAVEMENT 8 6 8 ONE COURSE CONCRETE - INTEGRAL CURB  
 8" UNIFORM AT STREET INTERSECTIONS EXCEPT AS NOTED  
 WIDTH 40'

SEWER			
GRADE & BASIN LOCATION REVISIONS 2-13-51 MEL			
SUPPLEMENTARY DETAILS			
C-324A	C-390	C-597	C-739B
C-325	C-524	C-733	C-938
C-326A	C-585	C-739	
C-327	C-586	C-739A	

NOTE: BEFORE STARTING CONSTRUCTION CONTRACTOR MUST CHECK WITH UTILITIES FOR LOCATIONS OF EXISTING STRUCTURES WHETHER OR NOT INDICATED ON PLANS.

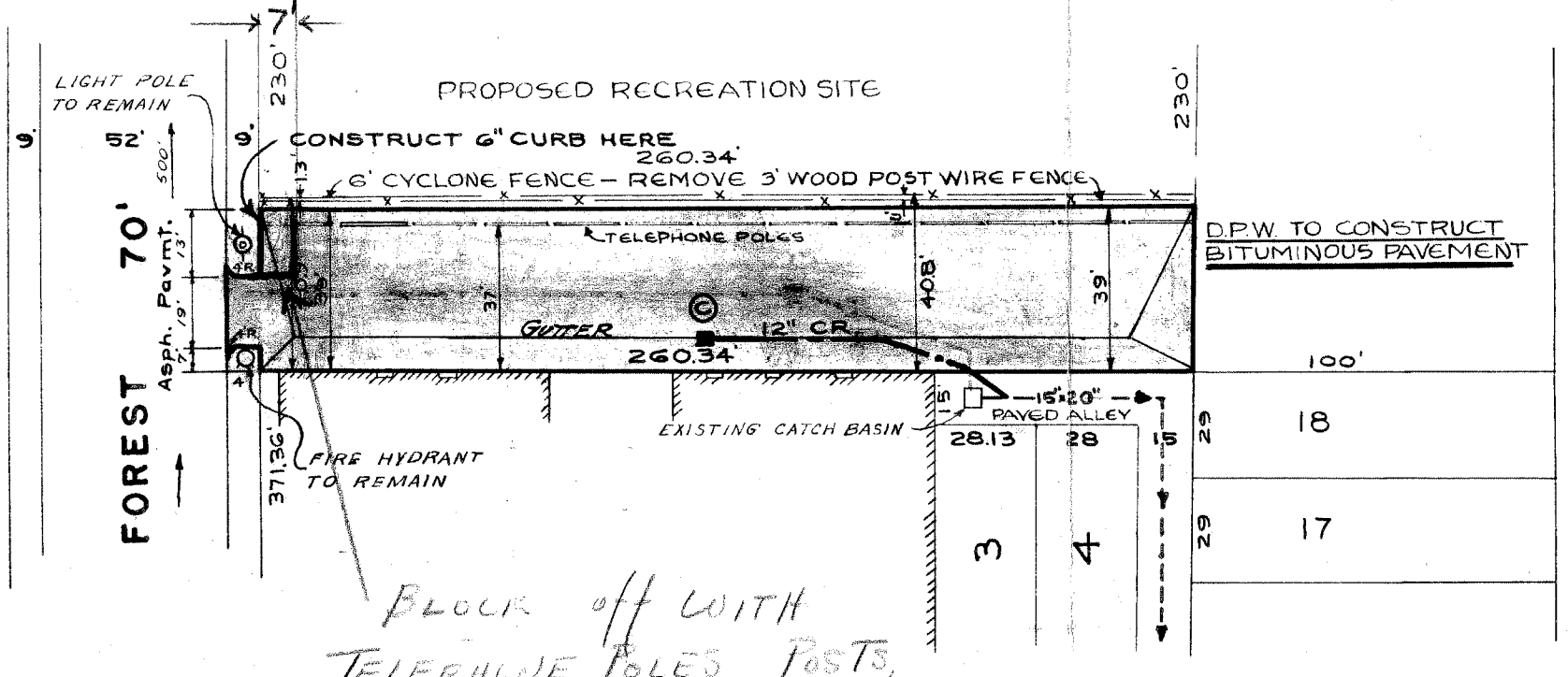
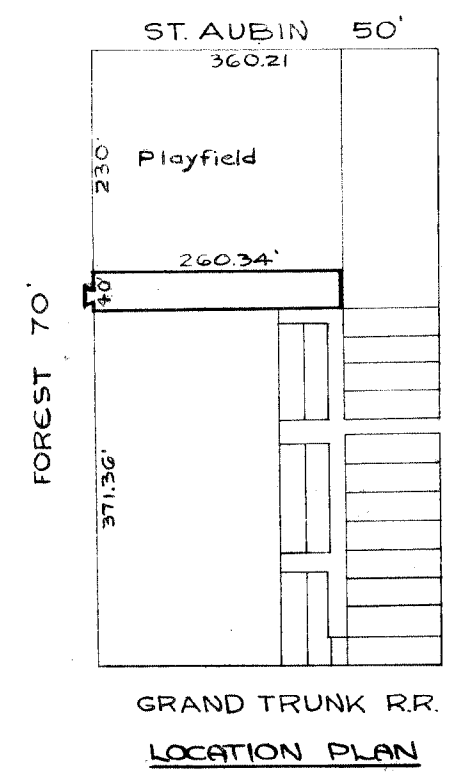
PLAN SCALE DISTORTED  
 LOTS & ALLEYS 1"=50'  
 STREET WIDTHS 1"=50'

DRAINAGE COMPLETED \_\_\_\_\_  
 PAVING COMPLETED \_\_\_\_\_

QUANTITIES	ESTIMATED		FINAL	
	LOTS	CITY	LOTS	CITY
EXCAVATION CU. YDS.		544		
NEW CURB LIN. FT.				
PAVING SQ. YDS.				
6" BITUMINOUS PAVMT. SQ. YDS.		1148		
SIDEWALK SQ. FT.				
MANHOLES	ADJUST			
	CONSTRUCT			
BASINS	ADJUST			
	CONSTRUCT			
SEWERS-12" LIN. FT.		75		

HOR. SCALE 1" = 50'	BOOK 1692 PAGE 59
VER. SCALE 1" = 2'	LEVELS JAN. 1951 DATE DRAWING 1-25-51
PLAN 5B	PROFILE 5B
CHECKED	COMPUTED D.B.
GRADE	CHECKED
LOT# 2L	LENGTH
CITY 2L	LENGTH
TOTAL 2L	LENGTH 260.34
	LOTS
	CITY
COST ADVERTISING	
COST INSPECTION	

DESIGNED BY  
 DRAWN BY STANLEY BULMER  
 TRACED BY  
 CHECKED BY Robt. R. Ream  
 APPROVED  
 ENGINEER OF STREETS  
 CITY ENGINEER



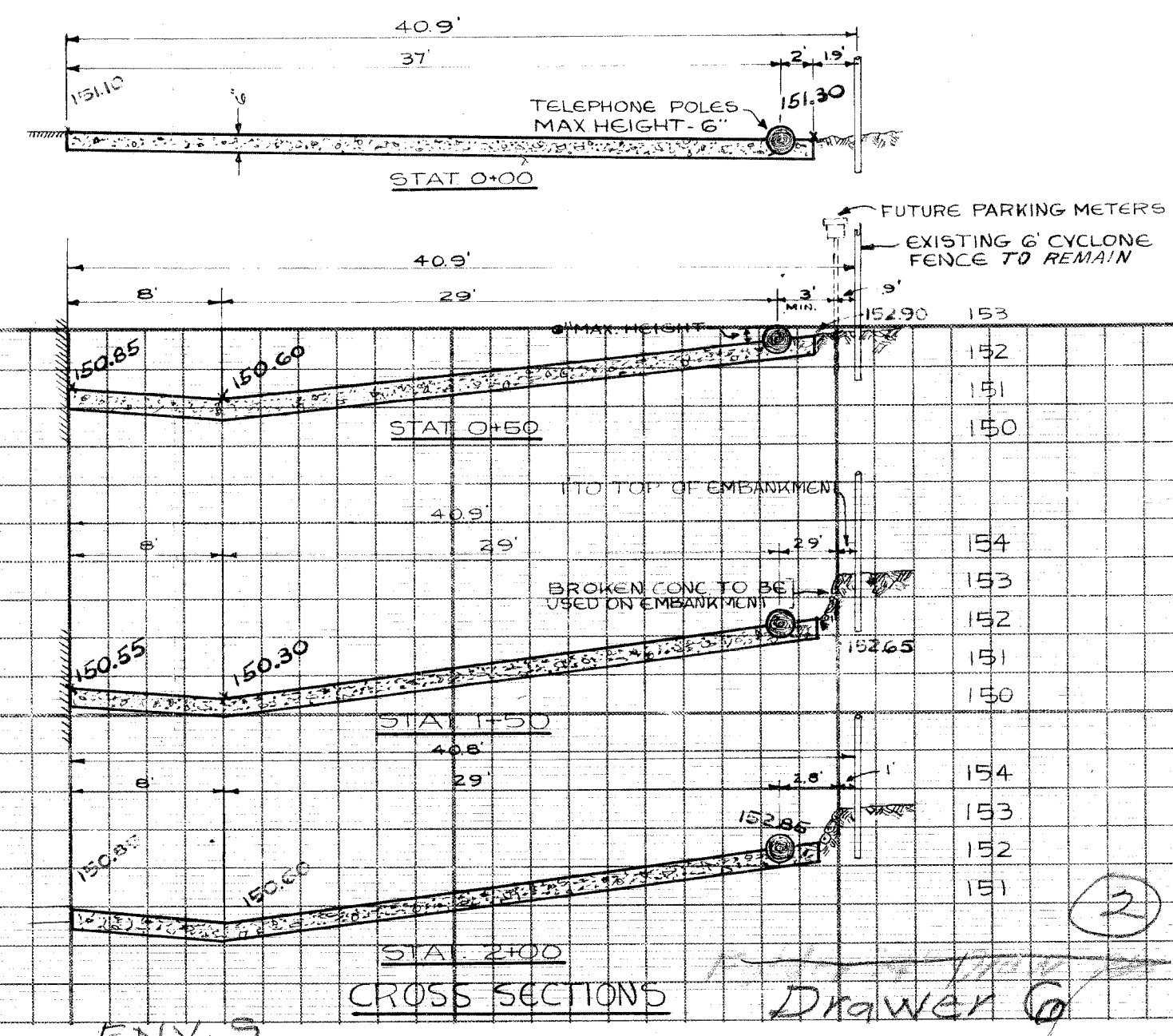
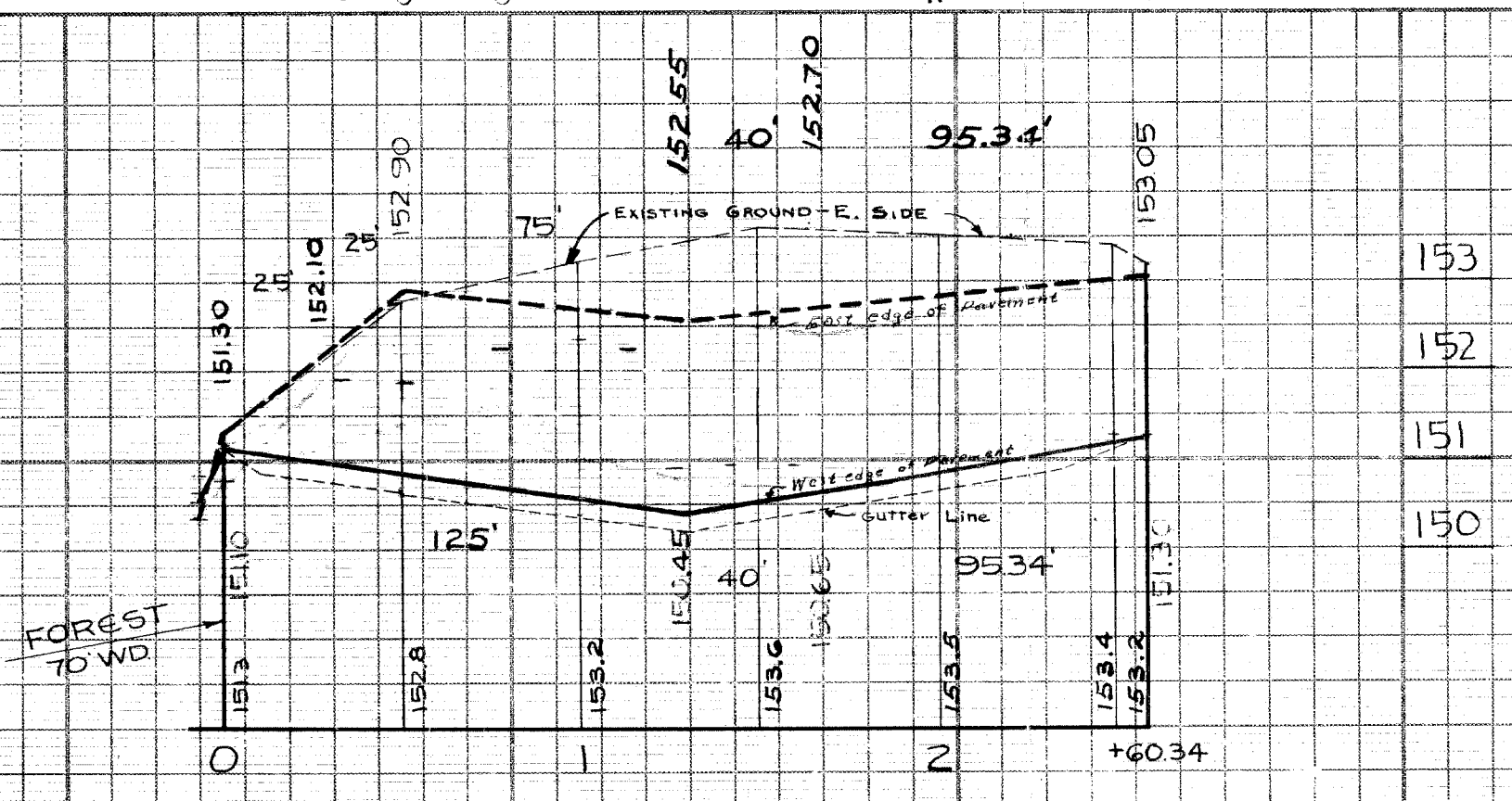
Block off with TELEPHONE POLES, POSTS, OR REALIGN PROPOSED CURB

*New Prints Ordered 2-28-51*

Common Council Resolution Nov. 29th 1950 - J.C.C. 3310

NOTES:  
 AT (C) CONSTRUCT 1 STD. 18"x12" V BASIN  
 PARKING METERS, SIGNS & LANE MARKINGS TO BE DONE BY TRAFFIC ENGINEER.

- 150.52 GUTTER 150.36
- 150.48+ CURB 150.67
- 151.12 W. 150.78 W.
- 0+24 W. SILL 151.90
- 0+52 W. SILL 151.27
- 0+80 CONC. 152.28
- 1+00 CONC. 152.00
- 1+15 CONC. 152.28
- 1+26 W. SILL 150.90
- 1+43 W. SILL 150.93
- 1+62 W. SILL 150.94
- 1+89 CONC. 151.04
- 2+00 CONC. 151.01
- 2+50 CONC. 151.28
- 2+60 CONC. 151.27



ENV. S

CROSS SECTIONS

Drawer @