

REVISIONS	OLD MAP 2-5-36
REVISIONS	CHANGES TO 10-26-49
REVISIONS	CHANGES TO MEET ESTIMATES
C-327	C-586
C-328A	C-585
C-324A	C-587
C-325	C-524
C-326A	C-733
	C-938
	C-739
	C-739A

NOTE:
BEFORE STARTING CONSTRUCTION CONTRACTOR MUST CHECK WITH UTILITIES FOR LOCATION OF EXISTING STRUCTURES WHETHER OR NOT INDICATED ON PLANS.

PLAN SCALE DISTORTED
LOTS & ALLEYS 1"=100'
STREET WIDTHS 1"=50'

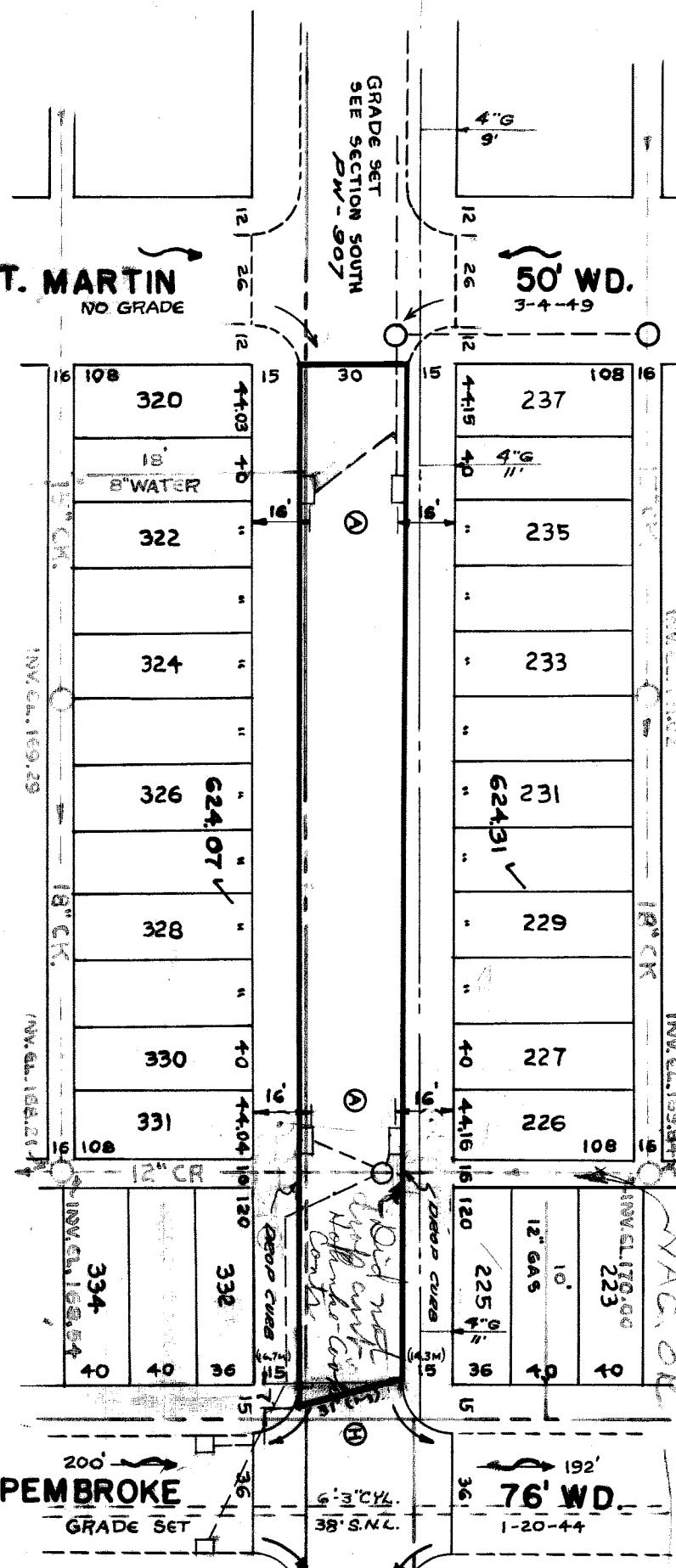
DRAINAGE COMPLETED 9-24-45
PAVING COMPLETED C.C. 1-31-50

QUANTITIES	ESTIMATED	FINAL
EXCAVATION CU. YDS.	858	858
NEW CURB LIN. FT.	8	8
PAVING 8" 8.0 SQ. YDS.	2	2
PAVING 6" 6.0 SQ. YDS.	2	2
CONC. ON 30" 30.0	108	108
CONC. ON 18" 18.0	108	108
SIDWALK 4" 90.0	108	108
MANHOLES ADJUST	4	4
MANHOLES RECONSTRUCT	1	1
BASINS CONSTRUCT	1	1
SEWER 12" LIN. FT.	19	19

HOR. SCALE 1"=100'	BOOK 1705	PAGE 14
VER. SCALE 1"=2'	DATE DRAWN MAR. 1949	DRAWING 3-4-49
CHECKED BY S.B.	COMPUTED S.B.	5.5
PROFILER S.B.	CHECKED S.B.	0.8
PLAN S.B.	CHECKED S.B.	0.8
GRADE S.B.	CHECKED S.B.	0.8
TOTAL SQ. YDS. 1 255.38	LENGTH 3900	WIDTH 1950
	LENGTH 606.19	WIDTH 1950
	LENGTH 627.69	WIDTH 1950

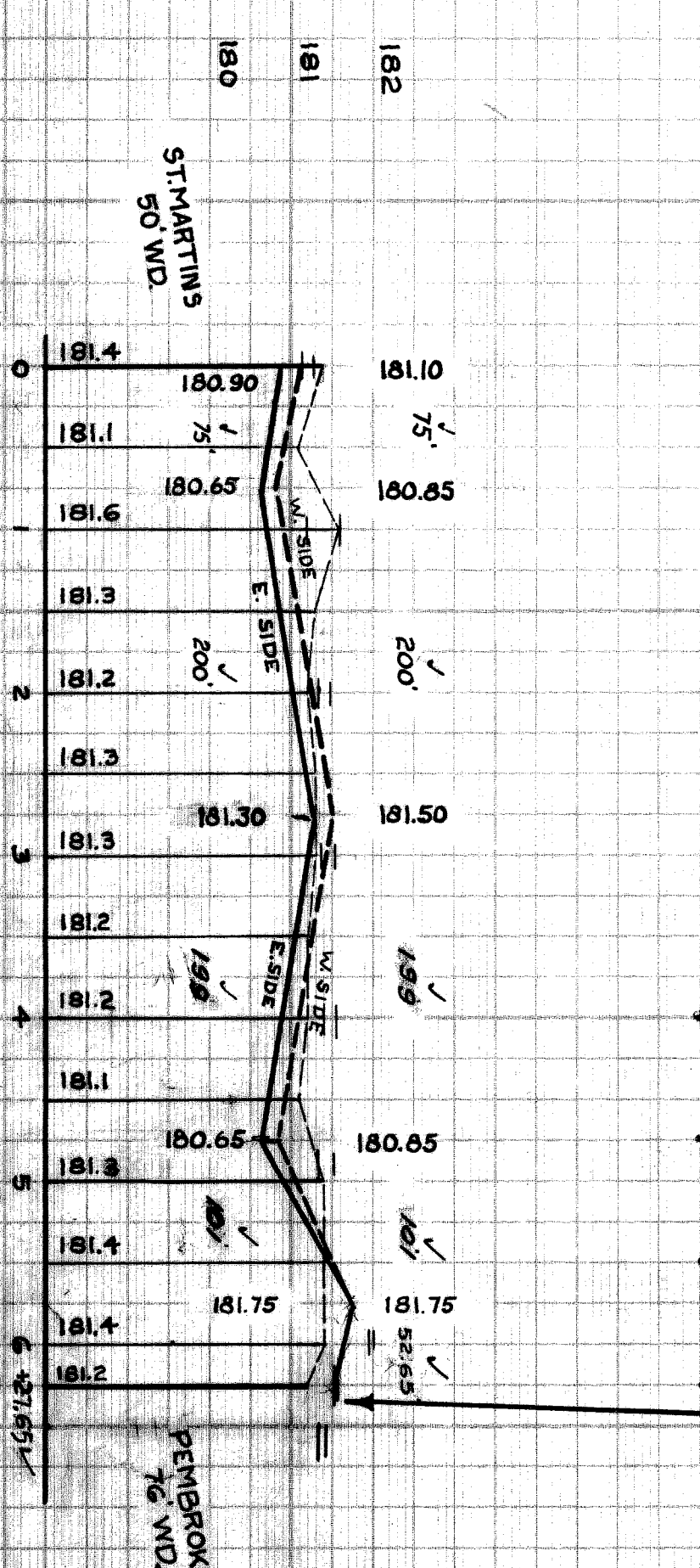
DESIGNED BY Stanley Bulmer
DRAWN BY
CHECKED BY S. F. Walker
APPROVED BY S. F. Walker
ENGINEER OF STREETS
ASSISTANT ENGINEER

CONTRACT NO. PW. 1029
DEPARTMENT OF PUBLIC WORKS DETROIT
CITY ENGINEERS OFFICE - DIVISION OF PAVING DESIGN
STREET PAVING PLAN
SNOWDEN
N.P.L. ST. MARTINS
FROM 3540 S.P.L. PEMBROKE
RECORD NO. 6487
INDEX TOP NO. 49-24
NAME OF STREET SNOWDEN
ASSIGN NO. 235-1
SHEET OF 1
SHEETS
WIDTH 30'



181.15 WK.	181.27 WK.
0+75 C.B.	0+75 C.B.
181.20 WK.	181.60 WK.
181.33 WK.	181.49 WK.
181.36 WK.	181.53 WK.
181.40 WK.	181.55 WK.
4+74 C.B.	4+74 C.B.
181.32 WK.	181.52 WK.
181.95 GR.	182.0 GR.
181.54	RETURN 181.57
181.32	CURB 181.41

G.C.W. 2.0 OFF PL.



10-26-49
ADJUSTMENTS IN QUANTITIES OF CITY
PORTION, DUE TO OMISSION OF ALLEY
RETURNING
EXCAVATION
PAVING 8" 6" 6"
SIDEWALKS
30 CU. YDS.
36 SQ. YDS.
72 SQ. YDS.

Change Order to Order - 10-27-49

- Notes**
- AT (M) CONSTRUCT 108 SQ. FT. OF STANDARD 4" CONCRETE WALK.
 - AT (M) ADJUST TOPS OF 4 EXISTING 18" 12" BASINS WITH FLAT TYPE FRAMES AND GRATES.
 - CONTRACTOR SHALL REMOVE CONCRETE HEADER AND BROKEN ASPHALT BACK OF JUNCTION AS REQUIRED AND FILL WITH COLD PATCH TO MEET NEW GRADES. 10 CU. YDS. INCLUDED UNDER EXCAVATION TOTALS FOR COST.
 - ADJUST TOPS OF 7 WATER MANHOLES
 - ADJUST TOP OF 1 SEWER MANHOLE.
 - RECONSTRUCT CONE OF 1 SEWER MANHOLE, IF NECESSARY.
 - CONTRACTOR SHALL FURNISH ALL NECESSARY MATERIALS, INCLUDING CASTINGS AND SHALL HAIL ALL SALVAGEABLE MATERIALS TO D.P.W. YARD AT STATE FAIR AND JOHN R. STREETS.
 - DIRT ALLEYS AT ENDS OF PAVEMENT SHALL BE GRADED BACK AND STORED 6" DEEP UNIFORM, FOR A DISTANCE OF 10 FT. TO MEET EXISTING GRADES. 24 CU. YDS. IS INCLUDED UNDER EXCAVATION TOTALS FOR COST.

did not top out on N.B. - The Pembroke-Corner-Corner-Corner
Must check when E. & W. sides had to within 3 days of set
it go straight across N.B. W.

30 copies C-390 X C 326 A

410520