

**DEPARTMENT OF PUBLIC WORKS DETROIT**  
**CITY ENGINEER'S OFFICE --- DIVISION OF PAVING DESIGN**  
**STREET PAVING PLAN**

CARD NO. 50-12  
 NAME OF STREET: **SIMMS**  
 FROM: **4.11' N. OF NPL. OF PORTLANCE**  
 TO: **6.22' S. OF SPL. OF MC. NICHOLS**  
 TYPE OF PAVEMENT: **8.6-8 ONE COURSE CONC. INTEGRAL CURB** WIDTH: **26'-28'-30'**  
 PET. # **919** SJ JAGLOWSKI 4-6-48 NOT PAID.  
 FORCED PAVING C.C.R.  
 FET. # **315** S. JAGLOWSKI 1/31/50  
 NOTE: W.P.L. OFFSET 5' TO + IN WALK BENCH MARKS  
 P.L.B.M. 60-253 NE COR. OUTER DR. & MC. NICHOLS 142.121 ✓  
 P.L.B.M. 60-253A SE. COR. ALGONAC & MC. NICHOLS 142.063 ✓  
 ARROW: HYD. SW. COR. PORTLANCE & SIMMS 146.29 ✓  
 ARROW: HYD. S.W. COR. MC. NICHOLS & SIMMS 144.67 ✓

DESIGNED BY	L.G. VANTUYL
DRAWN BY	S.F. DAVIS
TRACED BY	S.F.D.
CHECKED BY	<i>Spacia - R. R. R.</i>
APPROVED	<i>[Signature]</i>
ENGINEER OF STREETS	<i>[Signature]</i>
ASST. CITY ENGINEER	<i>[Signature]</i>

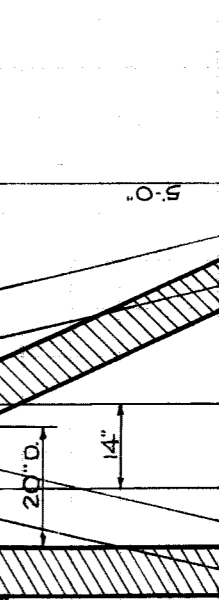
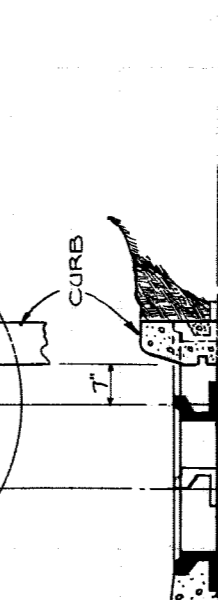
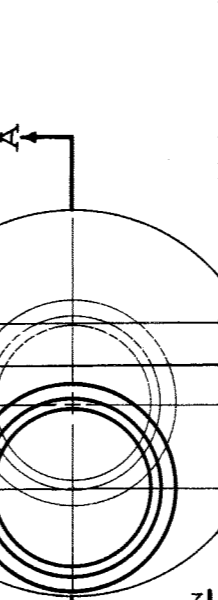
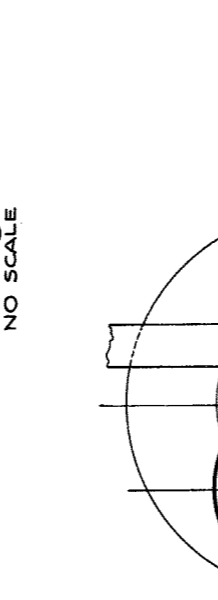
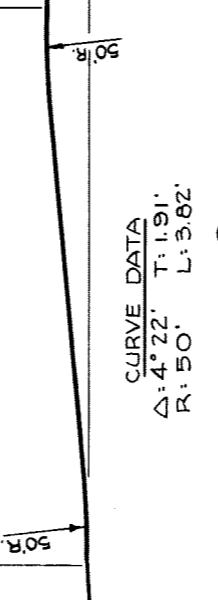
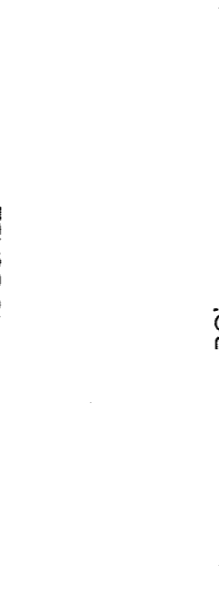
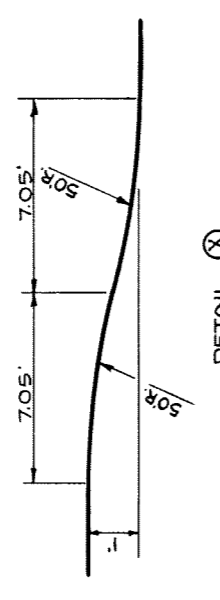
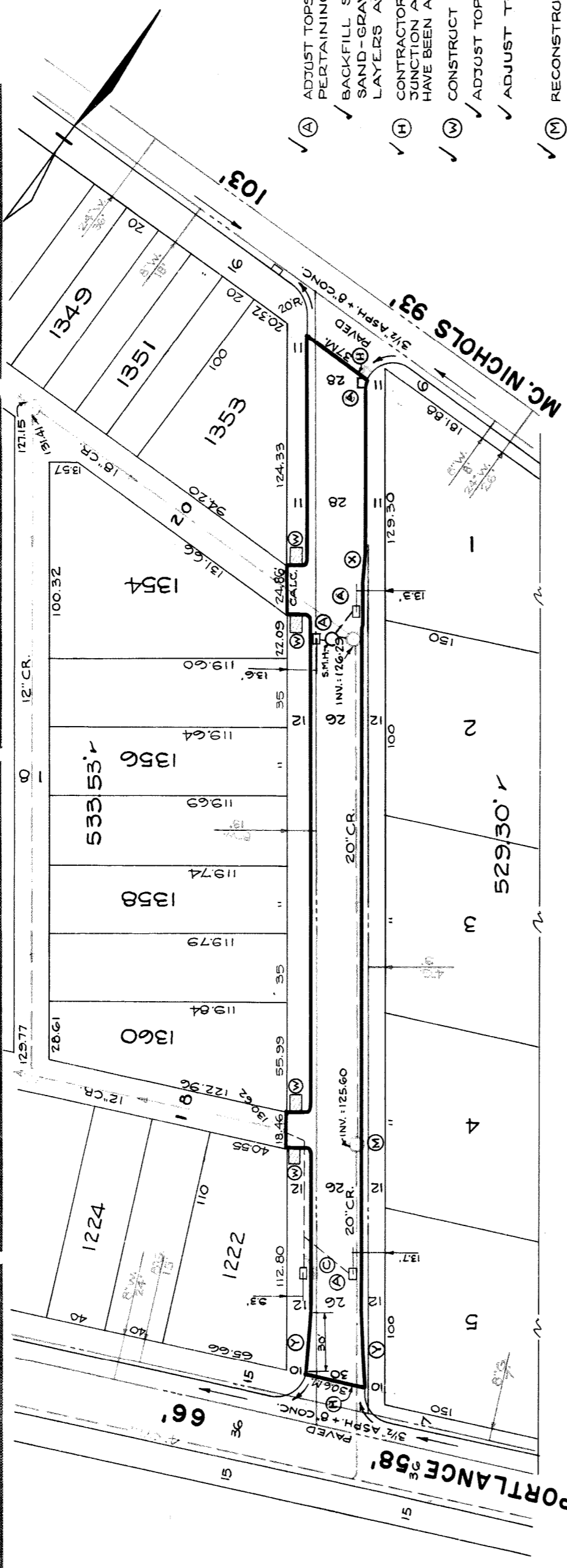
HOR. SCALE	1" = 60'	BOOK	959	PAGE	58
VER. SCALE	1" = 2'	DATE	6-25-48		
PLAN	S.F.D.	PROFILE	S.F.D.	COMPUTED	S.S.
CHECKED	L.G.M.T.	GRADE	L.G.V.T.	CHECKED	F.F.
LOTS	2L	101955	LENGTH	50978	
CITY	2L	4332	LENGTH	2166	
TOTAL	2L	106287	LENGTH	53144	
COST ADVERTISING					
COST INSPECTION					

QUANTITIES	ESTIMATED	FINAL
EXCAVATION CU. YDS.	LOTS	LOTS
NEW CURB LIN. FT.	579	68
PAVING 8.6-8 SQ. YDS.	1532	124
SIDEWALK 4" SQ. FT.	144	144
MANHOLES ADJUST	35	35
RE CONSTRUCT	4	4
BASINS ADJUST	1	1
CONSTRUCT	10	10
SEWERS 12" LIN. FT.	100	100
SEWERS 15" LIN. FT.		
CONC. DRIVE SQ. FT.		

NOTE: BEFORE STARTING CONSTRUCTION CONTRACTOR MUST CHECK WITH UTILITIES FOR LOCATIONS OF EXISTING STRUCTURES WHETHER OR NOT INDICATED ON PLANS

PLAN SCALE DISTORTED  
 LOTS & ALLEYS 1" = 60'  
 STREET WIDTHS 1" = 60'  
 DRAINAGE COMPLETED 4-10-40  
 PAVING COMPLETED 6-22-50

SEWER	REVISIONS	SUPPLEMENTARY DETAILS
		C-586
		C-587
		C-390
		C-324A
		C-325
		C-324
		C-585
		C-936



- NOTES**
- (A) ADJUST TOPS OF 4-EXIST. CATCH BASINS WITH FLAT TYPE FRAMES AND GRATES. SEE NOTE PERTAINING TO CASTINGS. \*
  - (B) BACKFILL SEWER PIPE TRENCHES UNDER PROPOSED PAVEMENT WITH APPROVED SAND-GRAVEL MATERIAL; ELSEWHERE FILL & TAMP WITH APPROVED EARTH LAYERS AS REQUIRED.
  - (H) CONTRACTOR SHALL REMOVE CONCRETE HEADER AND BROKEN ASPHALT BACK OF JUNCTION AS REQUIRED AND FILL WITH COLD PATCH TO MEET NEW GRADES TO C.C.YDS. HAVE BEEN ADDED TO EXCAVATION TOTALS FOR COST.
  - (N) CONSTRUCT 144 SQ. FT. OF STD. 4" WALK.
  - (O) ADJUST TOPS OF 3 EXISTING SEWER MANHOLES.
  - (P) ADJUST TOP OF 1 WATER MANHOLE.
  - (M) RECONSTRUCT 1 EXIST. MANHOLE. SEE DETAIL (M) AND STD. DRAWING C-325.
  - (C) ABANDON 1 EXISTING PIPE BASIN & PLUG OUTLETS WITH CLASS "C" CONCRETE. REMOVE OR FILL BASIN WITH CLASS "C" CONCRETE. CONSTRUCT 1 STD. PIPE CATCH BASIN WITH STD. FRAMES & GRATES AS REQUIRED. CONNECT TO EXISTING OUTLETS AS SHOWN. SEE STD. DRAWINGS C-326A & C-524.
  - (\*) DIRT ALLEYS AT ENDS OF PAVEMENT SHALL BE GRADED BACK & STONED 6" DEEP UNIFORMLY FOR A DISTANCE OF 10 FT. TO MEET EXISTING GRADES. 24 CUYDS. INCLUDED UNDER EXCAVATION TOTALS FOR COST.
  - (\*) CONTRACTOR SHALL FURNISH NEW CASTINGS FOR ALL ADJUSTED BASINS & MANHOLES EXCEPT WHEN SALVAGED CASTINGS ARE AVAILABLE & THEIR USE PERMITTED BY THE ENGINEER. A DEDUCTION OF \$15.00 FOR EACH TOP SO USED SHALL BE MADE FROM THE ORIGINAL CONTRACT PRICE. OTHERWISE THE SALVAGED CASTINGS MUST BE HAULED TO D.P.W. YARDS AT STATE FAIR & JOHN R. STS.

410510

MC. NICHOLS 93

PORTLANCE 58

SECTION AA

DETAIL (M) SCALE: 3/8" = 1'