

DEPARTMENT OF PUBLIC WORKS DETROIT
CITY ENGINEER'S OFFICE --- DIVISION OF PAVING DESIGN
49-17 STREET PAVING PLAN

NAME OF STREET: **SHIELDS**
 FROM: **N.P.L. OF SEVEN MI. RD.**
 TO: **S.P.L. OF EMERY AVE.**

ASSIGN NO. **325P-19**
 PETITION NO. **4243**
 SHEET OF **2** SHEETS

RECORD NO. **10 91**
 TITLE OF PAVEMENT: **B 6 B ONE COURSE CONCRETE - INTEGRAL CURB**
 B 6 B UNIFORM AT STREET INTERSECTIONS EXCEPT AS NOTED

DESIGNED BY: **Hashbrook, D.L.**
 DRAWN BY: **D.L.**
 CHECKED BY: **R.H. R. R.**
 APPROVED: **J.S. [Signature]**
 ENGINEER OF STREETS
Martin [Signature]
 ASST. CITY ENGINEER

BOOK	PAGE	LEVELS	DATE
1336	I	9-4-43	1-3-43
PLAN PROFILE GRADE CHECKED S.F.D. D.H. COMPUTED S.F.D. G.Y. LENGTH 1 670.44 CITY 116.00 TOTAL 1 786.44			

QUANTITIES	ESTIMATED	FINAL
EXCAVATION CU. YDS. 386 NEW CURB LIN. FT. 376 PAVING 8'x8' SQ. YDS. 124 8' CURB 1/2 ASPH. 558 SIDEWALK 4' SQ. FT. 948 MANHOLES CONCRETE 4 1/2 BASINS 10 SEWERAGE 50 LIN. FT. 100	CITY 376 LOTS 1593 CITY 63 LOTS 5820 CITY 558 LOTS 948 CITY 4 1/2 LOTS 10 CITY 100	CITY 386 LOTS 1593 CITY 63 LOTS 5820 CITY 558 LOTS 948 CITY 4 1/2 LOTS 10 CITY 100

NOTE: BEFORE STARTING CONSTRUCTION CONTRACTOR MUST CHECK WITH UTILITIES FOR LOCATIONS OF EXISTING STRUCTURES WHETHER OR NOT INDICATED ON PLANS.

PLAN SCALE DISTORTED
 LOTS & ALLEYS 1" = 100'
 STREET WIDTHS 1" = 50'

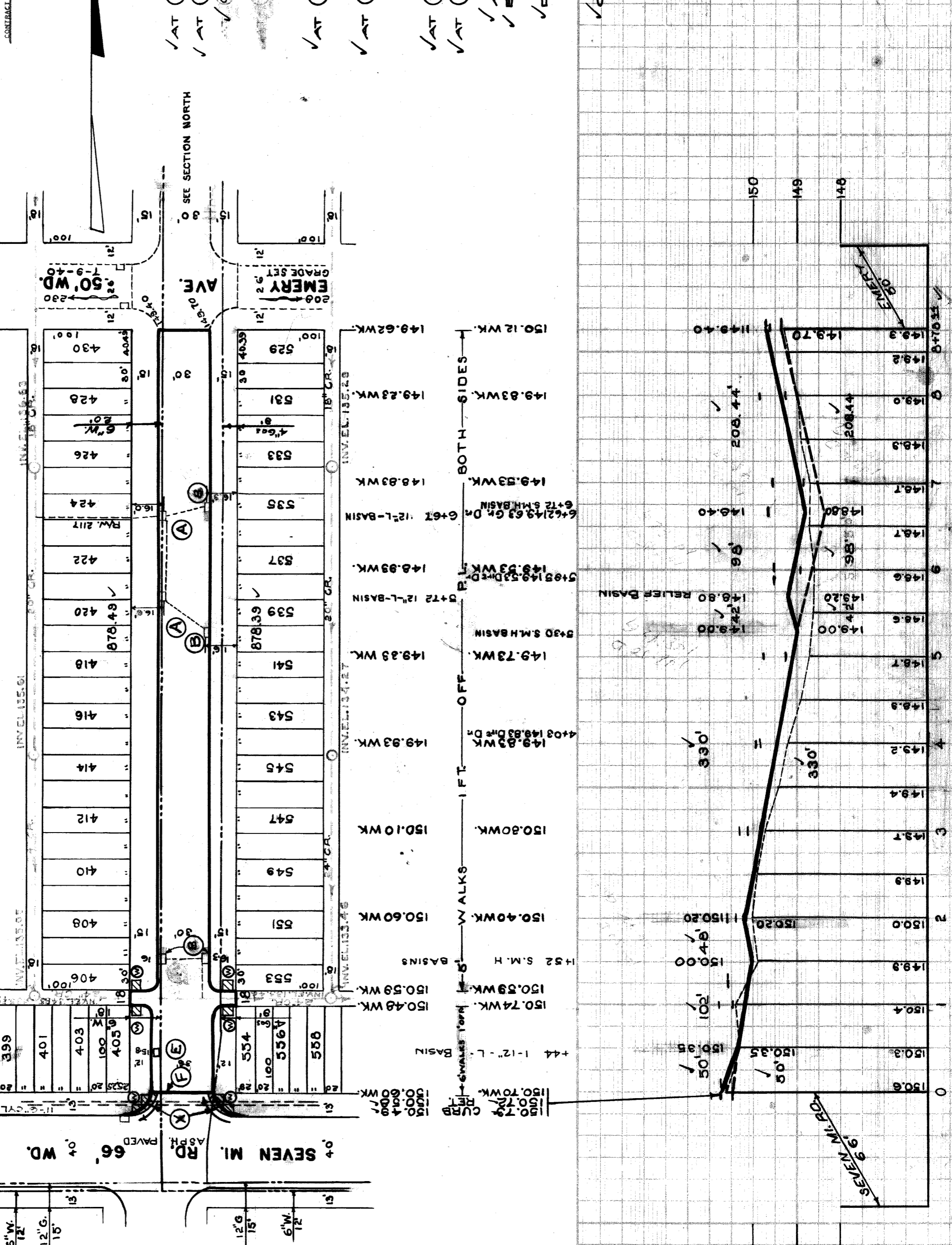
DRAINAGE COMPLETED **5-21-39**
 PAVING COMPLETED **C.C. 10-25-49**

SEWER	REVISIONS	OLD MAP
C-327	C-586	C-739A
C-326A	C-585	C-739
C-325	C-524	C-733
C-324A	C-587	C-739B

PET. # **4243** 12/21/48 **G.M. LOSIE** 7 MILE TO EMERY
 BENCH MARKS
 P.B.M. #45-215 ON W. SIDE EUREKA, 75' S. OF 7 MI. IS A TRK. ELEV. 147.780
 SPK. IN E. SIDE OF 18" OAK. 153.780
 ARROW ON HYD. S.W. COR. 7 MI. RD. S. SHIELDS
 AT HOUSE #18166, SHIELDS AT E.R.L. OF S. W. COR. OF RAISED W.K. 150.540
 ARROW OF HYD. N.W. COR. OF SHIELDS & EMERY 152.860
 ARROW OF HYD. N.W. COR. OF SHIELDS & LANTZ 157.140

NOTES (SHEET 1 OF 2)
 AT (A) ADJUST TOPS OF 2 EXISTING 12" L. BASINS USING FLAT TYPE GRATES & FRAMES.
 AT (B) ADJUST TOPS OF 4 EXISTING S.M.H. BASINS USING FLAT TYPE GRATES & FRAMES.
 CONTRACTOR SHALL CONSTRUCT 1 1/2" x 12" Y. BASIN INCLUDING CONNECTION, IF NECESSARY.

AT (E) ABANDON 1 EXISTING 12" L. BASIN. PLUG OUTLETS WITH CLASS 'C' CONCRETE. REMOVE OR FILL BASIN WITH CLASS 'C' CONCRETE.
 AT (F) CONTRACTOR SHALL REMOVE CONCRETE HEADER & BROKEN ASPHALT BACK OF JUNCTION AS REQUIRED & FILL WITH COLD PATCH TO MEET NEW GRADES. 70 CU. YDS. ARE INCLUDED UNDER EXCAVATION TOTALS FOR COST.
 AT (W) CONSTRUCT 3/8 SQ. FT. OF STANDARD 4" SIDEWALK.
 AT (X) WIDEN EXISTING 30' RETURN WITH TYPE II CURBS TO 36' 6". PAVE WING STRIPS WITH 8" CONCRETE + 3" ASPHALT.
 ADJUST TOPS OF 2 WATER MANHOLES.
 BACKFILL SEWER PIPE TRENCHES UNDER PROPOSED PAVEMENT WITH APPROVED SAND GRAVEL MATERIAL.
 DIRT ALLEYS AT ENDS OF ALLEY RETURNS SHALL BE GRADED BACK & STONED 6" DEEP UNIFORMLY FOR A DISTANCE OF 10 FEET TO MEET EXISTING GRADES. 22 CU. YDS. HAVE BEEN ADDED TO EXCAVATION TOTALS FOR COST.
 CONTRACTOR SHALL FURNISH ALL NECESSARY MATERIALS INCLUDING CASTINGS & SHALL Haul ALL SALVAGEABLE MATERIALS TO DEDRAW YARD AT STATE FAIR & JOHN R. STREETS.



410503

